

# CERTIFIED CORNER RECORDATION

Corner SW Sec S5 T 25 N. R. 28 W. P.M.M. LINCOLN County

I. Record: 1903 GLO survey by Albee and Trippet : Set a sandstone 14x12x6 ins., 10 ins. in the ground, marked with 5 notches on the E. and S. edge and scribed 4 bearing trees.

1978 BLM Remon: Set an iron pipe with brass cap from the original stone monument and the remains of the original bearing trees:

A fir, 13 ins. diam., bears S.40°30'E., 66 lks.(43.56 ft.) dist., with an overgrown blaze.(Record 70 lks.)

A fir stump, 16 ins. diam., bears S.6°W., 46 lks.(30.36 ft.) dist., mkd. T25N R28W S7 BT. (Record 54 lks.)

New bearing trees:

A larch, 6 ins. diam., bears N.74°E., 36 lks.(23.76 ft.) dist., mkd. T25N R28W S5 BT.

A fir, 13 ins. diam., bears S.17°30'W., 23 lks.(15.18 ft.) dist., mkd. T25N R28W S7 BT.

A fir, 9 ins. diam., bears N.74°W., 39 lks.(25.74 ft.) dist., mkd. T25N R28W S6 BT.

II. Found: 3¼ in. diam. BLM brass cap on a 2½ in. diam. iron pipe firmly set from which:

A Douglas fir, 14 ins. diam., bears S.17°30'W., 15.20 ft. dist., with visible scribing.

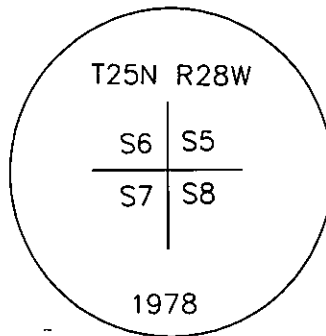
A Larch, 8 ins. diam., bears N.74°E., 23.76 ft. dist., with overgrown face.

A fir, 11 ins. diam., bears N.74°W., 25.74 ft. dist., with visible scribing.

A spruce, 8 ins. diam., bears S.83°W., 41.50 ft. dist., origin unknown.

III. Perpetuation:

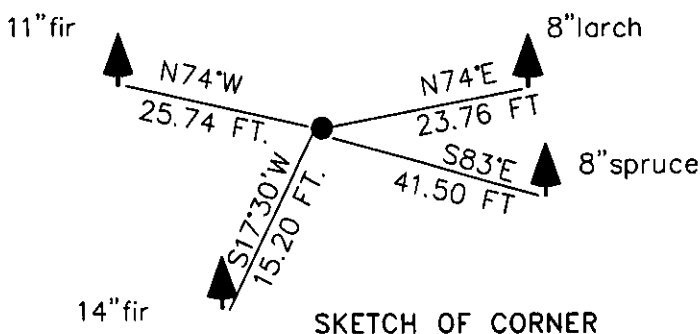
Painted faces and 6 in. wide red bands to all bearing trees and attached Land Survey Monument and Bearing Tree signs.



Magnetic declination: 20° East assumed

Equipment used: Hand compass and loggers tape

Kootenai Surveyors Inc., 314 California Av., Libby, MT. 59923 (406) 293-4354



SKETCH OF CORNER

## CERTIFICATION

PETE LANDIS

I, certify the information shown herein is true and correct.

Signature Ground Party Chief

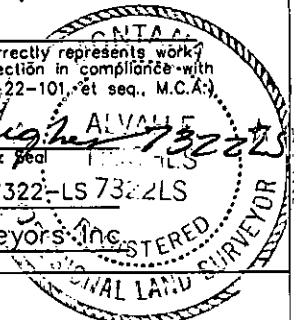
Alvah F. Hughes

I, certify that this Corner Record correctly represents work performed by me or under my direction in compliance with the "Corner Recordation Act" (70-22-101, et seq., M.C.A.)

Alvah F. Hughes ALVAL F. HUGHES  
Signature of Surveyor & Seal

Date: 04/15/2004 Reg. No. 7322-LS 7322LS

Employer: Kootenai Surveyors Inc.



Office of Clerk and Recorder, County of Lincoln This "corner

record" was filed for recor 190122 BOOK: CCR CC&R'S PAGE: 10904 Pages: 1

was noted on the cross-ir STATE OF MONTANA LINCOLN COUNTY

book No. RECORDED: 12/06/2005 9:25 KOI: CC&R'S

CORAL M. CUMMINGS CLERK AND RECORDER

FEE: \$0.00

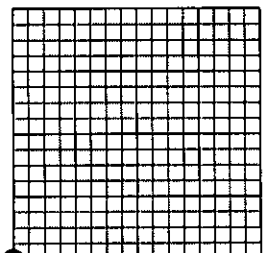
BY: Alvah F. Hughes

TO: AL HUGHES-SURVEYOR P.O. BOX 393, LIBBY MT 59923

Cross Index No. E 05 T. 25N. R. 28W. P.M., MT

Adopted July 1, 1981, Montana Board of Professional Engineers & Land Surveyors

Sec.5



• corner this sheet