

# CERTIFIED CORNER RECORDATION

Corner W 1/4 S5 T 25 N. R. 28 W. P.M.M. LINCOLN County

I. Record: 1903 GLO survey by Albee and Trippet :Set a sandstone 12x10x5 ins., 8 ins. in the ground marked 1/4 on W. face and scribed 2 bearing trees.

1978 BLM Remon:Set an iron pipe with brass cap from the original stone monument and the remains of the original bearing trees:

A pine, 36 ins. diam., bears N.19°E., 50 lks.(33.00 ft.) dist., with S5 visable on partially overgrown blaze.

A pine stump, 12 ins. diam., bears S.45°W., 21 lks.(13.86 ft.) dist., with the remains of a pine, lying alongside.

New bearing tree:

A fir, 12 ins. diam., bears S.10°30'W., 48 lks.(31.68 ft.) dist., mkd. 1/4 S6 BT.

II. Found: 3 1/4 in. diam. BLM brass cap on a 2 1/2 in. diam. iron pipe firmly set from which:

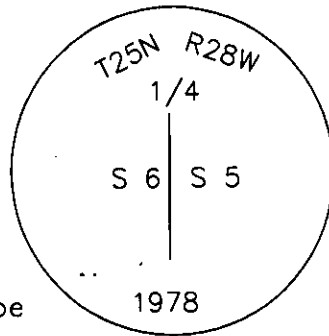
A Douglas fir, 14 ins. diam., bears S.10°30'W., 31.68 ft. dist. with visible scribing.

A pine snag, 36 ins. diam. bears N.19°E., 33.00 ft. dist. with overgrown face.

III. Perpetuation: We establish 1 new bearing tree:

A Douglas fir, 7 ins. diam., bears N.73°E., 23.60 ft. dist., scribed 1/4 S5 BT.

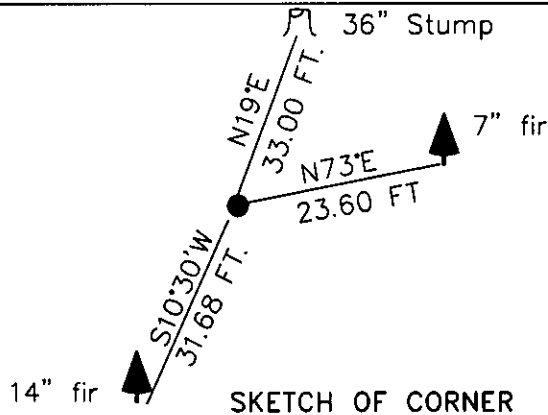
Painted faces and 6 in. wide red bands to all bearing trees and attached Land Survey Monument and Bearing Tree signs.



Magnetic declination: 20° East assumed

Equipment used: Hand compass and loggers tape

Kootenai Surveyors Inc., 314 California Av., Libby, MT. 59923 (406) 293-4354



CERTIFICATION  
I, PETE LANDIS  
certify the information shown herein is true and correct.

Signature Ground Party, Chief ALVIA

I, Alvah F. Hughes

certify that this Corner Record correctly represents work performed by me or under my direction in compliance with the "Corner Recordation Act" (70-22-101, et seq., M.C.A.)

Alvah F. Hughes  
Signature of Surveyor Seal

Date: 04/15/2004 Reg. No. 7322-LS

Employer: Kootenai Surveyors Inc. AND SURVEYOR

Office of Clerk and Recorder, County of Lincoln This "corner

record" was filed for record on 190121 BOOK: CCR CC&R'S PAGE: 10903 Pages: 1

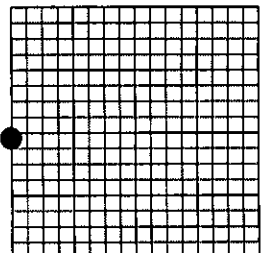
was noted on the cross- STATE OF MONTANA LINCOLN COUNTY  
book No. RECORDED: 12/06/2005 9:22 KOI: CC&R'S

CORAL M. CUMMINGS CLERK AND RECORDER  
FEE: \$0.00 BY: [Signature]  
TO: AL HUGHES-SURVEYOR P.O. BOX 393, LIBBY MT 59923

Cross Index No. C 05 T. 25N. R. 28W. P.M., MT

Adopted July 1, 1981, Montana Board of Professional Engineers & Land Surveyors

Sec. 5



• corner this sheet