

CERTIFIED CORNER RECORDATION

Corner W 1/4 S5 T 25 N. R. 28 W. P.M.M. LINCOLN County

I. Record: 1903 GLO survey by Albee and Trippet : Set a sandstone 12x10x5 ins., 8 ins. in the ground marked ¼ on W. face and scribed 2 bearing trees.

1978 BLM Remon: Set an iron pipe with brass cap from the original stone monument and the remains of the original bearing trees:

A pine, 36 ins. diam., bears N.19°E., 50 lks.(33.00 ft.) dist., with S5 visable on partially overgrown blaze.

A pine stump, 12 ins. diam., bears S.45°W., 21 lks.(13.86 ft.) dist., with the remains of a pine, lying alongside.

New bearing tree:

A fir, 12 ins. diam., bears S.10°30'W., 48 lks.(31.68 ft.) dist., mkd. ¼ S6 BT.

II. Found: ¾ in. diam. BLM brass cap on a 2½ in. diam. iron pipe firmly set from which:

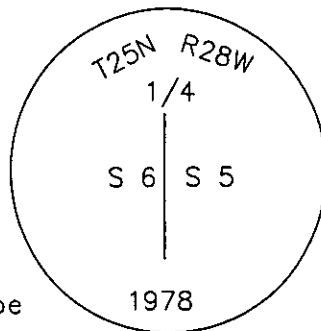
A Douglas fir, 14 ins. diam., bears S.10°30'W., 31.68 ft. dist. with visible scribing.

A pine snag, 36 ins. diam. bears N.19°E., 33.00 ft. dist. with overgrown face.

III. Perpetuation: We establish 1 new bearing tree:

A Douglas fir, 7 ins. diam., bears N.73°E., 23.60 ft. dist., scribed 1/4 S5 BT.

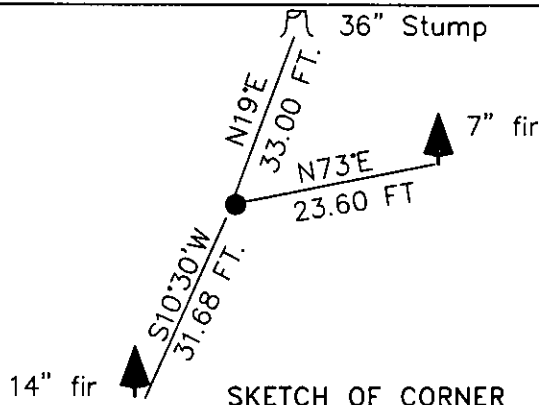
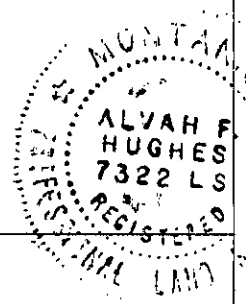
Painted faces and 6 in. wide red bands to all bearing trees and attached Land Survey Monument and Bearing Tree signs.



Magnetic declination: 20° East assumed

Equipment used: Hand compass and loggers tape

Kootenai Surveyors Inc., 314 California Av., Libby, MT. 59923 (406) 293-4354



CERTIFICATION

I, PETE LANDIS
certify the information shown herein is true and correct.
Pete Landis
Signature Ground Party Chief

I, Alvah F. Hughes
certify that this Corner Record correctly represents work performed by me or under my direction in compliance with the "Corner Recordation Act" (70-22-101, et seq., M.C.A.)
Alvah F. Hughes 7322 LS
Signature of Surveyor & Seal

Date: 04/15/2004 Reg. No. 7322-LS
Employer: Kootenai Surveyors Inc.

Office of Clerk and Recorder, County of Lincoln. This "corner

record" was filed for re

was noted on the cross

book No. _____

181355 BOOK: CCR CC&R'S PAGE: 10751 Pages: 1

STATE OF MONTANA LINCOLN COUNTY

RECORDED: 12/17/2004 9:36 KOI: CC&R'S

CORAL M. CUMMINGS CLERK AND RECORDER

FEE: \$0.00

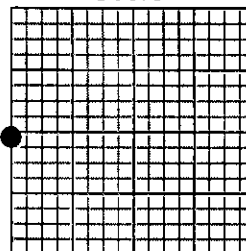
BY: *Coral M. Cummings*

TO: FILED

Cross Index No. C 05 T. 25N. R. 28W. P.M., MT

Adopted July 1, 1981, Montana Board of Professional Engineers & Land Surveyors

Sec.5



• corner this sheet