

# CERTIFIED CORNER RECORDATION

Corner: NW 1/16 SEC. 4 TWP. 25N., R. 28W., P.M.M.

LINCOLN COUNTY, MONTANA

RECORD:

NONE

FOUND EVIDENCE:

NONE

Perpetuation:

Set a 3 1/4 inches diameter aluminum cap stamped (See diagram below) attached to a 5/8 inch diameter x 30 inches long rebar 28 inches in the ground.

Established the following two new Bearing trees (See diagram below)

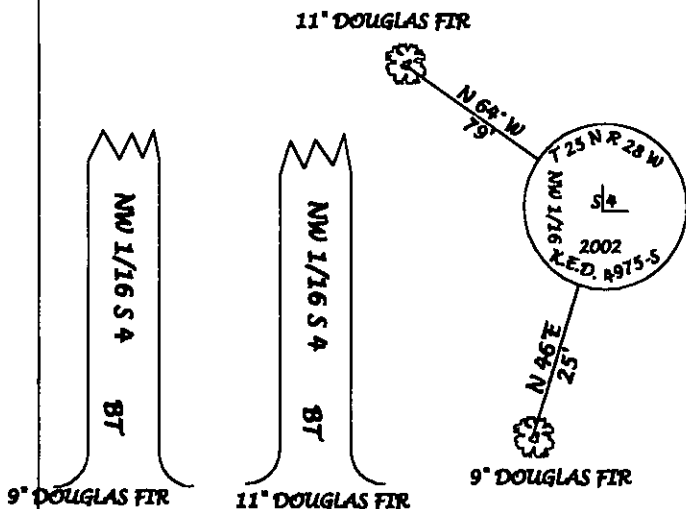
From which:

A 11 inch DBH Douglas fir which bears N 64° W 79 FEET

A 9 inch DBH Douglas fir which bears N 46° E 25 FEET

Painted six inch wide bands and attached warning and Bearing Tree signs to both trees

Magnetic Declination 17° E



## CERTIFICATION

I, Rick Shaver certify the information herein is true and correct.

*Rick Shaver*  
Signature of Ground Party Chief

I, Kenneth E. Davis certify that this Corner Record correctly represents work performed by me or under my direction in compliance with the "Corner Recordation Act".

*Kenneth E. Davis*  
Signature of Surveyor & Seal

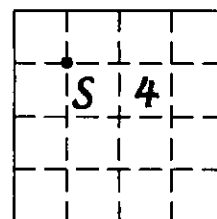
Date: *3/14/03*

Employer: *Shaver Surveying, Inc.*

Sketch of corner

Office of Clerk and Recorder, County of *Lincoln*  
This "corner record" was filed for record on *3/14/03*  
was noted on the cross-index plat and is assigned page No. *10604*  
in book No. *Coral M. Cummings*  
County Official: *Debra J. Blythe*

Doc# 166045



Cross index No: NW 1/16 Sec. 4 twp. 25N., R. 28W., P.M.M.

● THIS CORNER