

CERTIFIED CORNER RECORDATION

Corner: C-E-E-NW 1/256 SEC. 4 TWP. 25N., R. 28W., P.M.M.

LINCOLN COUNTY, MONTANA

RECORD:

NONE

FOUND EVIDENCE:

2 INCH DIAMETER PIPE

Perpetuation:

Set a 3 1/4 inches diameter aluminum cap stamped (See diagram below) attached to a 5/8 inch diameter x 30 inches long rebar 28 inches in the ground.

Established the following two new Bearing trees (See diagram below)

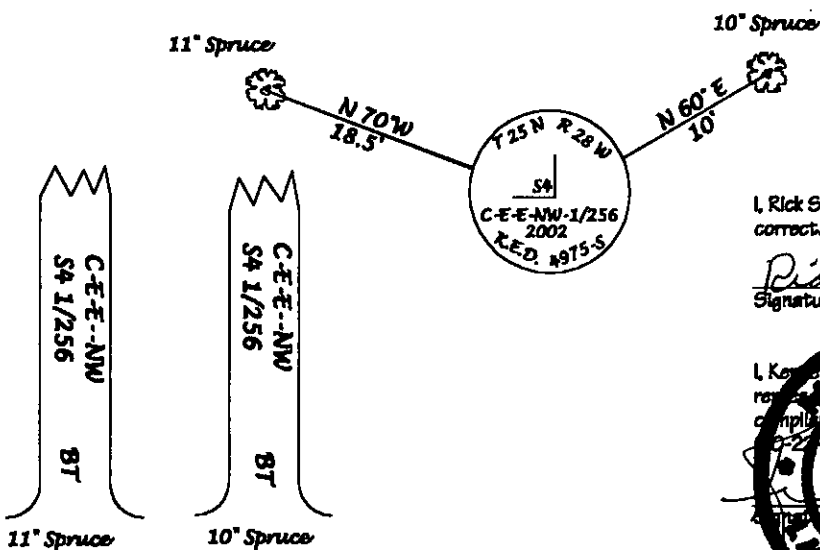
From which:

A 11 inch DBH Spruce which bears N 70° W 18.5 FEET

A 10 inch DBH Spruce which bears N 60° E 10 FEET

Painted six inch wide bands and attached warning and Bearing Tree signs to both trees

Magnetic Declination 17° E



CERTIFICATION

I, Rick Shaver certify the information herein is true and correct.

Rick Shaver
Signature of Ground Party Chief

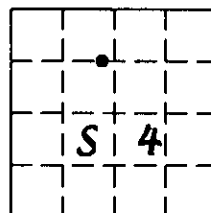
I, Kenneth B. Davis certify that this Corner Record correctly represents work performed by me or under my direction in compliance with the "Corner Recordation Act".

Kenneth B. Davis
Signature of Surveyor
DAVIS
4975-S
Employer: *Surveying Inc.*

Sketch of corner

Office of Clerk and Recorder, County of *Lincoln*
This "corner record" was filed for record on *3/14/02*
was noted on the cross-index plat and is assigned page No. *10603*
In book No. *Book 201 Cummings*
Debra J. Blystone
County Official

Doc# 166044



Cross Index No: C-E-E-NW 1/256 SEC. 4 TWP. 25N., R. 28W., P.M.M.

This Corner •