

CERTIFIED CORNER RECORDATION

Corner: W 1/16 SEC. 4 TWP. 25N., R. 28W., P.M.M.

LINCOLN COUNTY, MONTANA

RECORD:

NONE

FOUND EVIDENCE:

NONE

Perpetuation:

Set a 3 1/4 inches diameter aluminum cap stamped (See diagram below) attached to a 5/8 inch diameter x 30 inches long rebar 28 inches in the ground.

Established the following two new Bearing trees (See diagram below)

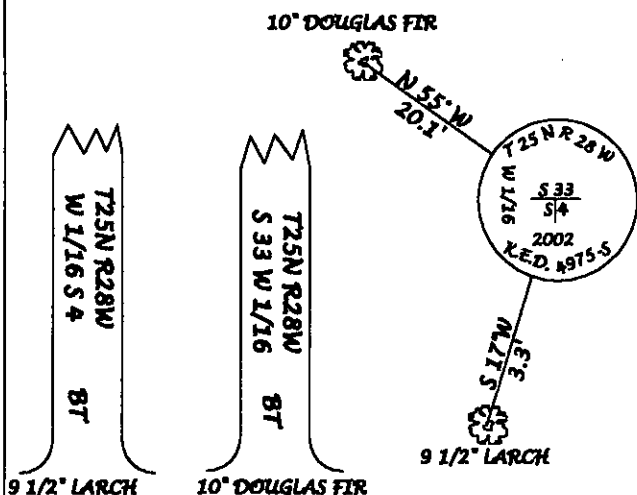
From which:

A 10 inch DBH Douglas fir which bears N 55° W 20.1 FEET

A 9 1/2 inch DBH Larch which bears S 17° W 3.3 FEET

Painted six inch wide bands and attached warning and Bearing Tree signs to both trees

Magnetic Declination 17° E



CERTIFICATION

I, Rick Shaver certify the information herein is true and correct.

Rick Shaver
Signature of Ground Party Chief

I, Kenneth E. Davis certify this Corner Record correctly represents the work performed by me or under my direction in compliance with the "Corner Recordation Act".

(7/22/01, 6/2001, MCA)
KENNETH E. DAVIS
Signature of Surveyor & Seal
Date: 3/14/03
Employer: KENNETH E. DAVIS
4975-5

Sketch of corner

Office of Clerk and Recorder, County of Lincoln
This "corner record" was filed for record on 3/14/03
was noted on the cross-index plat and is assigned page No. 10600
in book No. 10600
County Official

By Debra J. Shute

Doc # 16041

Cross Index No: W 1/16 Sec. 4 Twp. 25N., R. 28W., P.M.M.

● THIS CORNER

