

CERTIFIED LAND CORNER RECORDATION

1/4 CORNER COMMON TO SECS. 24 & 25 OF TWP. 22N., R. 30 W., M.P.M. And (See below)*

DESCRIPTION OF CORNER EVIDENCE FOUND, AND ORIGINAL RECORD (IF KNOWN)

* 1/4 CORNER COMMON TO SECS. 25 & 26 OF TWP. 22 N., R. 30 W., M.P.M.

1/4 Cor. common to Secs. 25 & 26 of Twp. 22 N., R. 30 W., M.P.M. NOT RECOVERED
G.L.O set a post 3 Ft. long 4 ins. square 24 ins. in the ground for 1/4 Sec. Cor.

Marked 1/4 S on W face from which: A 12 inch fir bears N19°E 29 Lks. distant Marked 1/4 S BT-
A 16 inch fir bears S 60°05' W 75 Lks. distant Marked
1/4 S BT

NOT RECOVERED

1/4 Cor Common to Secs. 24 & 25 of Twp. 22 N., R. 30 W., M.P.M.

G.L.O. Set a Post 3 ft. long 4 ins. square 24 Ins. in the ground for 1/4 Sec. Cor.

Marked 1/4 S on W face from which: A 10 Inch Fir Bears N 41°55' W 41 Lks. distant marked
1/4 S BT - a 12 inch tamarack bears S 5°45' W 35 Lks distant Marked 1/4 S B.T. Not Recovered

DESCRIPTION OF MONUMENT AND ACCESSORIES ESTABLISHED
TO PERPETUATE THE ORIGINAL LOCATION OF THIS CORNER:

Date of work November, 1975

SEE REVERSE SIDE

SKETCH, WITH COURSE AND DISTANCE TO ADJACENT CORNERS IF DETERMINED IN THIS SURVEY.
(MAY SKETCH OR PASTE REPRODUCTION ON REVERSE SIDE.)

SEE REVERSE SIDE

Surveyor's Seal

I, Jack H. Ninneman
certify that the information shown herein is true and correct.

Jack H. Ninneman
Signature of Ground Party Chief

I, Jack W. Ninneman
certify that I have carefully performed or reviewed the work done on the diagrammed corner as reported on this recordation form and approve the same.

Jack W. Ninneman
Signature of Surveyor

DIAGRAM OF CORNER:

N.

See Reverse
Side

= Corner recorded on the sheet

534 E.S.
Registration Number

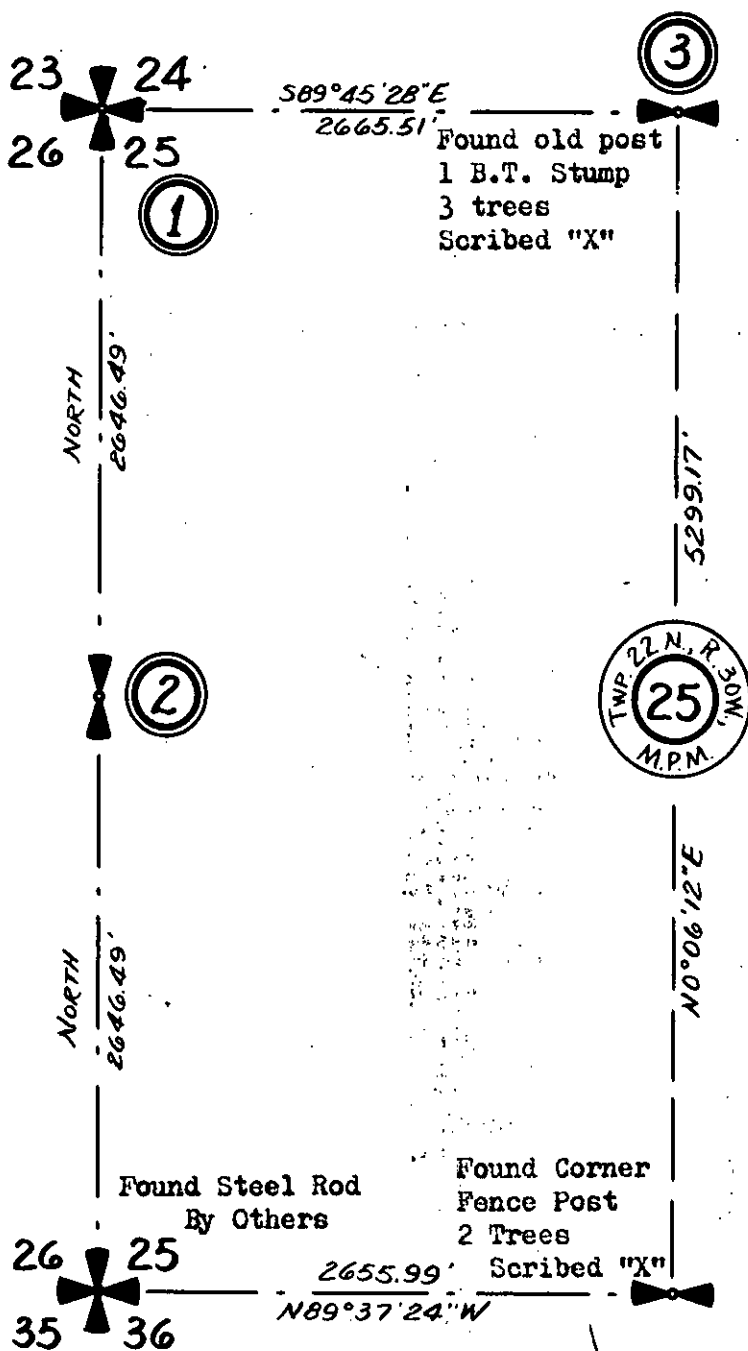
Office of Clerk and Recorder, County of Lincoln

This "corner record" was filed for record on the 19th day of January 1976, was noted on the cross-index plat and is

assigned page No. 391, in book No. 1

Eleanor L. Vaughn By: Mae Watson
County Official Deputy

TWP. 22 N., R. 30 W.



(1) Found Steel Pipe By Others
3 Old STaubs Flat 4 Sides &
4 Pits With 1 Mound With W.W.P.
B.C. S 89° 46' 59" W 41.18' &
W.W.P. B.C. S 88° 37' 16" E 42.68'

(2) Set A Capped Steel Rod Stamped
J.N. 534 E.S. 3/4" X 18" Long
- 16" Fir Bears S 67° 36' W 12.9'
Scribed 1/4 S 26 B.T. & Posted
- 14" Fir Bears N 64° 40' E 15.0'
Scribed 1/4 S 25 B.T. & Posted
- 8" Fir Bears N 71° 30' E 8.4'
& Posted

(3) Found Old Post Remains 1 B.T.
Stump & Posted & Scribed
3 Trees Scribed "X"
Set a 1/2" X 24" Steel Rod
With Cap Stamped J.N. 534 E.S.