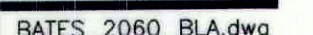


CERTIFICATE OF SURVEY
W1/2 OF SECTION 33, T37N, R27W, P.M.,M.
LINCOLN COUNTY, MONTANA



CURVE	RADIUS	ARC LENGTH	DELTA ANGLE	RADIAL BEARING-IN	RADIAL BEARING-OUT
C1	370.00'(M)(R)	175.89'(M) 175.19'(R)	27°14'11"	S89°32'00"W	S62°17'49"W
C2	180.00'(M)(R)	203.98'(M) 204.05'(R)	64°55'47"	N25°31'46"W	S89°32'27"W
C3	150.00'(M)(R)	169.96'(M) 170.04'(R)	64°55'08"	N25°32'04"W	S89°32'48"W
C4	210.00'(M)(R)	238.01'(M) 238.06'(R)	64°56'15"	N25°31'33"W	S89°32'12"W
C5	100.00'(M)(R)	100.74'(M) 100.65'(R)	57°43'21"	S25°26'49"E	S83°10'10"E
C6	130.00'(M)(R)	130.97'(M) 130.84'(R)	57°43'21"	S25°26'49"E	S83°10'10"E
C7	300.00'(M)(R)	129.80'(M)(R)	24°47'22"	S73°25'42"W	S48°38'19"W
CP	1430.00'(M)(P)	102.18'(M) 102.06'(R)	4°05'39"	S48°28'51"W	S44°23'12"W