

CERTIFICATE OF SURVEY "RETRACEMENT"

LOTS 11-15, PIONEER JUNCTION SUBDIVISION, AMENDED PLAT No. 4234
NE1/4, SECTION 26, T.30N., R.31W., P.M.,MT.

LINCOLN COUNTY, MT

FOR: CLYDE E. & BETTY L. ROSS DATE: SEPTEMBER, 2019

PURPOSE OF SURVEY

The purpose of this survey is the retracement of Lots 11-15, Pioneer Junction Subdivision, Amended Plat No. 4234, the reestablishment of obliterated corners and mark property boundaries. Therefore no division of land is hereby created and is exempt from review as a subdivision, pursuant to Section 76-3-404 MCA.

HISTORY OF SURVEYS

1958 - Plat No. 2261-A, Pioneer Junction Subdivision, Ira C. Miller
1985 - Amended Plat No. 4234, Pioneer Junction Subdivision, Gerald E. Bunton, 4974S
1999 - Plat No. 6274, Amended Pioneer Junction Subdivision, Alvah F. Hughes, 7322LS

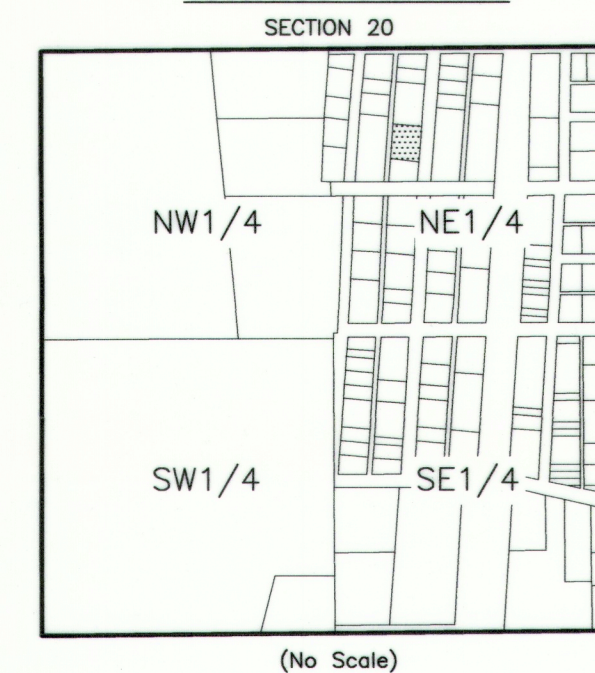
METHOD OF SURVEY

A Nikon total station with data collector and a Trimble R8 GNSS GPS system were used with RTK radial procedures to tie the previously set controlling corners and road alignments by Levi Powel, August, 2019.

BASIS OF BEARING

The basis of bearing for this survey is N89°55'22"E derived from Survey Grade GPS system calibrated to local control between the southwest corner Lot 36, Block 5, Plat No. 4234, a found 5/8 inch rebar with a plastic cap marked GEB 4974S and the southeast corner Lot 18, Block 4, Plat No. 4234 a found 5/8 inch diameter rebar with a plastic cap marked HUGHES 7322LS.

VICINITY DIAGRAM



LEGEND

- FOUND 5/8 INCH DIAMETER REBAR WITH PLASTIC CAP MARKED GEB 4974S
- ⊙ FOUND 5/8 INCH DIAMETER REBAR WITH PLASTIC CAP MARKED HUGHES 7322LS
- SET 5/8 INCH DIAMETER REBAR WITH PLASTIC CAP MARKED HUGHES 7322LS
- COMPUTED POINT
- () RECORD, PLAT No. 4234
- { } RECORD, PLAT No. 6274
- BOUNDARY LINES
- ADJOINING BOUNDARIES
- CENTERLINE OF ROAD

LEGAL DESCRIPTION: LOTS 11-15 AMENDED PLAT No. 4234

A parcel of land lying south of Libby, Montana, Lincoln County, within the NE1/4, Section 26, T.30N., R.31W., P.M.,MT., and more particularly described as follows:

Lots 11-15, Pioneer Junction Subdivision, Amended Plat No. 4234, containing 0.480 acres and subject to and together with all appurtenant easements of record.

