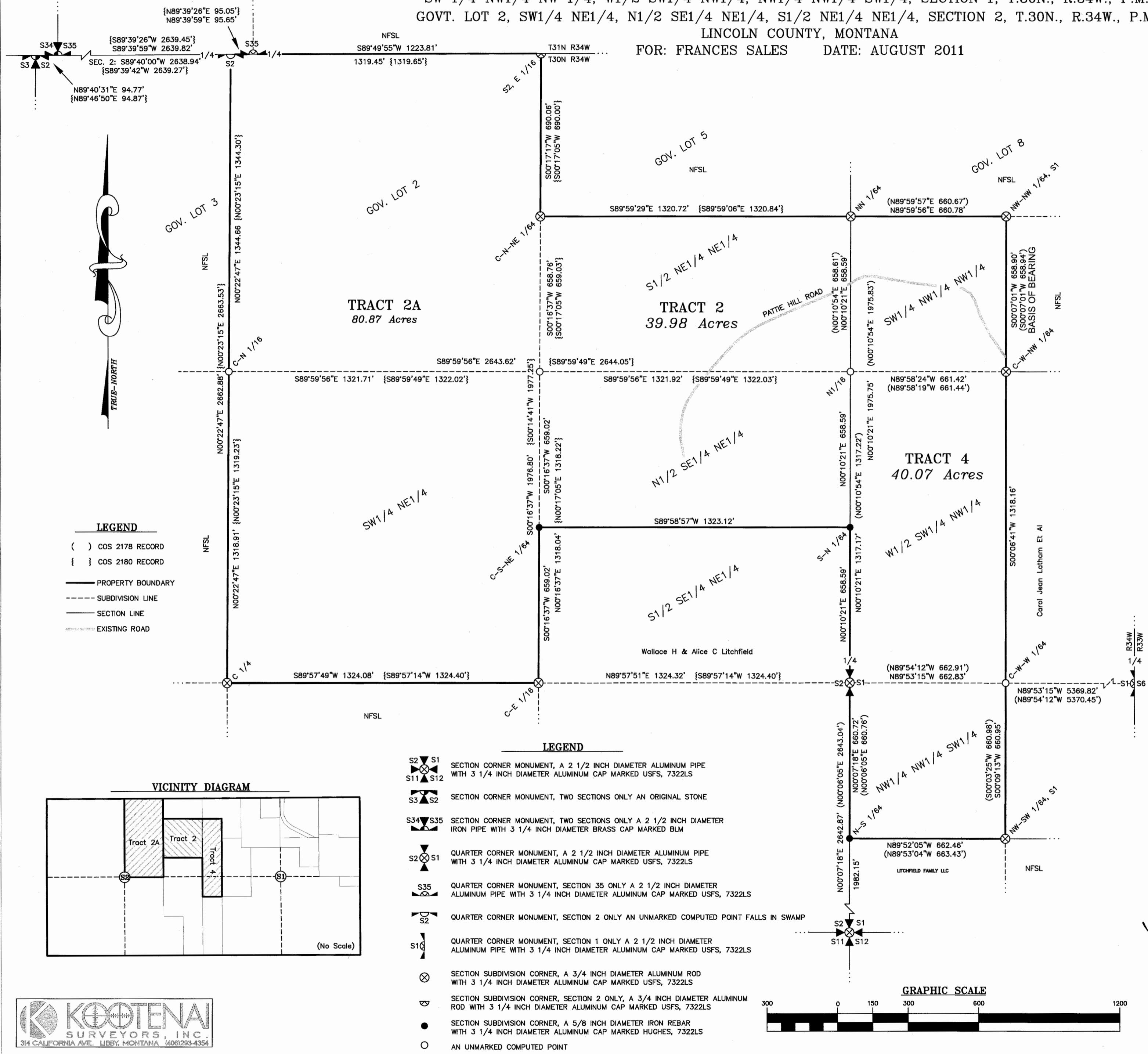


# CERTIFICATE OF SURVEY

## "COS 4114 CORRECTION"

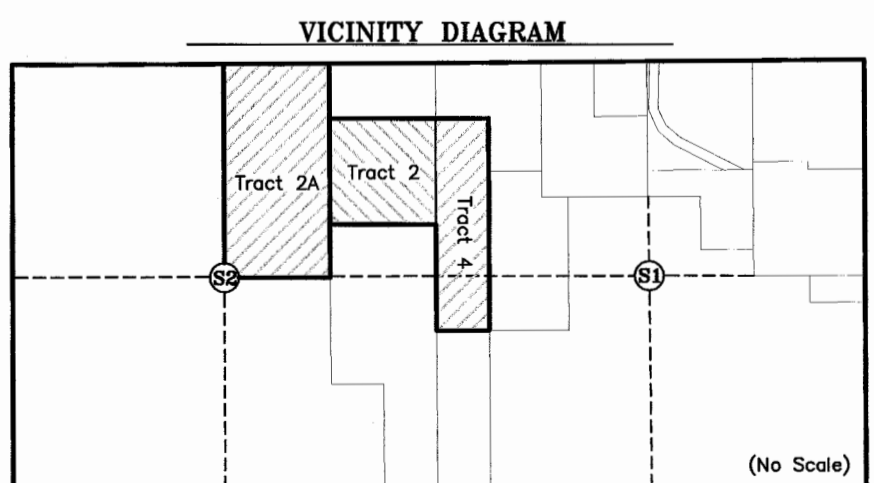
SW 1/4 NW1/4 NW 1/4, W1/2 SW1/4 NW1/4, NW1/4 NW1/4 SW1/4, SECTION 1, T.30N., R.34W., P.M.,MT.  
 GOVT. LOT 2, SW1/4 NE1/4, N1/2 SE1/4 NE1/4, S1/2 NE1/4 NE1/4, SECTION 2, T.30N., R.34W., P.M.,MT.  
 LINCOLN COUNTY, MONTANA  
 FOR: FRANCES SALES      DATE: AUGUST 2011



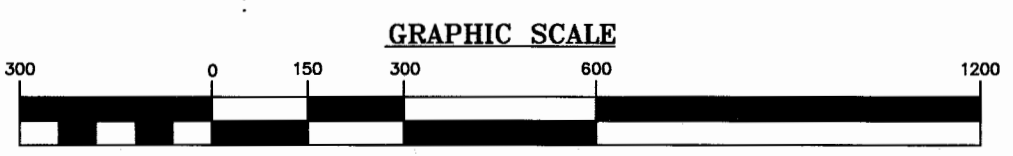
**LEGEND**

( ) COS 2178 RECORD  
 { } COS 2180 RECORD

— PROPERTY BOUNDARY  
 - - - SUBDIVISION LINE  
 - - - SECTION LINE  
 - - - EXISTING ROAD



- LEGEND**
- S2 S1 SECTION CORNER MONUMENT, A 2 1/2 INCH DIAMETER ALUMINUM PIPE WITH 3 1/4 INCH DIAMETER ALUMINUM CAP MARKED USFS, 7322LS
  - S11 S12
  - S3 S2 SECTION CORNER MONUMENT, TWO SECTIONS ONLY AN ORIGINAL STONE
  - S34 S35 SECTION CORNER MONUMENT, TWO SECTIONS ONLY A 2 1/2 INCH DIAMETER IRON PIPE WITH 3 1/4 INCH DIAMETER BRASS CAP MARKED BLM
  - S2 S1 QUARTER CORNER MONUMENT, A 2 1/2 INCH DIAMETER ALUMINUM PIPE WITH 3 1/4 INCH DIAMETER ALUMINUM CAP MARKED USFS, 7322LS
  - S35 QUARTER CORNER MONUMENT, SECTION 35 ONLY A 2 1/2 INCH DIAMETER ALUMINUM PIPE WITH 3 1/4 INCH DIAMETER ALUMINUM CAP MARKED USFS, 7322LS
  - S2 QUARTER CORNER MONUMENT, SECTION 2 ONLY AN UNMARKED COMPUTED POINT FALLS IN SWAMP
  - S10 QUARTER CORNER MONUMENT, SECTION 1 ONLY A 2 1/2 INCH DIAMETER ALUMINUM PIPE WITH 3 1/4 INCH DIAMETER ALUMINUM CAP MARKED USFS, 7322LS
  - SECTION SUBDIVISION CORNER, A 3/4 INCH DIAMETER ALUMINUM ROD WITH 3 1/4 INCH DIAMETER ALUMINUM CAP MARKED USFS, 7322LS
  - SECTION SUBDIVISION CORNER, SECTION 2 ONLY, A 3/4 INCH DIAMETER ALUMINUM ROD WITH 3 1/4 INCH DIAMETER ALUMINUM CAP MARKED USFS, 7322LS
  - SECTION SUBDIVISION CORNER, A 5/8 INCH DIAMETER IRON REBAR WITH 3 1/4 INCH DIAMETER ALUMINUM CAP MARKED HUGHES, 7322LS
  - AN UNMARKED COMPUTED POINT



**PURPOSE OF SURVEY**  
 The purpose of this survey is to CORRECT drafting errors found in the SE corner of "Tract 4", COS 4114. Notably, the C-W-W 1/64 corner shown as a set monument in the previous survey was not set and has been changed thus to an unmarked computed point. Moreover, the adjacent property ownership previously shown as NFSL east of the NW1/4 NW1/4 SW1/4, Section 1, has been corrected to properly reflect current ownership as of the date of this survey.

**LEGAL DESCRIPTION PARCEL "TRACT 2"**  
 An aliquot section of land, lying south of Troy, Montana, Lincoln County and more particularly described as follows: S1/2 NE1/4 NE1/4, N1/2 SE1/4 NE1/4, Section 2, T.30N., R.34W., P.M.,MT., being 39.98 acres. Subject to and together with all appurtenant easements of record.

**LEGAL DESCRIPTION PARCEL "TRACT 2A"**  
 An aliquot section of land, lying south of Troy, Montana, Lincoln County and more particularly described as follows: Government Lot 2 and SW1/4 NE1/4, Section 2, T.30N., R.34W., P.M.,MT., being 80.87 acres. Subject to and together with all appurtenant easements of record.

**LEGAL DESCRIPTION PARCEL "TRACT 4"**  
 An aliquot section of land, lying south of Troy, Montana, Lincoln County and more particularly described as follows: SW1/4 NW1/4 NW1/4, W1/2 SW1/4 NW1/4, NW1/4 NW1/4 SW1/4, Section 1, T.30N., R.34W., P.M.,MT., being 40.07 acres. Subject to and together with all appurtenant easements of record.

**BASIS OF BEARING**  
 The basis of bearing for this survey is S00°07'01"W, as shown on Certificate of Survey No. 2178 between the NW-NW 1/64 corner of Section 1 and the C-W-NW 1/64 Sections 1, T.30N., R.34W., P.M.,MT. both being a 3/4 inch diameter aluminum rod with 3 1/4 inch diameter aluminum cap marked USFS, 7322LS

**METHOD OF SURVEY**  
 A total station with closed traverse procedures to tie previously set controlling monuments by Mike Tester, November 2006.

**HISTORY OF SURVEYS**  
 1903 - GLO original Township Lines, D. P. Mumbrue  
 1914 - GLO original Township Subdivision, L. D. Lyman  
 1924 - GLO Supplemental Plat, Sections 1 and 2, G. Bullard  
 1968 - BLM Remonumentation of original corners, W. E. Darn  
 1994 - COS No. 2178, Dependent Resurvey and Subdivision of Section 1, Alvah Hughes, 7322LS  
 1994 - COS No. 2180, Dependent Resurvey and Subdivision of Section 2, Alvah Hughes, 7322LS  
 2011 - COS No. 4114, Retracement, Alvah Hughes, 7322LS

**LAND SURVEYOR'S CERTIFICATION**  
 I hereby certify that I am a Registered Land Surveyor in the State of Montana, that the survey shown on this Certificate of Survey has been prepared under my supervision and in accordance with the Montana Code Annotated, Sections 76-3-101 through 76-3-625, and the Lincoln County Regulations adopted pursuant thereto.

Alvah F. Hughes, PLS, 7322LS      Nov 09, 2011      Date  
 ALVAH F. HUGHES  
 7322 LS  
 REGISTERED  
 PROFESSIONAL LAND SURVEYOR

**CLERK AND RECORDER'S CERTIFICATION**  
 State of Montana, County of Lincoln, filed this 10<sup>th</sup> day of November, 2011, A.D. at 2:30 o'clock P.M.  
 Jimmy D. Lauer      by      Jeannie Duanis  
 Lincoln County Clerk & Recorder      Deputy

DOCUMENT No. 235882  
 CERTIFICATE OF SURVEY No. 4116