

CERTIFICATE OF SURVEY

"RETRACEMENT"

NW1/4, SECTION 31, T35N R25W, P.M., MT. SE1/4, SECTION 35, T35N R26W, P.M.MT.

NE1/4, SE1/4, SW1/4, SECTION 36, T35N R26W, P.M.MT.

LINCOLN COUNTY, MONTANA

FOR: ROBERT F. DUNLAP JR. DATE: AUGUST 2011

LEGAL DESCRIPTION, PARCEL "A"

An irregular tract of land southeasterly from Eureka, Montana, Lincoln County, and lying in NE1/4 SE1/4, NW1/4 SW1/4, SE1/4 SW1/4, Section 36, T.35N., R.26W., P.M.MT. Commencing at the Quarter Corner of Sections 35 and 36, a 2 1/2 inch diameter aluminum pipe with 3 1/4 inch diameter USFS aluminum cap, marked "4661S" also being the TRUE POINT OF BEGINNING:

Thence along midline of said section, S89°49'39"W, 1313.95 feet, a set 5/8 inch diameter rebar with plastic cap marked "HUGHES 7322LS"; Thence along a diagonal line through the NE1/4 SE1/4, S44°48'23"E, 1861.51 feet, a 2 1/2 inch diameter aluminum pipe with 3 1/4 inch diameter, aluminum cap marked "SMITH, 4740LS"; Thence along the section line between sections 35 and 36, N00°05'30"E, 1324.68 feet to the TRUE POINT OF BEGINNING, containing 19.97 acres. Subject to and together with all appurtenant easements of record.

LEGAL DESCRIPTION, PARCEL "B"

An irregular tract of land southeasterly from Eureka, Montana, Lincoln County, and lying in NE1/4 SW1/4, NW1/4 SW1/4, SE1/4 SW1/4, Section 36, T.35N., R.26W., P.M.MT. Commencing at the Quarter Corner of Sections 35 and 36, a 2 1/2 inch diameter aluminum pipe with 3 1/4 inch diameter USFS aluminum cap, marked "4661S" also being the TRUE POINT OF BEGINNING:

Thence along the Section Line between sections 35 and 36, S00°05'30"W, 1324.68 feet to S1/16th corner, a 2 1/2 inch diameter aluminum pipe with 3 1/4 inch diameter, aluminum cap marked "SMITH, 4740LS"; Thence along a west-east subdivision line, N89°58'14"E, 1321.28 feet to SW1/4 Corner said section 36, a 2 1/2 inch diameter aluminum pipe with 3 1/4 inch diameter, aluminum cap marked "SMITH, 4740LS"; Thence along a north-south Subdivision Line S00°03'05"W, 1324.17 feet to W1/16th Corner between said Section 36 and section 1, T34N R26W, a 2 1/2 inch diameter aluminum pipe with 3 1/4 inch diameter, aluminum cap marked "SMITH, 4740LS"; Thence along said Section Line, S89°58'06"E, 110.92 feet, a set 5/8 inch diameter rebar with plastic cap marked "HUGHES 7322LS" on the westerly Right-of-Way limits of "Mission Mountain Railroad" being 100 feet from the existing railroad track centerline; Thence along easement limits, a curve to the right having a radius of 1694.81 feet, delta 11°38'55", arc length 344.56 feet, a set 5/8 inch diameter rebar with plastic cap marked "HUGHES 7322LS"; Thence along said limits, a Spiral Transitional Curve to the right for a radius 1694.81 foot curve, theta 7°32'40", arc length 433.08 feet, a set 5/8 inch diameter rebar with plastic cap marked "HUGHES, 7322LS"; Thence along said limits N19°28'43"E, 2008.52 feet, a set 5/8 inch diameter rebar with plastic cap marked "HUGHES 7322LS"; Thence along an east-west Midline of Section 36, S89°59'02"W, 2260.45 feet to the TRUE POINT OF BEGINNING, containing 69.41 acres. Subject to and together with all appurtenant easements of record.

LEGAL DESCRIPTION, PARCEL "C"

An irregular tract of land southeasterly from Eureka, Montana, Lincoln County, and lying in SE1/4, SE1/4 SW1/4, NE1/4 SW1/4, Section 36, T.35N., R.26W., P.M.MT. Commencing at the CE1/16th Corner, said Section 36, a 2 1/2 inch diameter aluminum pipe with 3 1/4 inch diameter, aluminum cap marked "SMITH, 4740LS" also being the TRUE POINT OF BEGINNING:

Thence along a west-east section midline N89°58'16"E, 1321.64 feet and the Quarter Corner between Section 31, T.35N., R.25W. and Section 36, T.35N. R.26W., a 1 1/2 inch diameter iron pipe; Thence along said Section Line S00°01'33"E, 2647.87 feet to the corner of Section 36, T.35N. R.26W., Section 31, T.35N. R.25W., and Section 1, T.34N. R.25W., a 2 inch diameter iron pipe with brass cap marked "4232S"; Thence along the Section Line between said Sections 1 and 36 S89°58'41"W, 2646.16 feet to the Quarter Corner between said Sections, a 2 1/2 inch diameter aluminum pipe with 3 1/4 inch diameter aluminum cap marked "7322LS"; Thence along said line, S89°58'06"W, 911.14 feet to the easterly Right-of-Way limits of "Mission Mountain Railroad" being 200 feet from the existing railroad track centerline, a set 5/8 inch diameter rebar with plastic cap marked "HUGHES, 7322LS"; Thence along said easement limits, a curve to the right having a radius of 1394.81 feet, delta 11°35'08", arc length 282.04 feet, a set 5/8 inch diameter rebar with plastic cap marked "HUGHES 7322LS"; Thence along said limits on a Spiral Transitional Curve to the right, radius 1394.81 feet, theta 7°32'40", arc length 393.47 feet, a set 5/8 inch diameter rebar with plastic cap marked "HUGHES 7322LS"; Thence along said limits N19°28'43"E, 2113.36 feet, a set 5/8 inch diameter rebar with plastic cap marked "HUGHES 7322LS"; Thence along a west-east midline, said Section 36, N89°59'02"E, 63.15 to the C 1/4, said Section, a 2 1/2 inch diameter aluminum pipe with 3 1/4 inch diameter, aluminum cap marked "SMITH, 4740LS"; Thence along said midline N89°59'56"E, 1321.52 feet to the TRUE POINT OF BEGINNING, containing 192.67 acres. Subject to and together with all appurtenant easements of record.

LEGAL DESCRIPTION, "TRACT 2, COS 1866"

An irregular tract of land southeasterly from Eureka, Montana, Lincoln County, and lying in SW1/4 NW1/4, Section 31, T.35N., R.25W., P.M.MT. Commencing at the Quarter Corner of Sections 36 and 31, T.35N., R.25W., 1 1/2 inch diameter iron pipe; Thence N00°05'07"W 121.85 feet, a set 5/8 inch diameter rebar with plastic cap marked "HUGHES 7322LS" and the TRUE POINT OF BEGINNING:

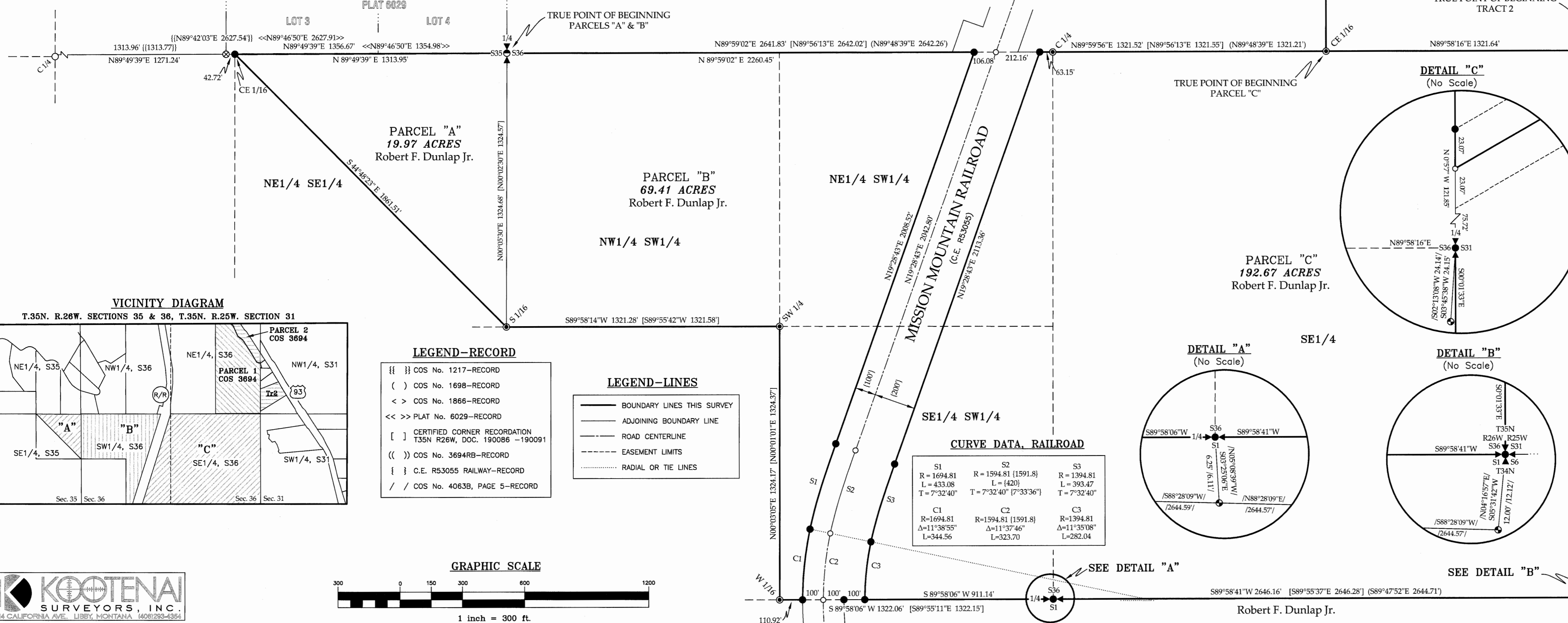
Thence along the section line between said sections 31 and 36 N00°05'07"W, 618.95 feet, a 5/8 inch diameter rebar plastic cap marked "BURTON 5428S" and the northwesterly Corner of Tract 2, COS 1866; Thence along the northerly boundary of said Tract N70°32'07"E, 557.98 feet, a 5/8 inch diameter rebar plastic cap marked "BURTON 5428S" and the westerly easement limits of "U.S. Highway 93"; Thence along said limits S31°05'56"E, 105.43 feet, a set 5/8 inch diameter rebar with plastic cap marked "HUGHES 7322LS"; Thence along easement limits, a curve to the left having a radius 23116.41 feet, delta 0°49'02", arc length 329.71 feet, a set 5/8 inch diameter rebar with plastic cap marked "HUGHES 7322LS" and northerly easement limits of a "Private Driveway", 20 feet from centerline; Thence along said highway limits, a curve to the left having a radius 23116.41 feet, delta 0°02'59", arc length 20.06 feet, a computed point, not set and centerline of said "Private Driveway"; Thence along said centerline, S60°01'23"W, 885.45 feet, a computed point, not set and the Section Line between said Sections 31 and 36; Thence along said line N00°05'07"W, 23.07 feet to the TRUE POINT OF BEGINNING, containing 8.48 acres. Subject to and together with all appurtenant easements of record.



LEGEND-SYMBOLS

- SECTION CORNER-A 2 INCH DIAMETER IRON PIPE WITH BRASS CAP MARKED "4232S"
- QUARTER CORNER-A 1 1/2 INCH DIAMETER IRON PIPE
- QUARTER CORNER-A 2 1/2 INCH DIAMETER ALUMINUM PIPE WITH 3 1/4 INCH DIAMETER ALUMINUM CAP MARKED "7322LS"
- QUARTER CORNER, A 2 1/2 INCH DIAMETER ALUMINUM PIPE WITH 3 1/4 INCH DIAMETER USFS ALUMINUM CAP, MARKED "4661S"
- A 5/8 INCH DIAMETER ALUMINUM ROD WITH 3 1/4 INCH DIAMETER USFS ALUMINUM CAP MARKED "LS 9748"
- A 5/8 INCH DIAMETER REBAR PLASTIC CAP MARKED "BURTON 5428S"
- A 5/8 INCH DIAMETER REBAR PLASTIC CAP MARKED "7975S"
- A 5/8 INCH DIAMETER REBAR WITH PLASTIC CAP MARKED "MARQUARDT 7328S"
- A 2 1/2 INCH DIAMETER ALUMINUM PIPE WITH 3 1/4 INCH DIAMETER, ALUMINUM CAP MARKED "SMITH, 4740LS"
- SET 5/8 INCH DIAMETER REBAR WITH PLASTIC CAP MARKED "HUGHES 7322LS"
- COMPUTED POINT, NOT SET

EAGLE LAKE RANCH UNIT No. 1
PLAT 6029



PURPOSE OF SURVEY

The purpose of this survey is the retracement of existing parcels, therefore no additional parcels are hereby created and is exempt from review as a subdivision under the Montana Platting Act, pursuant to MCA 76-3-404.

METHOD OF SURVEY

A total station with data collector and a Trimble RB GPS system was used with RTK radial procedures to tie the previously set controlling corners and road alignments by Kelly Rooney, February, 2011.

SURVEYOR'S NOTES

The controlling corners being the southeast Section Corner, east Quarter Corner and south Quarter Corner of Section 36, T35N R26W, P.M.MT were relocated and monumented by proportional methods by Certificate of Survey No. 4063, filed in February 7, 2011. Surveys prior to this date utilized the positions with existing corners; all subdivision or tract corners were accepted at their original positions by this survey.

The northerly portion of Parcel 1, Certificate of Survey No. 3694RB is shown for information purposes only. Drawing derived from record data.

HISTORY OF SURVEYS

- 1983 - COS No. 1217, subdivision Sec. 35, Jack H. Ninneman, 4661S
- 1989 - COS No. 1698, subdivision Sec. 36, Thomas Sands, 7975S
- 1991 - COS No. 1866, creates Tracts along Highway 93, James Burton, 5428S
- 1997 - PLAT No. 6029, "Eagle Lake Ranch Unit 1", Dawn Marquardt, 7328S
- 2005 - Certified Corner Recordation Doc. No. 1, 190086 to 190091, Section subdivision diagram on document, S. R. Smith, 4740LS
- 2005 - COS No. 3694, adjoining parcels, Jane Eby, 8694ES
- 2007 - C.E. R53055, Revised Right-of-Way and Track Map, BNSF Railway
- 2011 - COS No. 4063, Dependant Resurvey, Lawrence A. Glahe, 9748LS

BASIS OF BEARING

The basis of bearing for this survey is N00°43'21"W, as shown on COS No. 3063, between the CS 1/16 and C 1/4 corners, Section 6, T34N R25W, being a 5/8 inch diameter rebar with plastic cap marked Marquardt, 7328S and a 5/8 inch diameter aluminum rod with 3 1/4 inch diameter aluminum cap marked PLS 9748

LAND SURVEYOR'S CERTIFICATION

I hereby certify that I am a Registered Land Surveyor in the State of Montana, that the survey shown on this Certificate of Survey has been prepared under my supervision and in accordance with the Montana Code Annotated, Sections 76-3-101 through 76-3-625, and the Lincoln County Regulations adopted pursuant thereto.

Alvah F. Hughes
Alvah F. Hughes, PLS 7322LS
Date: 8-31-2011

EXAMINING LAND SURVEYOR'S CERTIFICATION

Examined this 18th day of August, 2011, A.D.
Ronald A. Pearson, PLS, 9008LS Lincoln County Examining Land Surveyor

CLERK AND RECORDER'S CERTIFICATION

State of Montana, County of Lincoln, filed this 10th day of September, 2011, at 2:12 o'clock P.M.
Tommy D. Lauer by *Jeanne Penno*
Lincoln County Clerk & Recorder Deputy

CERTIFICATE OF SURVEY No. 4101 Doc 234524

