

CERTIFICATE OF SURVEY

DEPENDANT RESURVEY AND SECTION SUBDIVISION

THE SOUTHEAST QUARTER OF THE NORTHWEST QUARTER (SE NW),
THE SOUTHWEST QUARTER OF THE NORTHEAST QUARTER (SW NE),
THE NORTHEAST QUARTER OF THE SOUTHWEST QUARTER (NE SW) AND
THE NORTHWEST QUARTER OF THE SOUTHEAST QUARTER (NW SE)
OF SECTION 13, TOWNSHIP 35 NORTH, RANGE 26 WEST, P.M., MT.,
LINCOLN COUNTY, MONTANA

USDA FS KOOTENAI NATIONAL FOREST - FLANNIGANS POND

CONTRACT NO. AG82B1-D-10-0098

LINCOLN COUNTY, MONTANA

JULY-AUGUST 2010

PURPOSE OF SURVEY

THE PURPOSE OF THIS SURVEY IS TO RETRACE AND MARK A PORTION OF THE BOUNDARIES BETWEEN PUBLIC AND PRIVATE LAND OF AN EXISTING RECORD PARCEL, CAUSING NO DIVISION OF LAND (SECTION 76-3-404 MCA).

BASIS OF BEARINGS

BEARING DATUM IS UNIVERSAL TRANSVERSE MERCATOR (UTM), ZONE 11 NORTH, NAD83, DERIVED FROM GPS STATIC OBSERVATIONS USING TRIMBLE 4000 AND 4700SSI DUAL FREQUENCY RECEIVERS. COORDINATE DATUM HAS A COMBINED STATE PLANE AND SEA LEVEL FACTOR (CAF) OF 1.0002521548 DIRECTLY APPLIED TO UTM, ZONE 11 NORTH, NAD83 COORDINATE DATUM IN ORDER TO REPRESENT ACTUAL GROUND DISTANCES. GEODETIC NORTH FROM UTM IS AN ANGULAR ROTATION OF 1°34'51" TO THE RIGHT AT THE CENTER OF SECTION 13.

HISTORY OF SURVEYS

1894 - ORIGINAL G.L.O. SURVEY OF EXTERIOR BOUNDARIES BY P. MCCARDELL & A.L. JAQUETH

1894 - ORIGINAL G.L.O. SURVEY BY F.L. SIZER & A.L. JAQUETH. PLAT APPROVED 1895

1959 - B.L.M. REMONUMENTATION OF CERTAIN CORNERS. APPROVED 1966

1980 - CERTIFICATE OF SURVEY BY ES NO. 2989.

2003 - CERTIFICATE OF SURVEY NO. 3184 BY RPLS NO. 7328 S.

SURVEYOR'S NOTE

SEE CERTIFIED CORNER RECORDATION FORMS ON FILE WITH THE LINCOLN COUNTY, CLERK AND RECORDER'S OFFICE.

FOREST SUPERVISOR'S CERTIFICATE

THIS SURVEY WAS MADE AT MY REQUEST FOR NATIONAL FOREST MANAGEMENT PURPOSES.

Margaret Pottman
FOREST SUPERVISOR DATE 1/31/11

SURVEYOR'S CERTIFICATE

I HEREBY CERTIFY THAT I AM A REGISTERED LAND SURVEYOR IN THE STATE OF MONTANA, THAT THE SURVEY SHOWN ON THIS CERTIFICATE OF SURVEY HAS BEEN PREPARED IN CONFORMANCE WITH MONTANA CODE ANNOTATED (SECTIONS 76-3-101 THROUGH 76-3-614) AND THE LINCOLN COUNTY REGULATIONS ADOPTED PURSUANT THERETO.



LINCOLN COUNTY EXAMINING LAND SURVEYOR'S CERTIFICATION

EXAMINED THIS 11TH DAY OF JANUARY, 2011, A.D.

Ronald A. Pearson
RONALD A. PEARSON, PLS 9008LS

CERTIFICATE OF CLERK AND RECORDER

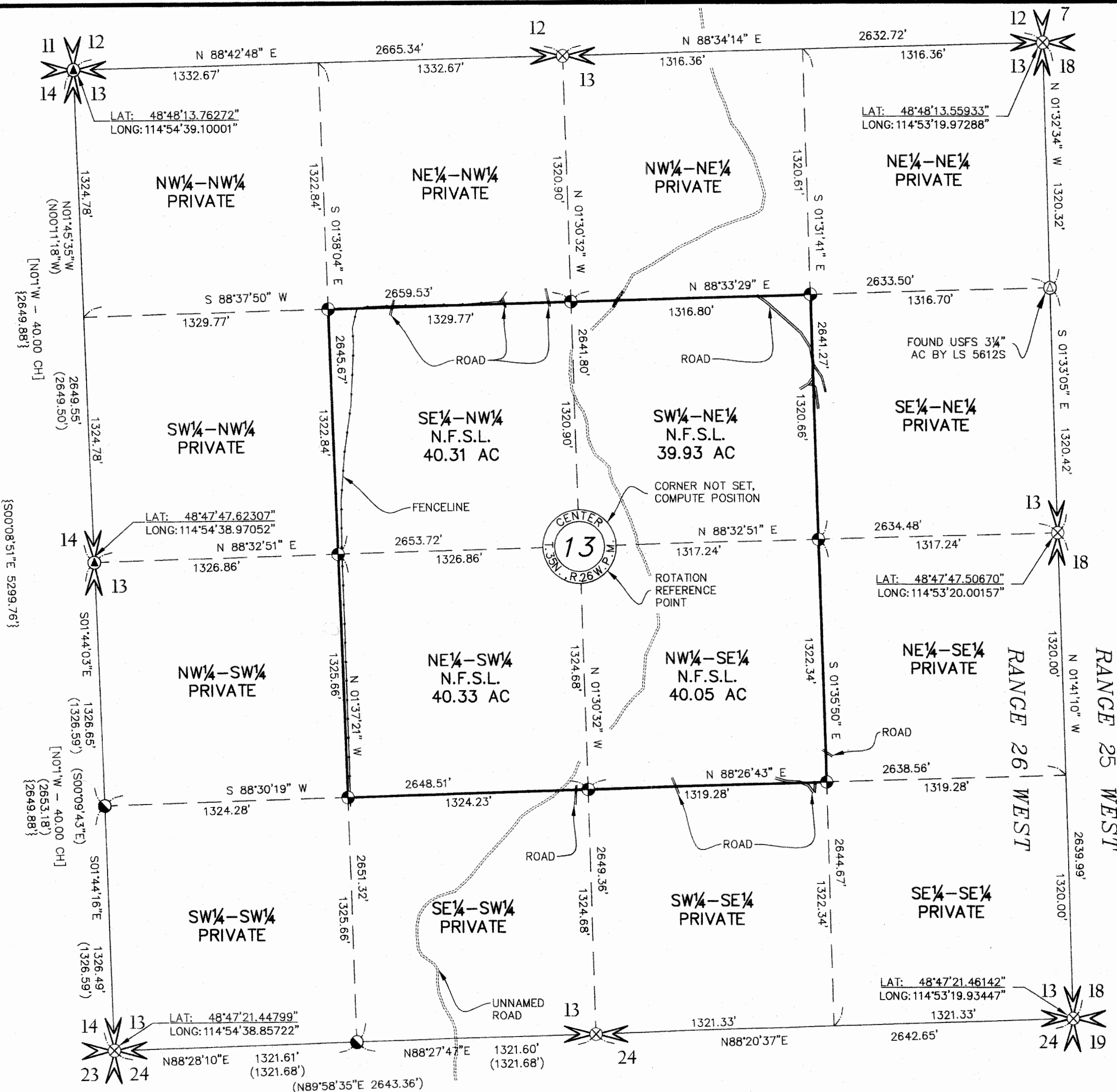
STATE OF MONTANA, COUNTY OF LINCOLN,
FILED THIS 17TH DAY OF FEBRUARY, 2011, A.D., AT 11:10 O'CLOCK A.M.

Johnny D. Lawrence *James D. Dennis*
COUNTY CLERK RECORDER DEPUTY

DOCUMENT NO. 231024

CERTIFICATE OF SURVEY NO. 4061

<div> <div>1/4</div> <div>SECTION</div> <div>TOWNSHIP</div> <div>RANGE</div> </div>				<div> <div>ARIZONA</div> <div>MONTANA</div> <div>IDAHO</div> <div>WASHINGTON</div> </div>				<div> <div>CERTIFICATE OF SURVEY</div> <div>FOR</div> <div>K.N.F. - FLANNIGANS POND</div> </div>			
<div> <div>13</div> <div>35</div> <div>N</div> <div>26</div> <div>W</div> </div>				<div> <div>GLAHE & ASSOCIATES</div> <div>PROFESSIONAL LAND SURVEYORS</div> <div>303 Church Street</div> <div>Sandpoint, Idaho 83864</div> </div>				<div> <div>Scale: 1" = 500'</div> <div>Checked By: LAG</div> <div>Date: MAY 2010</div> </div>			
<div> <div>Project No. 10-016 KNF FLANNIGAN</div> <div>File Name: 10-016 KNF ROS</div> <div>Plot Date: 1/7/2011</div> </div>				<div> <div>Drawn By: TLAG</div> <div>Sheet: 1 of 1</div> </div>							

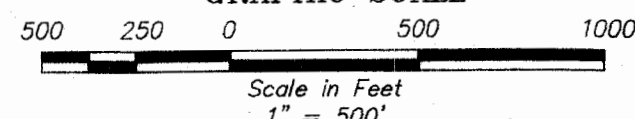


LEGEND

- SECTIONAL CORNER, AS NOTED
- SET A USFS 3/4" ALUMINUM CAP ON 5/8 REBAR, STAMPED LS 9748
- FOUND 3/4" BLM BRASS CAP
- FOUND 3/4" ALUMINUM CAP BY ES 2989
- FOUND REBAR W/ CAP - RLS #7328 S
- GLO
- CERTIFICATE OF SURVEY NO. 3184
- CERTIFICATE OF SURVEY BY ES NO. 2989 1980
- N.F.S.L. NATIONAL FOREST SYSTEMS LANDS
- PROPERTY BOUNDARY, MARKED AND POSTED BY THIS SURVEY TO USFS, REGION ONE STANDARDS
- SECTION LINE
- MINOR SUBDIVISION LINE

ROTATION TO GEODETIC NORTH-1°34'51" RT

GRAPHIC SCALE



SURVEY NARRATIVE-METHOD OF SURVEY

PROJECT: K.N.F. FLANNIGANS POND CADASTRAL SURVEY

FIELD WORK PERFORMED IN JULY, 2010.

THE SURVEY CONSISTED OF:
2 MILES OF BOUNDARY LINE MARKED AND POSTED.
EIGHT (8) CORNER POSITIONS REQUIRING MAINTENANCE.
ONE (1) CORNER POSITION REMONUMENTED.
EIGHT (8) CORNER POSITIONS SET.

THE PROJECT GPS CONTROL COORDINATES WERE ESTABLISHED BY NGS OPUS SOLUTIONS FROM THREE DIFFERENT BASE POINTS:
(1)DG9747 MTFV FLAT HEAD COMMUNI CORRS ARP, (2)DK4103 PLS6 POLSON 6 CORRS ARP, (3)DK4101 PLS5 POLSON 5 CORRS ARP;
BOTH SOLUTIONS YIELDED LESS THAN 0.018 (M) OF ERROR.

ALL CONTROLLING CORNERS WERE EITHER DIRECTLY OCCUPIED OR CONVENTIONALLY TIED FROM GPS POSITIONS ESTABLISHED UTILIZING TRIMBLE 4000 AND 4700SSI SERIES DUAL FREQUENCY RECEIVERS. THE GPS VECTORS WERE ADJUSTED BY SIMULTANEOUS LEAST SQUARES WITH "TRIMBLE GEOMATICS OFFICE" SOFTWARE. TRAVERSES ALONG PROPERTY LINES WERE PERFORMED CONVENTIONALLY WITH TOTAL STATIONS BETWEEN GPS POINTS. ALL TRAVERSES WERE CLOSED BY STANDARD METHODS AND ADJUSTED BY SIMULTANEOUS LEAST SQUARES TO 95% CONFIDENCE WITH "NETWORKS" SOFTWARE.