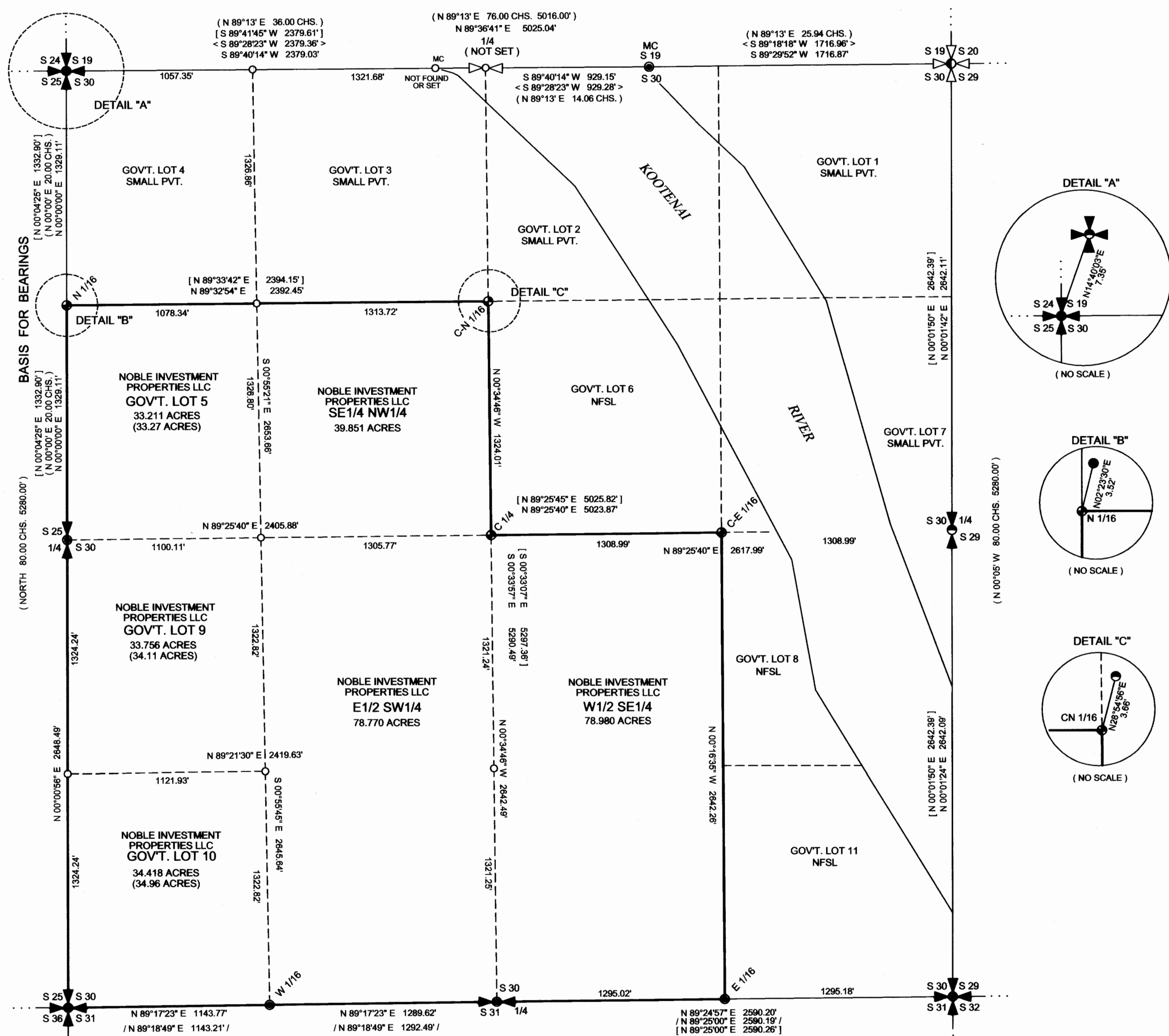


CERTIFICATE OF SURVEY

"Dependent Resurvey and Section Subdivision"
 W1/2 SE1/4, SE1/4 NW1/4, E1/2 SW1/4, GOV'T. LOTS 5,9 and 10, SECTION,30 T.31 N., R.31 W., P.M.,MT.
 LINCOLN COUNTY, MONTANA
 FOR: NOBLE INVESTMENTS PROPERTIES, L.L.C. DATE: JANUARY 2010

NORTH



PURPOSE OF SURVEY

The purpose of this survey is the retracement and dependent resurvey and Section subdivision of record parcels of land; establish of corners and perpetuate existing corners. Therefore no division of land is hereby created and is exempt from review as a subdivision pursuant Section 76-3-404 MCA.

HISTORY OF SURVEYS

- 1893, GLO Survey of Fractional West Boundary T.31N., R.31W. by D. Mumbroe.
- 1893, GLO Survey of Township Subdivisions, and Meanders T.31N., R.31W., by D. Mumbroe.
- 1962, 1963 BLM Remonumentation of Misc. Corners.
- 1977, COS No. 325 by J.W. Ninneman 534ES.
- 1987, COS No. 1622 by T.C. Hill 5612S.
- 1999, COS No. 2963 by S.R. Smith 4740S.
- 2003, Book 324, Page 612, Court Ordered Survey by K.E. Davis 4975S.
- 2008, COS No. 3784 by S.A. Boyer 9750LS.

LEGAL DESCRIPTION

W1/2 SE1/4, SE1/4 NW1/4, GOV'T. LOTS 5, 9 and 10, SEC. 30, T.31N., R.31W., P.M.,MT.

METHOD OF SURVEY

A total station and data collector were used with closed traverse procedures, along with RTK GPS systems to tie the previously BLM remonumented original controlling corners by Kelly Rooney, November 2009.

BASIS OF BEARING

The basis for bearings for this survey is "North" from found 2 1/4 inch diameter iron pipe with a 3 1/4 inch diameter BLM brass cap marking the west quarter corner and a 2 1/4 inch diameter Aluminum pipe with a 3 1/4 inch diameter Aluminum cap marked USFS 5612S, marking the northwest corner section 30.

LAND SURVEYOR'S CERTIFICATION

I hereby certify that I am a Registered Land Surveyor in the State of Montana, that the survey shown on this Certificate of Survey has been prepared under my supervision and in accordance with the Montana Code Annotated, Sections 76-3-101 through 76-3-625, and the Lincoln County Regulations adopted pursuant thereto.

Alvah F. Hughes, 7322LS 02-05-2010
 Alvah F. Hughes, PLS, 7322LS Date

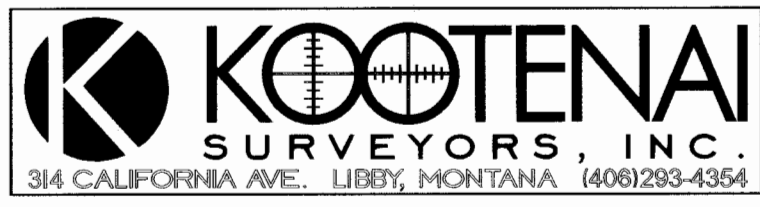
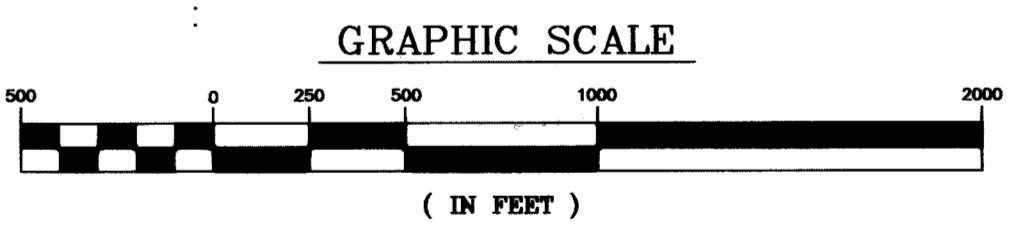
EXAMINING LAND SURVEYOR'S CERTIFICATION

Approved this 10TH day of FEBRUARY 2010, A.D.
Ronald A. Pearson
 Ronald A. Pearson, PLS 9008LS, Lincoln County Examining Land Surveyor

CLERK AND RECORDER'S CERTIFICATION

State of Montana, County of Lincoln, filed this 12th day
 of February 2010, A.D. at 3:05 o'clock p.m.
Tommy D. Lauer by *Joanna Senner*
 Lincoln County Clerk & Recorder Deputy

CERTIFICATE OF SURVEY NO. 3988 Doc 22492



- ### LEGEND
- SECTION CORNER, 1/4 CORNER, FOUND IRON OR ALUMINUM PIPE WITH A 3 1/4 INCH DIAMETER BLM BRASS OR USFS ALUMINUM CAP
 - SECTION CORNER, 1/4 CORNER, FOUND 2 1/2 INCH DIAMETER ALUMINUM PIPE WITH 3 1/4 INCH DIAMETER ALUMINUM CAP MARKED MDOT 4740S
 - SET 5/8 INCH DIAMETER REBAR WITH 3 1/4 INCH DIAMETER ALUMINUM CAP MARKED HUGHES 7322LS
 - BLM SECTION CORNER MONUMENT, 1/2 INCH REBAR PER 1963 BLM REMONUMENTATION
 - SUBDIVISION CORNER, FOUND 2 1/2 INCH DIAMETER ALUMINUM ROD WITH 3 1/4 INCH DIAMETER CAP MARKED 5612S
 - FOUND 5/8 INCH DIAMETER REBAR WITH CAP MARKED SMITH 4740S
 - FOUND 5/8 INCH DIAMETER REBAR WITH CAP MARKED KED 4975S
 - COMPUTED UNMARKED POINT
 - RECORD PER GENERAL LAND OFFICE SURVEY
 - RECORD PER COS NO. 3784
 - RECORD PER COS NO. 2963
 - RECORD PER COS NO. 1622
 - SECTION SUBDIVISION LINE
 - PROPERTY BOUNDARY THIS SURVEY

