

CERTIFICATE OF SURVEY

" RETRACEMENT "

W1/2 SW1/4, SECTION 2, N1/2 SW1/4, N1/2 SE1/4, SECTION 3, T.27 N., R.30 W., P.M.,MT.

LINCOLN COUNTY, MONTANA

FOR: PLUM CREEK TIMBER CO.

DATE: NOVEMBER 2008

PURPOSE OF SURVEY

The purpose of this survey is the retracement of record parcels of land; establishment of minor subdivision corners; perpetuate existing corners, mark and maintain property boundaries. Therefore, no division of land is hereby created and is exempt from review as a subdivision, pursuant to 76-3-404, MCA.

HISTORY OF SURVEYS

1900, GLO Survey of Township Boundary, and Subdivisions, B. Adams

1964-1965, BLM Remonumentation of Original Corners, R. Larimer, R. Leedy

1991, COS No. 1884, Section Subdivision SE1/4, Section 2 by R. Goacher, 7318S

2000, COS No. 2994, Section Subdivision Sections 2 and 3 by USFS, R. Green, 13769LS

METHOD OF SURVEY

A total station and data collector were used with closed traverse procedures, along with R8 GPS system to tie the previously BLM and USFS remonumented original controlling corners by Kelly Rooney, November 2008.

BASIS OF BEARING

The basis for bearing for this survey is N89°47'04"E, as shown on COS No. 2994, between the SW section corner and the S1/4 corner, Section 2, both 3 1/4 inch diameter BLM brass capped monuments.

LAND SURVEYOR'S CERTIFICATION

I hereby certify that I am a Registered Land Surveyor in the State of Montana, that the survey shown on this Certificate of Survey has been prepared under my supervision and in accordance with the Montana Code Annotated, Sections 76-3-101 through 76-3-625, and the Lincoln County Regulations adopted pursuant thereto.

Alvah F. Hughes, 7322LS *Dec. 18, 2008*
Alvah F. Hughes, PLS, 7322LS Date



EXAMINING LAND SURVEYOR'S CERTIFICATION

Examined this 12TH day of December, 2008, A.D.

Ronald A. Pearson
Ronald A. Pearson, PLS, 9008LS

Date

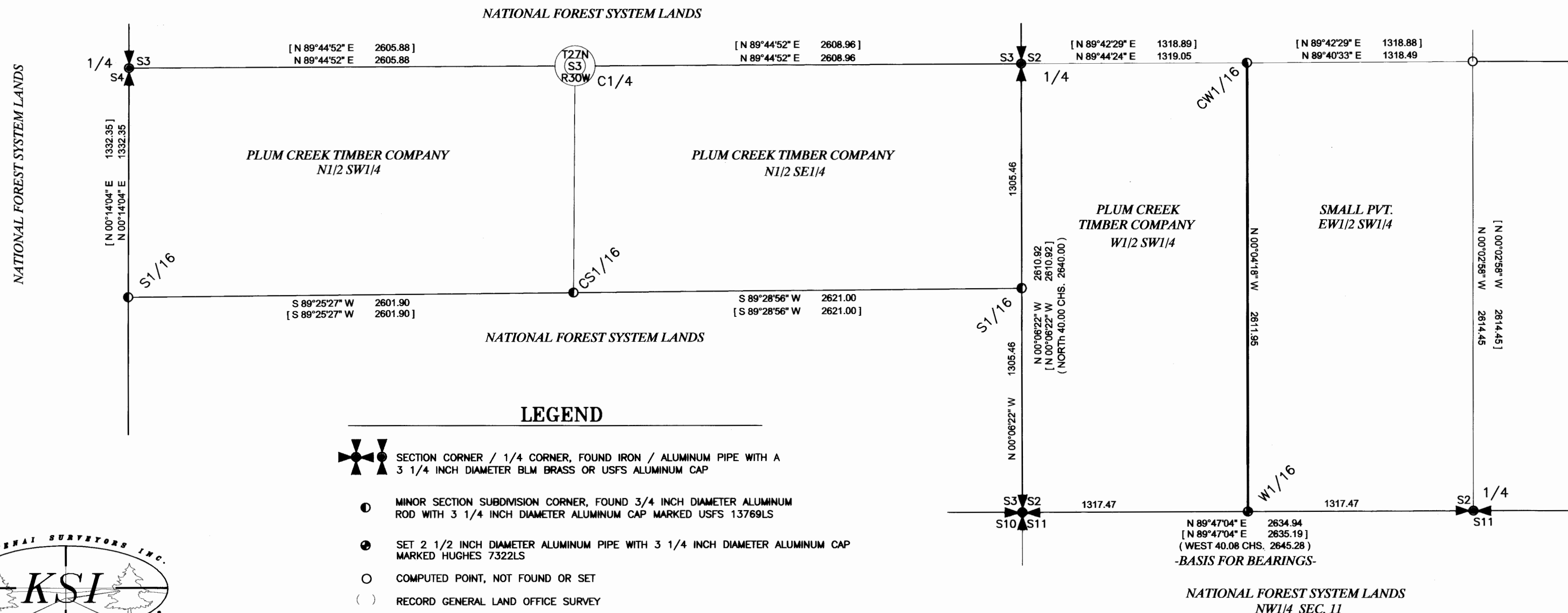
CLERK AND RECORDER'S CERTIFICATION

State of Montana, County of Lincoln, filed this 18th day

of Dec, 2008, A.D. at 1:53 o'clock

Tammy Olvera
Lincoln County Clerk & Recorder

Bill Blomdell
Deputy



LEGEND

- SECTION CORNER / 1/4 CORNER, FOUND IRON / ALUMINUM PIPE WITH A 3 1/4 INCH DIAMETER BLM BRASS OR USFS ALUMINUM CAP
- MINOR SECTION SUBDIVISION CORNER, FOUND 3/4 INCH DIAMETER ALUMINUM ROD WITH 3 1/4 INCH DIAMETER ALUMINUM CAP MARKED USFS 13769LS
- SET 2 1/2 INCH DIAMETER ALUMINUM PIPE WITH 3 1/4 INCH DIAMETER ALUMINUM CAP MARKED HUGHES 7322LS
- COMPUTED POINT, NOT FOUND OR SET
- RECORD GENERAL LAND OFFICE SURVEY
- RECORD COS No. 2994
- SECTION SUBDIVISION LINE
- PROPERTY BOUNDARY MARKED AND POSTED THIS SURVEY

GRAPHIC SCALE



(IN FEET)
1 inch = 500 ft.

CERTIFICATE OF SURVEY No. 3900

doc.#216073

