

# CERTIFICATE OF SURVEY

"Dependent Resurvey and Section Subdivision"  
NE1/4, SE1/4, SW1/4, SECTION 34 T.30 N., R.30 W., P.M.,MT.  
LINCOLN COUNTY, MONTANA  
FOR: PLUM CREEK TIMBER CO.      DATE: JULY 2008



PLUM CREEK TIMBER COMPANY

PLUM CREEK TIMBER COMPANY

( N89°52'E 40.00 chs. = 2640.00 )  
N89°05'08"W  
2638.12'

1/4 S27  
S34

S27 S26  
S34 S35

NATIONAL FOREST SYSTEM LANDS  
NE 1/4

S00°08'08"W  
2670.23'

N00°07'19"E  
2640.00'

( N00°02'W 40.00 chs. = 2640.00 )

PLUM CREEK TIMBER COMPANY

## LEGEND

- SECTION CORNER OR 1/4 CORNER, FOUND IRON OR ALUMINUM PIPE WITH A 3 1/4 INCH DIAMETER BLM BRASS OR ALUMINUM CAP
- SET 5/8 INCH DIAMETER REBAR WITH 3 1/4 INCH DIAMETER USFS ALUMINUM CAP MARKED HUGHES 7322LS
- ( ) RECORD PER GENERAL LAND OFFICE SURVEY
- SECTION SUBDIVISION LINE
- PROPERTY BOUNDARY MARKED AND POSTED THIS SURVEY

1/4 S33  
S34

N89°44'32"W  
2649.24'

N89°44'32"W  
2638.51'

S34 S35  
1/4

C 1/4

NATIONAL FOREST SYSTEM LANDS  
( N00°03'W 40.00 chs. = 2640.00 )  
N00°00'05"E  
2648.33'

PLUM CREEK TIMBER COMPANY  
SW 1/4

S00°08'08"W  
2633.16'

PLUM CREEK TIMBER COMPANY  
SE 1/4

N00°07'19"E  
2638.05'

( N00°02'W 40.00 chs. = 2640.00 )

T.30N. R.30W.  
T.29N. R.30W.

S33 S34

( N89°55'W 40.00 chs. = 2640.00 )  
S89°55'46"W  
2643.05'

1/4 S34

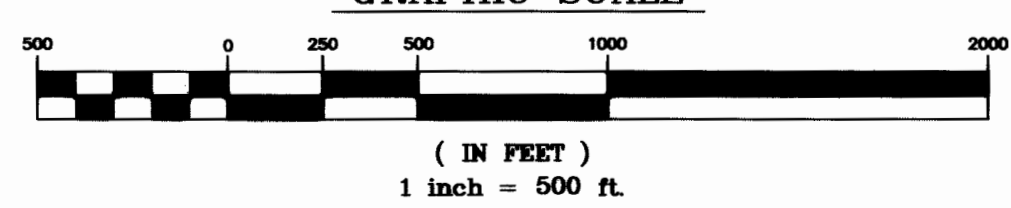
( N89°55'W 40.00 chs. = 2640.00 )  
S89°38'09"E  
2639.16'

S34 S35

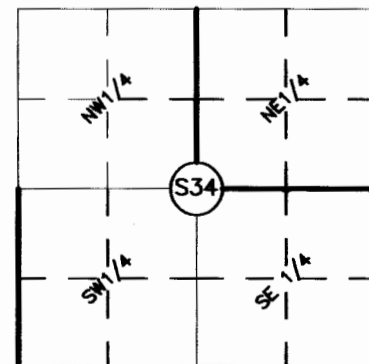


NATIONAL FOREST SYSTEM LANDS

## GRAPHIC SCALE



## VICINITY DIAGRAM



## PURPOSE OF SURVEY

The purpose is the retracement and dependent resurvey and section subdivision of record parcels of land; establishment of corners; perpetuate existing corners and mark property boundaries. Therefore no division of land is hereby created and is therefore exempt from review as a subdivision.

## HISTORY OF SURVEY

- 1898, GLO Survey of Township Boundary, Paul S. Bickel
- 1904, GLO Township Boundary Retracement, G. Fessenden and R. Lyman
- 1904, GLO Survey of Township Subdivision, G. Fessenden and R. Lyman
- 1965, BLM Remonumentation of Corners, D. Lindenberg

## METHOD OF SURVEY

A total station and data collector were used with closed traverse procedures, along with RTK GPS systems to tie the previously BLM remonumented original controlling corners by Mike Tester, July 2008.

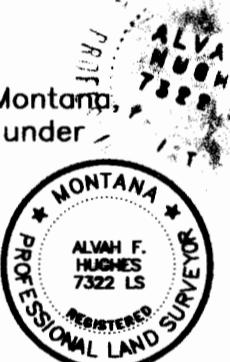
## BASIS OF BEARING

The basis for bearings for this survey is derived from a geodectic grade GPS system using the WGS 84 ellipsoid with local datum.

## LAND SURVEYOR'S CERTIFICATION

I hereby certify that I am a Registered Land Surveyor in the State of Montana, that the survey shown on this Certificate of Survey has been prepared under my supervision and in accordance with the Montana Code Annotated, Sections 76-3-101 through 76-3-625, and the Lincoln County Regulations adopted pursuant thereto.

*Alvah F. Hughes* 7322LS 08-18-2008  
Alvah F. Hughes, PLS, 7322LS Date



## EXAMINING LAND SURVEYOR'S CERTIFICATION

Examined this 14<sup>th</sup> day of AUGUST, 2008, A.D.

*Ronald A. Pearson*  
Ronald A. Pearson, PLS 9008LS Examining Land Surveyor

## CLERK AND RECORDER'S CERTIFICATION

State of Montana, County of Lincoln, filed this 29<sup>th</sup> day of August, 2008, A.D. at 9:00 o'clock A.M.  
*Tammy D. Law* by *Jeannie Linn*  
County Clerk Recorder Deputy

CERTIFICATE OF SURVEY No. 3872 Doc # 214039