

# CERTIFICATE OF SURVEY

## "RETRACEMENT"

SECTION 6, T.36N., R.26W., P.M., MT.

LINCOLN COUNTY, MONTANA

FOR: GEORGE P. SHEA, LIVING TRUST

DATE: MARCH 2008

### PURPOSE OF SURVEY

The purpose of this survey is the retracement of a record parcel of land; establishment of corners; perpetuate existing corners and mark property boundaries. Therefore no division of land is hereby created and is therefore exempt from review as a subdivision.

### METHOD OF SURVEY

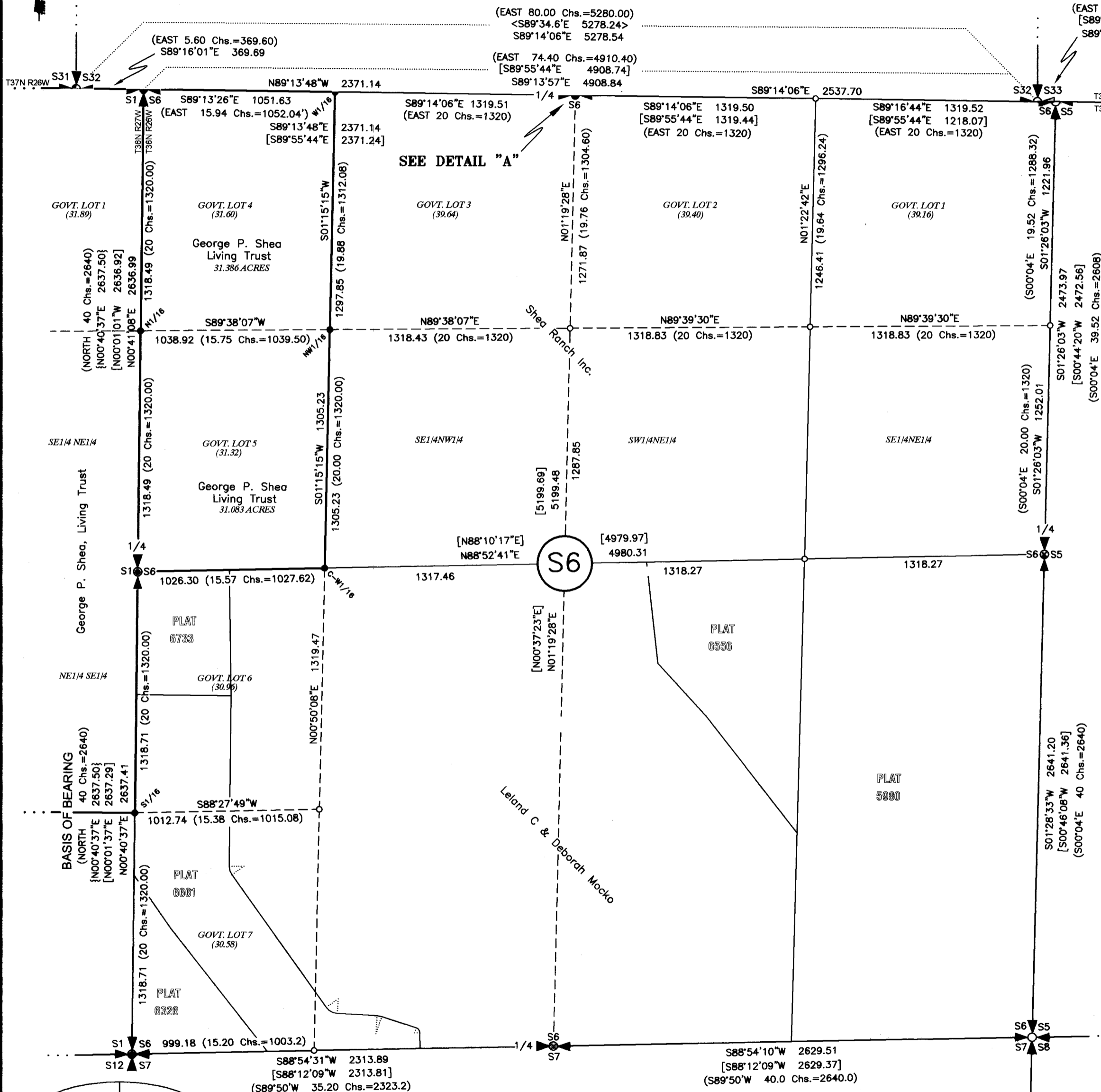
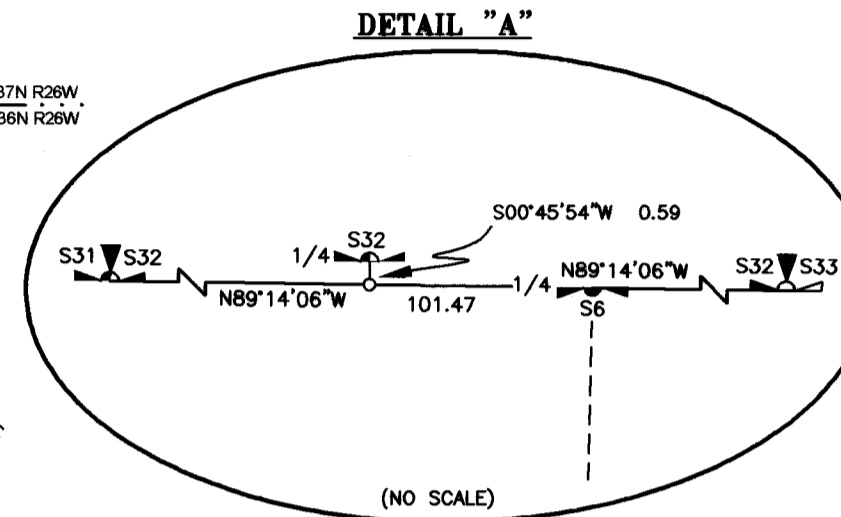
A total station with data collector and a RTK GPS system was used with closed traverse and radial procedures to tie the previously set controlling corners by Kelly Rooney, December, 2007

### BASIS OF BEARING

The basis of bearing for this survey is N00°40'37"E, as shown on Plat No. 327, between southwest Section corner, Section 6, a 2 inch diameter brass cap marked "2989ES", lying in the road asphalt surface and the west quarter corner of said Section 6, a 2 1/2 inch diameter iron pipe with 3 1/4 inch diameter brass cap marked "2989ES".

### HISTORY OF SURVEY

- 1893, Original GLO Plat, "9th Standard Parallel North", Cardell and Jaquith
- 1893, Original GLO Plat, "Subdivision and Meanders", Cardell and Jaquith
- 1977, COS No. 327, "Subdivision of Section 1, D. K. Marquardt, 2989ES
- 1997, Plat No. 5980, "Subdivision of Section 6, Kenneth Davis, 4975S
- 2001, Plat No. 6326, "Subdivision in Section 6, Alvah Hughes, 7322LS
- 2003, COS No. 3227, "Parcel in Section 32, Dayton Nelson, 3897S
- 2004, Plat No. 6556, "Subdivision in Section 6, Kenneth Davis, 4975S
- 2005, Plat No. 6661, "Subdivision in Section 6, Kenneth Davis, 4975S



LEGEND	
	FOUND SECTION CORNER, A 2 1/2 INCH DIAMETER IRON PIPE WITH 3 1/4 INCH DIAMETER BLM BRASS CAP
	FOUND CLOSING SECTION CORNER, A 2 1/2 INCH DIAMETER IRON PIPE WITH 3 1/4 INCH DIAMETER BLM BRASS CAP
	FOUND STANDARD SECTION CORNER, A 2 1/2 INCH DIAMETER IRON PIPE WITH 3 1/4 INCH DIAMETER BLM BRASS CAP
	FOUND STANDARD SECTION CORNER, A 5/8 INCH DIAMETER REBAR WITH PLASTIC CAP MARKED "NELSON, 3897S"
	FOUND QUARTER CORNER, A 5/8 INCH DIAMETER REBAR WITH PLASTIC CAP MARKED "NELSON, 3897S"
	FOUND CLOSING SECTION CORNER, AN ORIGINAL STONE MONUMENT, REMONUMENTED WITH A 2 1/2 INCH DIAMETER ALUMINUM PIPE WITH 3 1/4 INCH DIAMETER ALUMINUM CAP MARKED "HUGHES, 7322LS"
	FOUND SECTION CORNER, A 2 INCH DIAMETER BRASS CAP MARKED "2989ES" IN ROAD ASPHALT SURFACE
	FOUND QUARTER CORNER, A 2 1/2 INCH DIAMETER IRON PIPE WITH 3 1/4 INCH DIAMETER BRASS CAP MARKED "2989ES"
	FOUND QUARTER CORNER, A 2 1/2 INCH DIAMETER ALUMINUM PIPE WITH 3 1/4 INCH DIAMETER CAP MARKED "KED, 4975S"
	FOUND QUARTER CORNER, A 2 1/2 INCH DIAMETER ALUMINUM PIPE WITH 3 1/4 INCH DIAMETER CAP MARKED "KED, 4975S"
	QUARTER CORNER, SET A 2 1/2 INCH DIAMETER ALUMINUM PIPE WITH 3 1/4 INCH DIAMETER CAP MARKED "HUGHES, 7322LS"
	SUBDIVISION CORNER COMMON TO ONE SECTION, SET A 5/8 INCH DIAMETER REBAR WITH 3 1/4 INCH DIAMETER ALUMINUM CAP MARKED "HUGHES, 7322LS"
	ALIQUOT PART CORNER, SET A 5/8 INCH DIAMETER REBAR WITH 3 1/4 INCH DIAMETER ALUMINUM CAP MARKED "HUGHES, 7322LS"
	UNMARKED COMPUTED POINT
	ORIGINAL GLO RECORD
	COS 327 RECORD
	COS 3227 RECORD
	PLAT 5980 RECORD
	PROPERTY LINE
	SECTION/ADJOINING PROPERTY LINES
	LOT/SUBDIVISION LINE
	DIMENSION LINE

### LAND SURVEYOR'S CERTIFICATION

I hereby certify that I am a Registered Land Surveyor in the State of Montana, that the survey shown on this Certificate of Survey has been prepared under my supervision and in accordance with the Montana Code Annotated, Sections 76-3-101 through 76-3-625, and the Lincoln County Regulations adopted pursuant thereto.

*Alvah F. Hughes, 7322LS* 03-13-08  
Alvah F. Hughes, PLS, 7322LS Date



### LEGAL DESCRIPTION: "SHEA LIVING TRUST"

An aliquot part tract of land, lying northeasterly from Eureka, Montana, Lincoln County and more particularly described as: Government Lot 4, being 31.386 acres; Government Lot 5, being 31.063 acres, Section 6, T.36N., R.26W., P.M., MT. Subject to and together with all appurtenant easements of record.

### EXAMINING LAND SURVEYOR'S CERTIFICATION

Examined this 20 day of March, 2008 A.D.

*Ronald A. Pearson*  
Ronald A. Pearson, PLS, 9008LS Examining Land Surveyor

### CLERK AND RECORDER'S CERTIFICATION

State of Montana, County of Lincoln, filed this 27 day

of March, 2008 at 9:35 o'clock A.M.

*Jimmy D. Lewis* by *Jessamine Adams*  
Lincoln County Clerk & Recorder Deputy

CERTIFICATE OF SURVEY NO. 3814 DE-210154

