

CERTIFICATE OF SURVEY

" RETRACEMENT "

COMET PLACER M.S. 10377

S1/2 SEC. 18, N1/2 SEC. 19, T.28 N., R.30 W., P.M.,MT.

LINCOLN COUNTY, MONTANA

FOR: PLUM CREEK TIMBER CO. DATE: AUGUST 2007



PURPOSE OF SURVEY

The purpose of this survey is the Retracement of a record parcel of land; the maintenance of original corners, and marking and posting record property lines. Therefore, no division of land is hereby created and is exempt from review as a subdivision.

HISTORY OF SURVEYS

1903, GLO Retracement Surveys of Township Boundaries and Subdivisions, Fred I. Hubbard
1922, M.S. No.10377, Comet, Hogum, Deadwood Placers by W. Pennington.
1964, BLM Remonumentation of Original Corners, Lindenberg, Damm, et. al.

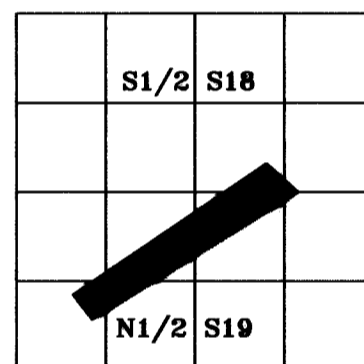
LEGAL DESCRIPTION

An irregular tract of land, known as the Comet Placer, MS 10377, lying southeasterly from Libby, Montana, Lincoln County, partially within the S 1/2, Section 18 and the N 1/2, Section 19, T.28N., R.30W., P.M.,MT., containing 54.74 acres and more particularly described as follows:
Commencing at the West one-quarter corner said Section 19, a 3 1/4 inch diameter B.L.M. brass cap marked 1964; Thence N41°56'42"E, 957.30 feet to a set 3 1/4 inch diameter U.S.F.S aluminum capped monument marked C1-MS 10377, being the southwesterly corner of said Comet Placer and the TRUE POINT OF BEGINNING; Thence N37°51'42"W, 519.39 feet to a set 3 1/4 inch U.S.F.S aluminum capped monument marked C2-MS 10377, being the northwesterly corner of said Comet Placer; Thence N55°49'36"E, 3884.31 feet to a set 3 1/4 inch diameter U.S.F.S aluminum capped monument marked C3-MS 10377, being the northeasterly corner of said Comet Placer; Thence S47°44'29"E, 712.51 feet to an unmarked computed corner C4-MS 10377, being the southeasterly corner said Comet Placer; Thence S58°18'39"W, 70.00 feet to a set 3 1/4 inch diameter U.S.F.S aluminum cap set as witness corner to said corner C4, Comet Placer; Thence S58°18'39"W, 3951.83 feet to a set 3 1/4 inch diameter U.S.F.S aluminum capped monument and said corner C1-MS 10377, and the TRUE POINT OF BEGINNING.

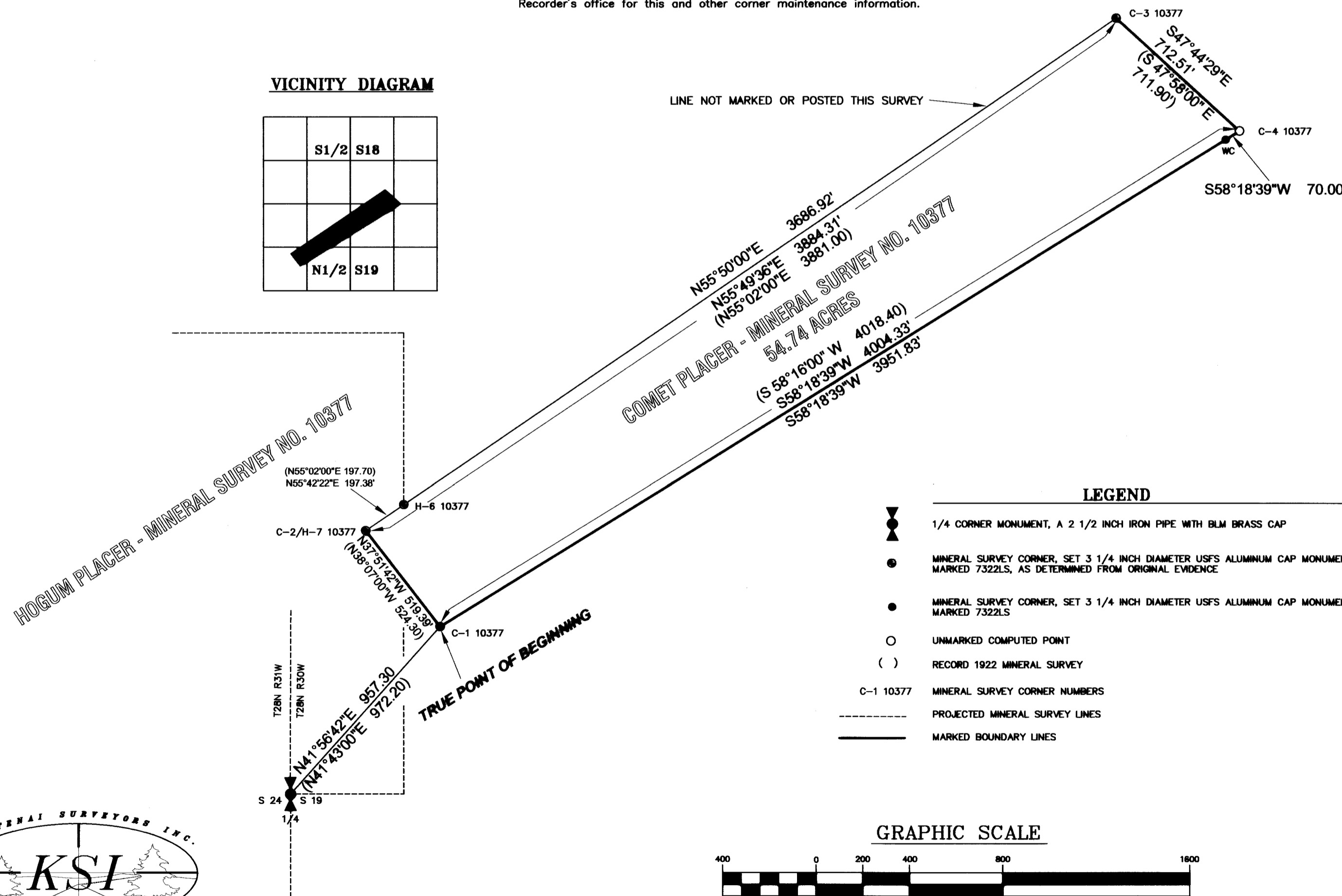
SURVEYORS NOTES

Corner C-4 was considered a lost corner as its position is covered by an earthen slide and the proximity to the main channel of Libby Creek. Therefore, a witness corner was set, a 3 1/4 inch diameter USFS aluminum capped monument, as shown hereon. Refer to Certified Corner Recordation forms filed with the Lincoln County Clerk and Recorder's office for this and other corner maintenance information.

VICINITY DIAGRAM



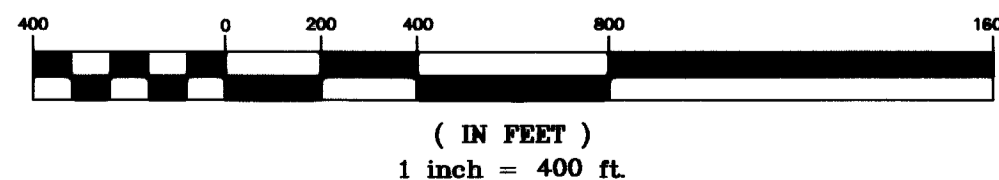
LINE NOT MARKED OR POSTED THIS SURVEY



LEGEND

- 1/4 CORNER MONUMENT, A 2 1/2 INCH IRON PIPE WITH BLM BRASS CAP
- MINERAL SURVEY CORNER, SET 3 1/4 INCH DIAMETER USFS ALUMINUM CAP MONUMENT MARKED 7322LS, AS DETERMINED FROM ORIGINAL EVIDENCE
- MINERAL SURVEY CORNER, SET 3 1/4 INCH DIAMETER USFS ALUMINUM CAP MONUMENT MARKED 7322LS
- UNMARKED COMPUTED POINT
- RECORD 1922 MINERAL SURVEY
- C-1 10377 MINERAL SURVEY CORNER NUMBERS
- PROJECTED MINERAL SURVEY LINES
- MARKED BOUNDARY LINES

GRAPHIC SCALE



METHOD OF SURVEY

A total station, data collector and a Trimble R8 GPS GNSS system were used with closed traverse procedures and RTK techniques to tie the previously set controlling corners by Kelly Rooney and Levi Powell during July, 2007.

BASIS OF BEARING

The basis of bearings for this survey is derived from a geodetic grade GPS system using the WGS 84 ellipsoid with a local coordinate datum.

LAND SURVEYOR'S CERTIFICATION

I hereby certify that I am a Registered Land Surveyor in the State of Montana, that the survey shown on this Certificate of Survey has been prepared under my supervision and in accordance with the Montana Code Annotated, Sections 76-3-101 through 76-3-625, and the Lincoln County Regulations adopted pursuant thereto.

Avah F. Hughes, PLS, 7822LS Date *8/2/07*



EXAMINING LAND SURVEYOR'S CERTIFICATION

Approved this *10* day of *Jan* 200*8* A.D.

Andrew P. Bank Examining Land Surveyor, PLS, 14731LS

CLERK AND RECORDER'S CERTIFICATION

State of Montana, County of Lincoln, filed this *23rd* day of *January* 200*8* A.D. at *1:35* o'clock *p.m.*
Tommy D. Law by *Francine Burns*
Lincoln County Clerk & Recorder Deputy

CERTIFICATE OF SURVEY No. *3776* *Doc 20829*

