

# CERTIFICATE OF SURVEY

" RETRACEMENT "

N1/2, SECTION 29, T.30 N., R.29 W., P.M.,MT.

LINCOLN COUNTY, MONTANA

FOR: PLUM CREEK TIMBER Co. DATE: AUGUST 2007

PEOPLES CREEK

N  
O  
R  
T  
H

PLUM CREEK TIMBER COMPANY

PLUM CREEK TIMBER COMPANY

NATIONAL FOREST SYSTEM LANDS

(N89° 49' 00"W 40.00 chs./2640.00')  
N89°21'51"E 2636.83'

(N 89°49'W 40.00 Chs./2640.00')  
N89°55'22"W 2647.40'

S19  
S20  
S30  
S29

S20  
S29  
1/4

S20  
S21  
S29  
S28

NW 1/4

NE 1/4

SECTION 29

PLUM CREEK TIMBER COMPANY

## LEGEND



SECTION CORNER, FOUND IRON PIPE WITH 3 1/4 INCH DIAMETER BLM BRASS CAP



1/4 CORNER, FOUND IRON PIPE WITH 3 1/4 INCH DIAMETER BLM BRASS CAP



RECORD PER 1903 GENERAL LAND OFFICE

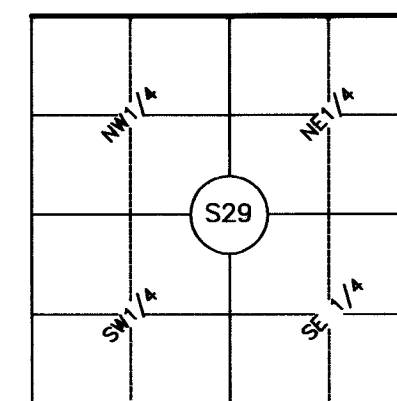
----- SECTION SUBDIVISION LINE

===== PROPERTY LINE MARKED AND POSTED THIS SURVEY

----- EXTERIOR SECTION LINE

NFSL NATIONAL FOREST SYSTEM LANDS

## VICINITY DIAGRAM



## GRAPHIC SCALE



( IN FEET )

1 inch = 400 ft.

## PURPOSE OF SURVEY

The purpose is the resurvey of record parcels of land; establish corners, and mark property boundaries. Therefore no division of land is hereby created and is exempt from review as a subdivision.

## HISTORY OF SURVEY

1894, GLO Survey of Township Boundary, Paul S. A. Bickel

1903, GLO Survey of Township Subdivision, G. Fessenden, R. Lyman

1965, BLM Remonumentation of Corners, D. Lindenberg et al

## LAND SURVEYOR'S NOTE

Refer to Certified Corner Recordations forms filed with the Lincoln County Clerk and Recorder's office for specific corner information.

## METHOD OF SURVEY

A total station and GPS system with data collector were used with closed traverse procedures to tie the previously set controlling corners by Levi Powell, July, 2007.

## BASIS OF BEARING

The basis of bearing for this survey is derived from a geodetic grade GPS system using the WGS 84 ellipsoid with a local coordinate datum.

## LAND SURVEYOR'S CERTIFICATION

I hereby certify that I am a Registered Land Surveyor in the State of Montana, that the survey shown on this Certificate of Survey has been prepared under my supervision and in accordance with the Montana Code Annotated, Sections 76-3-101 through 76-3-625, and the Lincoln County Regulations adopted pursuant thereto.

Alvah F. Hughes, 7322LS 01/22/08  
Alvah F. Hughes, PLS, 7322LS Date



## EXAMINING LAND SURVEYOR'S CERTIFICATION

Approved this 18 day of Jan, 2008, A.D.

Andrew Belski, PLS 14731LS

Examining Land Surveyor

## CLERK AND RECORDER'S CERTIFICATION

State of Montana, County of Lincoln, filed this 23<sup>rd</sup> day

of January, 2008, A.D. at 1:30 o'clock P.M.

Tammy D. Law by Dannie Dennis  
Lincoln County Clerk & Recorder Deputy

CERTIFICATE OF SURVEY No. 3775 Doc # 208628

