

By: MONTANA MAPPING ASSOCIATES, Inc.
Surveys, Mapping & Geodetic Consulting
1405 Hwy 2 West
Kalispell, Mont. 59901
Phone: (406) 752-3539

Darren R. Breckenridge, P.L.S.

CERTIFICATE OF SURVEY

W 1/2 SECTION 9 AND W 1/2 SECTION 16, T. 30 N., R. 29 W.

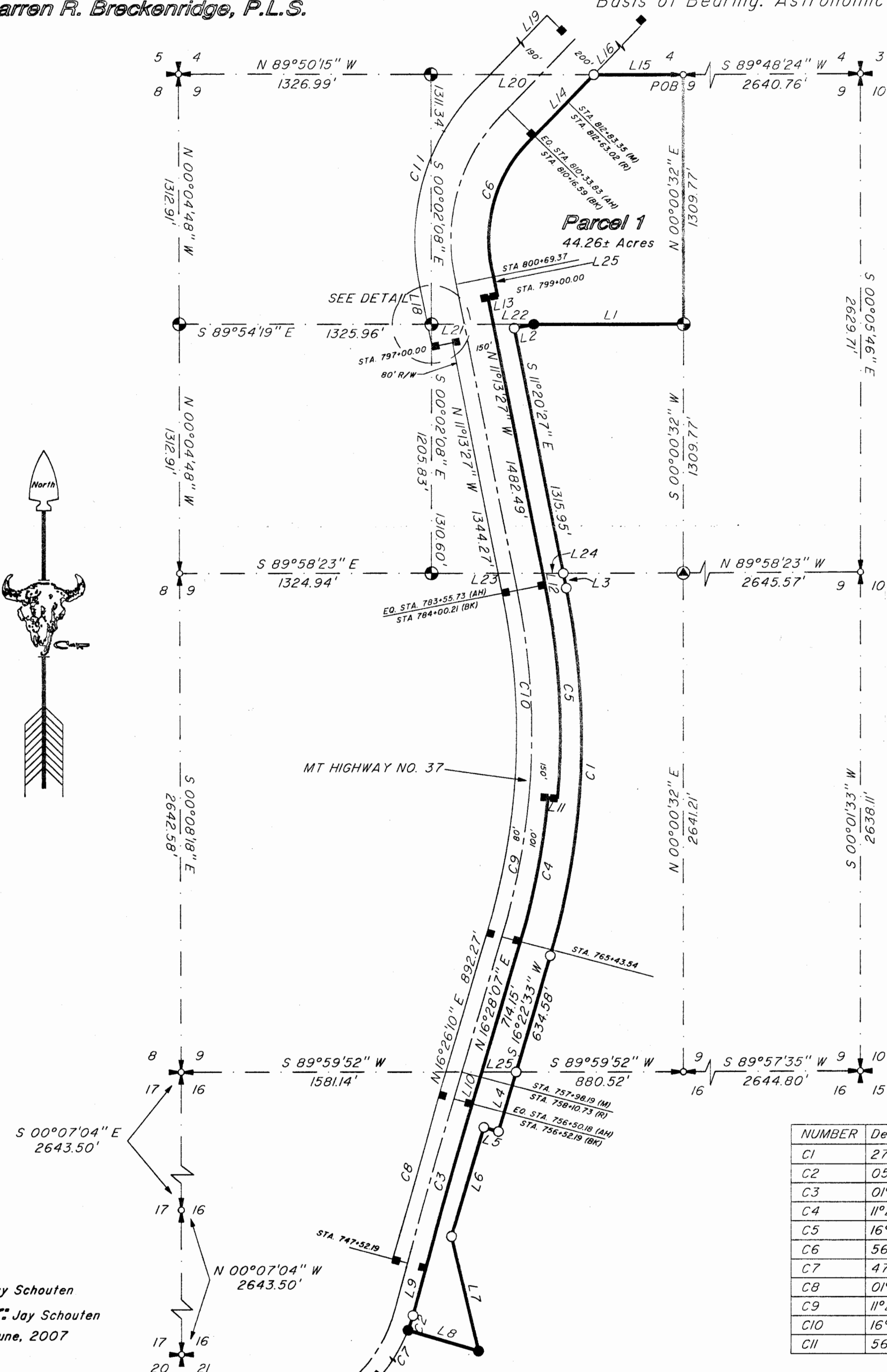
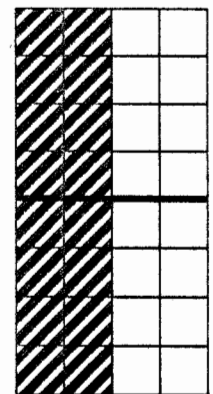
PRINCIPAL MERIDIAN, LINCOLN COUNTY, MONTANA

Basis of Bearing: Astronomic Observation

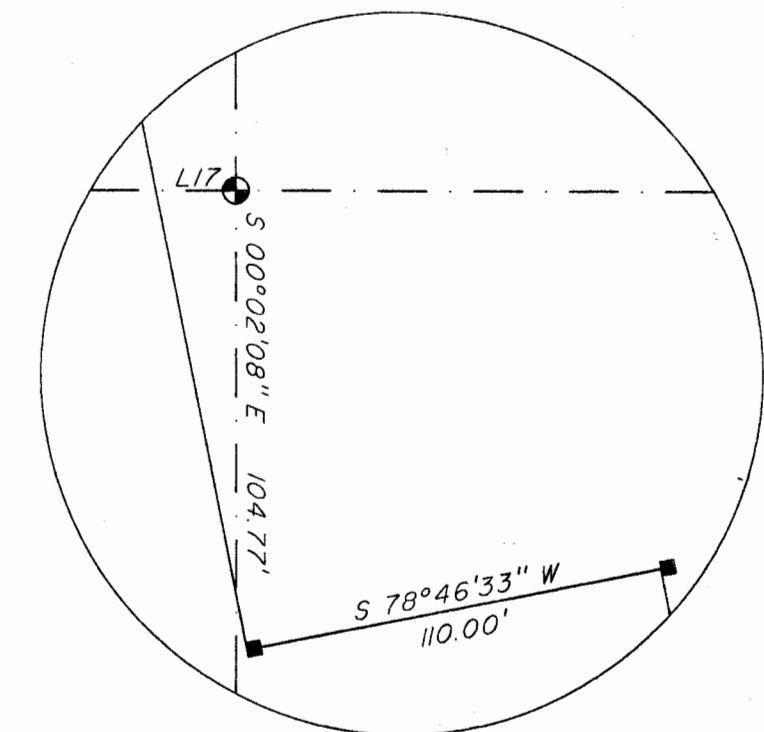
PURPOSE: Retracement



Scale 1" = 500'



DETAIL
NOT TO SCALE

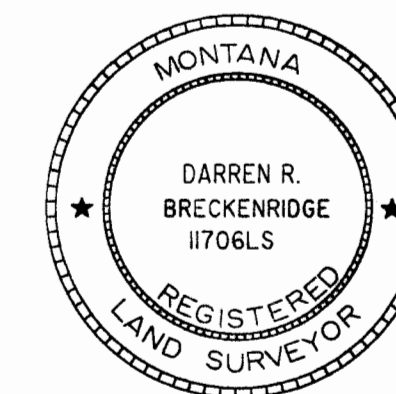


Line Table

NUMBER	DIRECTION	DISTANCE
L1	N 89°54'19" W	788.47'
L2	S 78°39'33" W	104.36'
L3	S 11°20'27" E	79.94'
L4	S 16°23'15" W	328.64'
L5	N 73°36'45" W	80.00'
L6	S 16°23'15" W	600.00'
L7	S 13°17'47" E	620.25'
L8	N 73°35'20" W	387.59'
L9	N 15°00'27" E	259.07'
L10	N 16°28'07" E	177.60'
L11	S 84°22'12" E	50.78'
L12	S 11°13'27" E	61.78'
L13	N 78°46'33" E	50.00'
L14	N 44°26'13" E	449.89'
L15	S 89°50'15" E	470.59'
L16	N 44°26'13" E	913.06'
L18	S 11°13'27" E	374.12'
L19	N 44°26'13" E	1409.26'
L20	S 89°50'15" E	856.40'
L21	S 89°54'19" E	325.86'
L22	S 89°54'19" E	211.63'
L23	S 89°58'23" E	585.23'
L24	S 89°58'23" E	107.90'
L25	N 11°13'27" W	169.41'

LEGEND

- SECTION CORNER 3" BLM BRASS CAP
- 1/4 SECTION CORNER 3" BLM BRASS CAP
- CENTER SECTION CORNER SAME AS SET
- 1/16 SECTION CORNER SAME AS SET
- SET 5/8" X 24" REBAR WITH CAP
STAMPED BRECKENRIDGE 11706LS
- FOUND 4x4 CONCRETE R/W MONUMENT
- FOUND 3" ALUM. CAP BY THE ARMY
CORPS OF ENGINEERS



CERTIFICATE OF SURVEYOR

Darren R. Breckenridge 10/26/07
REGISTRATION NUMBER 11706LS

APPROVED 6 Nov 2007

EXAMINING LAND SURVEYOR REG. NO. 14731 PLS

STATE OF MONTANA
COUNTY OF LINCOLN

FILED THIS 8 DAY OF Nov 2007 A.D.
AT 2:00 O'CLOCK P.M.

Tammy D. Lauer
CLERK AND RECORDER

BY: *Jeannie D. Danner*

INSTRUMENT RECORD NUMBER 207348

SHEET 1 OF 2 SHEETS
CERTIFICATE OF SURVEY NO. 3741

For: Jay Schouten
Owner: Jay Schouten
Date: June, 2007

Curve Table

NUMBER	Delta	R'	L'	Radial Bearing In	Radial Bearing Out
C1	27°43'00"	4083.58	1975.42	S 78°39'33" W	S 73°37'27" E
C2	05°14'29"	899.32	82.27	N 68°28'11" W	S 73°42'40" E
C3	01°37'50"	31536.97	897.50	S 75°08'45" E	N 73°30'55" W
C4	11°22'20"	3917.00	777.45	N 73°24'32" W	S 84°46'52" E
C5	16°29'04"	3978.96	1144.78	N 85°01'56" W	N 78°29'00" E
C6	56°49'50"	742.59	736.56	N 80°19'29" E	N 42°50'41" W
C7	47°23'42"	899.32	743.92	N 21°04'29" W	S 68°28'11" E
C8	01°37'49"	31716.97	902.47	S 75°08'44" E	N 73°30'55" W
C9	11°22'16"	3737.00	741.65	N 73°24'26" W	S 84°46'42" E
C10	16°28'54"	3748.96	1078.43	N 85°02'06" W	N 78°29'00" E
C11	56°36'29"	1132.59	1118.99	N 80°01'48" E	N 43°21'43" W

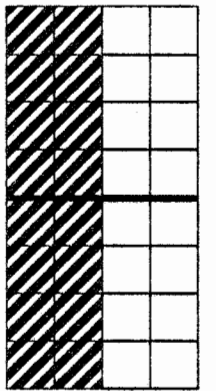
By: MONTANA MAPPING ASSOCIATES, Inc.
Surveys, Mapping & Geodetic Consulting
1405 Hwy 2 West
Kalispell, Mont. 59901
Phone: (406) 752-3539

Darren R. Breckenridge, P.L.S.

CERTIFICATE OF SURVEY

W 1/2 SECTION 9 AND W 1/2 SECTION 16, T. 30 N., R. 29 W.
PRINCIPAL MERIDIAN, LINCOLN COUNTY, MONTANA

PURPOSE: Retracement



LEGAL DESCRIPTION

Parcel 1

A tract of land situated, lying and being in the W 1/2 of Section 9 and the W 1/2 of Section 16, Township 30 North, Range 29 West, Principal Meridian, Lincoln County, Montana, more particularly described as follows:

Beginning at the North 1/4 corner of Section 9 being a 3" brass cap; thence along the north-south centerline of Section 9 S 00°00'32" W a distance of 1309.77' to the center-north 1/16 corner of Section 9 being a 5/8" rebar; thence along the north 1/16 line of Section 9 N 89°54'19" W a distance of 788.47' to a 5/8" rebar; thence S 78°39'33" W a distance of 104.36' to a 3" aluminum cap; thence S 11°20'27" E a distance of 1315.95' to a point on the east-west centerline of Section 9 being a 5/8" rebar; thence continuing S 11°20'27" E a distance of 79.94' to a 5/8" rebar; thence along a 4083.58' radius curve to the right whose radius bears S 78°39'33" W through a central angle of 27°43'00" an arc distance of 1975.42' to a point; thence S 16°22'33" W a distance of 634.58' to a point on the south section line of Section 9 being a 5/8" rebar; thence S 16°23'15" W a distance of 328.64' to a 5/8" rebar; thence N 73°36'45" W a distance of 80.00' to a 5/8" rebar; thence S 16°23'15" W a distance of 600.00' to a 5/8" rebar; thence S 13°17'47" E a distance of 620.25' to a 5/8" rebar; thence N 73°35'20" W a distance of 387.59' to a point on the easterly boundary of Montana Highway No. 37 being a 5/8" rebar; thence along said boundary the following twelve courses: 1) along a 899.32' radius curve to the left whose radius bears N 68°28'11" W through a central angle of 05°14'29" an arc distance of 82.27' to a 5/8" rebar; 2) N 15°00'27" E a distance of 259.07' to a 4" X 4" concrete right-of-way monument; 3) along a 31536.97' radius curve to the right whose radius bears S 75°08'45" E through a central angle of 01°37'50" an arc distance of 897.50' to a 4" X 4" concrete right-of-way monument; 4) N 16°28'07" E a distance of 891.75' to a 4" X 4" concrete right-of-way monument; 5) along a 3917.00' radius curve to the left whose radius bears N 73°24'32" W through a central angle of 11°22'20" an arc distance of 777.46' to a 4" X 4" concrete right-of-way monument; 6) S 84°22'12" E a distance of 50.78' to a 4" X 4" concrete right-of-way monument; 7) along a 3976.96' radius curve to the left whose radius bears N 85°01'56" W through a central angle of 16°29'04" an arc distance of 1144.78' to a 4" X 4" concrete right-of-way monument; 8) N 11°13'27" W a distance of 1544.27' to a 4" X 4" concrete right-of-way monument; 9) N 78°46'33" E a distance of 50.00' to a 4" X 4" concrete right-of-way monument; 10) N 11°13'27" W a distance of 169.41' to a point; 11) along a 742.59' radius curve to the right whose radius bears N 80°19'29" E through a central angle of 56°49'50" an arc distance of 736.56' to a 4" X 4" concrete right-of-way monument; 12) N 44°26'13" E a distance of 449.89' to a 4" X 4" concrete right-of-way monument; thence S 89°50'15" E a distance of 470.59' to the Point of Beginning. Containing 44.26 acres more or less. Together with and subject to all appurtenant easements of record.

Surveyor's Note

The legal description from the United States to Jay Schouten called for two lines - the easterly boundary being the proposed highway right-of-way and the westerly boundary being the as built highway right-of-way. I found two different sets of plans of the proposed highway. One set called for and gave bearing and distance to a "Project Boundary". It was this "Project Boundary" that I used when the original deed called for the right-of-way. Using this interpretation also coincided with found monumentation from the Army Corps of Engineers.

For: Jay Schouten

Owner: Jay Schouten

Date: June, 2007

File Name: Z:\SURVEYS\SCHOUTEN, JAY\COS\LC_RTC\DWG\RETRACE2.DWG

SHEET 2 OF 2 SHEETS

CERTIFICATE OF SURVEY NO. 3741

Doc # 307348