

# CERTIFICATE OF SURVEY

## " RETRACEMENT "

NW1/4 SE1/4, SW1/4 NE1/4, E1/2 NW1/4 NE1/4, SEC. 25, T.30 N., R.31 W., P.M., MT.

LINCOLN COUNTY, MONTANA

FOR: PLUM CREEK TIMBER CO.

DATE: MAY 2007

### PURPOSE OF SURVEY

The purpose of this survey is the Retracement of a record parcel of land; the remonumentation or re-establishment of original corners, and marking and posting record property lines. Therefore, no division of land is hereby created and is exempt from review as a subdivision.

### HISTORY OF SURVEY

1893, GLO Survey of Township Boundaries, J. Keel and A. Jaqueth  
1893, GLO Survey of Subdivisions, D. Mumbrue  
1966-1981, BLM Remonumentation of Original Corners, James Pritchard, et. al.  
1974, BLM Dependent Resurvey and Section Subdivision, Shirley Hjellum, et. al.

### METHOD OF SURVEY

A total station, data collector and a Trimble R8 GPS GNSS system were used with closed traverse procedures and RTK techniques to tie the previously set controlling corners by Kelly Rooney, March, 2007.

### BASIS OF BEARING

The basis of bearings for this survey is derived from a geodetic grade GPS system using the WGS 84 ellipsoid with a local coordinate datum.

### LAND SURVEYOR'S CERTIFICATION

I hereby certify that I am a Registered Land Surveyor in the State of Montana, that the survey shown on this Certificate of Survey has been prepared under my supervision and in accordance with the Montana Code Annotated, Sections 76-3-101 through 76-3-625, and the Lincoln County Regulations adopted pursuant thereto.

*Alvah F. Hughes*, 08/07/2007  
Alvah F. Hughes, PLS, 7322LS Date



### EXAMINING LAND SURVEYOR'S CERTIFICATION

Approved this 27 day of July, 2007, A.D.

*Andrew P. Beliski*  
Andrew P. Beliski, Examining Land Surveyor, PLS, 14731LS



### CLERK AND RECORDER'S CERTIFICATION

State of Montana, County of Lincoln, filed this 29<sup>th</sup> day  
of August, 2007, A.D. at 8:50 o'clock p.m.  
*Johnny D. Lamm* by *Erinn D. Lamm*  
Lincoln County Clerk & Recorder Deputy

CERTIFICATE OF SURVEY No. 3709

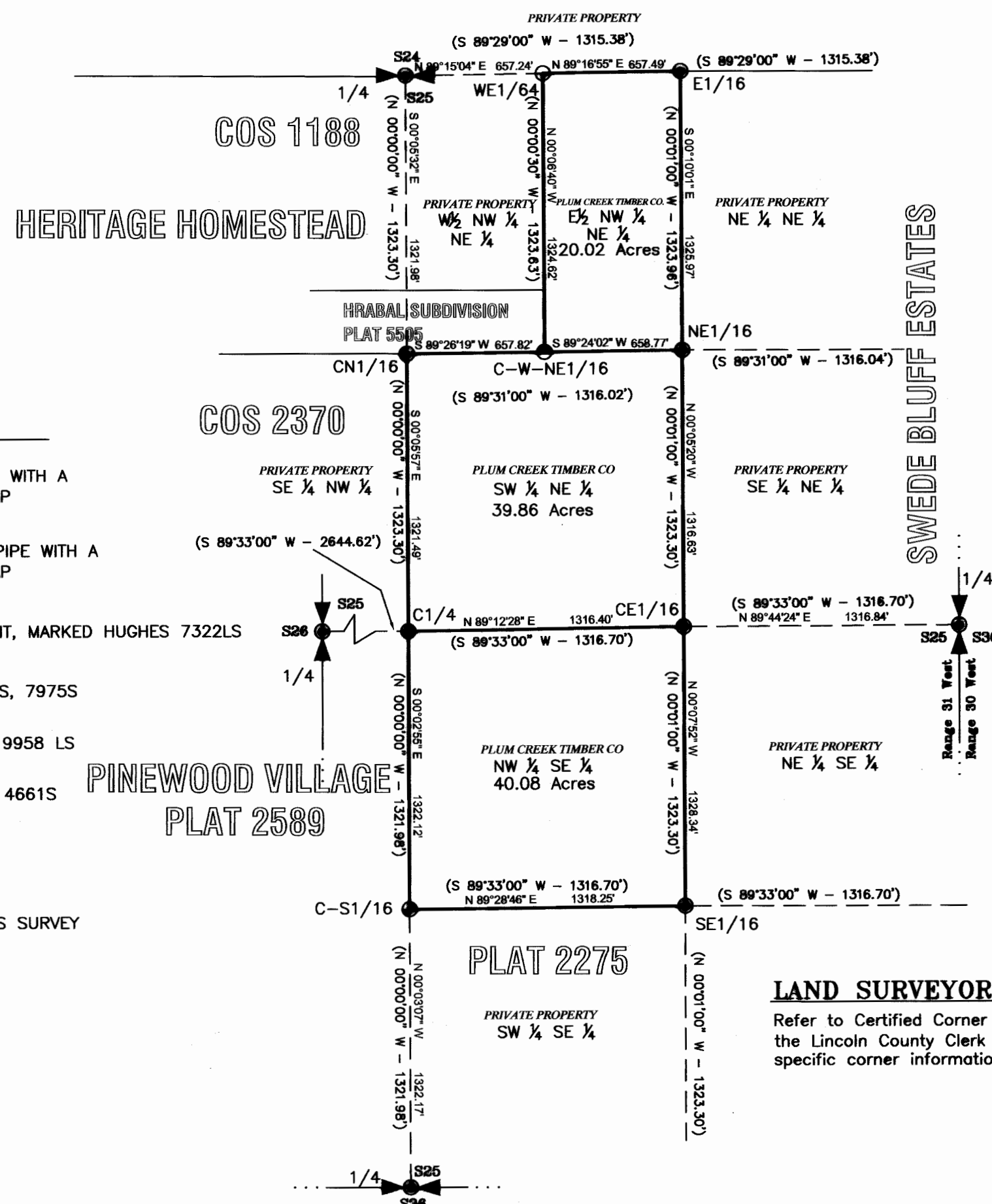
Doc # 205661



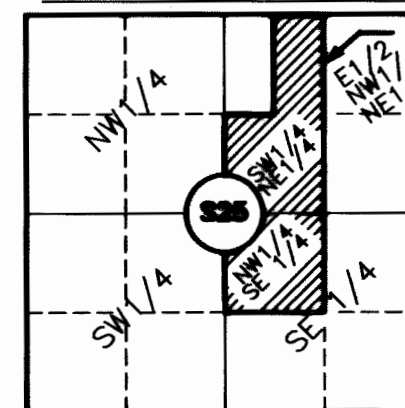
### LEGEND

- FOUND 1/4 CORNER - AN IRON OR ALUMINUM PIPE WITH A 3 1/4 INCH DIAMETER BLM BRASS OR ALUMINUM CAP
- FOUND 1/16TH CORNER - AN IRON OR ALUMINUM PIPE WITH A 3 1/4 INCH DIAMETER BLM BRASS OR ALUMINUM CAP
- SET 3 1/4 INCH DIAMETER ALUMINUM CAP MONUMENT, MARKED HUGHES 7322LS
- FOUND A 5/8 INCH DIAMETER REBAR, MARKED SANDS, 7975S
- FOUND A 5/8 INCH DIAMETER REBAR, MARKED JRS, 9958 LS
- FOUND A 5/8 INCH DIAMETER REBAR, MARKED JHN, 4661S
- ( ) RECORD PER 1974 BLM DEPENDENT RESURVEY

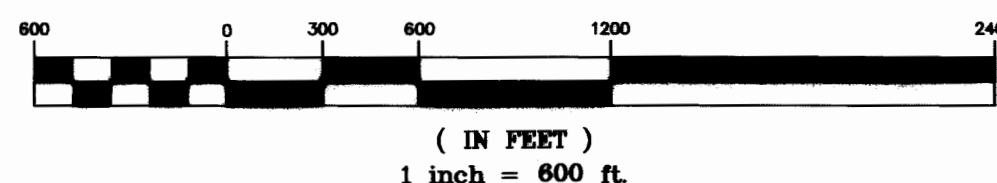
- SECTION SUBDIVISION LINE
- PROPERTY BOUNDARY MARKED AND POSTED THIS SURVEY
- EXTERIOR SECTION LINE



### VICINITY DIAGRAM



### GRAPHIC SCALE



### LAND SURVEYOR'S NOTE

Refer to Certified Corner Recordations forms filed with the Lincoln County Clerk and Recorder's office for specific corner information.