

CERTIFICATE OF SURVEY

" RETRACEMENT "

NE 1/4, NW 1/4 SE 1/4, SEC. 31 T.30 N., R.29 W., P.M., MT.

LINCOLN COUNTY, MONTANA

FOR: PLUM CREEK TIMBER CO. DATE: MAY 2007

PURPOSE OF SURVEY

The purpose of this survey is the Retracement of record parcels of land; the maintenance of original corners, monumentation of 1/8th subdivision corners and marking and posting record property lines. Therefore, no division of land is hereby created and is exempt from review as a subdivision.

HISTORY OF SURVEY

1903, GLO Retracement Surveys of Township Boundaries and Subdivisions, Fred I. Hubbard 1959-1964, BLM Remonumentation of Original Corners, Pitman, Larimer, et. al. 1965-1968, BLM Remonumentation of Original Corners, Lindenberg, Damm, et. al.

LEGAL DESCRIPTION

Plum Creek Timber Company: NE 1/4; NW 1/4 SE 1/4
National Forest System Lands: NW 1/4; SW 1/4; NE 1/4 SE 1/4; SE 1/4 SE 1/4; SW 1/4 SE 1/4

METHOD OF SURVEY

A total station, data collector and a Trimble R8 GPS GNSS system were used with closed traverse procedures and RTK techniques to tie the previously set controlling corners by Kelly Rooney, May, 2007.

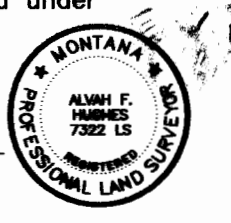
BASIS OF BEARING

The basis of bearings for this survey is derived from a geodetic grade GPS system using the WGS 84 ellipsoid with a local coordinate datum.

LAND SURVEYOR'S CERTIFICATION

I hereby certify that I am a Registered Land Surveyor in the State of Montana, that the survey shown on this Certificate of Survey has been prepared under my supervision and in accordance with the Montana Code Annotated, Sections 76-3-101 through 76-3-625, and the Lincoln County Regulations adopted pursuant thereto.

Alvah F. Hughes, 08/07/07
Alvah F. Hughes, PLS, 7322LS Date



EXAMINING LAND SURVEYOR'S CERTIFICATION

Approved this 22 day of July 2007, A.D.

Andrew P. Belzki
Andrew P. Belzki - Examining Land Surveyor, PLS, 14731LS



CLERK AND RECORDER'S CERTIFICATION

State of Montana, County of Lincoln, filed this 29 day

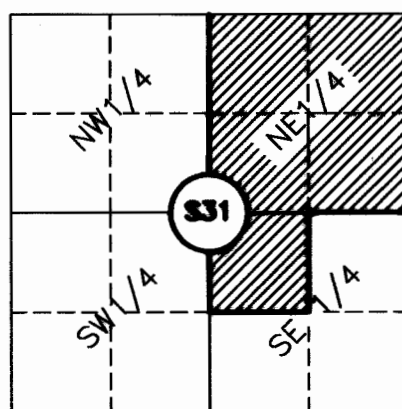
of August 2007, A.D. at 8:45 o'clock A.M.

Tommy D. Lauer by *Jeanne Stearns*
Lincoln County Clerk & Recorder Deputy

CERTIFICATE OF SURVEY No. 3708

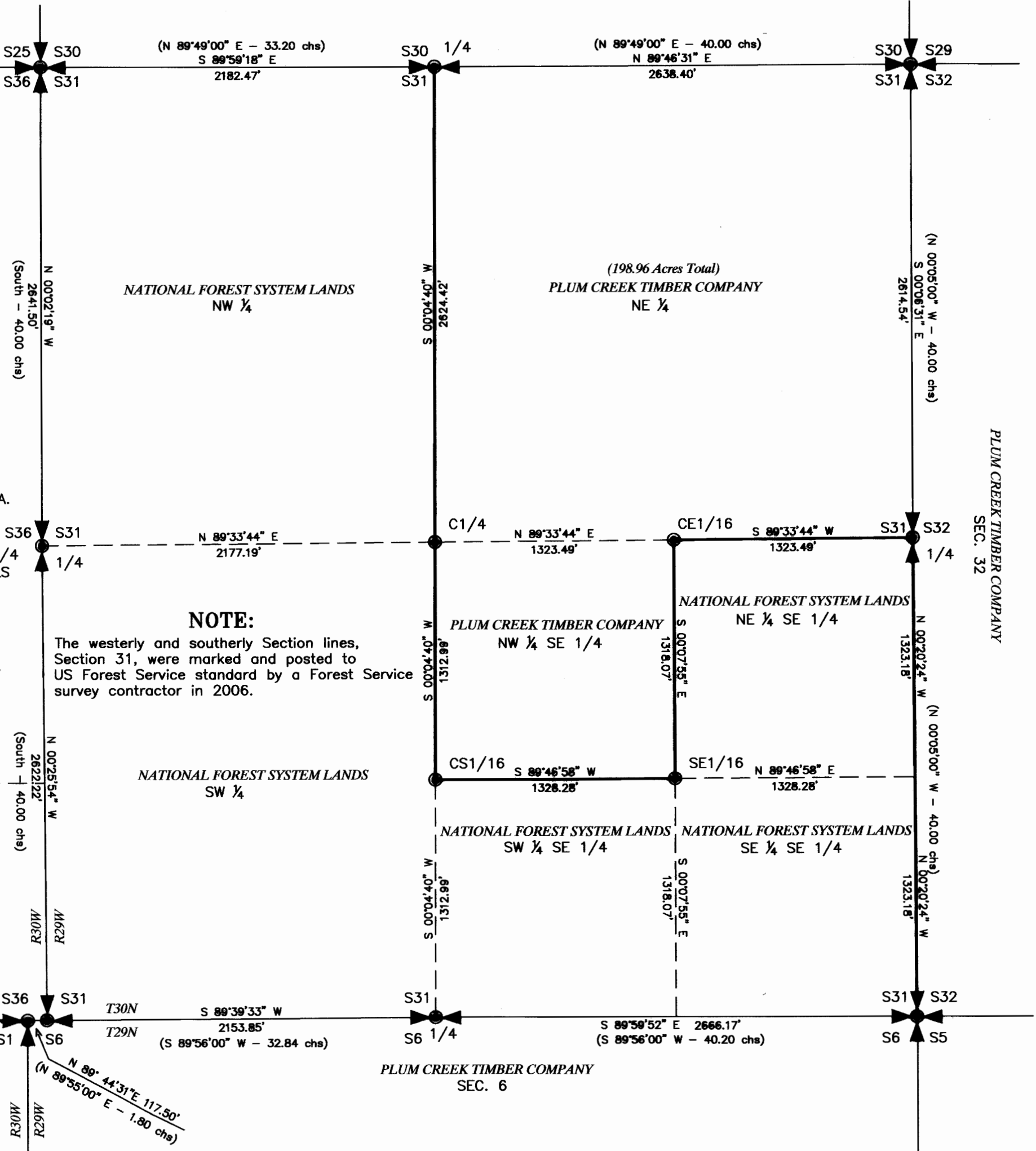
Doc # 205660

VICINITY DIAGRAM



LEGEND

- FOUND SECTION CORNER OR 1/4 CORNER, A 3 1/4 INCH DIA. BRASS/ALUMINUM CAPPED MONUMENT
- SET 1/16TH CORNER - A 5/8 INCH DIA. REBAR WITH A 3 1/4 INCH DIAMETER USFS ALUMINUM CAP MARKED HUGHES, 7322LS
- () RECORD PER 1903 GLO SUBDIVISION PLAT
- SECTION SUBDIVISION LINE
- PROPERTY BOUNDARY MARKED AND POSTED THIS SURVEY
- EXTERIOR SECTION LINE



STATE OF MONTANA LANDS
S 1/2 S 1/2, SEC. 36

PLUM CREEK TIMBER COMPANY
NE 1/4, SEC. 1

PLUM CREEK TIMBER COMPANY
SEC. 6



GRAPHIC SCALE



(IN FEET)
1 inch = 600 ft.