

CERTIFICATE OF SURVEY

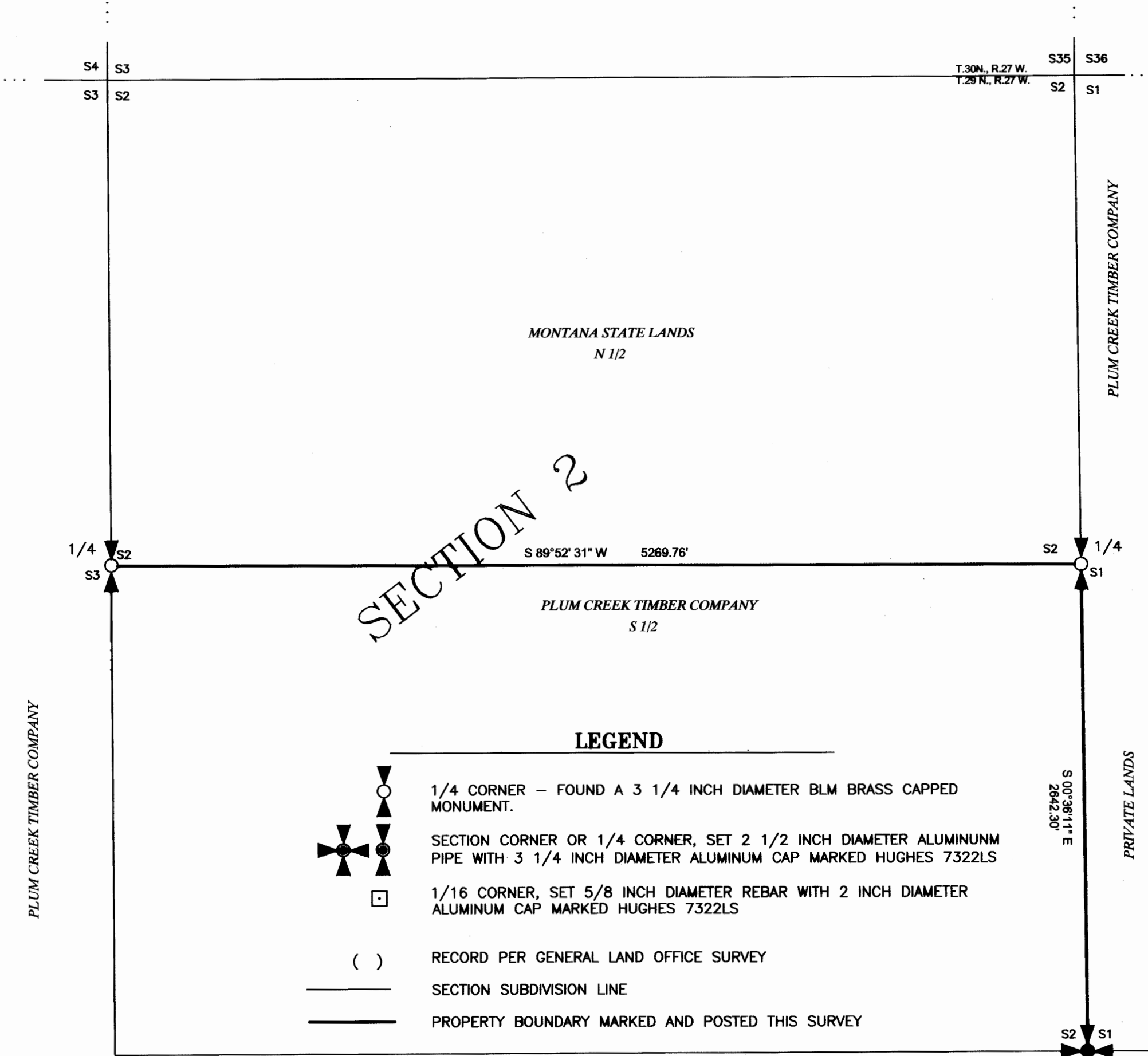
" RETRACEMENT "

S1/2, SEC. 2, NE 1/4 SEC. 11 T.29 N., R.27 W., P.M.,MT.

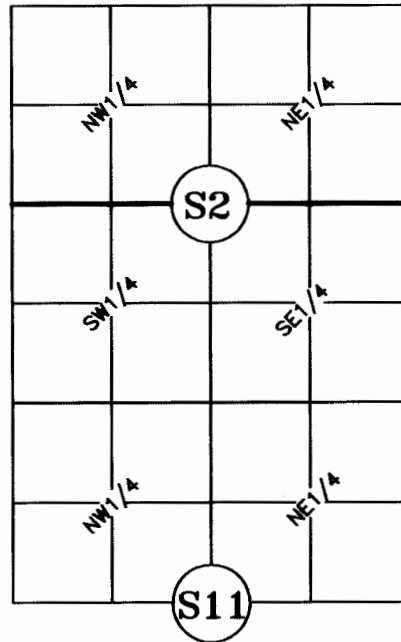
LINCOLN COUNTY, MONTANA

FOR: PLUM CREEK TIMBER CO.

DATE: JANUARY 2007



VICINITY DIAGRAM

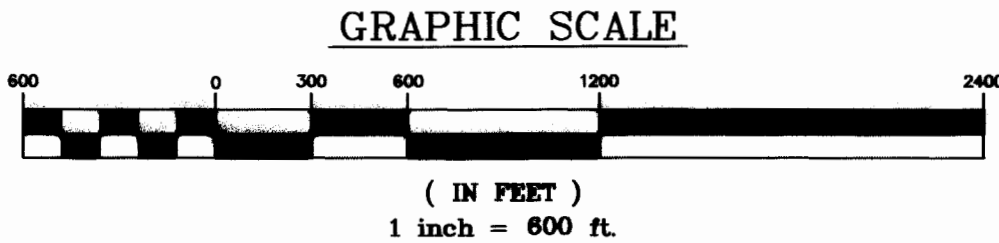


LEGEND

- 1/4 CORNER - FOUND A 3 1/4 INCH DIAMETER BLM BRASS CAPPED MONUMENT.
- SECTION CORNER OR 1/4 CORNER, SET 2 1/2 INCH DIAMETER ALUMINUM PIPE WITH 3 1/4 INCH DIAMETER ALUMINUM CAP MARKED HUGHES 7322LS
- 1/16 CORNER, SET 5/8 INCH DIAMETER REBAR WITH 2 INCH DIAMETER ALUMINUM CAP MARKED HUGHES 7322LS
- () RECORD PER GENERAL LAND OFFICE SURVEY
- SECTION SUBDIVISION LINE
- PROPERTY BOUNDARY MARKED AND POSTED THIS SURVEY

LAND SURVEYOR'S NOTE

Certified Corner Recordations forms are filed with the Lincoln County Clerk and Recorder's office for corners shown hereon. All corners have been maintained and/or remonumented with aluminum capped monuments.



PURPOSE OF SURVEY

The purpose of this survey is the retracement of record parcels of land; the remonumentation of original GLO corners, and mark and post property boundaries. Therefore, no division of land is hereby created and is exempt from review as a subdivision.

HISTORY OF SURVEY

1893, GLO Survey of Township Boundary, J. Keel and A. Jaqueth
1902, GLO Survey of Township Subdivisions, P. Bickel

METHOD OF SURVEY

A total station and data collector was used with closed traverse procedures to tie the previously set controlling corners by Kelly Rooney, December, 2006.

BASIS OF BEARING

The basis of bearing for this survey is "S00°05'E", between the southeast Section corner, Section 2, a 3/4 inch diameter aluminum capped monument and the east 1/4 corner, Section 11, a found original stone monument and remonumented with 3 1/4 inch diameter aluminum capped monument.

LAND SURVEYOR'S CERTIFICATION

I hereby certify that I am a Registered Land Surveyor in the State of Montana, that the survey shown on this Certificate of Survey has been prepared under my supervision and in accordance with the Montana Code Annotated, Sections 76-3-101 through 76-3-625, and the Lincoln County Regulations adopted pursuant thereto.

Alvah F. Hughes, PLS 7322LS, March 31, 2007
Alvah F. Hughes, PLS 7322LS Date



EXAMINING LAND SURVEYOR'S CERTIFICATION

Approved this 22 day of March 2007, A.D.
Examining Land Surveyor *Alvah F. Hughes*, PLS.

CLERK AND RECORDER'S CERTIFICATION

State of Montana, County of Lincoln, filed this 5 day
of April 2007, A.D. at 9:40 o'clock A.M.
Lincoln County Clerk and Recorder *James D. Lauer* by *Francine Lauer* Deputy

CERTIFICATE OF SURVEY No. 3654 Doc 202026