

CERTIFICATE OF SURVEY

"RETRACEMENT"

E1/2, SECTION 10, T.30N., R.31W., P.M., MT.
LINCOLN COUNTY, MONTANA
FOR: LINCOLN COUNTY
PORT AUTHORITY

DATE: APRIL 2005

PURPOSE OF SURVEY

The purpose of the survey is the retracement of a record parcel of land filed in Book 286, Page 50, (all land in Section 10), and establish obliterated/lost corners and mark property boundaries. Therefore no division of land is hereby created and is exempt from review as a subdivision, 76-3-404, MCA.

METHOD OF SURVEY

A total station and RTK GPS were used with closed traverse procedures to tie previously set controlling corners by Ken Kern and John Damon, March 2005.

BASIS OF BEARING

The basis of bearing for this survey is N89°28'04"W, as shown on Plat No. 5685-A, between a 5/8 inch diameter rebar marked 9958S and a found PK nail.

HISTORY OF SURVEY

1974 - BLM Dependent Resurvey and Section Subdivision by Hjelum
1990 - COS No. 1696, Occasional Sale by Davis 4975S
1994 - COS No. 2279, Retracement survey by Marquardt 7328S
1995 - Plat No. 5473, Stinson-Berget Subdivision by Staples 9958S
1998 - COS No. 2665, Aggregation of parcels by Hanson 2523ES
1996 - Plat No. 5685A, Millwood Subdivision by Staples 9958S
1997 - COS No. 2546, Boundary Line Adjustment by Marquardt 7328S
2003 - COS No. 3241, Boundary Line Adjustment by Hughes 7322LS
2004 - Plat No. 6437, Amended Plat, Millwood Subdivision by Staples 9958S
2005 - Plat No. 6585, Amended Plat, Millwood Subdivision by Hughes 7322LS

DESCRIPTION OF PARCEL "A"

An irregular tract of land, southerly from Libby, Montana, Lincoln County, and lying in the East one-half of Section 10, T.30N., R.31W., P.M., MT., being 155.560 acres and more particularly described as follows:

Commencing at the northeast corner of said Section 10, a 3 1/4 inch diameter brass cap marked 534ES and the TRUE POINT OF BEGINNING;
Thence N89°53'05"W, 1359.87 feet along the north boundary of said Section 10, to a 5/8 inch diameter rebar with plastic cap marked 7322LS;
Thence leaving said north section line, S00°09'26"W, 207.28 feet to a 5/8 inch diameter uncapped rebar;
Thence N88°49'18"W, 252.18 feet to a 5/8 inch diameter rebar with plastic cap marked 9958LS;
Thence S00°35'04"W, 1170.01 feet to a 5/8 inch diameter rebar with plastic cap marked 9958LS;
Thence N89°23'40"W, 591.83 feet to a 5/8 inch diameter rebar with plastic cap marked 9958LS;
Thence N54°11'38"W, 57.58 feet to a 5/8 inch diameter rebar with plastic cap marked 9958LS;
Thence N88°58'01"W, 359.34 feet to a 5/8 inch diameter rebar with plastic cap marked 9958LS, said point lying along the easterly right-of-way limits of U.S. Highway No. 2;
Thence along said right-of-way limits S00°47'57"W, 97.25 feet to a 4"x4" concrete highway monument;
Thence continuing along said right-of-way limits, S00°39'21"W, 203.24 feet to a 4"x4" concrete highway monument;
Thence continuing along said right-of-way limits and a curve to the left, through a delta angle of 15°04'34", a radius of 2815.00 feet and an arc length of 740.70 feet to a 5/8 inch diameter rebar with plastic cap marked 7328S;
Thence leaving said right-of-way limits S89°59'41"E, 505.81 feet to a 5/8 inch diameter rebar with plastic cap marked 7328LS;
Thence S00°01'19"W, 209.00 feet to a 5/8 inch diameter rebar with plastic cap marked 7328LS;
Thence S89°59'20"E, 391.60 feet to a 5/8 inch diameter rebar with plastic cap marked 2523ES;
Thence N31°45'24"W, 409.04 feet to a 5/8 inch diameter rebar with plastic cap marked 7322LS;
Thence N31°45'24"W, 212.63 feet to a 5/8 inch diameter rebar with plastic cap marked 9958LS;
Thence N05°13'47"W, 71.78 feet to a 5/8 inch diameter rebar with plastic cap marked 2523ES;
Thence N81°48'06"E, 231.81 feet to a 5/8 inch diameter rebar with plastic cap marked 9958LS;
Thence N84°44'39"E, 76.46 feet to a 5/8 inch diameter rebar with plastic cap marked 9958LS;
Thence N85°13'03"E, 369.24 feet to a 5/8 inch diameter uncapped rebar;
Thence S89°35'14"E, 60.87 feet to a 5/8 inch diameter uncapped rebar;
Thence S11°55'41"W, 259.39 feet to a 5/8 inch diameter rebar with plastic cap marked 7322LS;
Thence S26°32'45"E, 211.74 feet to a 5/8 inch diameter rebar with plastic cap marked 2523ES;
Thence S54°44'27"E, 232.17 feet to a 5/8 inch diameter rebar with plastic cap marked 9958LS;
Thence S37°26'13"E, 139.25 feet to a 5/8 inch diameter rebar with plastic cap marked 9958LS;
Thence S60°11'26"E, 48.51 feet to a 5/8 inch diameter rebar with plastic cap marked 2523ES;
Thence S44°12'40"E, 455.71 feet to a 5/8 inch diameter rebar with plastic cap marked 2523ES;
Thence S13°28'01"W, 445.28 feet to a 5/8 inch diameter rebar with plastic cap marked 2523ES;
Thence S07°19'14"E, 537.56 feet to a 5/8 inch diameter rebar with plastic cap marked 2523ES;
Thence N89°01'03"W, 388.03 feet to a 5/8 inch diameter rebar with plastic cap marked 2523ES;
Thence N71°56'48"W, 338.77 feet to a 5/8 inch diameter rebar with plastic cap marked 2523ES;
Thence S00°12'13"W, 792.01 feet to a 5/8 inch diameter rebar with plastic cap marked 4975S;
Thence N89°49'29"E, 349.94 feet to a 5/8 inch diameter rebar with plastic cap marked 4975S;
Thence S00°11'49"W, 319.99 feet to a 5/8 inch diameter rebar with plastic cap marked 4975S;
Thence N89°46'12"E, 933.52 feet to a 5/8 inch diameter rebar with plastic cap marked 7322LS, said point lying along the east boundary line of said Section 10;
Thence along said section line N00°11'36"E, 4893.77 feet to a 3 1/4 inch diameter brass cap marked 534ES and the northeast corner of said Section 10 and the TRUE POINT OF BEGINNING, containing 155.560 acres.

Subject to and together with all appurtenant easements of record.

LAND SURVEYOR'S CERTIFICATION

I hereby certify that I am a Registered Land Surveyor in the State of Montana, that the survey shown on this Certificate of Survey has been prepared under my supervision and in accordance with the Montana Code Annotated, Sections 76-3-101 through 76-3-625, and the Lincoln County Regulations adopted pursuant thereto.

Alvin F. Hughes, PLS, 7322LS
Alvin F. Hughes, PLS, 7322LS Date

EXAMINING LAND SURVEYOR'S CERTIFICATION:

Approved this 21 day of October 2005

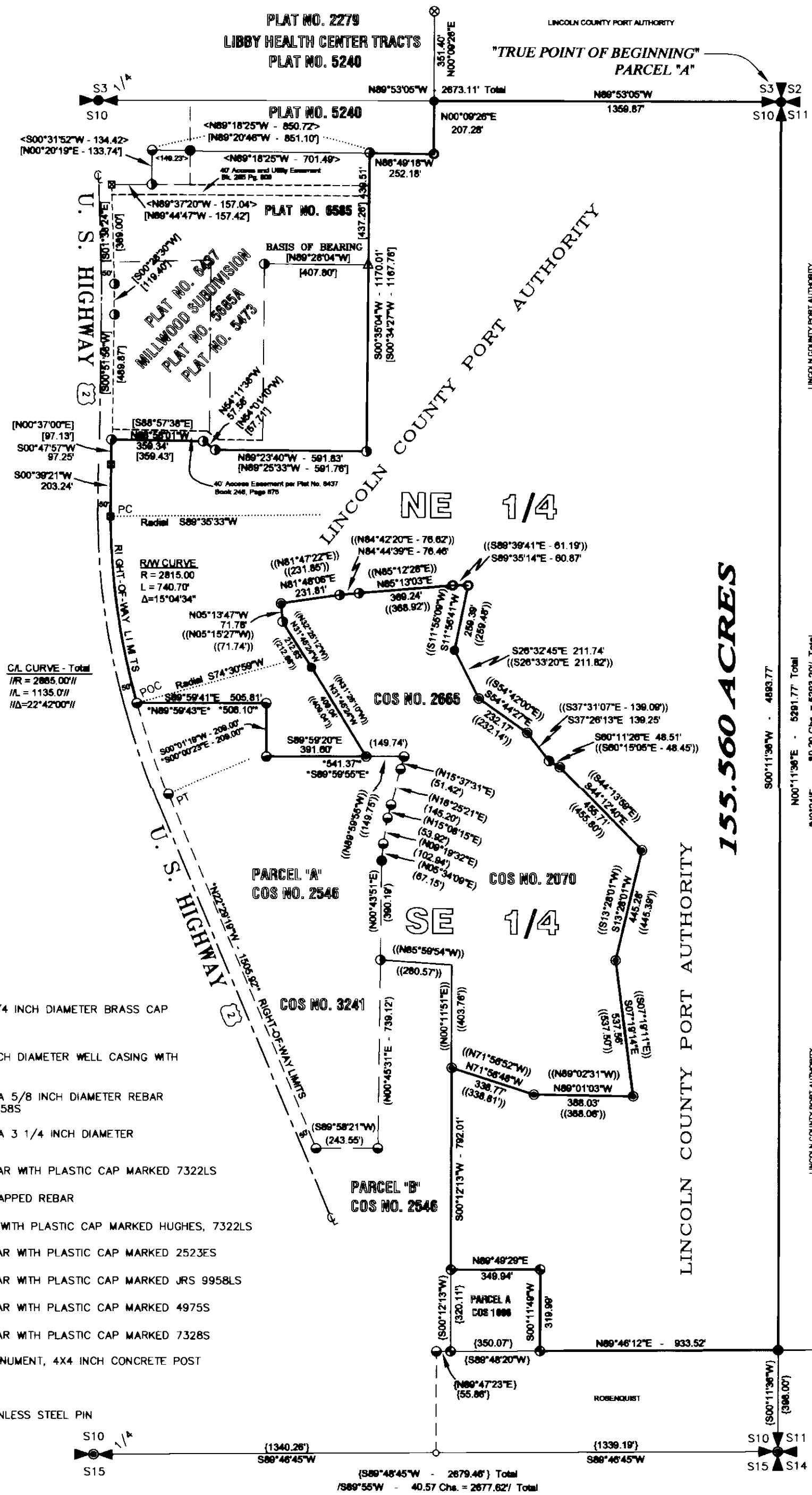
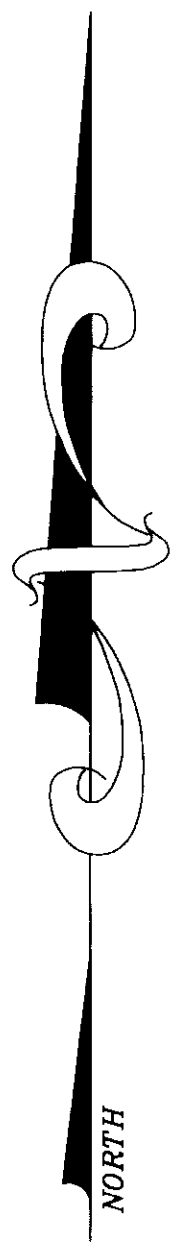
Alvin F. Hughes, PLS, 7322LS
Examining Land Surveyor

CLERK AND RECORDER'S CERTIFICATION

State of Montana, County of Lincoln, filed this 31 day

of 2005, A.D. at 8:40 o'clock A.M.
by *Alvin F. Hughes, PLS, 7322LS*
Lincoln County Clerk Recorder & Recorder Deputy

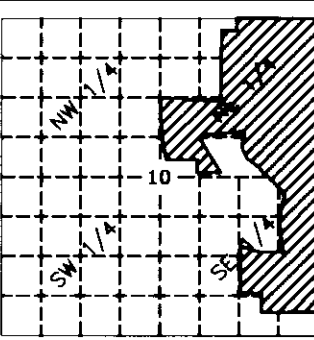
CERTIFICATE OF SURVEY NO. 3448 Doc. 189320



LEGEND

- FOUND SECTION CORNER, A 3 1/4 INCH DIAMETER BRASS CAP MONUMENT MARKED 534ES
- FOUND SECTION CORNER - 4 INCH DIAMETER WELL CASING WITH 4 INCH DIAMETER CAP
- FOUND ONE-QUARTER CORNER, A 5/8 INCH DIAMETER REBAR WITH ALUMINUM CAP MARKED 9958S
- FOUND ONE-QUARTER CORNER, A 3 1/4 INCH DIAMETER BLM BRASS CAP
- FOUND 5/8 INCH DIAMETER REBAR WITH PLASTIC CAP MARKED 7322LS
- FOUND 5/8 INCH DIAMETER UNCAPPED REBAR
- SET 5/8 INCH DIAMETER REBAR WITH PLASTIC CAP MARKED HUGHES, 7322LS
- FOUND 5/8 INCH DIAMETER REBAR WITH PLASTIC CAP MARKED 2523ES
- FOUND 5/8 INCH DIAMETER REBAR WITH PLASTIC CAP MARKED JRS 9958LS
- FOUND 5/8 INCH DIAMETER REBAR WITH PLASTIC CAP MARKED 4975S
- FOUND 5/8 INCH DIAMETER REBAR WITH PLASTIC CAP MARKED 7328S
- FOUND MDOT RIGHT-OF-WAY MONUMENT, 4X4 INCH CONCRETE POST
- FOUND PK NAIL IN PAVEMENT
- FOUND 5/8 INCH DIAMETER STAINLESS STEEL PIN
- COMPUTED POINT
- RECORD COS NO. 2665
- RECORD COS NO. 3241
- RECORD 1974 BLM RESURVEY PLAT
- RECORD COS NO. 6437
- RECORD PLAT NO. 6585
- RECORD COS NO. 2546
- RECORD PER 1973 MDOT PLAT

VICINITY DIAGRAM



SECTION 10

GRAPHIC SCALE



(IN FEET)

1 inch = 400 ft.

