

CERTIFICATE OF SURVEY

RETRACEMENT

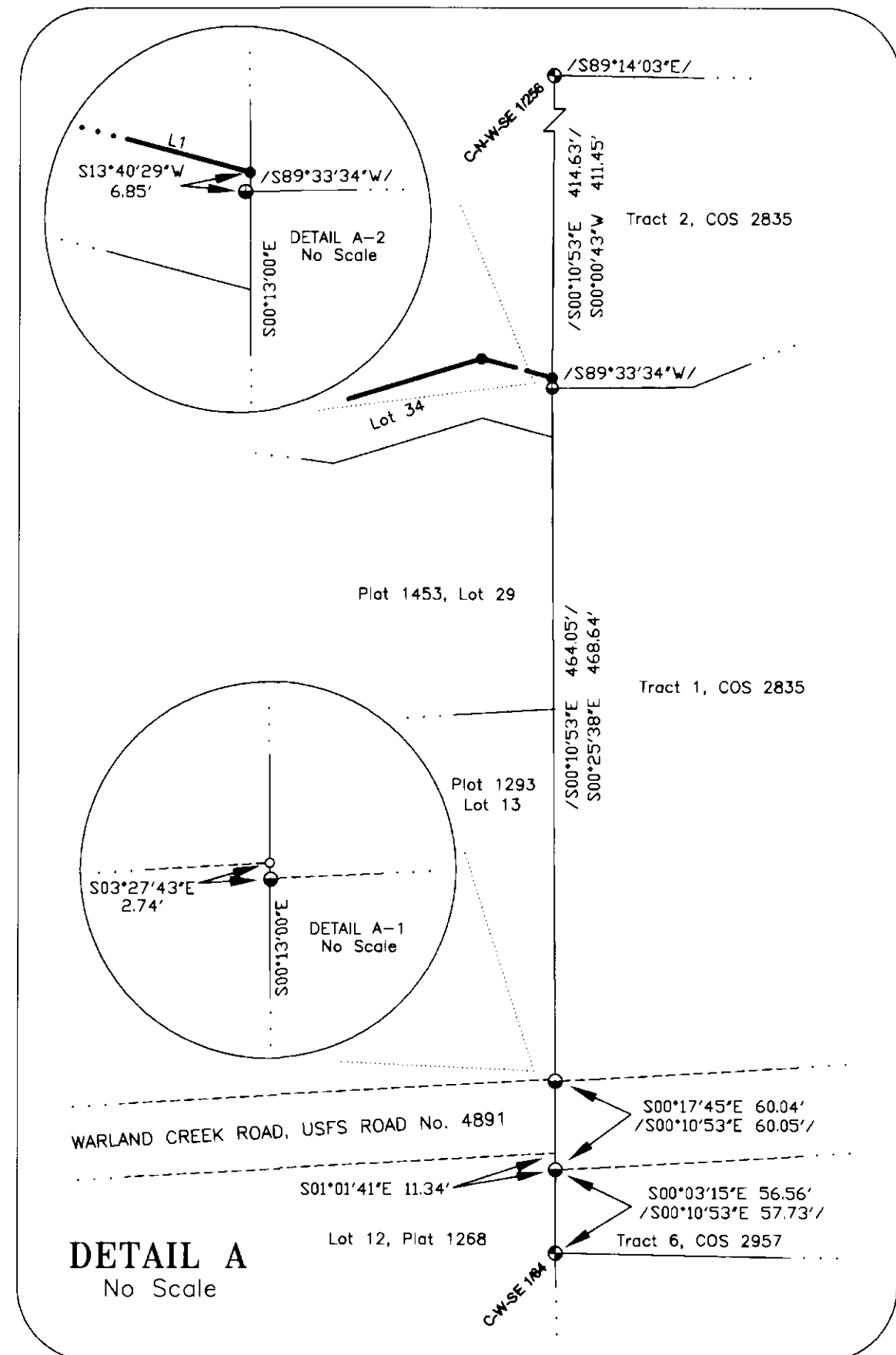
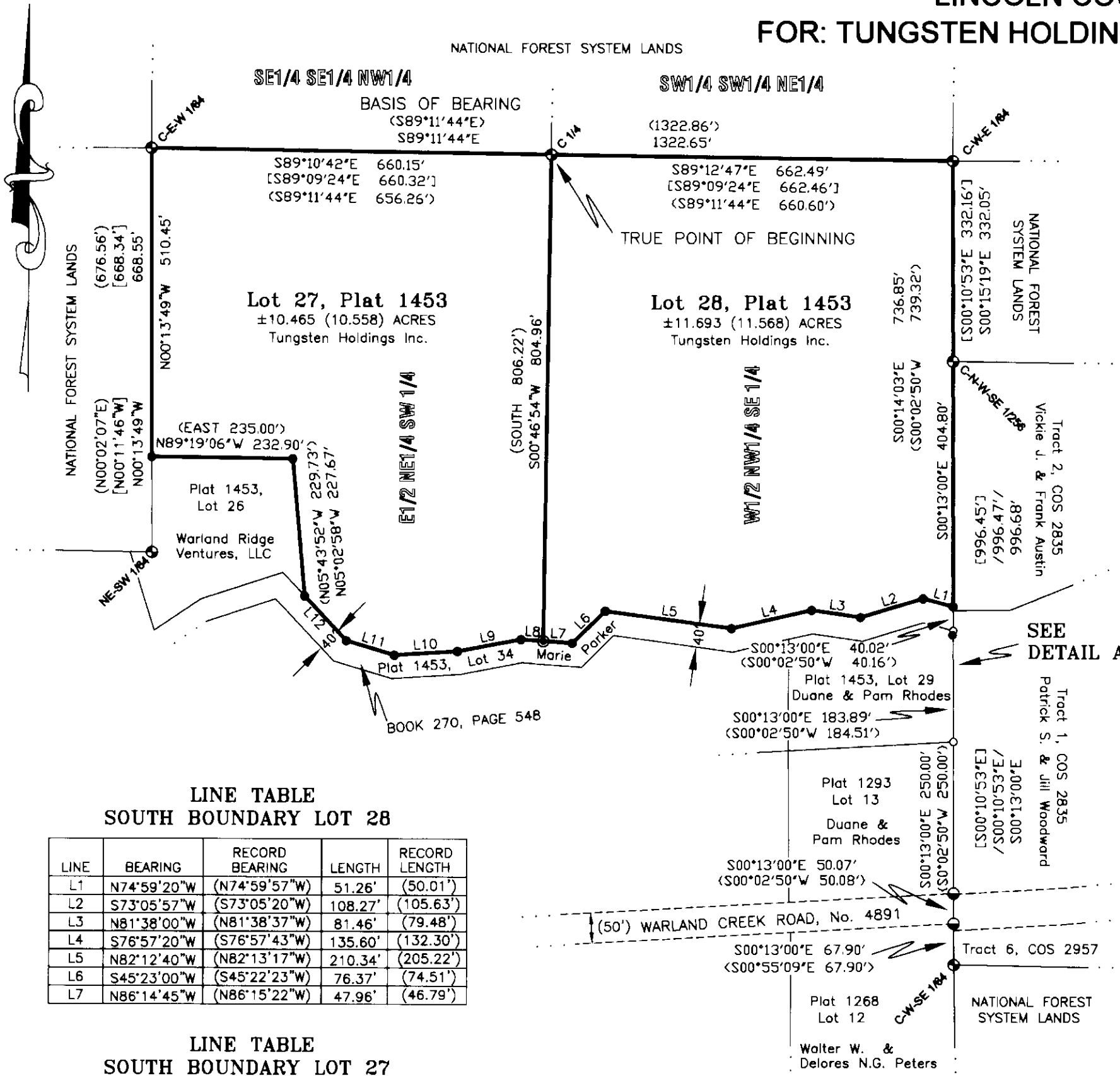
"McALMOND CLAIM" LOTS 27 AND 28

W1/2 NW1/4 SE1/4, E1/2 NE1/4 SW1/4, SECTION 30, T.32N., R.28W., P.M., MT.

LINCOLN COUNTY, MONTANA

FOR: TUNGSTEN HOLDINGS, INC.

DATE: APRIL 2005



PURPOSE OF SURVEY

The purpose of this survey is the retracement of "McAlmond Claim, Lots 27 and 28", Plat No. 1453 and establish obliterated/lost corners and mark property boundaries. Therefore no division of land is hereby created and is exempt from review as a subdivision, 76-3-404, MCA.

METHOD OF SURVEY

A total station with data collector with closed traverse procedures was used to tie previously set controlling monuments by Pete Landis, April 2005.

BASIS OF BEARING

The basis of bearing for this survey is S89°11'44"E, as shown on Plat No. 1453, between C-E-W 1/64 and C-W-E 1/64 corners, both being aluminum pipes with 3 1/4 inch diameter USFS aluminum caps marked 9008LS

HISTORY OF SURVEY

- 1967, Plat No. 1268, "McAlmond Claim, Lots 1-12", Norris, 2195E
- 1967, Plat No. 1293, "McAlmond Claim, Lots 13-18", Norris, 2195E
- 1968, Plat No. 1453, "McAlmond Claim, Lots 23-34", Norris, 2195E
- 1991, COS No. 1817, Aliquot subdivision of S1/2, Sec. 30, Pearson, 9008LS
- 1995, COS No. 2308, Retracement, "McAlmond Claim, Lots 8-12", Goocher, 7318S
- 1996 - 2000, COS No's 2437, 2835, and 2957, adjoining east boundary, "McAlmond Claim", Staples 9958LS

LEGAL DESCRIPTION - LOT 27

An irregular tract of land, northeasterly from Libby, Montana, Lincoln County, and lying in the E1/2 NE1/4 SW1/4, Section 30, T.32N., R.28W., P.M., MT., containing ±10.465 acres and more particularly described as follows:
Commencing at the C1/4, Section 30, a 2 1/2 inch diameter aluminum pipe with a 3 1/4 inch aluminum cap marked USFS, 9008LS and the TRUE POINT OF BEGINNING; Thence along the north-south midsection line, S00°46'54"W, 804.96 feet to a 5/8 inch diameter uncapped rebar; Thence along the southerly property line of Lot 27, through the following courses: N85°34'28"W 36.86 feet, S79°07'37"W 106.66 feet, S86°28'57"W 104.54 feet, N73°25'18"W 82.58 feet, N42°52'18"W 101.63 feet, said courses monumented with 5/8 inch diameter rebar with plastic cap marked Hughes, 7322LS; Thence N05°02'58"W, 227.67 feet to a 5/8 inch diameter rebar with plastic cap marked Hughes, 7322LS; Thence N89°19'06"W, 232.90 feet to a 5/8 inch diameter rebar with plastic cap marked Hughes, 7322LS; Thence along a north-south 1/64th line, N00°13'49"W, 510.45 feet, a 2 1/2 inch diameter aluminum pipe with a 3 1/4 inch aluminum cap marked USFS, 9008LS; Thence along the east-west midsection line, S89°10'42"E, 660.15 feet to said C 1/4 corner, a 2 1/2 inch diameter aluminum pipe with a 3 1/4 inch aluminum cap marked USFS, 9008LS and the True Point of Beginning, containing ±10.465 acres. Subject to and together with all appurtenant easements of record.

LEGAL DESCRIPTION - LOT 28

An irregular tract of land, northeasterly from Libby, Montana, Lincoln County, and lying in the W1/2 NW1/4 SE1/4, Section 30, T.32N., R.28W., P.M., MT., containing ±11.693 acres and more particularly described as follows:
Commencing at the C1/4, Section 30, a 2 1/2 inch diameter aluminum pipe with a 3 1/4 inch aluminum cap marked USFS, 9008LS and the TRUE POINT OF BEGINNING; Thence along east-west midsection line, S89°12'47"E, 662.49 feet to the C-W-E 1/64 corner, a 3 1/4 inch aluminum cap marked USFS, 9008LS; Thence along a north-south 1/64th line, S00°15'19"E, 332.05 feet to the C-N-W-SE 1/256 corner, a 3 1/4 inch aluminum cap marked USFS, 9008LS; Thence along said line, S00°13'00"E, 404.80 feet, a 5/8 inch diameter rebar with plastic cap marked Hughes, 7322LS; Thence along property line between Lots 28 and 34, through the following courses: N74°59'20"W 51.26 feet, S73°05'57"W 108.27 feet, S78°26'43"W 106.66 feet, N81°38'00"W 81.46 feet, S76°57'20"W 135.60 feet, S45°23'00"W 76.37 feet, said courses monumented with 5/8 inch diameter rebar with plastic cap marked Hughes, 7322LS; Thence along said line, N86°14'45"W, 47.96 feet to a 5/8 inch diameter uncapped rebar; Thence along the north-south midsection line, N00°46'54"E, 804.96 feet to said C 1/4 corner, a 2 1/2 inch diameter aluminum pipe with a 3 1/4 inch aluminum cap marked USFS, 9008LS and the TRUE POINT OF BEGINNING, containing ±11.693 acres. Subject to and together with all appurtenant easements of record.

LINE TABLE SOUTH BOUNDARY LOT 28

LINE	BEARING	RECORD BEARING	LENGTH	RECORD LENGTH
L1	N74°59'20"W	(N74°59'57"W)	51.26'	(50.01')
L2	S73°05'57"W	(S73°05'20"W)	108.27'	(105.63')
L3	N81°38'00"W	(N81°38'37"W)	81.46'	(79.48')
L4	S76°57'20"W	(S76°57'43"W)	135.60'	(132.30')
L5	N82°12'40"W	(N82°13'17"W)	210.34'	(205.22')
L6	S45°23'00"W	(S45°22'23"W)	76.37'	(74.51')
L7	N86°14'45"W	(N86°15'22"W)	47.96'	(46.79')

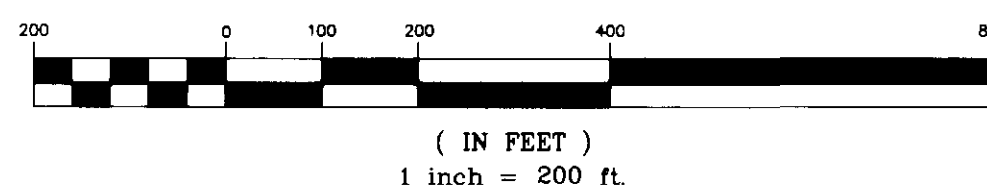
LINE TABLE SOUTH BOUNDARY LOT 27

LINE	BEARING	RECORD BEARING	LENGTH	RECORD LENGTH
L8	N85°34'28"W	(N86°15'22"W)	36.86'	(37.19')
L9	S79°07'37"W	(S78°26'43"W)	106.66'	(107.63')
L10	S86°28'57"W	(S85°48'03"W)	104.54'	(105.49')
L11	N73°25'18"W	(N74°06'12"W)	82.58'	(83.33')
L12	N42°52'18"W	(N43°33'12"W)	101.63'	(102.55')

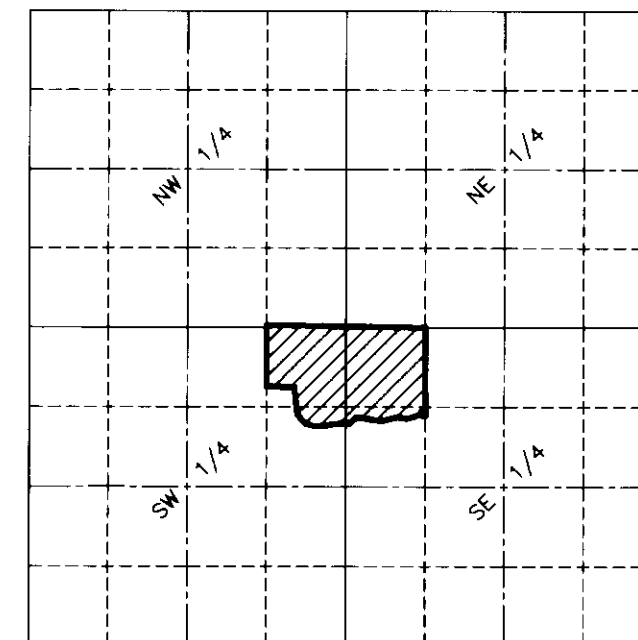
LEGEND

- FOUND 5/8 INCH DIAMETER UNCAPPED REBAR
- FOUND SUBDIVISION CORNER, 2 1/2 INCH DIAMETER ALUMINUM PIPE WITH 3 1/4 INCH DIAMETER USFS ALUMINUM CAP MARKED 9008LS
- FOUND 5/8 INCH DIAMETER REBAR, PLASTIC CAP MARKED JRS 9958LS
- SET 5/8 INCH DIAMETER REBAR WITH PLASTIC CAP MARKED HUGHES, 7322LS
- COMPUTED POINT ONLY
- { } RECORD PLAT 1293
- () RECORD PLAT 1453
- [] RECORD COS 1817
- < > RECORD COS 2308
- // RECORD COS's 2437, 2835, 2957
- PROPERTY LINE, THIS SURVEY
- ADJOINING PROPERTY LINES
- - - RIGHT-OF-WAY LIMITS

GRAPHIC SCALE



VICINITY DIAGRAM SECTION 30



LAND SURVEYOR'S CERTIFICATION

I hereby certify that I am a Registered Land Surveyor in the State of Montana, that the survey shown on this Certificate of Survey has been prepared under my supervision and in accordance with the Montana Code Annotated, Sections 76-3-101 through 76-3-625, and the Lincoln County Regulations adopted pursuant thereto.
Alvah F. Hughes, PLS, 7322LS 05/30/05 Date
Alvah F. Hughes, PLS, 7322LS

EXAMINING LAND SURVEYOR'S CERTIFICATION

Approved this 20th day of May, 2005, at Libby, Montana.
Donald H. Veck 41309
Examining Land Surveyor

CLERK AND RECORDER'S CERTIFICATION

State of Montana, County of Lincoln, filed this 1st day of June, 2005, A.D. at 9:00 o'clock A.M.
Carol A. Summers by *Joanne Danni*
County Clerk Recorder Deputy

CERTIFICATE OF SURVEY NO. 3417

Doc #189795