

LEGAL DESCRIPTION - PARCEL "A"

An irregular tract of land lying southwesterly from Eureka, Montana, in Lincoln County, lying in the SE1/4 NW1/4, Section 27, T.36N., R.27W., P.M., MT., containing ±10.146 acres and more particularly described as follows:

Commencing at the C1/4 corner, Section 27, a 5/8 inch diameter rebar with plastic cap marked 7328S and being the TRUE POINT OF BEGINNING:

Thence N00°05'13"W, 1317.33 feet to the CN1/16th corner, a 3 1/4 inch diameter USFS aluminum cap monument marked 9008LS;

Thence N89°28'21"W, 335.11 feet to a 5/8 inch diameter rebar with plastic cap marked Hughes, 7322LS;

Thence S00°03'09"E, 1317.44 feet to a 5/8 inch diameter rebar with plastic cap marked 7328S;

Thence S89°29'33"E, 335.90 feet to said C1/4 corner, a 5/8 inch diameter rebar with plastic cap marked 7328S and the TRUE POINT OF BEGINNING, containing ±10.146 acres.

Subject to and together with all appurtenant easements of record.

LEGAL DESCRIPTION - PARCEL "B"

An irregular tract of land lying southwesterly from Eureka, Montana, in Lincoln County, lying in the SE1/4 NW1/4, Section 27, T.36N., R.27W., P.M., MT., containing ±20.287 acres and more particularly described as follows:

Commencing at the CW1/16th corner, Section 27, a 5/8 inch diameter rebar with plastic cap marked 7328S and the TRUE POINT OF BEGINNING:

Thence S89°28'59"E, 335.85 feet to a 5/8 inch diameter rebar with plastic cap marked 7328S;

Thence N00°01'06"E, 1317.66 feet to a 5/8 inch diameter rebar with plastic cap marked 7328S;

Thence S89°28'21"E, 669.94 feet to a 5/8 inch diameter rebar with plastic cap marked 7328S;

Thence S00°03'09"E, 1317.44 feet to a 5/8 inch diameter rebar with plastic cap marked 7328S;

Thence N89°29'33"W, 671.57 feet to a 5/8 inch diameter rebar with plastic cap marked 7328S and the TRUE POINT OF BEGINNING, containing ±20.287 acres.

Subject to and together with all appurtenant easements of record.

CERTIFICATE OF SURVEY

"BOUNDARY LINE ADJUSTMENT"

SE1/4 NW1/4 & SW1/4 NE1/4, SECTION 27, T.36N., R.27W., P.M., MT.

LINCOLN COUNTY, MONTANA

FOR: GARY & LINDA MONTGOMERY

DATE: MARCH 2005

LEGAL DESCRIPTION - TRACT "1" (includes Parcel "A")

An irregular tract of land lying southwesterly from Eureka, Montana, Lincoln County, lying in the SE1/4 NW1/4, SW1/4 NE1/4, Section 27, T.36N., R.27W., P.M., MT., containing ±40.455 acres and more particularly described as follows:

Commencing at the C1/4, Section 27, a 5/8 inch diameter rebar with plastic cap marked 7328S and the TRUE POINT OF BEGINNING:

Thence S89°34'21"E, 585.76 feet, a 5/8 inch diameter rebar with plastic cap marked 2989ES;

Thence N26°45'43"W, 1000.13 feet, a 5/8 inch diameter rebar with plastic cap marked 2989ES;

Thence S89°26'30"E, 490.18 feet, a 5/8 inch diameter rebar with plastic cap marked 2989ES;

Thence S26°45'43"E, 1000.08 feet, a 5/8 inch diameter rebar with plastic cap marked 2989ES;

Thence S89°26'50"E, 257.59 feet, the CE1/16 corner, a 3 1/4 inch diameter USFS aluminum cap monument marked 9008LS;

Thence N00°04'23"W, 1316.63 feet, the NE1/16 corner, a 3 1/4 inch diameter USFS aluminum cap monument marked 9008LS;

Thence N89°28'21"W, 1333.83 feet to the CN1/16 corner, a 3 1/4 inch diameter USFS aluminum cap monument marked 9008LS;

Thence N89°28'21"W, 1333.83 feet to the CN1/16 corner, a 3 1/4 inch diameter USFS aluminum cap monument marked 9008LS;

Thence N89°28'21"W, 1333.83 feet to the CN1/16 corner, a 3 1/4 inch diameter USFS aluminum cap monument marked 9008LS;

Thence N89°28'21"W, 1333.83 feet to the CN1/16 corner, a 3 1/4 inch diameter USFS aluminum cap monument marked 9008LS;

Thence N89°28'21"W, 1333.83 feet to the CN1/16 corner, a 3 1/4 inch diameter USFS aluminum cap monument marked 9008LS;

Thence N89°28'21"W, 1333.83 feet to the CN1/16 corner, a 3 1/4 inch diameter USFS aluminum cap monument marked 9008LS;

Thence N89°28'21"W, 1333.83 feet to the CN1/16 corner, a 3 1/4 inch diameter USFS aluminum cap monument marked 9008LS;

Thence N89°28'21"W, 1333.83 feet to the CN1/16 corner, a 3 1/4 inch diameter USFS aluminum cap monument marked 9008LS;

Thence N89°28'21"W, 1333.83 feet to the CN1/16 corner, a 3 1/4 inch diameter USFS aluminum cap monument marked 9008LS;

Thence N89°28'21"W, 1333.83 feet to the CN1/16 corner, a 3 1/4 inch diameter USFS aluminum cap monument marked 9008LS;

Thence N89°28'21"W, 1333.83 feet to the CN1/16 corner, a 3 1/4 inch diameter USFS aluminum cap monument marked 9008LS;

Thence N89°28'21"W, 1333.83 feet to the CN1/16 corner, a 3 1/4 inch diameter USFS aluminum cap monument marked 9008LS;

Thence N89°28'21"W, 1333.83 feet to the CN1/16 corner, a 3 1/4 inch diameter USFS aluminum cap monument marked 9008LS;

Thence N89°28'21"W, 1333.83 feet to the CN1/16 corner, a 3 1/4 inch diameter USFS aluminum cap monument marked 9008LS;

Thence N89°28'21"W, 1333.83 feet to the CN1/16 corner, a 3 1/4 inch diameter USFS aluminum cap monument marked 9008LS;

Thence N89°28'21"W, 1333.83 feet to the CN1/16 corner, a 3 1/4 inch diameter USFS aluminum cap monument marked 9008LS;

Thence N89°28'21"W, 1333.83 feet to the CN1/16 corner, a 3 1/4 inch diameter USFS aluminum cap monument marked 9008LS;

Thence N89°28'21"W, 1333.83 feet to the CN1/16 corner, a 3 1/4 inch diameter USFS aluminum cap monument marked 9008LS;

Thence N89°28'21"W, 1333.83 feet to the CN1/16 corner, a 3 1/4 inch diameter USFS aluminum cap monument marked 9008LS;

Thence N89°28'21"W, 1333.83 feet to the CN1/16 corner, a 3 1/4 inch diameter USFS aluminum cap monument marked 9008LS;

Thence N89°28'21"W, 1333.83 feet to the CN1/16 corner, a 3 1/4 inch diameter USFS aluminum cap monument marked 9008LS;

Thence N89°28'21"W, 1333.83 feet to the CN1/16 corner, a 3 1/4 inch diameter USFS aluminum cap monument marked 9008LS;

Thence N89°28'21"W, 1333.83 feet to the CN1/16 corner, a 3 1/4 inch diameter USFS aluminum cap monument marked 9008LS;

Thence N89°28'21"W, 1333.83 feet to the CN1/16 corner, a 3 1/4 inch diameter USFS aluminum cap monument marked 9008LS;

Thence N89°28'21"W, 1333.83 feet to the CN1/16 corner, a 3 1/4 inch diameter USFS aluminum cap monument marked 9008LS;

Thence N89°28'21"W, 1333.83 feet to the CN1/16 corner, a 3 1/4 inch diameter USFS aluminum cap monument marked 9008LS;

Thence N89°28'21"W, 1333.83 feet to the CN1/16 corner, a 3 1/4 inch diameter USFS aluminum cap monument marked 9008LS;

Thence N89°28'21"W, 1333.83 feet to the CN1/16 corner, a 3 1/4 inch diameter USFS aluminum cap monument marked 9008LS;

Thence N89°28'21"W, 1333.83 feet to the CN1/16 corner, a 3 1/4 inch diameter USFS aluminum cap monument marked 9008LS;

Thence N89°28'21"W, 1333.83 feet to the CN1/16 corner, a 3 1/4 inch diameter USFS aluminum cap monument marked 9008LS;

Thence N89°28'21"W, 1333.83 feet to the CN1/16 corner, a 3 1/4 inch diameter USFS aluminum cap monument marked 9008LS;

Thence N89°28'21"W, 1333.83 feet to the CN1/16 corner, a 3 1/4 inch diameter USFS aluminum cap monument marked 9008LS;

Thence N89°28'21"W, 1333.83 feet to the CN1/16 corner, a 3 1/4 inch diameter USFS aluminum cap monument marked 9008LS;

Thence N89°28'21"W, 1333.83 feet to the CN1/16 corner, a 3 1/4 inch diameter USFS aluminum cap monument marked 9008LS;

Thence N89°28'21"W, 1333.83 feet to the CN1/16 corner, a 3 1/4 inch diameter USFS aluminum cap monument marked 9008LS;

Thence N89°28'21"W, 1333.83 feet to the CN1/16 corner, a 3 1/4 inch diameter USFS aluminum cap monument marked 9008LS;

Thence N89°28'21"W, 1333.83 feet to the CN1/16 corner, a 3 1/4 inch diameter USFS aluminum cap monument marked 9008LS;

Thence N89°28'21"W, 1333.83 feet to the CN1/16 corner, a 3 1/4 inch diameter USFS aluminum cap monument marked 9008LS;

Thence N89°28'21"W, 1333.83 feet to the CN1/16 corner, a 3 1/4 inch diameter USFS aluminum cap monument marked 9008LS;

Thence N89°28'21"W, 1333.83 feet to the CN1/16 corner, a 3 1/4 inch diameter USFS aluminum cap monument marked 9008LS;

Thence N89°28'21"W, 1333.83 feet to the CN1/16 corner, a 3 1/4 inch diameter USFS aluminum cap monument marked 9008LS;

Thence N89°28'21"W, 1333.83 feet to the CN1/16 corner, a 3 1/4 inch diameter USFS aluminum cap monument marked 9008LS;

Thence N89°28'21"W, 1333.83 feet to the CN1/16 corner, a 3 1/4 inch diameter USFS aluminum cap monument marked 9008LS;

Thence N89°28'21"W, 1333.83 feet to the CN1/16 corner, a 3 1/4 inch diameter USFS aluminum cap monument marked 9008LS;

Thence N89°28'21"W, 1333.83 feet to the CN1/16 corner, a 3 1/4 inch diameter USFS aluminum cap monument marked 9008LS;

Thence N89°28'21"W, 1333.83 feet to the CN1/16 corner, a 3 1/4 inch diameter USFS aluminum cap monument marked 9008LS;

Thence N89°28'21"W, 1333.83 feet to the CN1/16 corner, a 3 1/4 inch diameter USFS aluminum cap monument marked 9008LS;

Thence N89°28'21"W, 1333.83 feet to the CN1/16 corner, a 3 1/4 inch diameter USFS aluminum cap monument marked 9008LS;

Thence N89°28'21"W, 1333.83 feet to the CN1/16 corner, a 3 1/4 inch diameter USFS aluminum cap monument marked 9008LS;

PURPOSE OF SURVEY AND OWNER'S CERTIFICATION

We, Linda L. and Gary L. Montgomery, Co-Trustees, and Robert J. Miller, record owner's, hereby certify that this survey and division of land is exempt from subdivision review pursuant to MCA 76-3-207(1)(a): "divisions made outside of a platted subdivision for the purpose of relocating common boundary lines between adjoining properties". We further certify that Parcel "A" is exempt from review by the Department of Environmental Quality pursuant to ARM 17.36.605 Exclusions 2(a): "a parcel that has no existing facilities for water supply, wastewater disposal, and solid waste disposal, if no new facilities will be constructed on the parcel".

Gary L. Montgomery 5/1/05
Date

Linda L. Montgomery 5-1-05
Date

Robert J. Miller 5-1-05
Date

Robert J. Miller 5-1-05
Date

ACKNOWLEDGMENT

The foregoing Certifications of Exemptions was subscribed and acknowledged before me a Notary Public for the State of Montana, County of Lincoln, by the above named person(s), on this 1st day of May, 2005. In witness whereof, I have hereunto set my hand and affixed my notarial seal.

Doris Dee Senne, Notary Public for the State of Montana

residing in Eureka, Co. My Commission expires: 3/1/07

ACKNOWLEDGMENT

The foregoing Certifications of Exemptions was subscribed and acknowledged before me a Notary Public for the State of Montana, County of Lincoln, by the above named person(s), on this 14th day of May, 2005. In witness whereof, I have hereunto set my hand and affixed my notarial seal.

Connie Schreier, Notary Public for the State of Montana

residing in Eureka, Co. My Commission expires: 08/14/2008

HISTORY OF SURVEY

1893 - Original GLO, Subdivision of Township by McCordell & Jaqueth
1959 - BLM Remonumentation of corners by Cunningham
1987 - COS No. 1543, Irregular Tract (Parcel "A"), by Marquardt
1999 - COS No. 2880, Family Transfer, Marquardt
2003 - COS No. 3156, Boundary Line Adjustment by Marquardt
2004 - Plat "Tobacco Valley Rod and Gun Club Subdivision" by Hughes

METHOD OF SURVEY

A total station and data collector was used with closed traverse procedures to tie the previously set controlling corners by Kenneth Kern, February, 2005.

BASIS OF BEARING

The basis of bearing for this survey is N89°26'50"W between found 5/8 inch diameter rebars with plastic caps marked 2989ES, as shown on COS No. 1543 along the south boundary line of Parcel "A" shown thereon.

LAND SURVEYOR'S CERTIFICATION

I hereby certify that I am a Registered Land Surveyor in the State of Montana, that the survey shown on this Certificate of Survey has been prepared under my supervision and in accordance with the Montana Code Annotated, Sections 76-3-101 through 76-3-625, and the Lincoln County Regulations adopted pursuant thereto.

Alvah F. Hughes, PLS, 7322LS 04/25/05
Date

EXAMINING LAND SURVEYOR'S CERTIFICATION

Approved this 17th day of May, 2005

Examining Land Surveyor

LINCOLN COUNTY TREASURER'S CERTIFICATION

I hereby certify, pursuant to Section 76-3-207(3), M.C.A., that all real property taxes and special assessments assessed and levied on the parcel shown hereon are paid.

Libby Montano, Lincoln County Treasurer

May 23, 2005
Date

CLERK AND RECORDER'S CERTIFICATION

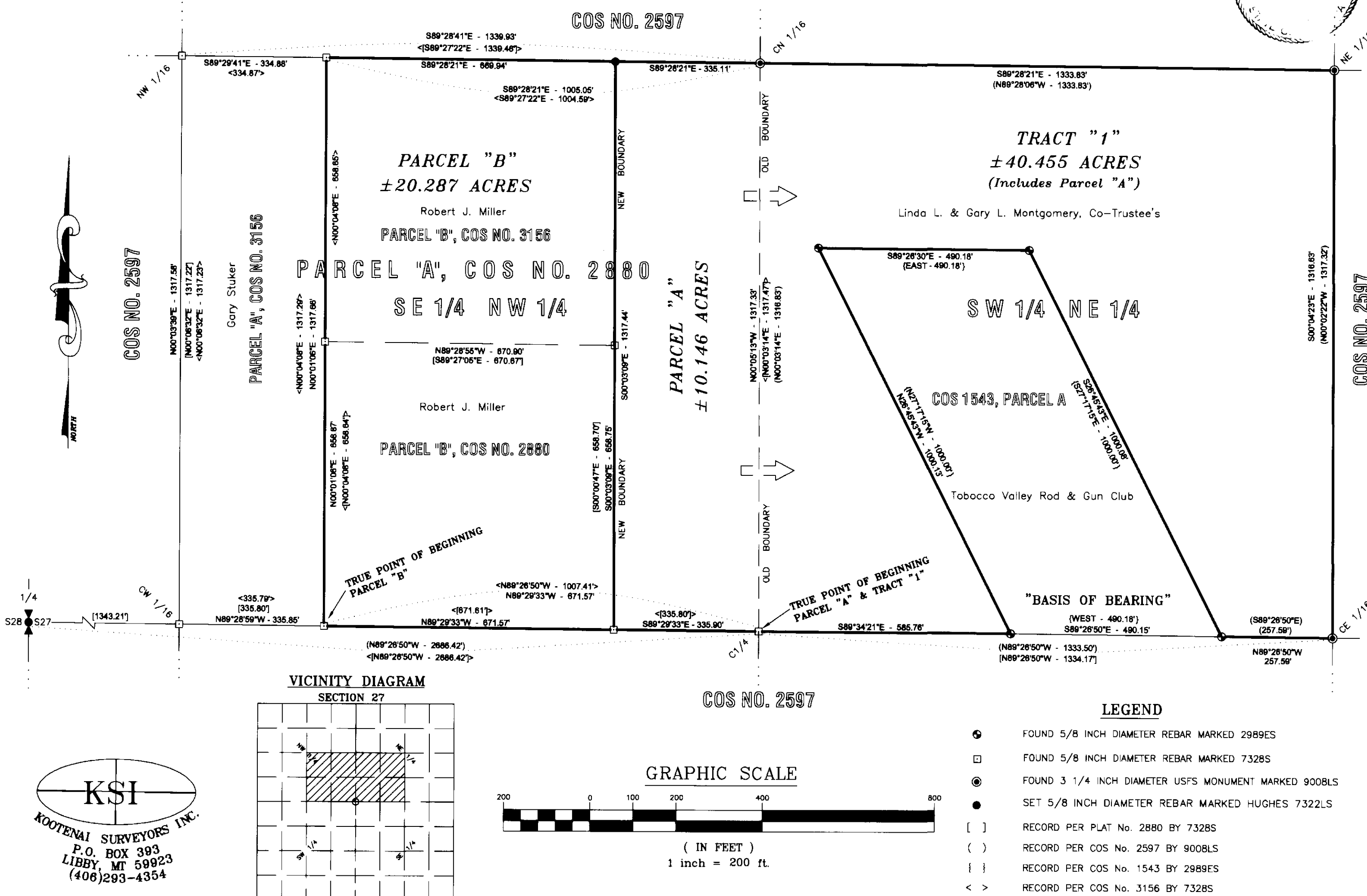
State of Montana, County of Lincoln, filed this 23rd day

of May, 2005, A.D. at 3:00 o'clock P.M.

County Clerk Recorder

Deputy

CERTIFICATE OF SURVEY NO. 3411 R.B.



KSI
KOOTENAI SURVEYORS INC.
P.O. BOX 393
LIBBY, MT 59923
(406)293-4354