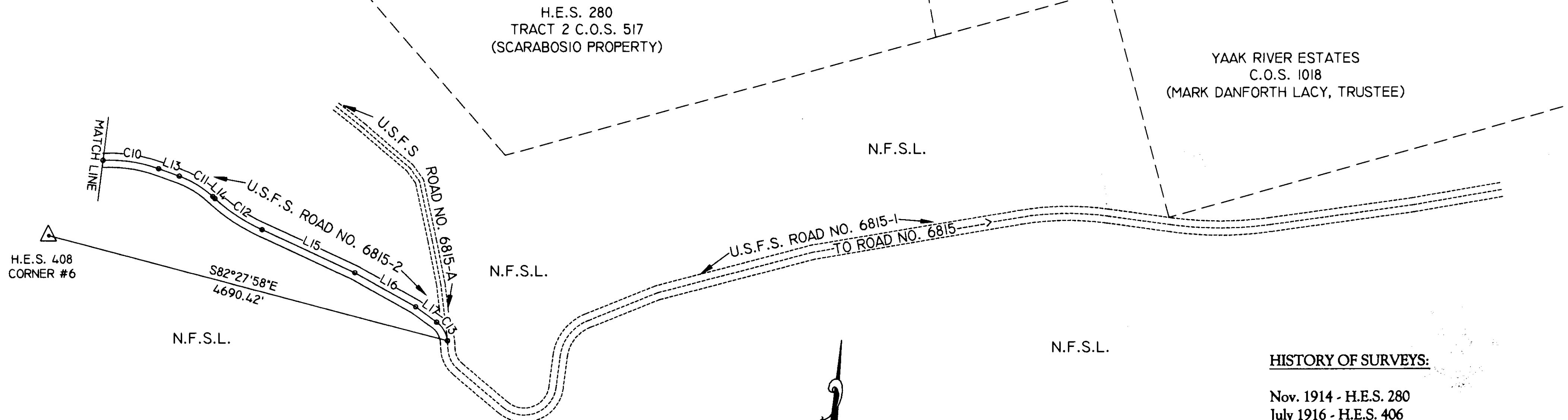
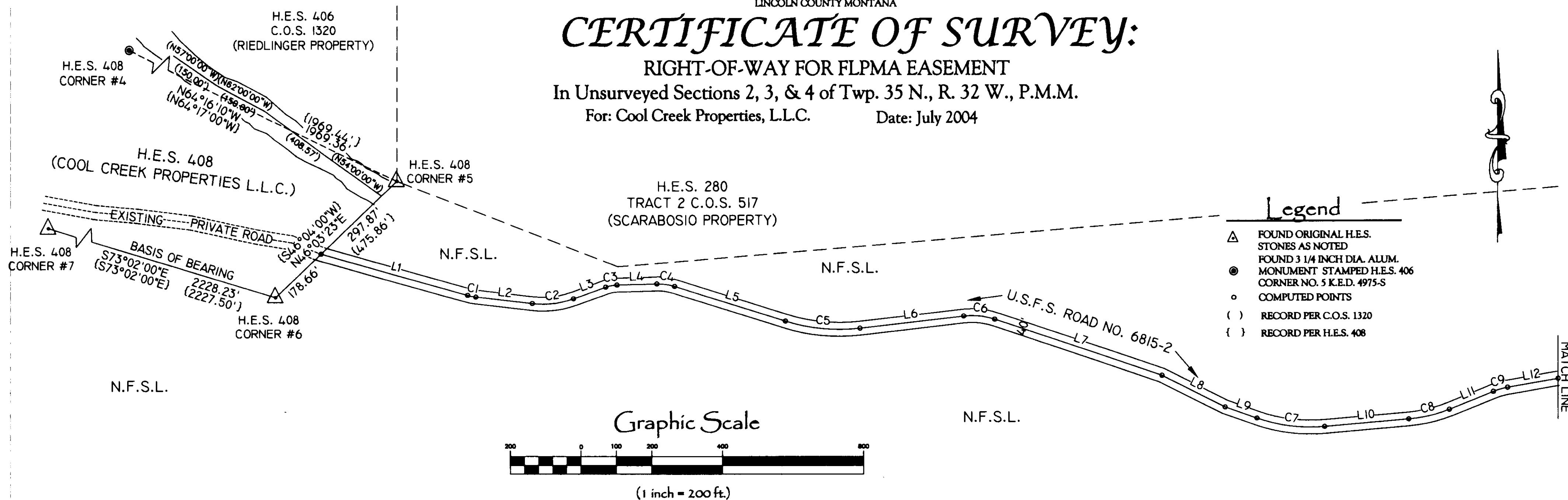


CERTIFICATE OF SURVEY:

RIGHT-OF-WAY FOR FLPMA EASEMENT
In Unserved Sections 2, 3, & 4 of Twp. 35 N., R. 32 W., P.M.M.
For: Cool Creek Properties, L.L.C. Date: July 2004



TOTAL LENGTH: 4736.39 FT.
TOTAL ACREAGE: 4.35 ACRES±

Davis Surveying Inc.
TROY, MONTANA (406)295-5441

METHOD OF SURVEY: 1/2 SEC. TOTAL STATION CLOSED TRAVERSE

SURVEYED BY: GEORGE CLARK & CHRIS ROBERTSON 09/18/03

DATE: 09/20/03

DRAWN BY: *gpr*

FILE: HES408.dwg

HISTORY OF SURVEYS:

Nov. 1914 - H.E.S. 280
July 1916 - H.E.S. 406
July 1916 - H.E.S. 408
Sept. 1978 - C.O.S. 517
May 1982 - C.O.S. 1018
Sept. 1984 - C.O.S. 1320

SHEET 1 OF 2
C.O.S. NO. 3324 Doc # 179517

CERTIFICATE OF SURVEY:

RIGHT-OF-WAY FOR FLPM EASEMENT

In Unsurveyed Sections 2, 3, & 4 of Twp. 35 N., R. 32 W., P.M.M.

For: Cool Creek Properties, L.L.C.

Date: July 2004

LINE TABLE

LINE	LENGTH	BEARING
L1	430.95	S74°08'51"E
L2	161.06	S83°10'08"E
L3	96.91	N69°41'06"E
L4	112.54	N88°20'39"E
L5	329.45	S72°10'26"E
L6	296.78	N83°17'05"E
L7	500.16	S71°12'50"E
L8	199.92	S63°18'54"E
L9	95.59	S70°18'54"E
L10	239.02	N84°53'08"E
L11	134.26	N67°55'46"E
L12	144.86	N80°00'03"E
L13	61.68	S77°18'54"E
L14	8.00	S54°14'54"E
L15	285.92	S72°30'54"E
L16	194.98	S68°03'49"E
L17	72.42	S61°11'58"E

CENTERLINE DESCRIPTION OF EASEMENT

A tract of land located in the Yaak Valley of Lincoln County, Montana, lying in Unsurveyed Sections 2, 3, & 4 of Twp. 35 N., R. 32 W., P.M.M., being a strip of land for access easement, 40.00 feet wide, lying 20.00 feet each side of the following described centerline:

Beginning at a computed point located on the east line of H.E.S. 408, which bears S46°03'23"W 297.87 feet from an original stone marking corner no. 5 of said H.E.S. 408; thence, the following thirty (30) courses, S74°08'51"E 430.95 feet to a computed point; thence, on the arc of a curve to the left, a distance of 23.62 feet, turning through a delta angle of 09°01'17", and having a radius of 150.00 feet, to a computed point; thence, S83°10'08"E 161.06 feet to a computed point; thence, on the arc of a curve to the left, a distance of 118.45 feet, turning through a delta angle of 27°08'46", and having a radius of 250.00 feet, to a computed point; thence, N69°41'06"E 96.91 feet to a computed point; thence, on the arc of a curve to the right, a distance of 32.57 feet, turning through a delta angle of 18°39'33", and having a radius of 100.00 feet, to a computed point; thence, N88°20'39"E 112.54 feet to a computed point; thence, on the arc of a curve to the right, a distance of 51.00 feet, turning through a delta angle of 19°28'55", and having a radius of 150.00 feet, to a computed point; thence, S72°10'26"E 329.45 feet to a computed point; thence, on the arc of a curve to the left, a distance of 214.16 feet, turning through a delta angle of 24°32'29", and having a radius of 500.00 feet, to a computed point; thence, N83°17'05"E 296.78 feet to a computed point; thence, on the arc of a curve to the right, a distance of 89.02 feet, turning through a delta angle of 25°30'05", and having a radius of 200.00 feet, to a computed point; thence, S71°12'50"E 500.16 feet to a computed point; thence, S63°18'54"E 199.92 feet to a computed point; thence, S70°18'54"E 95.59 feet to a computed point; thence, on the arc of a curve to the left, a distance of 194.78 feet, turning through a delta angle of 24°47'58", and having a radius of 450.00 feet, to a computed point; thence, N84°53'08"E 239.02 feet to a computed point; thence, on the arc of a curve to the left, a distance of 118.38 feet, turning through a delta angle of 16°57'22", and having a radius of 400.00 feet, to a computed point; thence, N67°55'46"E 134.26 feet to a computed point; thence, on the arc of a curve to the right, a distance of 42.14 feet, turning through a delta angle of 12°04'17", and having a radius of 200.00 feet, to a computed point; thence, N80°00'03"E 144.86 feet to a computed point; thence, on the arc of a curve to the right, a distance of 158.37 feet, turning through a delta angle of 22°41'03", and having a radius of 400.00 feet, to a computed point; thence, S77°18'54"E 61.68 feet to a computed point; thence, on the arc of a curve to the right, a distance of 110.71 feet, turning through a delta angle of 23°04'00", and having a radius of 275.00 feet, to a computed point; thence, S54°14'54"E 8.00 feet to a computed point; thence, on the arc of a curve to the left, a distance of 159.41, turning through a delta angle of 18°16'00", and having a radius of 500.00 feet, to a computed point; thence, S72°30'54"E 285.92 feet to a computed point; thence, S68°03'49"E 194.98 feet to a computed point; thence, S61°11'58"E 72.42 feet to a computed point; thence, on the arc of a curve to the right, a distance of 62.28 feet, turning through delta angle of 47°34'47", and having a radius of 75.00 feet, to a computed point which bears S82°27'58"E 4690.42 feet from a stone marking corner no. 6 of H.E.S. 408.

The side lines of the aforescribed easement are to be extended or shortened to meet and terminate at their angle points; said easement contains 4.35 acres more or less, and has a total length of 4739.39 feet.

CURVE TABLE

CURVE	LENGTH	RADIUS	DELTA
C1	23.62	150.00	09°01'17"
C2	118.45	250.00	27°08'46"
C3	32.57	100.00	18°39'33"
C4	51.00	150.00	19°28'55"
C5	214.16	500.00	24°32'29"
C6	89.02	200.00	25°30'05"
C7	194.78	450.00	24°47'58"
C8	118.38	400.00	16°57'22"
C9	42.14	200.00	12°04'17"
C10	158.37	400.00	22°41'03"
C11	110.71	275.00	23°04'00"
C12	159.41	500.00	18°16'00"
C13	62.28	75.00	47°34'47"

U.S. DEPARTMENT OF AGRICULTURE
FOREST SERVICE NORTHERN REGION
KOOTENAI NATIONAL FOREST
LINCOLN COUNTY, MONTANA

ROAD NO. 6814-1, 6814-2 &
ROAD NO. 6815-1, 6815-2
(COOL CREEK ROAD)

ACCEPTED FOR RIGHT OF WAY PURPOSES

For Jack H. Zearfoss II DATE: 9-27-04
BY: Jack H. Zearfoss II
U.S.F.S. STAFF OFFICER, TECH. SERVICES

CERTIFICATE OF SURVEYOR

STATE OF MONTANA

County of Lincoln

I Kenneth E. Davis, do hereby certify that I have performed the survey shown on the attached plat or that such a survey was performed under my direct supervision to my best knowledge and ability; that said survey is true and complete as shown and the monuments found and set occupy the position shown hereon.

Dated this 21st day of September, 2004 A.D.

Kenneth E. Davis Registered Land Surveyor No. 4975-S

CERTIFICATION OF EXAMINING LAND SURVEYOR:

Approved this 21st day of Sept 2004 A.D.

Wm. H. White 4130S
County Examiner Registered Land Surveyor No.

STATE OF MONTANA
COUNTY OF LINCOLN

Filed on this 27th day of September 2004 A.D. at 2:30
O'clock P m.

Carol R. Cummings by Francis Dennis
County Clerk and Recorder Deputy

SHEET 2 OF 2

C.O.S. NO. 3324 Doc 179517

Davis Surveying Inc.
TROY, MONTANA (406)295-5441

METHOD OF SURVEY: 1/2 SEC. TOTAL STATION CLOSED TRAVERSE

SURVEYED BY: GEORGE CLARK & CHRIS ROBERTSON 09/18/03
DATE: 09/20/03

DRAWN BY: gpr FILE: HES408.dwg