

RIGHT-OF-WAY PLAT:

RIGHT-OF-WAY FOR FLPMA EASEMENT

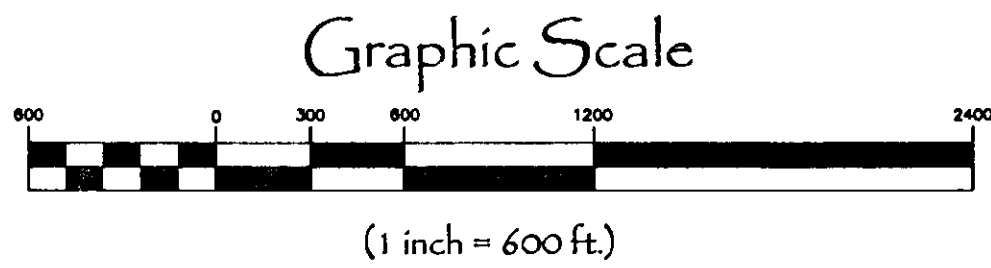
In Sections 4, 8, & 9 of Twp. 28 N., R. 33 W., and

Section 32 Twp. 29 N., R. 33 W., P.M.M.

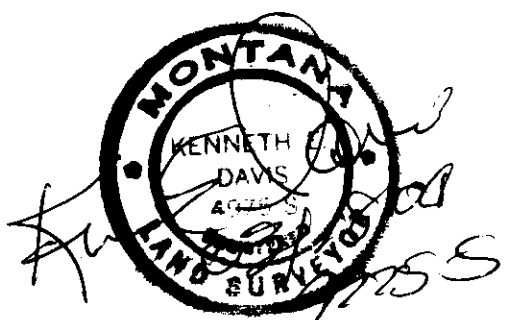
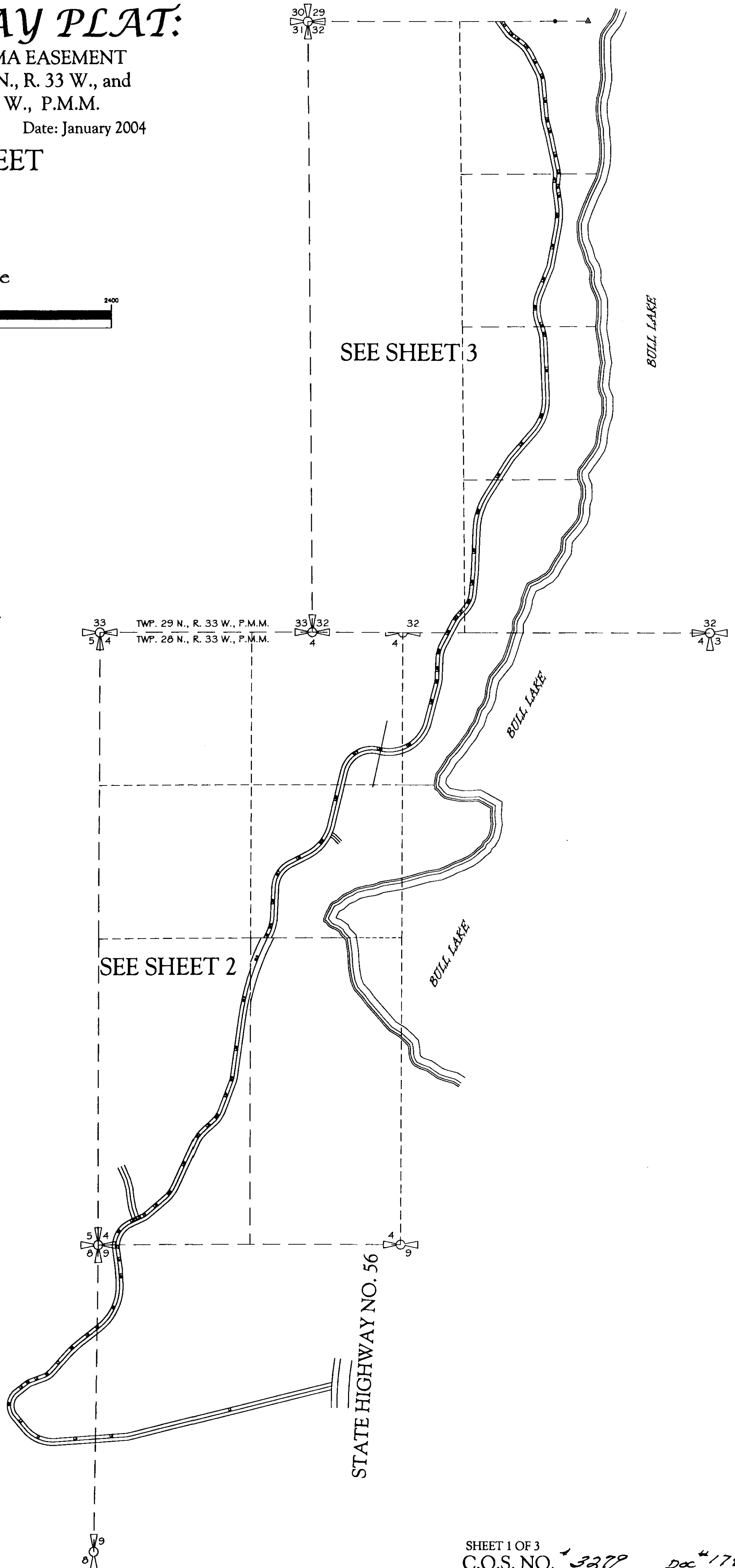
For: Bull Lake Estates L.L.C.

Date: January 2004

INDEX SHEET



METHOD OF SURVEY:
1/2 SEC. TOTAL STATION CLOSED TRAVERSE
SURVEYED BY:
GEORGE CLARK & RICK SHAVER, JANUARY 2004



Davis Surveying Inc.
TROY, MONTANA (406)295-5441

DATE: 01/02/04

DRAWN BY: ggr

FILE: t283304rc.dwg

SHEET 1 OF 3

C.O.S. NO. 3279 Doc # 1749-58

RIGHT-OF-WAY PLAT:

RIGHT-OF-WAY FOR FLPMA EASEMENT

In Sections 4, 8, & 9 of Twp. 28 N., R. 33 W., and

Section 32 Twp. 29 N., R. 33 W., P.M.M.

For: Bull Lake Estates L.L.C.

Date: January 2004

LINE TABLE		
LINE	LENGTH	BEARING
PRIVATE L1	1836.73	S76°13'35"W
PRIVATE L2	281.48	S86°12'43"W
L3	349.71	S86°12'43"W
L4	139.33	N39°30'45"W
L5	117.49	N52°13'16"E
L6	123.70	N70°17'49"E
L7	194.38	N41°50'08"E
L8	187.33	N52°18'04"E
PRIVATE L9	29.47	N52°18'04"E
PRIVATE L10	120.29	N03°09'12"W
PRIVATE L11	163.50	N07°48'03"W
L12	54.75	N65°27'25"E
L13	60.99	N65°27'25"E
L14	197.42	N50°03'53"E
L15	419.37	N24°56'43"E
L16	105.74	N48°09'37"E
L17	284.25	N20°42'31"E
L18	518.93	N07°50'33"E
L19	22.63	N27°53'17"E
L20	246.14	N02°35'40"E
L21	181.73	N62°52'39"E
L22	475.27	N13°27'09"E
L23	21.48	S77°39'44"E
L24	353.33	N14°23'30"E
L25	184.65	N02°07'08"E
L26	121.84	N27°57'40"E
L27	113.52	N27°57'40"E
L28	76.76	N42°28'25"E
L29	177.82	N05°36'10"E
L30	368.26	N02°12'21"E
L31	377.64	N32°40'01"E
L32	299.09	N40°59'16"E
L33	487.03	N02°21'17"W
L34	71.78	N18°00'14"W
L35	251.67	N21°58'17"E
L36	346.05	N10°34'49"E
L37	130.68	N08°01'50"W
L38	93.74	N04°40'24"E
L39	284.85	N11°46'34"W
L40	137.87	N14°24'43"W
L41	301.28	N05°13'19"W
L42	173.70	N27°12'20"W
L43	91.26	N53°21'04"W
L44	128.28	N37°04'04"W

Legend

- FOUND 3 1/4 INCH DIA. ALUM.
MONUMENT STAMPED K.E.D. 4975-S
 ○ COMPUTED POINTS
 ▲ FOUND 3 1/4 INCH DIA. BRASS BLM
M.C.
 ○ FOUND 5/8 INCH DIA. REBAR CAPPED
K.E.D. 4975-S
 ✕ FOUND 3 1/4 INCH DIA. BRASS BLM
MONUMENT
 ○ FOUND MONUMENTS AS NOTED
 () RECORD PER C.O.S. 1522
 [] RECORD PER GLO 1904
 { } RECORD PER GLO 1908
 < > RECORD PER BULL LAKE ESTATES
 (()) RECORD PER PLAT 375
 [[]] RECORD PER PLAT 87

CURVE TABLE			
CURVE	LENGTH	RADIUS	DELTA
C1	307.87	325.00	54°16'32"
C2	224.15	140.00	91°44'01"
C3	31.55	100.00	18°04'34"
C4	89.41	180.00	28°27'42"
C5	155.26	850.00	10°27'56"
PRIVATE C6	435.54	450.00	55°27'16"
PRIVATE C7	45.70	220.00	11°54'03"
C8	235.59	220.00	61°21'25"
C9	59.10	220.00	15°23'32"
C10	140.29	320.00	25°07'09"
C11	129.66	320.00	23°12'54"
C12	119.78	250.00	27°27'06"
C13	13.47	60.00	12°51'58"
C14	343.82	2107.15	09°20'56"
PRIVATE C15	393.39	2107.15	10°41'48"
C16	176.58	400.00	25°17'37"
C17	252.51	240.00	60°16'58"
C18	327.80	380.00	49°25'30"
C19	387.84	250.00	88°53'07"
C20	537.23	350.00	87°56'46"
C21	21.42	100.00	12°16'22"
C22	117.27	260.00	25°50'32"
C23	50.66	200.00	14°30'44"
C24	160.88	250.00	36°52'15"
C25	318.99	600.00	30°27'40"
C26	317.72	420.00	43°20'33"
C27	106.52	390.00	15°38'58"
C28	244.20	350.00	39°58'31"
C29	207.89	640.00	18°36'40"
C30	22.17	100.00	12°42'15"
C31	28.71	100.00	16°26'58"
C32	48.12	300.00	09°11'25"
C33	107.43	280.00	21°59'01"
C34	114.08	250.00	26°08'44"
C35	42.63	150.00	16°17'00"

HISTORY OF SURVEYS:

July 1950 - R/W Plat No. 375 Book 113 Page 42
 Aug. 1950 - Plat No. 87 Book 97 Page 294

NOTE: Shoreline shown was compiled from
 topographical maps and was not tied during this
 survey.

Graphic Scale

(1 inch = 300 ft.)

SHEET 2 OF 3

C.O.S. NO. 327

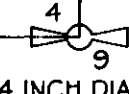
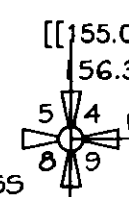
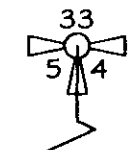
Doc 174950

Davis Surveying Inc.
 TROY, MONTANA (406)295-5441

DATE: 01/02/04

DRAWN BY: gpr

FILE: t283304rc.dwg



RIGHT-OF-WAY PLAT:**RIGHT-OF-WAY FOR FLPMA EASEMENT**

In Sections 4, 8, & 9 of Twp. 28 N., R. 33 W., and

Section 32 Twp. 29 N., R. 33 W., P.M.M.

For: Bull Lake Estates L.L.C.

Date: January 2004

CENTERLINE DESCRIPTION OF EASEMENT

A tract of land located in the Bull River Valley of Lincoln County, Montana, lying in Sections 4, 8, & 9 of Twp. 28 N., R. 33 W., and Section 32 of Twp. 29 N., R. 33 W., P.M.M., being a strip of land for access easement 60.00 feet wide, measured 30.00 feet at right angles from each side of the following described centerline:

Beginning at a computed point located on the west right of way line of State Highway No. 56, from which said point bears N55°36'42"E 2519.59 feet from a 3 1/4 inch dia. alum. U.S.F.S. monument marking the west quarter (1/4) corner of Section 9 Twp. 28 N., R. 33 W., P.M.M., thence, from true point of beginning, through private property, S76°13'35"W 1836.73 feet to a computed point; thence, S86°12'43"W 281.48 feet to a computed point located on the west section line of said Section 9, which bears N00°51'22"E 967.27 feet from a 3 1/4 inch dia. alum. U.S.F.S. monument marking the west 1/4 corner of said Section 9; thence, commencing through U.S.F.S. property, into Section 8, S86°12'43"W 349.71 feet to a computed point; thence, on the arc of a curve to the right, a distance of 307.87 feet, turning through a delta angle of 54°16'32", and having a radius of 325.00 feet, to a computed point; thence, N39°30'45"W 139.33 feet to a computed point; thence, on the arc of a curve to the right, a distance of 224.15 feet, turning through a delta angle of 91°44'01", and having a radius of 140.00 feet, to a computed point; thence, N52°13'16"E 117.49 feet to a computed point; thence, on the arc of a curve to the right, a distance of 31.55 feet, turning through a delta angle of 18°04'34", and having a radius of 100.00 feet, to a computed point; thence, N70°17'49"E 123.70 feet to a computed point; thence, on the arc of a curve to the left, a distance of 89.41 feet, turning through a delta angle of 28°27'42", and having a radius of 180.00 feet, to a computed point; thence, N41°50'08"E 194.38 feet to a computed point; thence, on the arc of a curve to the right, a distance of 155.26 feet, turning through a delta angle of 10°27'56", and having a radius of 850.00 feet to a computed point; thence, N52°18'04"E 187.33 feet to a computed point located on the west line of said Section 9 which bears S00°51'22"W 726.25 feet from a 3 1/4 inch dia. brass BLM monument marking the north east corner of said Section 9, thence, commencing through private property, into said Section 9, N52°18'04"E 29.47 feet to a computed point; thence, on the arc of a curve to the left, a distance of 435.54 feet, turning through a delta angle of 55°27'16", and having a radius of 450.00 feet, to a computed point; thence, N03°09'12"W 120.29 feet to a computed point; thence, N07°48'03"W 163.50 feet to a computed point; thence, on the arc of a curve to the right, a distance of 45.70 feet, turning through a delta angle of 11°54'03", and having a radius of 220.00 feet, to a computed point located on the north line of said Section 9, which bears N89°52'20"E 156.32 feet from a 3 1/4 inch dia. brass BLM monument marking the NE corner of said Section 9; thence, continuing on the arc of a curve to the right commencing into Section 4 across U.S.F.S. property, a distance of 235.59 feet, turning through a delta angle of 61°21'25", and having a radius of 220.00 feet, to a computed point; thence, N65°27'25"E 54.75 feet to a computed point located at the intersection of U.S. Forest Road No. 398 and 8019; thence, N65°27'25"E 60.99 feet to a computed point; thence, on the arc of a curve to the left, a distance of 59.10 feet, turning through a delta angle of 15°23'32", and having a radius of 220.00 feet, to a computed point; thence, N50°03'53"E 197.42 feet to a computed point; thence, on the arc of a curve to the left, a distance of 140.29 feet, turning through a delta angle of 25°07'09", and having a radius of 320.00 feet, to a computed point; thence, N24°56'43"E 419.37 feet to a computed point; thence, on the arc of a curve to the right, a distance of 129.66 feet, turning through a delta angle of 23°12'54", and having a radius of 320.00 feet, to a computed point; thence, N48°09'37"E 105.74 feet to a computed point; thence, on the arc of a curve to the left, a distance of 119.78 feet, turning through a delta angle of 27°27'06", and having a radius of 250.00 feet, to a computed point; thence, N20°42'31"E 284.25 feet to a computed point; thence, on the arc of a curve to the left, a distance of 13.47 feet, turning through a delta angle of 12°51'58", and having a radius of 60.00 feet, to a computed point; thence, N07°50'33"E 518.93 feet to a computed point; thence, on the arc of a curve to the right, a distance of 343.82 feet, turning through a delta angle of 09°20'56", and having a radius of 2107.15 feet, to a computed point located on the west line of the E1/2 SW 1/4 of Section 4, which bears S00°05'46"W 362.04 feet from a 3 1/4 inch dia. alum. monument stamped K.E.D. 4975-S and marks the C-W 1/16th of said Section 4; thence, continuing on the arc of a curve to the right through private property, a distance of 393.39 feet, turning through a delta angle of 10°41'48", and having a radius of 2107.15 feet to a computed point located on the north line of said E1/2 SW 1/4 which bears N89°42'11"E 149.97 feet from a 3 1/4 inch dia. alum. cap stamped K.E.D. 4975-S and marks the C-W 1/16th of said Section 4;

U.S. DEPARTMENT OF AGRICULTURE
FOREST SERVICE NORTHERN REGION
KOOTENAI NATIONAL FOREST
LINCOLN COUNTY, MONTANA

ROAD NO. 398 & 8019
(ROSS CREEK ROAD)

ACCEPTED FOR RIGHT OF WAY PURPOSES

BY:

Frank Vitale

DATE: 3/2/04

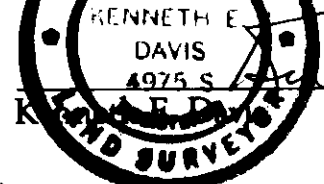
U.S.F.S. STAFF OFFICER, TECH. SERVICES

CERTIFICATE OF SURVEYOR

STATE OF MONTANA
County of Lincoln

I Kenneth E. Davis, do hereby certify that I have performed the survey shown on the attached plat or that such a survey was performed under my direct supervision to my best knowledge and ability; that said survey is true and complete as shown and the monuments found and set occupy the position shown hereon.

Date this 15 day of MARCH, 2004 A.D.



Registered Land Surveyor No. 4975-S

CERTIFICATION OF EXAMINING LAND SURVEYOR:

Approved this 15 day of MARCH, 2004 A.D.

County Examiner

Registered Land Surveyor No. 4975-S

STATE OF MONTANA
COUNTY OF LINCOLN

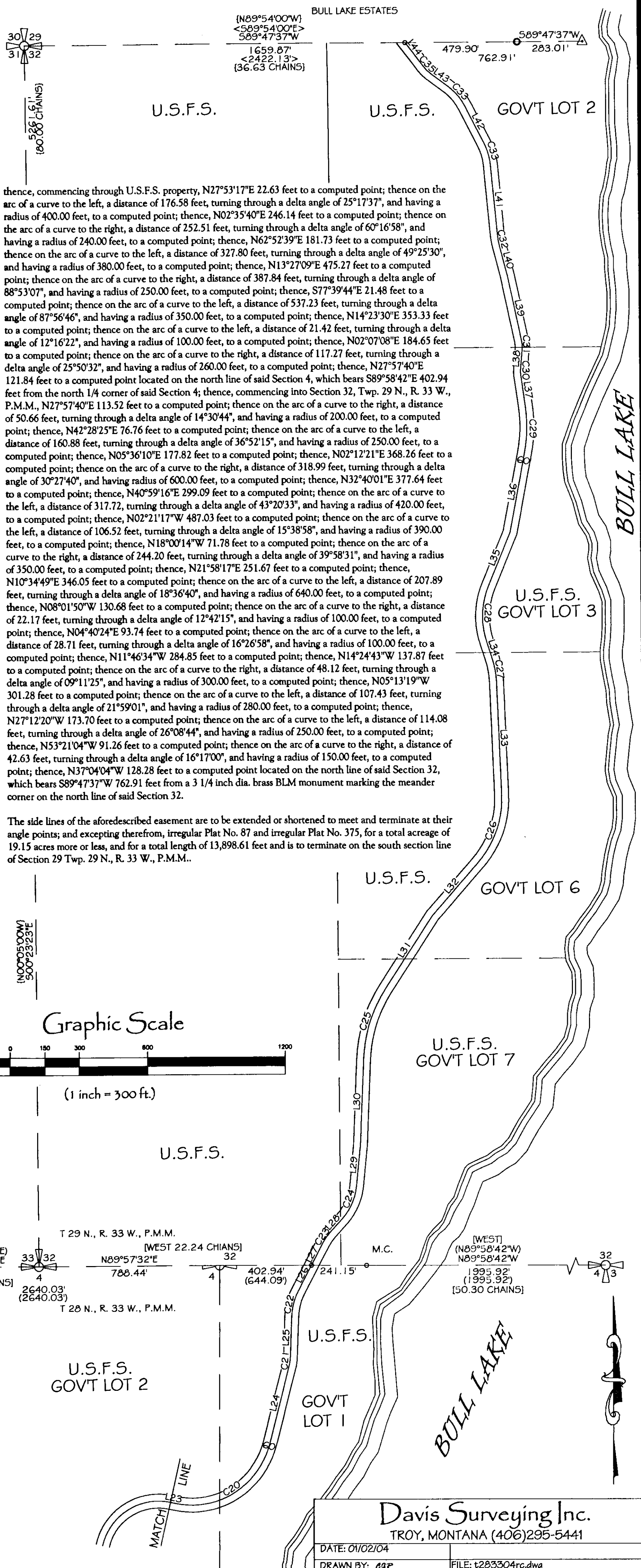
Filed on this 16 day of March, 2004 A.D. at 1:15
O'clock P.M.

Coral A. Cummings
County Clerk and Recorder

by

Deputy

SHEET 3 OF 3

C.O.S. NO. 3379PL 174958

thence, commencing through U.S.F.S. property, N27°53'17"E 22.63 feet to a computed point; thence on the arc of a curve to the left, a distance of 176.58 feet, turning through a delta angle of 25°17'37", and having a radius of 400.00 feet, to a computed point; thence, N02°35'40"E 246.14 feet to a computed point; thence on the arc of a curve to the right, a distance of 252.51 feet, turning through a delta angle of 60°16'58", and having a radius of 240.00 feet, to a computed point; thence, N62°52'39"E 181.73 feet to a computed point; thence, on the arc of a curve to the left, a distance of 327.80 feet, turning through a delta angle of 49°25'30", and having a radius of 380.00 feet, to a computed point; thence, N13°27'09"E 475.27 feet to a computed point; thence on the arc of a curve to the right, a distance of 387.84 feet, turning through a delta angle of 88°53'07", and having a radius of 250.00 feet, to a computed point; thence, S77°39'44"E 21.48 feet to a computed point; thence on the arc of a curve to the left, a distance of 537.23 feet, turning through a delta angle of 87°56'46", and having a radius of 350.00 feet, to a computed point; thence, N14°23'30"E 353.33 feet to a computed point; thence on the arc of a curve to the left, a distance of 21.42 feet, turning through a delta angle of 12°16'22", and having a radius of 100.00 feet, to a computed point; thence, N02°07'08"E 184.65 feet to a computed point; thence on the arc of a curve to the right, a distance of 117.27 feet, turning through a delta angle of 25°50'32", and having a radius of 260.00 feet, to a computed point; thence, N27°57'40"E 121.84 feet to a computed point located on the north line of said Section 4, which bears S89°58'42"E 402.94 feet from the north 1/4 corner of said Section 4; thence, commencing into Section 32, Twp. 29 N., R. 33 W., P.M.M., N27°57'40"E 113.52 feet to a computed point; thence on the arc of a curve to the right, a distance of 50.66 feet, turning through a delta angle of 14°30'44", and having a radius of 200.00 feet, to a computed point; thence, N42°28'25"E 76.76 feet to a computed point; thence on the arc of a curve to the left, a distance of 160.88 feet, turning through a delta angle of 36°52'15", and having a radius of 250.00 feet, to a computed point; thence, N05°36'10"E 177.82 feet to a computed point; thence, N02°12'21"E 368.26 feet to a computed point; thence on the arc of a curve to the right, a distance of 318.99 feet, turning through a delta angle of 30°27'40", and having radius of 600.00 feet, to a computed point; thence, N32°40'01"E 377.64 feet to a computed point; thence, N40°59'16"E 299.09 feet to a computed point; thence on the arc of a curve to the left, a distance of 317.72, turning through a delta angle of 43°20'33", and having a radius of 420.00 feet, to a computed point; thence, N02°21'17"W 487.03 feet to a computed point; thence on the arc of a curve to the left, a distance of 106.52 feet, turning through a delta angle of 15°38'58", and having a radius of 390.00 feet, to a computed point; thence, N18°00'14"W 71.78 feet to a computed point; thence on the arc of a curve to the right, a distance of 244.20 feet, turning through a delta angle of 39°58'31", and having a radius of 350.00 feet, to a computed point; thence, N21°58'17"E 251.67 feet to a computed point; thence, N10°34'49"E 346.05 feet to a computed point; thence on the arc of a curve to the left, a distance of 207.89 feet, turning through a delta angle of 18°36'40", and having a radius of 640.00 feet, to a computed point; thence, N08°01'50"W 130.68 feet to a computed point; thence on the arc of a curve to the right, a distance of 22.17 feet, turning through a delta angle of 12°42'15", and having a radius of 100.00 feet, to a computed point; thence, N04°40'24"E 93.74 feet to a computed point; thence on the arc of a curve to the left, a distance of 28.71 feet, turning through a delta angle of 16°26'58", and having a radius of 100.00 feet, to a computed point; thence, N11°46'34"W 284.85 feet to a computed point; thence, N14°24'43"W 137.87 feet to a computed point; thence on the arc of a curve to the right, a distance of 48.12 feet, turning through a delta angle of 09°11'25", and having a radius of 300.00 feet, to a computed point; thence, N05°13'19"W 301.28 feet to a computed point; thence on the arc of a curve to the left, a distance of 107.43 feet, turning through a delta angle of 21°59'01", and having a radius of 280.00 feet, to a computed point; thence, N27°12'20"W 173.70 feet to a computed point; thence on the arc of a curve to the left, a distance of 114.08 feet, turning through a delta angle of 26°08'44", and having a radius of 250.00 feet, to a computed point; thence, N53°21'04"W 91.26 feet to a computed point; thence on the arc of a curve to the right, a distance of 42.63 feet, turning through a delta angle of 16°17'00", and having a radius of 150.00 feet, to a computed point; thence, N37°04'04"W 128.28 feet to a computed point located on the north line of said Section 32, which bears S89°47'37"W 762.91 feet from a 3 1/4 inch dia. brass BLM monument marking the meander corner on the north line of said Section 32.

The side lines of the aforescribed easement are to be extended or shortened to meet and terminate at their angle points; and excepting therefrom, irregular Plat No. 87 and irregular Plat No. 375, for a total acreage of 19.15 acres more or less, and for a total length of 13,898.61 feet and is to terminate on the south section line of Section 29 Twp. 29 N., R. 33 W., P.M.M..

Graphic Scale

(1 inch = 300 ft.)

U.S.F.S. GOV'T LOT 2

U.S.F.S.

GOV'T LOT 1

BULL LAKE

Davis Surveying Inc.
TROY, MONTANA (406)295-5441

DATE: 01/02/04

DRAWN BY: egr

FILE: t283304rc.dwg