

CERTIFICATE OF SURVEY: COURT ORDERED EASEMENT SURVEY

S 1/2 NW 1/4, of Section 29 Twp. 36N., R. 27W., P.M.M.
For: Attorneys concerning this case: Date: January 2001
Bill Douglas
Charles Evans

LINE TABLE		
LINE	LENGTH	BEARING
L1	58.05	N81°00'36"W
L2	65.90	N66°03'02"W
L3	109.04	N83°58'13"W
L4	135.35	N76°54'29"W
L5	47.94	N83°18'36"W
L6	14.48	S63°37'52"W
L7	154.21	S79°57'05"W
L8	46.62	S89°55'17"W
L9	75.20	S60°43'27"W
L10	74.11	S87°34'13"W
L11	24.38	N43°58'19"W
L12	67.77	N01°06'29"W
L13	106.05	N15°17'35"W
L14	115.89	N07°05'03"W
L15	102.83	N16°34'52"W
L16	147.39	N11°03'32"W
L17	153.00	N08°07'18"W
L18	162.03	N06°18'48"W
L19	118.65	N07°13'48"W
L20	150.71	N07°50'23"E
L21	31.67	N41°57'52"E

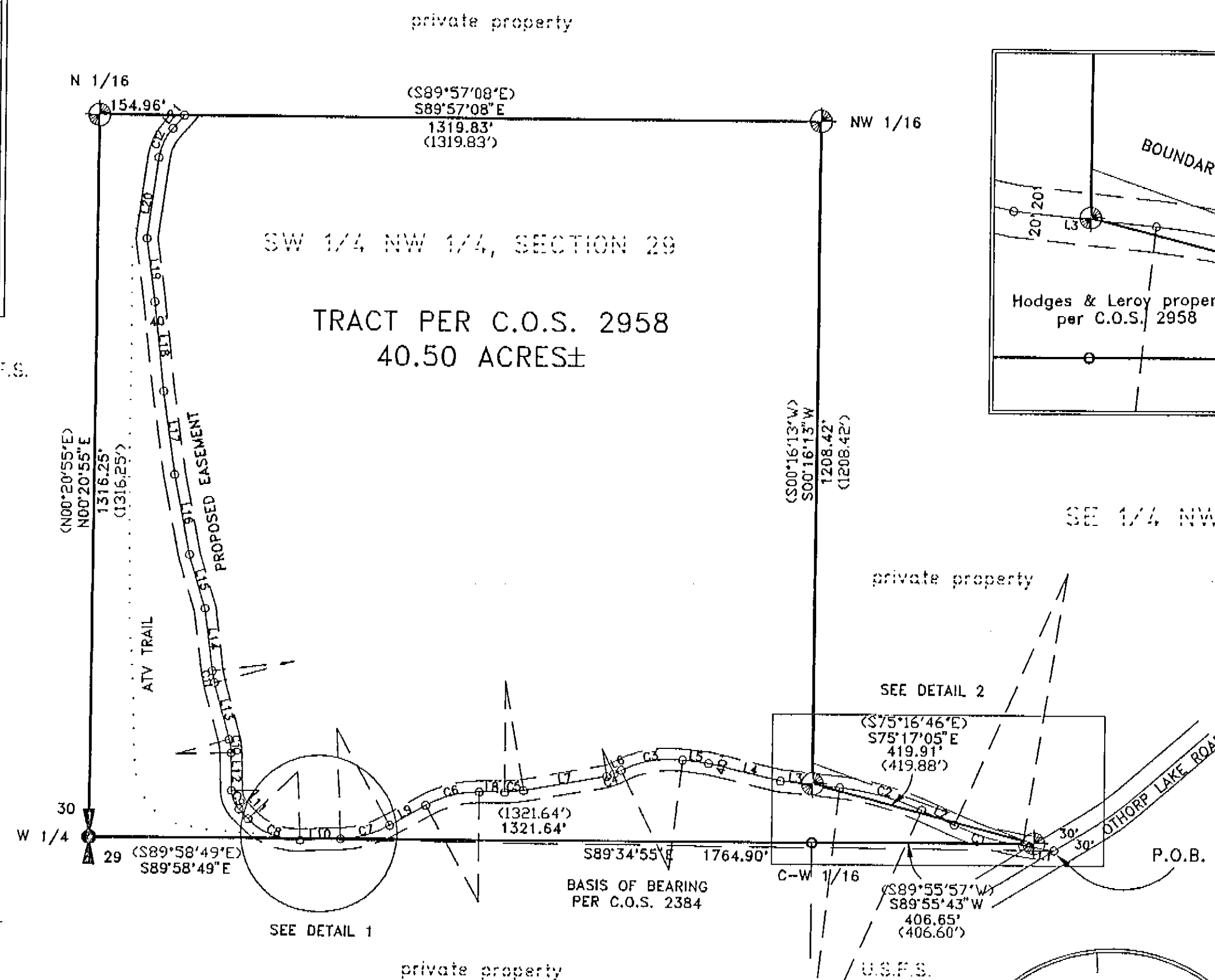
CURVE TABLE			
CURVE	LENGTH	RADIUS	DELTA
C1	130.54	500.00	14°57'34"
C2	156.38	500.00	17°55'10"
C3	115.40	200.00	33°03'32"
C4	14.24	50.00	16°19'13"
C5	34.80	200.00	09°58'12"
C6	101.92	200.00	29°11'49"
C7	93.71	200.00	26°50'45"
C8	105.72	125.00	48°27'28"
C9	37.41	50.00	42°51'50"
C10	24.76	100.00	14°11'06"
C11	21.49	150.00	08°12'33"
C12	59.56	100.00	34°07'29"

LEGEND

- ⊙ FOUND 5/8 INCH DIAMETER REBAR WITH A 1 1/4 INCH DIAMETER PLASTIC CAP STAMPED KED 4975-S
- FOUND 2 1/2 INCH DIA. ALUMINUM PIPE WITH A 3 1/4 INCH DIA. ALUMINUM CAP STAMPED USDA C-W-1/16 S29 9008 LS
- ⊙ FOUND 2 1/2 INCH DIA. IRON PIPE WITH A 3 1/4 INCH DIA. BLM BRASS CAP
- COMPUTED POINTS
- (.) RECORD PER C.O.S. 2958

DAVIS SURVEYING INC.
TROY, MONTANA (406) 295-5441

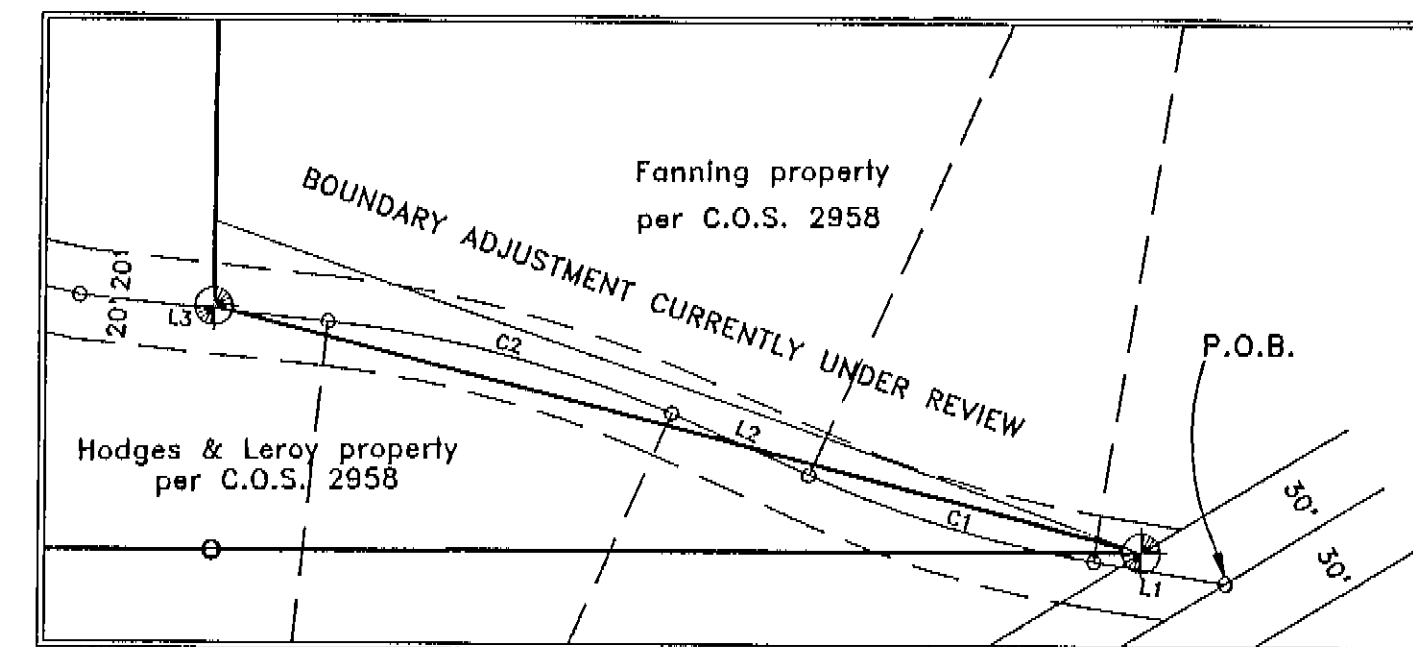
DATE: 01-10-01 REV:
DRAWN BY: CJR FILE: T362729E.DWG



GRAPHIC SCALE



(IN FEET)
1 Inch = 200 ft.

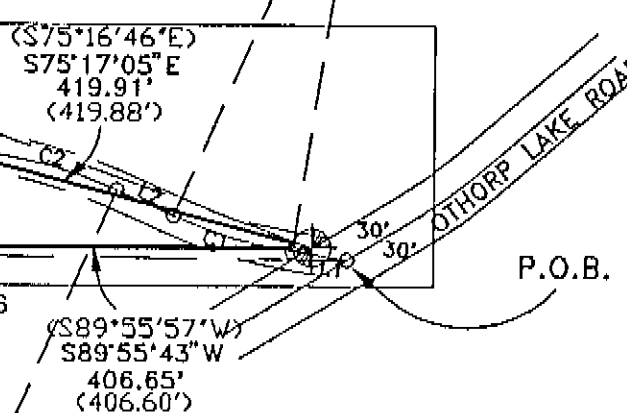


DETAIL 2
NOT TO SCALE

SE 1/4 NW 1/4, SECTION 29

private property

SEE DETAIL 2



DETAIL 1
NOT TO SCALE

PURPOSE OF SURVEY

The purpose of this survey is to establish an access easement per court order.

CERTIFICATE OF SURVEYOR

STATE OF MONTANA
County of Lincoln

I, Kenneth E. Davis, a registered land surveyor, do hereby certify that I have performed the attached survey, or that such a survey was performed under my supervision to my best knowledge and ability; that said survey is true and complete, and the monuments found and set occupy the positions shown hereon.

Dated this 10th day of January, 2001 A.D.

Kenneth E. Davis, Registered Land Surveyor No. 4975-S

SHEET 1 OF 2 CERTIFICATE OF SURVEY NO. 5000

Doc. #151367

CERTIFICATE OF SURVEY: COURT ORDERED EASEMENT SURVEY

S 1/2, NW 1/4 of Section 29 Twp. 36N., R. 27W., P.M.M.
For: Attorneys concerning this case: Date: January 2001
Bill Douglas
Charles Evans

DESCRIPTION OF EASEMENT

A strip of land located in the S 1/2, NW 1/4 of Section 29, Twp. 36N., R. 27W., P.M.M., for private access purposes, measuring 40.00 feet wide, lying 20.00 feet on each side of the following described centerline:

Beginning at a computed point located on the centerline of Othorp Lake Road which bears S89°34'55"E 1764.90 feet from a 3 1/4 inch dia. BLM brass capped monument marking the W 1/4 corner of Section 29; thence, from true point of beginning, the following thirty-three (33) courses: thence, N81°00'36"W 58.05 feet to a computed point; thence, along the arc of a curve to the right a distance of 130.54 feet, turning through a delta angle of 14°57'34", having a radius of 500.00 feet, to a computed point; thence, N66°03'02"W 65.90 feet to a computed point; thence, on the arc of a curve to the left a distance of 156.38 feet, turning through a delta angle of 17°55'10", having a radius of 500.00 feet, to a computed point; thence, N83°58'13"W 109.04 feet to a computed point; thence, N76°54'29"W 135.35 feet to a computed point; thence, N83°18'36"W 47.94 feet to a computed point; thence, on the arc of a curve to the left a distance of 115.40 feet, turning through a delta angle of 33°03'32", having a radius of 200.00 feet, to a computed point; thence, S63°37'52"W 14.48 feet to a computed point; thence, on the arc of a curve to the right a distance of 14.24 feet, turning through a delta angle of 16°19'13", having a radius of 50.00 feet, to a computed point; thence, S79°57'05"W 154.21 feet to a computed point; thence, on the arc of a curve to the right a distance of 34.80 feet, turning through a delta angle of 09°58'12", having a radius of 200.00 feet, to a computed point; thence, S89°55'17"W 46.62 feet to a computed point; thence, on the arc of a curve to the left a distance of 101.92 feet, turning through a delta angle of 29°11'49", having a radius of 200.00 feet, to a computed point; thence, S60°43'27"W 75.20 feet to a computed point; thence, on the arc of a curve to the right a distance of 93.71 feet, turning through a delta angle of 26°50'45", having a radius of 200.00 feet, to a computed point; thence, S87°34'13"W 74.11 feet to a computed point; thence, on the arc of a curve to the right a distance of 105.72 feet, turning through a delta angle of 48°27'28", having a radius of 125.00 feet, to a computed point; thence, N43°58'19"W 24.38 feet to a computed point; thence, on the arc of a curve to the right a distance of 37.41 feet, turning through a delta angle of 42°51'50", having a radius of 50.00 feet, to a computed point; thence, N01°06'29"W 67.77 feet to a computed point; thence, on the arc of a curve to the left a distance of 24.76 feet, turning through a delta angle of 14°11'06", having a radius of 100.00 feet, to a computed point; thence, N15°17'35"W 106.05 feet to a computed point; thence, on the arc of a curve to the right a distance of 21.49 feet, turning through a delta angle of 08°12'33", having a radius of 150.00 feet, to a computed point; thence, N07°05'03"W 115.89 feet to a computed point; thence, N16°34'52"W 102.83 feet to a computed point; thence, N11°03'32"W 147.39 feet to a computed point; thence, N08°07'18"W 153.00 feet to a computed point; thence, N06°18'48"W 162.03 feet to a computed point; thence, N07°13'48"W 118.65 feet to a computed point; thence, N07°50'23"E 150.71 feet to a computed point; thence, on the arc of a curve to the right a distance of 59.56 feet, turning through a delta angle of 34°07'29", having a radius of 100.00 feet, to a computed point; thence, N41°57'52"E 31.67 feet to a computed point located on the north property line of that tract as shown on C.O.S. 2958.

The side lines of the aforescribed 40.00' foot easement to be extended and shortened to meet at the angle points and to terminate at said north line of that tract as shown on C.O.S. 2958.

EXAMINED AND APPROVED FOR LINCOLN COUNTY BY:

STATE OF MONTANA
COUNTY OF LINCOLN

Filed on this 11th day of Feb., 2001 A.D. at 12:29
O'clock p.m.

Donald M. Jennings by DR-Valero
County Clerk and Recorder Deputy

DAVIS SURVEYING INC.
TROY, MONTANA (406) 295-5441

DATE: 01-10-01	REV:
DRAWN BY: CJR	FILE: T362729E.DWG

SHEET 2 OF 2 CERTIFICATE OF SURVEY NO. 3000

DOC.# 151307