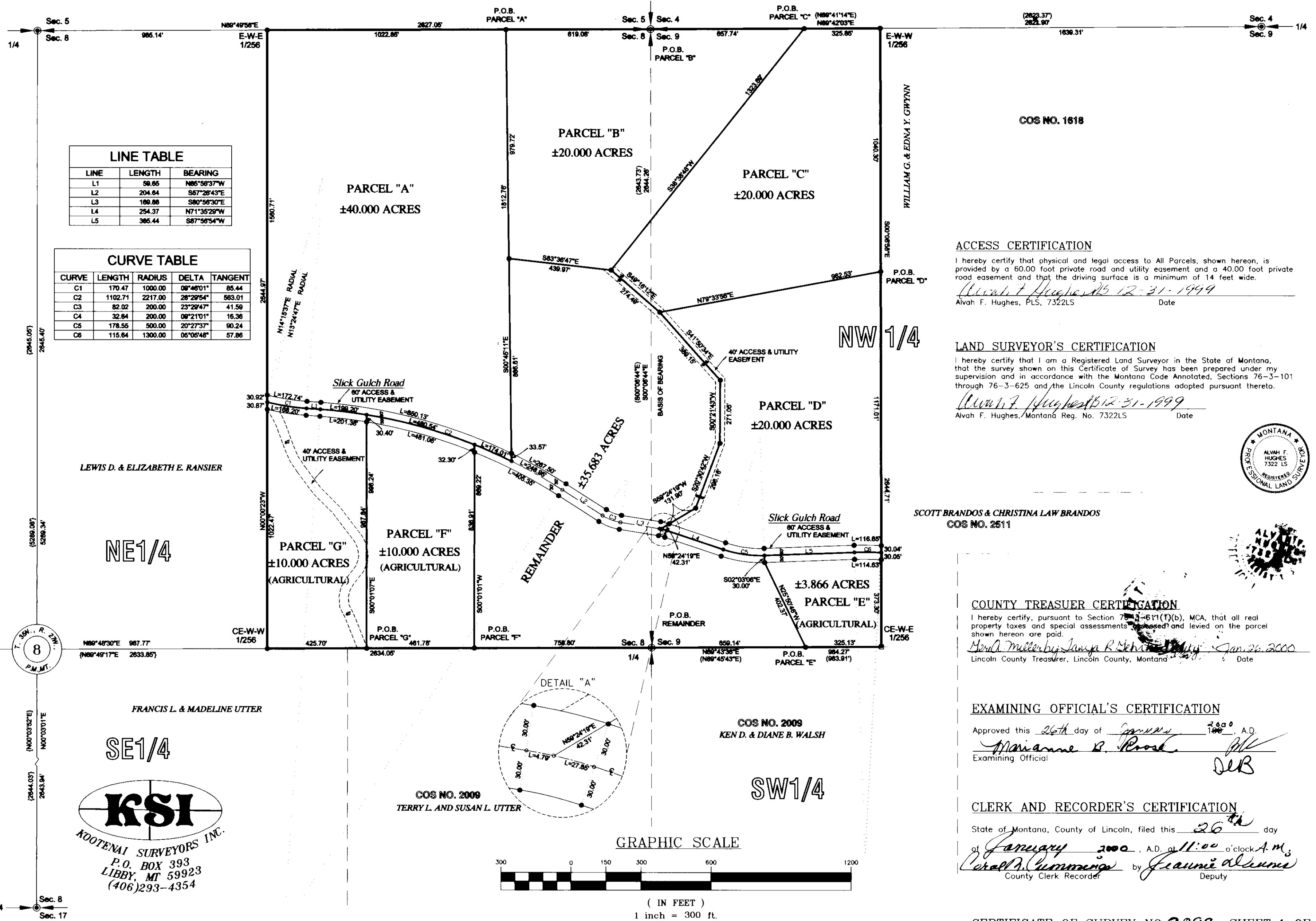


CERTIFICATE OF SURVEY

- FAMILY TRANSFER -
NE 1/4 OF SECTION 8 & NW 1/4 OF SECTION 9, T.35N., R.27W., P.M., MT.
LINCOLN COUNTY, MONTANA
FOR: ARLENE ANDERSON DECEMBER 1999
TOTAL ACREAGE = 159.549 ACRES±

LEGEND

- FOUND 3 1/4 INCH DIAMETER BLM BRASS CAP
- COMPUTED POINT ONLY
- SET 5/8 INCH DIAMETER REBAR WITH A PLASTIC CAP STAMPED HUGHES 7322-LS
- FOUND 5/8 INCH DIAMETER REBAR WITH A PLASTIC CAP STAMPED 7328-S
- () RECORD PER COS NO. 2511, D. MARQUARDT, 7328-LS
- { } RECORD PER COS NO. 1618, P. HELPS, 4739-LS



DESCRIPTION PARCEL "A"

A tract of land south of Eureka, Montana, Lincoln County, in the NE 1/4 of Section 8, T.35N. R.27W., P.M., MT., containing ±40.000 acres, more particularly described as follows:

Commencing at a 3 1/4 inch diameter BLM brass monument, being the Northeast corner of said Section 8; Thence along the north line of said Section 8, S89°49'58"W, a distance of 819.06 feet to a set 5/8 inch diameter rebar with a plastic cap marked Hughes 7322-LS, and lying on the northerly section line, being the TRUE POINT OF BEGINNING; Thence continuing along the said north line of Section 8, S89°49'58"W, a distance of 1022.85 feet to a set 5/8 inch rebar with a plastic cap marked Hughes 7322-LS, being the East-West-East 1/256 corner of said Section 8; Thence S00°00'23"E, a distance of 1560.71 feet to a set 5/8 inch diameter rebar with a plastic cap stamped Hughes 7322-LS, lying on the northerly right-of-way line of a 60.00 foot private road and utility easement known as Slick Gulch Road; Thence S00°00'23"E, a distance of 30.92 feet to an unmarked computed point, being the centerline of said 60.00 foot private road and utility easement; Thence continuing along said centerline and along a non-tangent curve to the left, a length of 170.47 feet, having a radius of 1000.00 feet, turning through a delta angle of 09°46'01" to a unmarked computed point; Thence continuing along said centerline S85°56'37"E, a distance of 59.65 feet to a computed point; Thence continuing along said centerline and along the arc of a curve to the right, a length of 853.75 feet, having a radius of 2217.00 feet, turning through a delta angle of 22°03'51" to a unmarked computed point; Thence leaving said centerline N00°45'11"W, a distance of 33.57 feet to a set 5/8 inch diameter rebar with a plastic cap marked Hughes 7322-LS, lying on the northerly right-of-way of said 60.00 private road and utility; Thence N00°45'11"W, a distance of 1812.76 feet to the TRUE POINT OF BEGINNING and containing ±40.000 acres.

Subject to a 60.00 foot wide private access road and utility easement, known as Slick Gulch Road, and together with all appurtenant easements of record or implied.

DESCRIPTION PARCEL "B"

A tract of land south of Eureka, Montana, Lincoln County, in the NE 1/4 of Section 8 and in the NW 1/4 of Section 9, T.35N. R.27W., P.M., MT., containing ±20.000 acres, more particularly described as follows:

Commencing at a 3 1/4 inch diameter BLM brass monument, being the Northeast section corner of said Section 8 and the TRUE POINT OF BEGINNING; Thence along the north line of said Section 8, S89°49'58"W, a distance of 619.06 feet to a set 5/8 inch diameter rebar with a plastic cap marked Hughes 7322-LS, and lying on said northerly section line; Thence S00°45'11"E, a distance of 979.72 feet to a set 5/8 inch rebar with a plastic cap marked Hughes 7322-LS; Thence S83°36'47"E, a distance of 439.97 feet to a set 5/8 inch diameter rebar with a plastic cap stamped Hughes 7322-LS; Thence N38°38'48"E, a distance of 1323.69 feet to a set 5/8 inch diameter rebar with a plastic cap marked Hughes 7322-LS, lying on northerly line of said Section 9; Thence along said northerly line of said Section 9 S89°42'03"W, a distance of 657.74 feet to the TRUE POINT OF BEGINNING and containing ±20.000 acres.

Subject to and together with all appurtenant easements of record or implied.

DESCRIPTION PARCEL "C"

A tract of land south of Eureka, Montana, Lincoln County, in the NE 1/4 of Section 8 and in the NW 1/4 of Section 9, T.35N. R.27W., P.M., MT., containing ±20.000 acres, more particularly described as follows:

Commencing at a 3 1/4 inch diameter BLM brass monument, being the Northwest section corner of said Section 9; Thence N89°42'03"E, a distance of 657.74 feet along the north line of said Section 9 to a set 5/8 inch diameter rebar with a plastic cap marked Hughes 7322-LS, and the TRUE POINT OF BEGINNING; Thence along the north section line of said Section 9, N89°42'03"E, a distance of 325.85 feet to a set 5/8 inch diameter rebar with a plastic cap marked Hughes 7322-LS, lying on the section line and being the East-West-West 1/256 corner of said Section 9; Thence S00°06'58"E, a distance of 1038.82 feet to a set 5/8 inch rebar with a plastic cap marked Hughes 7322-LS; Thence S79°33'56"W, a distance of 962.53 feet to a set 5/8 inch diameter rebar with a plastic cap stamped Hughes 7322-LS; Thence N49°16'12"W, a distance of 274.49 feet along the centerline of a 40.00 foot private road and utility easement, as shown hereon, to a set 5/8 inch diameter rebar with a plastic cap marked Hughes 7322-LS; Thence N38°38'48"E, a distance of 1323.69 feet to the TRUE POINT OF BEGINNING and containing ±20.000 acres.

Subject to a 40.00 foot wide private road access and utility easement, and together with all appurtenant easements of record or implied.

DESCRIPTION PARCEL "G"

A tract of land south of Eureka, Montana, Lincoln County, in the NE 1/4 of Section 8, T.35N. R.27W., P.M., MT., containing ±10.000 acres, more particularly described as follows:

Commencing at a 3 1/4 inch diameter BLM monument, being the East 1/4 section corner of said Section 8; Thence along the east/west mid-section line of said Section 8, S89°48'30"W, a distance of 1220.58 feet to a set 5/8 inch diameter rebar with a plastic cap marked Hughes 7322-LS, and the TRUE POINT OF BEGINNING; Thence continuing along said east/west mid-section line, S89°48'30"W, a distance of 425.70 feet to a set 5/8 inch rebar with a plastic cap marked Hughes 7322-LS, being the Center East-West-West 1/256 corner of said Section 8; Thence N00°00'23"W, a distance of 1022.47 feet to a set 5/8 inch diameter rebar with a plastic cap marked Hughes 7322-LS, lying on the southerly right-of-way line of a 60.00 foot private road and utility easement known as Slick Gulch Road; Thence N00°00'23"W, a distance of 30.87 feet to an unmarked computed point, being the centerline of said 60.00 foot private road and utility easement; Thence continuing along said centerline and along the arc of a non-tangent curve to the left, a length of 170.47 feet, having a radius of 1000.00 feet, turning through a delta angle of 9°46'01" to an unmarked computed point; Thence continuing along said centerline, S85°56'37"E, a distance of 59.65 feet to an unmarked computed point; Thence continuing along said centerline and along the arc of a curve to the right, a length of 199.20 feet, having a radius of 2217.00 feet, and turning through a delta angle of 5°08'53" to an unmarked computed point; Thence S00°01'07"E, a distance of 30.40 feet to a set 5/8 inch diameter rebar with a plastic cap marked Hughes 7322-LS, lying on the southerly right-of-way of said 60.00 private roadway; Thence S00°01'07"E, a distance of 967.84 feet to the TRUE POINT OF BEGINNING and containing ±10.000 acres.

Subject to a 60.00 foot wide private access road and utility easement, known as Slick Gulch Road, and a 40.00 wide private access road and utility easement, together with all appurtenant easements of record or implied.

CERTIFICATE OF SURVEY

- FAMILY TRANSFER -

NE 1/4 OF SECTION 8 & NW 1/4 OF SECTION 9, T. 35N., R. 27W., P.M.,MT.

LINCOLN COUNTY, MONTANA

FOR: ARLENE ANDERSON

DECEMBER 1999

TOTAL ACREAGE = 159.549 ACRES±

DESCRIPTION PARCEL "D"

A tract of land south of Eureka, Montana, Lincoln County, in the NW 1/4 of Section 9, T.35N. R.27W., P.M., MT., containing ±20.000 acres, more particularly described as follows:

Commencing at a 3 1/4 inch diameter BLM brass capped monument, being the Northwest section corner of said Section 9; Thence along the north section line of said Section 9, N89°42'03"E, a distance of 983.59 feet to a set 5/8 inch diameter rebar with a plastic cap marked Hughes 7322-LS, being the East-West-West 1/256 corner of said Section 9; Thence S00°06'58"E, a distance of 1038.82 feet to a set 5/8 inch diameter rebar with a plastic cap marked Hughes 7322-LS and the TRUE POINT OF BEGINNING; Thence S00°06'58"E, a distance of 1171.01 feet to a set 5/8 inch rebar with a plastic cap marked Hughes 7322-LS, lying on the northerly right-of-way line of a 60.00 foot private road and utility easement known as Slick Gulch Road; Thence S00°06'58"E, a distance of 30.04 feet to an unmarked computed point marking the centerline of said 60.00 foot private road and utility easement; Thence continuing along said centerline and along a non-tangent curve to the left, a length of 115.64 feet, having a radius of 1300.00 feet, turning through a delta angle of 05°05'48" to an unmarked computed point; Thence continuing along said centerline, S87°56'54"W, a distance of 385.44 feet to a unmarked computed point; Thence continuing along said centerline and along the arc of a curve to the right, a length of 178.55 feet, having a radius of 500.00 feet, turning through a delta angle of 20°27'37" to an unmarked computed point; Thence continuing along said centerline, N71°35'29"W, a distance of 254.37 feet to an unmarked computed point; Thence continuing along said centerline and along the arc of a curve to the left, a length of 27.85 feet, having a radius of 200.00 feet, turning through a delta angle of 07°58'42" to an unmarked computed point; Thence leaving said centerline, N59°24'19"E, a distance of 42.31 feet to a set 5/8 inch diameter rebar with a plastic cap marked Hughes 7322-LS, lying on the northerly right-of-way of said 60.00 private road and utility easement; Thence N59°24'19"E, a distance of 131.90 feet along the centerline of a 40.00 foot private road and utility easement, as shown hereon, to a set 5/8 inch diameter rebar with a plastic cap marked Hughes 7322-LS; Thence continuing along said centerline, N20°30'42"E, a distance of 296.16 feet to a set 5/8 inch diameter rebar with a plastic cap marked Hughes 7322-LS; Thence continuing along said centerline, N00°21'43"E, a distance of 271.05 feet to a set 5/8 inch diameter rebar with a plastic cap marked Hughes 7322-LS; Thence continuing along said centerline, N41°50'34"W, a distance of 389.15 feet to a set 5/8 inch diameter rebar with a plastic cap marked Hughes 7322-LS; Thence N79°33'56"E, a distance of 962.53 feet to the TRUE POINT OF BEGINNING and containing ±20.000 acres.

Subject to a 60.00 foot wide private access road and utility easement, known as Slick Gulch Road, and a 40.00 wide private access road and utility easement, together with all appurtenant easements of record or implied.

DESCRIPTION PARCEL "E"

A tract of land south of Eureka, Montana, Lincoln County, in the NW 1/4 of Section 9, T.35N. R.27W., P.M., MT., containing ±3.866 acres, more particularly described as follows:

Commencing at a 3 1/4 inch diameter BLM brass capped monument, being the West 1/4 section corner of said Section 9; Thence along the east/west mid-section of said Section 9, N89°43'38"E, a distance of 659.14 feet to a set 5/8 inch diameter rebar with a plastic cap marked Hughes 7322-LS, and the TRUE POINT OF BEGINNING; Thence N25°50'46"W, a distance of 402.37 feet to a set 5/8 inch rebar with a plastic cap marked Hughes 7322-LS, lying on the southerly right-of-way line of a 60.00 foot private road and utility easement known as Slick Gulch Road; Thence N02°03'06"W, a distance of 30.00 feet to an unmarked computed point being the centerline of said 60.00 foot private road and utility easement; Thence continuing along said centerline N87°56'54"E, a distance of 385.44 feet to an unmarked computed point; Thence continuing along said centerline and along the arc of a curve to the right, a length of 115.64 feet, having a radius of 1300.00 feet, turning through a delta angle of 05°05'48" to an unmarked computed point; Thence S00°06'58"E, a distance of 30.05 feet to a set 5/8 inch diameter rebar with a plastic cap marked Hughes 7322-LS, lying on the southerly right-of-way of said 60.00 private road and utility easement; Thence S00°06'58"E, a distance of 373.30 feet to a 5/8 inch diameter rebar with a plastic cap marked 7322-LS; Thence along said east/west mid-section line of Section 9, S89°43'38"W, a distance of 325.13 feet to the TRUE POINT OF BEGINNING and containing ±3.866 acres.

Subject to a 60.00 foot wide private access road and utility easement, known as Slick Gulch Road, and together with all appurtenant easements of record or implied.

DESCRIPTION PARCEL "F"

A tract of land south of Eureka, Montana, Lincoln County, in the NE 1/4 of Section 8, T.35N. R.27W., P.M., MT., containing ±10.000 acres, more particularly described as follows:

Commencing at a 3 1/4 inch diameter BLM brass monument, being the East 1/4 section corner of said Section 8; Thence along the east/west mid-section of said Section 8, S89°48'30"W, a distance of 758.80 feet to a set 5/8 inch diameter rebar with a plastic cap marked Hughes 7322-LS, and the TRUE POINT OF BEGINNING; Thence continuing along said east/west mid-section, S89°48'30"W, a distance of 461.78 feet to a set 5/8 inch rebar with a plastic cap marked Hughes 7322-LS; Thence N00°01'07"W, a distance of 967.84 feet to a set 5/8 inch diameter rebar with a plastic cap marked Hughes 7322-LS, lying on the southerly right-of-way line of a 60.00 foot private road and utility easement known as Slick Gulch Road; Thence N00°01'07"W, a distance of 30.40 feet to an unmarked computed point marking the centerline of said 60.00 foot private and utility easement; Thence continuing along said centerline and along the arc of a non-tangent curve to the right 480.54 feet, having a radius of 2217.00 feet, turning through a delta angle of 12°25'08" to an unmarked computed point; Thence S00°01'01"W, a distance of 32.30 feet to a set 5/8 inch diameter rebar with a plastic cap marked Hughes 7322-LS, lying on the southerly right-of-way of said 60.00 private road and utility easement; Thence S00°01'01"W, a distance of 836.91 feet to the TRUE POINT OF BEGINNING and containing ±10.000 acres.

Subject to a 60.00 foot wide private access road and utility easement, known as Slick Gulch Road, and together with all appurtenant easements of record or implied.

PURPOSE OF SURVEY AND EXEMPTION CERTIFICATION

I, Arlene J. Anderson, owner of record, hereby certify that the purpose of this survey and division of land, outside a plotted subdivision, is to transfer Parcel "A", ±40.000 acres, to Corinne Susan Wiedemann, a daughter; transfer Parcel "B", ±20.000 acres, to Graham Byron Anderson, a son; transfer Parcel "C", ±20.000 acres, to Rodney Stuart Anderson, a son; transfer Parcel "D", ±20.000 acres, to Larry Clark Anderson, a husband; that this is the first and single gift or sale in this county to these members of my immediate family. Therefore this division is exempt from review as a subdivision pursuant to Section 76-3-207(b), M.C.A. Furthermore, Parcel "E", Parcel "F" and Parcel "G" are hereby created for agricultural purposes and are exempt from review subdivision review pursuant to M.C.A. 76-3-201(6) and are exempt from Department of Environmental Quality review pursuant to Section 17.16.605(1)(h).

Arlene J. Anderson Jan 11 / 2000
Arlene J. Anderson Date

ACKNOWLEDGEMENT

CANADA

Province of Alberta) ss

The foregoing Exemption was subscribed and acknowledged before me, a Notary Public duly commissioned and qualified as such, personally appeared Arlene J. Anderson, known to me to be the same, on this 11 day of January, 1999. In witness whereof, I have hereunto set my hand and affixed my notarial seal.

_____, Notary Public for the Province of _____

residing in: _____ My Commission expires: _____

HISTORY OF SURVEY

1987 – COS No. 1618, by F&H, xxxxxS
1996 – COS No. 2511, by Marquardt, 7328S

METHOD OF SURVEY

A Trimble 4700 GPS RTK System and a Nikon total station and data collector was used to tie previously set controlling corners and features.

BASIS OF BEARING

The basis of bearing for this survey is N00°06'44"W, as shown on COS No. 2511 between the NE section corner, Section 8 and the E 1/4 section corner, Section 8, both 3 1/4 inch BLM brass capped monuments.

LAND SURVEYOR'S CERTIFICATION

I hereby certify that I am a Registered Land Surveyor in the State of Montana, that the survey shown on this Certificate of Survey has been prepared under my supervision and in accordance with the Montana Code Annotated, Sections 76-3-101 through 76-3-625 and the Lincoln County regulations adopted pursuant thereto.

Alvah F. Hughes 7322LS 12-31-1999
Alvah F. Hughes, Montana Reg. No. 7322LS Date

DESCRIPTION OF REMAINDER

A tract of land south of Eureka, Montana, Lincoln County, in the NW 1/4 of Section 9 and in the NE 1/4 of Section 8, T.35N. R.27W., P.M., MT., containing ±35.683 acres, more particularly described as follows:

Commencing at a 3 1/4 inch diameter BLM brass capped monument, being the East 1/4 corner of said Section 8 and the TRUE POINT OF BEGINNING; Thence along the east/west mid-section line of said Section 8, S89°48'30"W, a distance of 758.80 feet to a set 5/8 inch diameter rebar with a plastic cap marked Hughes 7322-LS; Thence N00°01'01"E, a distance of 836.91 feet to a set 5/8 inch diameter rebar with a plastic cap marked Hughes 7322-LS, lying on the southerly right-of-way line of a 60.00 foot private road and utility easement known as Slick Gulch Road; Thence N00°01'01"E, a distance of 32.30 feet to an unmarked computed point marking the centerline of said 60.00 foot private road and utility easement; Thence continuing along said centerline and along a non-tangent curve to the right, a length of 174.01 feet, having a radius of 2217.00 feet, turning through a delta angle of 04°29'50" to an unmarked computed point; Thence N00°45'11"W, a distance of 33.57 feet to a set 5/8 inch rebar with a plastic cap marked Hughes 7322-LS marking the northerly right-of-way of said 60.00 foot private road and utility easement; Thence N00°45'11"W, a distance of 866.61 feet to a set 5/8 inch diameter rebar with a plastic cap marked Hughes 7322-LS; Thence S83°36'47"E, a distance of 439.97 feet to a set 5/8 inch diameter rebar with a plastic cap stamped Hughes 7322-LS; Thence S49°16'12"E, a distance of 274.49 feet along the centerline of a 40.00 foot private road and utility easement, as shown hereon; Thence continuing along said centerline, S41°50'34"E, a distance of 389.15 feet to a set 5/8 inch diameter rebar with a plastic cap marked Hughes 7322-LS; Thence continuing along said centerline, S00°21'43"W, a distance of 271.05 feet to a set 5/8 inch diameter rebar with a plastic cap marked Hughes 7322-LS; Thence continuing along said centerline, S20°30'42"W, a distance of 296.16 feet to a set 5/8 inch diameter rebar with a plastic cap marked Hughes 7322-LS; Thence continuing along said centerline, S59°24'19"W, a distance of 131.90 feet to a set 5/8 inch diameter rebar with a plastic cap marked Hughes 7322-LS, lying on the northerly right-of-way of a 60.00 foot private road and utility easement, known as Slick Gulch Road; Thence S59°24'19"W, a distance of 42.31 feet to an unmarked computed point marking the centerline of said 60.00 foot road and utility easement; Thence continuing along said centerline and along the arc of a curve to the right, a length of 27.85 feet, having a radius of 200.00 feet, turning through a delta angle of 7°58'42" to an unmarked computed point; Thence continuing along said centerline, S71°35'29"E, a distance of 254.37 feet to an unmarked computed point; Thence continuing along said centerline and along the arc of a curve to the left, a length of 178.55 feet, having a radius of 500.00 feet, turning through a delta angle of 20°27'37" to an unmarked computed point; Thence leaving said centerline, S02°03'06"E, a distance of 30.00 feet to a set 5/8 inch diameter rebar with a plastic cap marked Hughes 7322-LS, lying on the southerly right-of-way of said 60.00 private road and utility easement; Thence S25°50'46"E, a distance of 402.37 feet to a set 5/8 inch diameter rebar with a plastic cap marked Hughes 7322-LS; Thence along the east/west mid-section line of said Section 9, S89°43'38"W, a distance of 659.14 feet to the TRUE POINT OF BEGINNING and containing ±35.683 acres.

Subject to a 60.00 foot wide private access road and utility easement, known as Slick Gulch Road, and a 40.00 wide private access road and utility easement, together with all appurtenant easements of record or implied.

CERTIFICATE OF SURVEY NO. 2899

SHEET 2 OF 2

Doc# 145069