

CERTIFICATE OF SURVEY

DEPENDENT RESURVEY AND SECTION SUBDIVISION

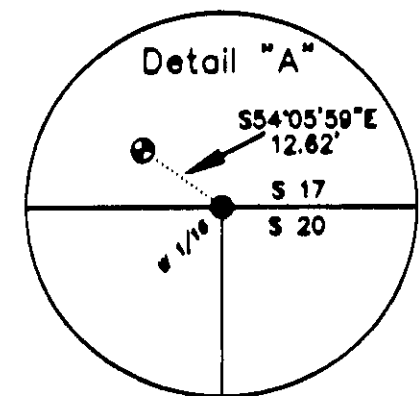
SECTION 20, T.33N., R.34W., P.M.MT.

U.S.D.A., FOREST SERVICE, KOOTENAI NATIONAL FOREST

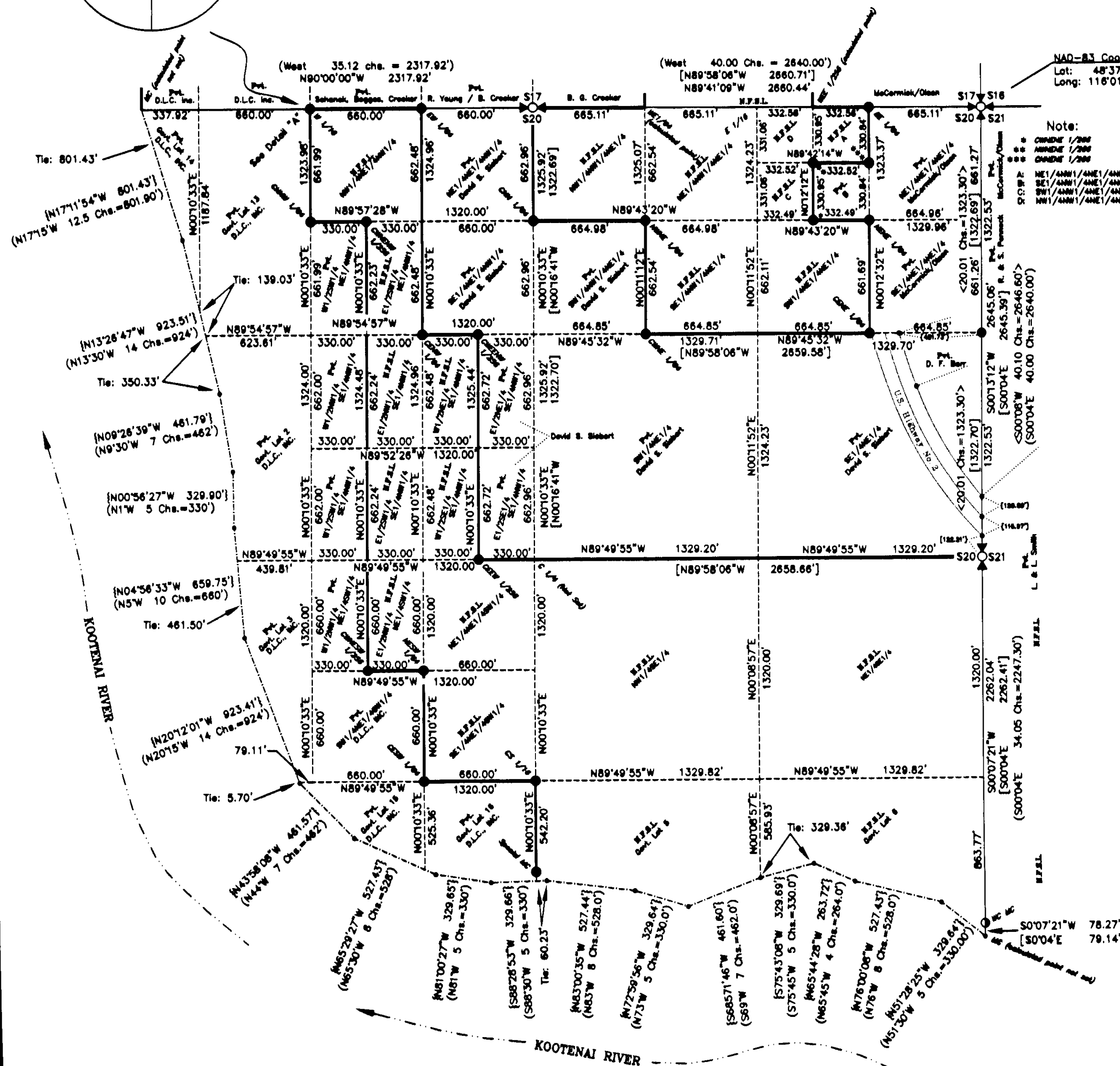
LINCOLN COUNTY, MONTANA

JUNE 1999

Project Name: Downpine



See
Surveyor's
Notes Page 2



NAD-83 Coordinates
Lat: 48°37'05.88\"/>

Note:

CHANGES 1/2000
ADJUSTED 1/2000
CHANGES 1/2000
NE1/4NW1/4NE1/4NE1/4
SE1/4NW1/4NE1/4NE1/4
SW1/4NW1/4NE1/4NE1/4
NW1/4NW1/4NE1/4NE1/4

George J. McCormick

LEGEND

- Found, a 5/8 ins. diam., steel rebar with yellow plastic cap mkd. M.D.L. 4232S
- Witness Corner to the Meander Corner found; a 2\"/>

GRAPHIC SCALE



(IN FEET)
1 inch = 500 ft.

Kootenai National Forest
1101 US Highway 2 West
Libby, Montana 59923 (406) 293-6211

SHEET 1 OF 2

CERTIFICATE OF SURVEY NO. 2832
Dxx 140867

CERTIFICATE OF SURVEY
DEPENDENT RESURVEY AND SECTION SUBDIVISION
SECTION 20, T.33N., R.34W., P.M., MT.
U.S.D.A., FOREST SERVICE, KOOTENAI NATIONAL FOREST
LINCOLN COUNTY, MONTANA
JUNE 1999

Project Name: Downpine

PURPOSE OF SURVEY

The purpose of this survey is to retrace, subdivide and mark the boundaries of existing record parcels, distinguishing between National Forest System Lands and private lands, therefore no division of land is hereby created.

HISTORY OF SURVEY

- 1903, original G.L.O. subdivision & meanders of township by Allen B. Benedict.
1941, Exchange Survey No. 1258, remonuments the NE corner of section 20 by U.S.D.A. F.S., Donald Sawhill.
1966-1968, B.L.M. remonumentation of G.L.O. corners by Woodrow E. Damm et. al.
1980, C.O.S. No. 762, creates parcel in Sec. 20 by Melvin D. Lauteren, Reg. No. 4232S.
1993, Certified Corner Recordation No. 6004, sets the W1/16 of Secs. 17 & 20 by Ken E. Davis, Reg. No. 4975S

METHOD OF SURVEY

Control was accomplished using TRIMBLE 4000 SSI survey grade Global Positioning System receivers, and a constrained Least Squares Adjustment, based on N.G.S. first order control station "Central 1986" Lat. 48°37'44.15592"N, Lon. 116°01'36.07822"W and 1st order horizontal control station "Kay 1986" Lat. 48°36'00.99520"N, Lon. 115°57'44.03711W.

BASIS OF BEARING

Bearings are based on G.P.S., N.G.S. control and a user defined Transverse Mercator coordinate system with a Central Meridian at latitude: 48°00'00" N and longitude: 116°00'20" W, mean project elevation scale factor 1.000107425486

SURVEYOR'S NOTES

During research for the subdivision of section 20, a certified corner recordation No. 6004 for the West 1/16 corner of Sections 17 and 20 was found, said corner recordation referencing a "section breakdown of section 17 T.33N., R.34W., P.M.M. by Davis Surveying on record in the Lincoln County Courthouse". No evidence of said section breakdown could be located in the Lincoln County Courthouse. A call to Davis Surveying revealed that no certificate of survey had been or would be filed on said Section 17. The survey hereon is based on single point control as referenced in section 5-45 of the BLM Manual of Surveying Instructions, 1973, for the method of reestablishing the meander corner between Secs. 17 and 20. Record meanders were adjusted using the compass rule method to close on the aforementioned meander corner. As a result of said single point control from the 1/4 corner of Secs. 17 and 20 the position of the West 1/16 corner between Secs. 17 and 20 as set by Davis Survey was not accepted.

The method used to subdivide Section 20 was suggested by the Cadastral Branch, Montana State office of the Bureau of Land Management.

The position for the center 1/4 of Section 20 was established by the intersection of the North-South and the East-West center lines of Section 20. The bearings of the midsection lines were ascertained from the mean bearing of the north section line, and the mean bearing of the east section line of said section 20, as referenced in section 3-88 of the BLM Manual of Surveying Instructions, 1973. The Witness Corner to the Meander Corner set by M. D. Lauteren 4232-S was accepted after verifying it's position with the remaining original 1903 GLO bearing tree. No evidence of the original Meander Corner manument was found.

LEGAL DESCRIPTION OF PRIVATE OWNERSHIP:

NE1/4NE1/4NE1/4, SE1/4NE1/4NE1/4, SE1/4NW1/4NE1/4NE1/4, SE1/4NE1/4, SW1/4NE1/4
SW1/4NW1/4NE1/4, Govt. Lot 4, SW1/4NE1/4SW1/4, W1/2NW1/4NE1/4SW1/4, Govt. Lot 15, Govt. Lot 16,
E1/2SE1/4SE1/4NW1/4, W1/2SW1/4SE1/4NW1/4, E1/2NE1/4SE1/4NW1/4, W1/2NW1/4SE1/4NW1/4,
SE1/4NE1/4NW1/4, W1/2SW1/4NE1/4NW1/4, NE1/4NE1/4NW1/4, Govt. Lot 13, Govt. Lot 14, Sec. 20

LEGAL DESCRIPTION OF NATIONAL FOREST SYSTEM LANDS:

NE1/4NW1/4NE1/4NE1/4, SW1/4NW1/4NE1/4NE1/4, NW1/4NW1/4NE1/4NE1/4, SW1/4NE1/4NE1/4,
NW1/4NW1/4NE1/4, SE1/4NW1/4NE1/4, NE1/4NW1/4NE1/4, NE1/4SE1/4, Govt. Lot 6, Govt. Lot 5,
NW1/4SE1/4, SE1/4NE1/4SW1/4, NE1/4NE1/4SW1/4, E1/2NW1/4NE1/4SW1/4, E1/2SW1/4SE1/4NW1/4,
W1/2SE1/4SE1/4NW1/4, E1/2NW1/4SE1/4NW1/4, W1/2NE1/4SE1/4NW1/4, E1/2SW1/4NE1/4NW1/4,
NW1/4NE1/4NW1/4, Sec. 20

FOREST SUPERVISOR'S CERTIFICATE

This survey was made at my request for National Forest Management purposes

Bob Castaneda 6/23/99
Bob Castaneda, Forest Supervisor Date

SURVEYOR'S CERTIFICATE:

I hereby certify that I am a Registered Land Surveyor in the State of Montana, that the survey shown on this Certificate of Survey has been prepared in accordance with Montana Code Annotated (Sections 76-3-101 through 76-3-614) and the Lincoln County regulations adopted pursuant thereto.

Steven A. Boyer 23 June 1999
Steven A. Boyer, Montana Reg. No. 9750LS Date

CERTIFICATE OF EXAMINING OFFICIAL:

Approved this 23 day of June 1999, A.D.

Bill W. Schuler
Examining Official

Approved Chairman, Lincoln County Commissioners
Chairman, Lincoln County Commissioners

CERTIFICATE OF CLERK AND RECORDER:

State of Montana, County of Lincoln, filed this 24th day
of June 1999, A.D. at 11:50 o'clock

Paul H. Cummings by James A. Quinn
County Clerk Recorder Deputy

Kootenai National Forest
1101 US Highway 2 West
Libby, Montana 59923 (406) 293-6211

SHEET 2 OF 2

CERTIFICATE OF SURVEY NO. 2532

Doc # 140867