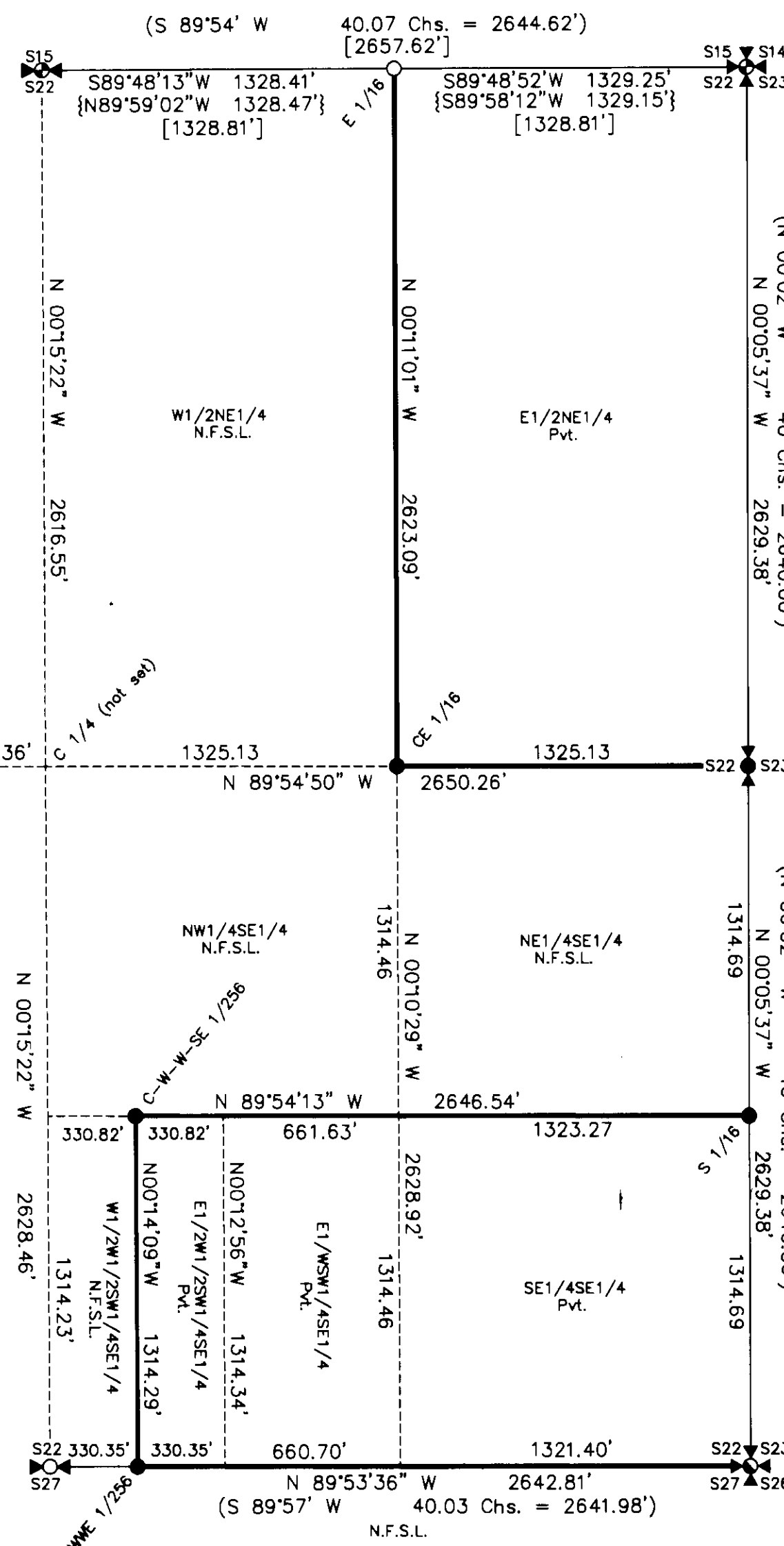
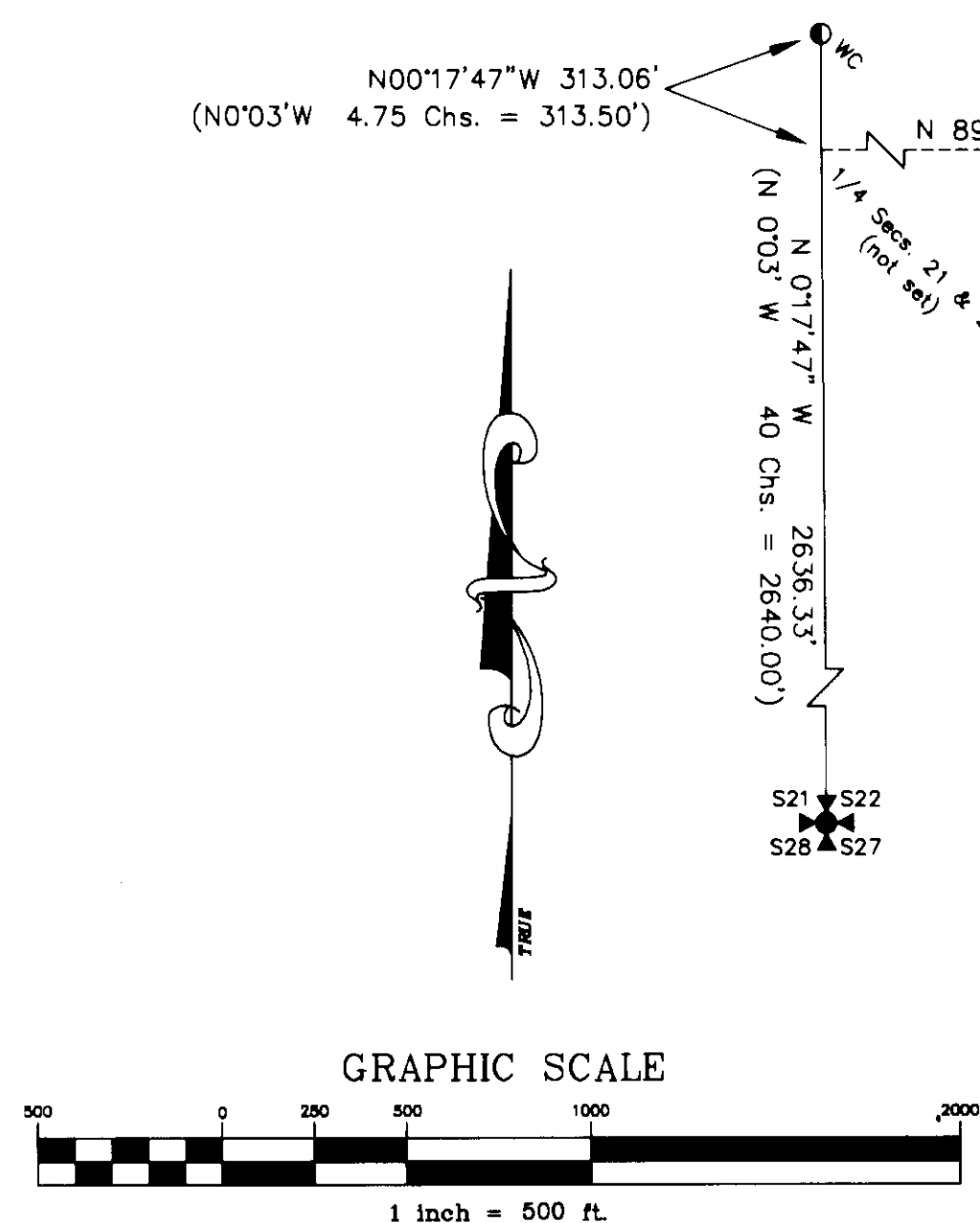


CERTIFICATE OF SURVEY
DEPENDENT RESURVEY AND SECTION SUBDIVISION
E 1/2 OF SECTION 22, T.31N., R.34W., P.M.,MT.
KOOTENAI NATIONAL FOREST
LINCOLN COUNTY, MONTANA
August 1998

LEGEND

- Section subdivision monument set this survey; a 3/4" dia. aluminum rod with 3 1/4" aluminum cap, marked U.S.D.A., Forest Service, 1998, 9750LS
- Section subdivision monument found, a 2 1/2" dia. aluminum pipe with 3 1/4" dia. aluminum cap, marked U.S.D.A. Forest Service, 1981, 5612S
- ⊕ 1/4 section corner monument set this survey; a 2 1/2" dia. aluminum pipe with 3 1/4" aluminum cap, marked U.S.D.A., Forest Service, 1998, 9750LS
- ⊕ 1/4 section corner monument found; a 2 1/2" dia. aluminum pipe with 3 1/4" dia. aluminum cap, marked U.S.D.A. Forest Service, 1984, 5612S
- WC to 1/4 section corner monument found; a 3/4" dia. aluminum rod with 3 1/4" dia. aluminum cap, marked U.S.D.A. Forest Service, 1991, 7322LS
- ⊕ 1/4 section corner monument found; a 2 1/2" dia. iron pipe with 3 1/4" dia. brass cap, marked B.L.M., 1967
- ⊕ Section corner monument found; a 2 1/2" dia. aluminum pipe with 3 1/4" dia. aluminum cap, marked U.S.D.A. Forest Service, 1985, 4659S
- ⊕ Section corner monument found; a 2 1/2" dia. iron pipe with 3 1/4" dia. brass cap, marked B.L.M., 1967
- ⊕ Section corner monument found; an original stone, remonumented this survey with a 2 1/2" dia. aluminum pipe with 3 1/4" dia. aluminum cap marked U.S.D.A. Forest Service, 1998, 9750LS
- Section lines
- Property boundary posted by this survey () Original G.L.O. record
- - - - Minor subdivision lines not posted { } C.O.S. No. 1085 record
- N.F.S.L. National Forest System Lands [] Certified Corner Recordation



FOREST SUPERVISOR'S CERTIFICATE

This survey was made at my request for National Forest Management purposes
Robert L. Schrenk
Robert L. Schrenk, Forest Supervisor
Date *2 Sept 98*

PRIVATE OWNERSHIP, LEGAL DESCRIPTION

E1/2NE1/4, SE1/4SE1/4, E1/2SW1/4SE1/4, E1/2W1/2SW1/4SE1/4, Sec. 22

NATIONAL FOREST SYSTEM LANDS, LEGAL DESCRIPTION

W1/2NE1/4, NE1/4SE1/4, W1/2W1/2SW1/4SE1/4, NW1/4SE1/4, Sec. 22

GEODETIC COORDINATES, NAD 1983:

CORNER	LATITUDE	LONGITUDE	CORNER	LATITUDE	LONGITUDE
E 1/16	48°26'34.803" N	115°55'48.573" W	S 1/16	48°25'55.932" N	115°55'28.761" W
CE 1/16	48°26'08.922" N	115°55'48.443" W	CWSE 1/256	48°25'55.968" N	115°56'03.095" W
E 1/4	48°26'08.904" N	115°55'28.795" W	WWE 1/256	48°25'43.001" N	115°56'03.010" W
Freeman	48°25'15.37405 N	115°53'30.83252 W	SE	48°25'42.960" N	115°56'47.054" W
Alvord Az	48°29'57.76639 N	115°54'09.71756" W			

HISTORY OF SURVEY

1902, original G.L.O. subdivision of township by Allen B. Benadict
1967, B.L.M. remonumentation of G.L.O. corners by Woodrow E. Damm et al
1982, C.O.S. No. 1085, subdivides sec. 15 by Jack H. Ninneman, Reg. No. 4661S
1982, Certified Corner Recordation, sets the E 1/16 of secs. 15 & 22 by Thomas C. Hill, Reg. No. 5612S

METHOD OF SURVEY

Control was accomplished using survey grade Global Positioning System receivers, and a constrained Least Squares Adjustment, based on N.G.S. first order control station "Freeman" (1986) and 2nd order horizontal control station "Alvordaz" (1986). A one second, total station and data collector was used with closed traverse procedures and constrained least squares adjusted for ground control.

BASIS OF BEARING

Bearings are based on G.P.S. control and a user defined local grid Transverse Mercator projection system with a Central Meridian at latitude: 48°00'00" N and longitude: 115°55'09" W, scale factor 1.000122995206

SURVEYOR'S NOTES

The 1/4 cor. for sec. 21 & 22 was not set by the original G.L.O. surveyor, because the corner point fell on "insecure ground". The corner was calculated by single proportion between the SW corner of sec. 22 and the witness corner. The corner point falls in Callahan creek and was not set by this survey.

SURVEYOR'S CERTIFICATE:

I hereby certify that I am a registered land surveyor in the State of Montana, that the survey shown on this Certificate of Survey has been prepared in accordance with Montana Code Annotated (Sections 76-3-101 through 76-3-614) and the Lincoln County regulations adopted pursuant thereto.

Steven A. Boyer 9750LS *Sept. 1, 1998*
Steven A. Boyer, Montana Reg. No. 9750LS Date

CERTIFICATE OF EXAMINING OFFICIAL:

Approved this *10* day of *Sept* 199*8*, A.D.

Examining Official

Approved *L.G. Hulse* *09/10/98*
Chairman, Lincoln County Commissioners
Examining Land Surveyor

CERTIFICATE OF CLERK AND RECORDER:

State of Montana, County of Lincoln, filed this *10th* day of *September* 199*8*, A.D. at *1:55* o'clock *P.M.*
William J. Cummings by *Francine R. Schenck*
County Clerk Recorder Deputy

CERTIFICATE OF SURVEY NO. *2671*

134767

