

# CERTIFICATE OF SURVEY

DEPENDENT RESURVEY AND SECTION SUBDIVISION  
SW1/4, OF SECTION 27 & S1/2 SECTION 28, T.31N., R.30W., P.M., MT.

KOOTENAI NATIONAL FOREST  
LINCOLN COUNTY, MONTANA

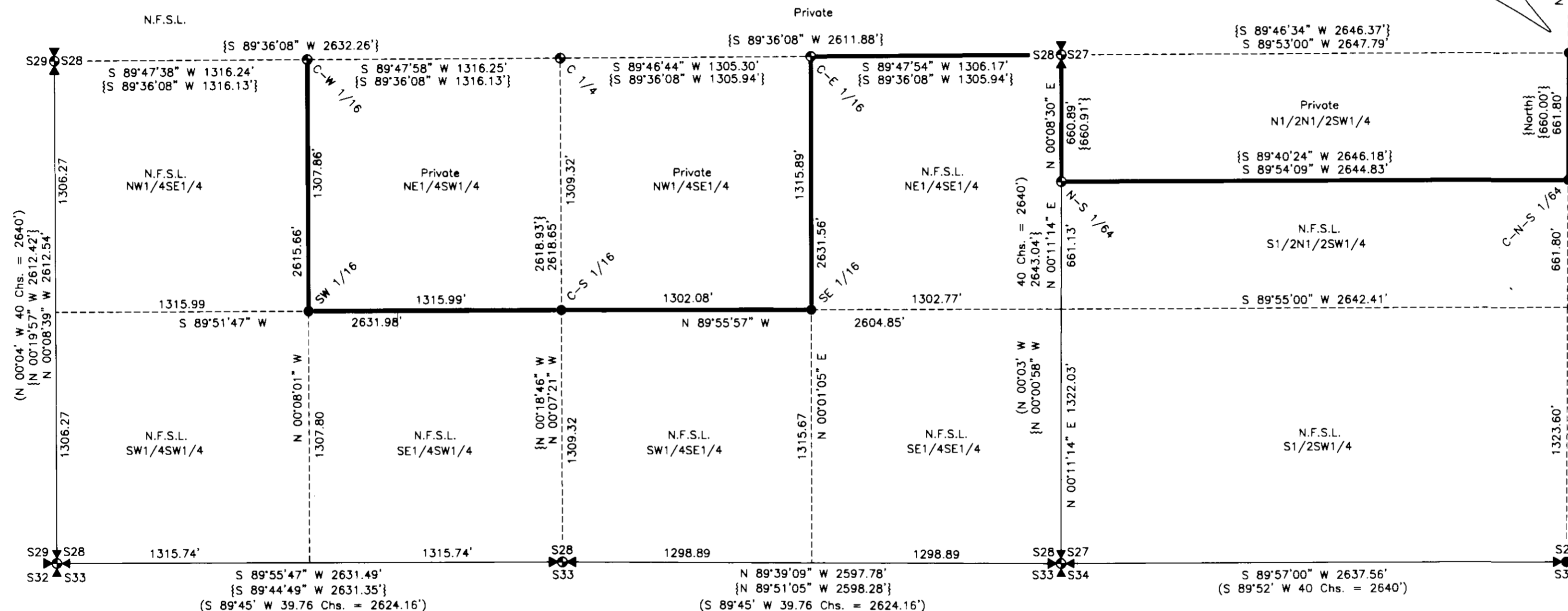
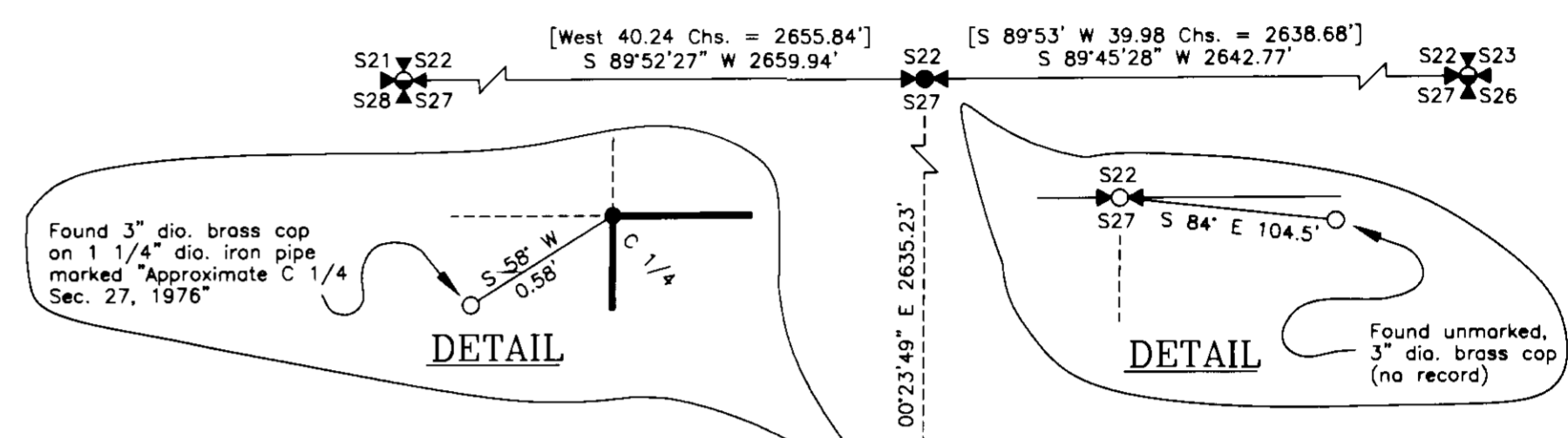
OCTOBER 1997

**FOREST SUPERVISOR'S CERTIFICATE**

This survey was made at my request for National Forest Management purposes  
*Robert L. Schrenk*  
 Robert L. Schrenk, Forest Supervisor  
19 Nov 97  
Date

### LEGEND

- Section subdivision monument set this survey; a 3/4" dia. aluminum rod with 3 1/4" aluminum cap, marked U.S.D.A., Forest Service, 1995, 7322LS
- ⊕ Section subdivision monument found and accepted, a 1 in. dia. iron pipe with 3 in. dia. brass cap record on C.O.S. No. 215
- ⊗ 1/4 section corner monument found; a 1" dia. iron pipe with brass cap marked G.L.O., 1939
- ⊗ 1/4 section corner monument found; a 2 1/2" dia. iron pipe with 3 1/4" dia. brass cap, marked B.L.M., 1964-1965
- ⊗ 1/4 section corner monument set this survey; a 2 1/2" dia. aluminum pipe with 3 1/4" dia. aluminum cap, marked U.S.D.A., Forest Service, 1997, 9008LS
- ⊗ Section corner monument found; a 1" dia. iron pipe with brass cap marked G.L.O., 1939
- ⊗ Section corner monument found; a 2 1/2" dia. iron pipe with 3 1/4" dia. brass cap, marked B.L.M., 1964-1965
- Found monument, position not accepted
- Section lines
- Property boundary posted by this survey
- Minor subdivision lines not posted
- ( ) Original, 1898 G.L.O. record
- [ ] Resurvey, 1939 G.L.O. record
- { } C.O.S. No. 215 record
- N.F.S.L. National Forest System Lands



### GEODETIC COORDINATES, NAD 1983

Corner	Latitude	Longitude
E 1/4 S27	48°25'14.79" N	115°24'26.26" W
C 1/4 S27	48°25'14.74" N	115°25'06.46" W
C-N-S 1/64	48°25'08.21" N	115°25'06.53" W
N-S 1/64	48°25'08.17" N	115°25'45.73" W
W 1/4 S27	48°25'14.69" N	115°25'45.70" W
C-E 1/16	48°25'14.65" N	115°26'05.06" W
SE 1/16	48°25'01.66" N	115°26'05.07" W
C-S 1/16	48°25'01.68" N	115°26'24.37" W
SW 1/16	48°25'01.64" N	115°26'43.87" W
C-W 1/16	48°25'14.55" N	115°26'43.92" W

**LEGAL DESCRIPTION PRIVATE OWNERSHIP:**  
N1/2N1/2SW1/4 S27, & NW1/4SE1/4, NE1/4SW1/4 S28

**LEGAL DESCRIPTION NATIONAL FOREST SYSTEM LANDS:**  
S1/2N1/2SW1/4, S1/2SW1/4 S27 & NE1/4SE1/4, SE1/4SE1/4, SW1/4SE1/4, SE1/4SW1/4, SW1/4SW1/4, NW1/4SE1/4 S28

### HISTORY OF SURVEY

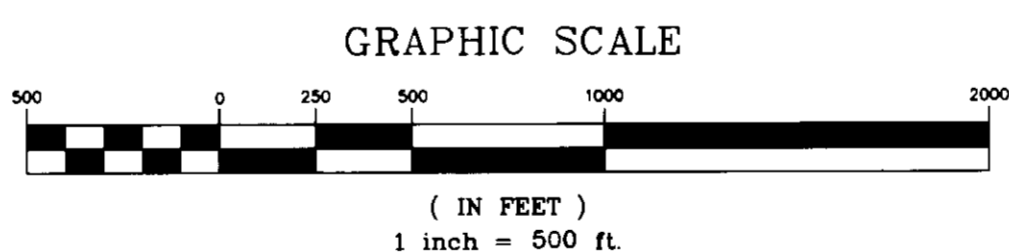
1898, original G.L.O. subdivision of township by Paul S. A. Bickel  
 1939, resurvey, G.L.O. portions of township subdivision by Ranney Y. Lyman  
 1964, B.L.M. remonumentation of G.L.O. corners by Gerald F. Pittman et al  
 1965, B.L.M. remonumentation of G.L.O. corners by Duane G. Lindenberg  
 1976, C.O.S. No. 215, subdivides N1/2 Sec. 28 & S1/2 Sec. 27 by Melvin D. Lauteren, Reg. No. 42325

### METHOD OF SURVEY

Control was accomplished using survey grade Global Positioning System receivers, and a constrained Least Squares Adjustment, based on 1983 independent control stations "C-506" and "2730 U.S.D.A."

### BASIS OF BEARING

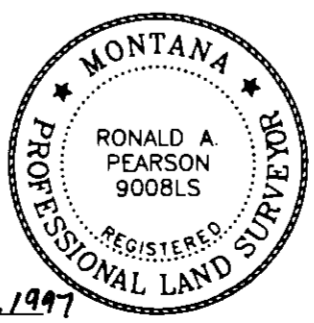
Global Positioning System ties to control stations "C-506" and "2730 U.S.D.A." N.A.D. 83/international feet



### SURVEYOR'S CERTIFICATE:

I hereby certify that I am a registered land surveyor in the State of Montana, that the survey shown on this Certificate of Survey has been prepared in accordance with Montana Code Annotated (Sections 76-3-101 through 78-3-614) and the Lincoln County regulations adopted pursuant thereto.

*Ronald A. Pearson*  
 Ronald A. Pearson, Montana Reg. No. 9008LS  
 Date Nov. 14, 1997



### CERTIFICATE OF EXAMINING OFFICIAL:

Approved this 3rd day of Dec 1997, A.D.  
*Bruce J. Buckhorn*  
 Examining Official

Approved L.G. Deland 12/6/97  
 Chairman, Lincoln County Commissioners  
 Examining Land Surveyor

### CERTIFICATE OF CLERK AND RECORDER:

State of Montana, County of Lincoln, filed this 3rd day of Dec 1997, A.D. at 8:40 o'clock A.M.

*Coralyn Cummings* by *Jeanne Shinn*  
 County Clerk Recorder Deputy

CERTIFICATE OF SURVEY NO. 2606