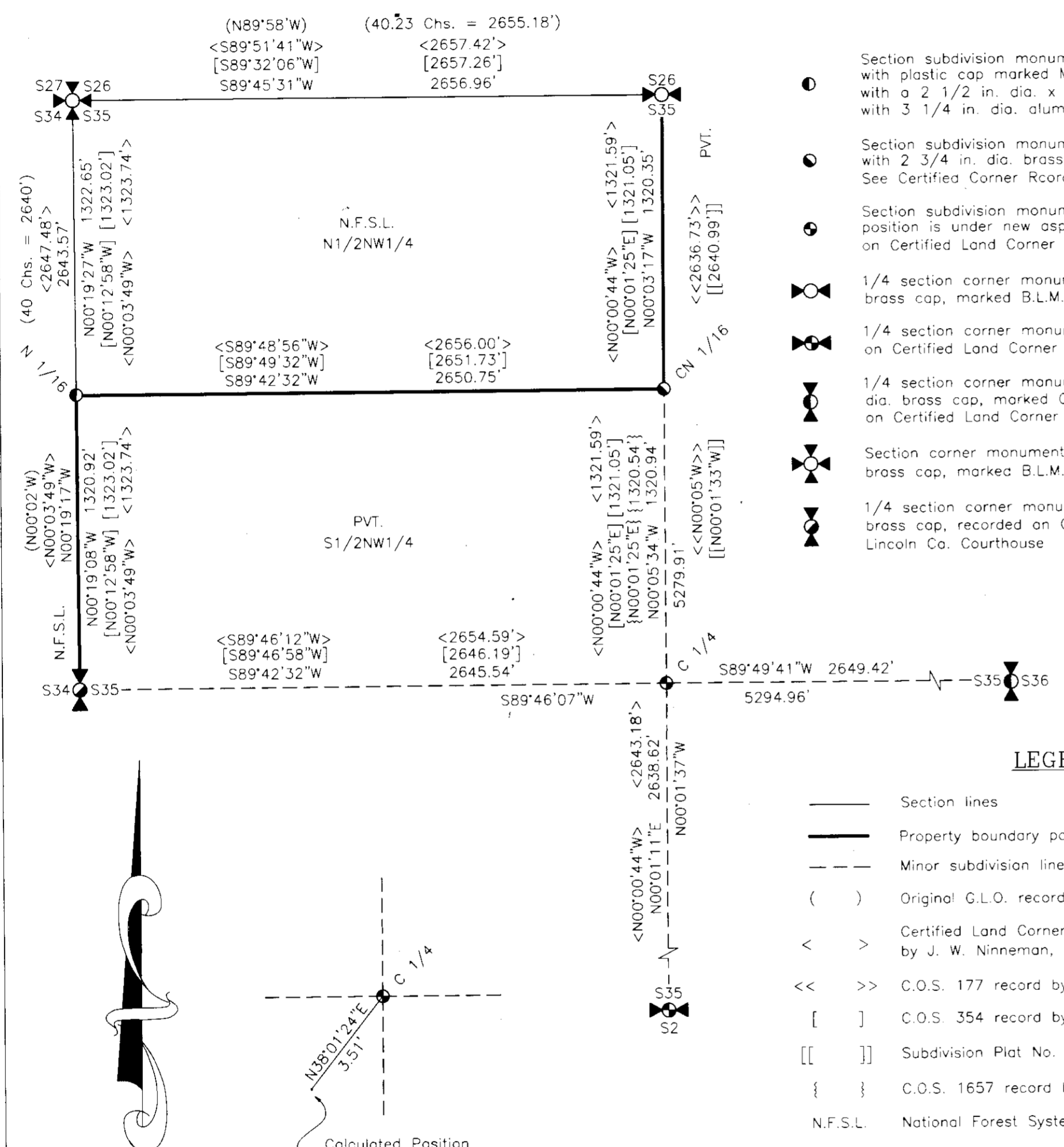
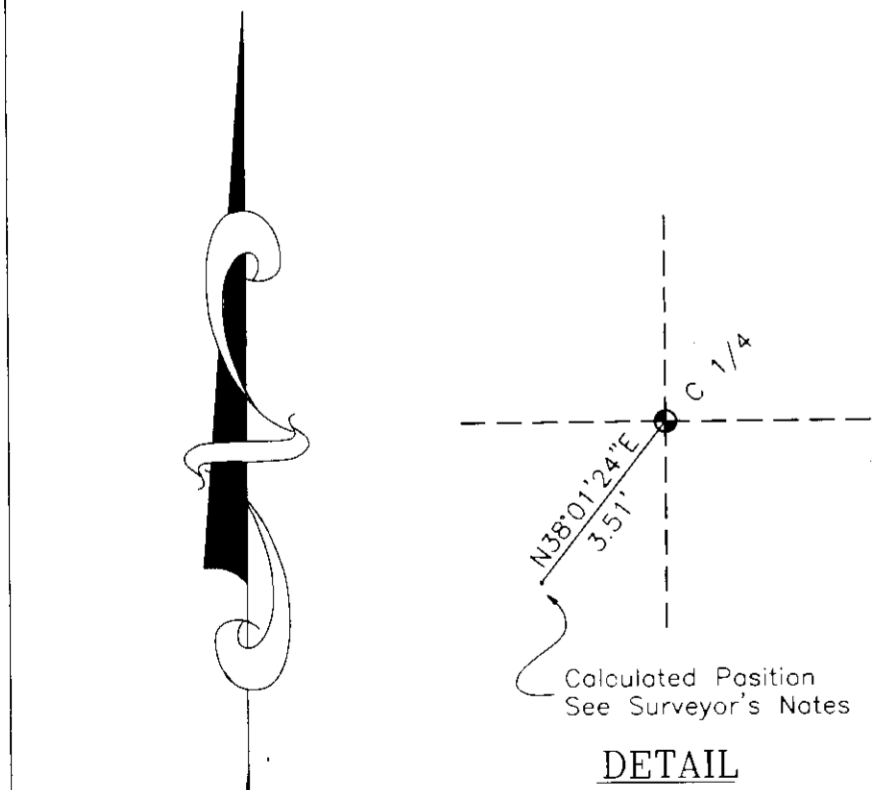


CERTIFICATE OF SURVEY
 DEPENDENT RESURVEY AND SECTION SUBDIVISION
 N1/2 NW 1/4 OF SECTION 35, T.31N., R.31W., P.M., MT.
 KOOTENAI NATIONAL FOREST
 LINCOLN COUNTY, MONTANA
 OCTOBER 1996

FOREST SUPERVISOR'S CERTIFICATE
 This survey was made at my request for National Forest Management purposes.
Robert L. Schrenk
 Robert L. Schrenk, Forest Supervisor
 8/07/96
 Date



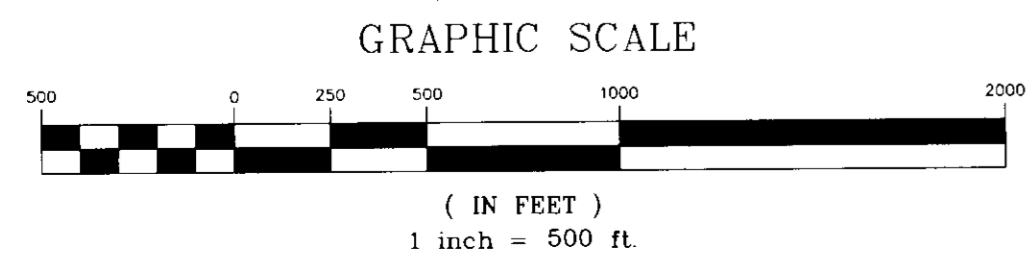
- LEGEND**
- Section subdivision monument found and accepted, a 7/8 in. dia. iron pipe with plastic cap marked MDL 4232S, recorded on C.O.S. No. 354. Remonumented with a 2 1/2 in. dia. x 30 ins. aluminum pipe, 8 ins. below road surface with 3 1/4 in. dia. aluminum cap marked: U.S.F.S., 9008LS, 1996
 - Section subdivision monument found and accepted, a 2 1/2 in. dia. iron pipe with 2 3/4 in. dia. brass cap marked KE MDL 4232S, cap remarked AM 1996. See Certified Corner Recordation filed at Lincoln County Courthouse, Montana
 - ⊙ Section subdivision monument position found and accepted, by magnetic locator, position is under new asphalt layer on hwy. 37 reconstruction, recorded on Certified Land Corner Recordation, Bk. 1, Pg. 91, Lincoln Co. Courthouse
 - ⊗ 1/4 section corner monument found; a 2 1/2" dia. iron pipe with 3 1/4" dia. brass cap, marked B.L.M., 1962 - 1964
 - ⊗ 1/4 section corner monument found; a PK nail in road recorded on Certified Land Corner Recordation, Bk. 1, Pg. 1431, Lincoln Co. Courthouse
 - ⊗ 1/4 section corner monument found; a 2 1/2 in. dia. iron pipe with 3 1/4 in. dia. brass cap, marked Corps of Engineers, U.S. Army, 1974, recorded on Certified Land Corner Recordation, Bk. 1, Pg. 4013, Lincoln Co. Courthouse
 - ⊗ Section corner monument found; a 2 1/2" dia. iron pipe with 3 1/4" dia. brass cap, marked B.L.M., 1962 - 1964
 - ⊗ 1/4 section corner monument found; a 1/2" dia. iron pipe with 2" dia. brass cap, recorded on Certified Land Corner Recordation, Bk. 1, Pg. 501 Lincoln Co. Courthouse



- LEGEND**
- Section lines
 - Property boundary posted by this survey
 - - - Minor subdivision lines not posted
 - () Original G.L.O. record
 - < > Certified Land Corner Recordation, Bk. 1 Pg. 91 by J. W. Ninneman, Reg. No. 354ES
 - << >> C.O.S. 177 record by J. W. Ninneman, Reg. No. 534ES
 - [] C.O.S. 354 record by M. Lauteren, Reg. No. 4232S
 - [[]] Subdivision Plat No. 3012 & 3061 by M. Lauteren, Reg. No. 4232S
 - { } C.O.S. 1657 record by D. Druyvestein, Reg. No. 2927ES
 - N.F.S.L. National Forest System Lands

GEOGRAPHIC COORDINATES

COR.	LATITUDE	LONGITUDE
N 1/4	48°24'48.34" N	115°31'35.64" W
CN 1/6	48°24'35.31" N	115°31'35.63" W
N 1/16	48°24'35.19" N	115°32'14.92" W
W 1/4	48°24'22.15" N	115°32'14.82" W



LEGAL DESCRIPTION OF PRIVATE OWNERSHIP:
 S1/2NW1/4 of Sec. 35

LEGAL DESCRIPTION OF NATIONAL FOREST SYSTEM LANDS:
 N1/2NW1/4 of Sec. 35

HISTORY OF SURVEY

1893, original G.L.O. south boundary & subdivision of township by Daniel P. Mumbrue
 1962 - 1964, B.L.M. remonumentation of G.L.O. corners by Gerald F. Pittman et al
 1968, Certified Land Corner Recordation, Bk. 1 Pg. 91, subdivides section 35 by Jack W. Ninneman, Reg. No. 354ES
 1975, C.O.S. No. 177, creates tracts in the NE 1/4, section 35 by Jack W. Ninneman No. 354ES
 1977, C.O.S. No. 354, creates parcels in SW1/4NW1/4 section 35 by (Kootenai Engineering) Melvin D. Lauteren, Reg. No. 4232S
 1977, Subdivision Plat No. 2959, Ponderosa Heights creates parcels in NW1/4NE1/4 Sec. 35 by (Kootenai Engineering) Melvin D. Lauteren, Reg. No. 4232S
 1977, Subdivision Plat No. 3012, Ponderosa Heights First Addition, creates parcels in the NW1/4NE1/4 by (Kootenai Engineering) Melvin D. Lauteren, Reg. No. 4232S
 1977, Certified Land Corner Recordation, Bk. 1 Pg. 501, sets 1/4 corner of sections 34 & 35 by Melvin D. Lauteren, Reg. No. 4232S
 1978, Subdivision Plat No. 3061, Ponderosa Heights Second Addition, creates parcels in the NW1/4NE1/4 by (Kootenai Engineering) Melvin D. Lauteren, Reg. No. 4232S
 1981, Certified Land Corner Recordation, Bk. 1 Pg. 1431, sets by single proportion the 1/4 corner of sections 2 & 35 by Melvin D. Lauteren, Reg. No. 4232S
 1988, C.O.S. No. 1657, creates tracts in SE1/4NW1/4 by Terry L. Druyvestein Reg. No. 2927ES
 1989, Certified Land Corner Recordation, Bk. 1 Pg. 4013, sets 1/4 corner of sections 35 & 36 by John C. Erickson, Reg. No. 3979S, 1974 monument.

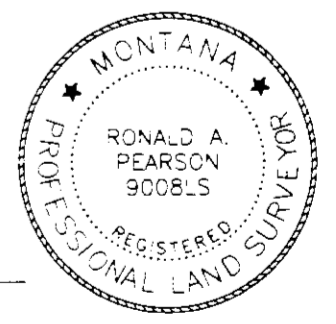
METHOD OF SURVEY
 A one second, total station and data collector was used with closed traverse procedures to the original controlling corners. The location of the monuments set this survey meet the positional tolerance standard referenced in the U.S.D.A. Forest Service, Region One, Cadastral Contract Specification Manual, dated 1987.

BASIS OF BEARING
 Global Positioning System ties to N.G.S. control stations "Cutoff" and "C506" N.A.D. 83/international feet

SURVEYOR'S NOTES
 A research of all county records showed; that previous surveys had established and accepted the C1/4 corner of section 35. The record survey by J. W. Ninneman, Reg. No. 354ES in 1968 showed the C1/4 corner set by single proportion and not an intersection of controlling section 1/4 corners. A control survey was completed and an acceptable procedure of intersection of controlling corners was compared to the found position of the Ninneman C1/4 and the monument was found to be an acceptable position.

SURVEYOR'S CERTIFICATE:
 I hereby certify that I am a registered land surveyor in the State of Montana, that the survey shown on this Certificate of Survey has been prepared in accordance with Montana Code Annotated (Sections 76-3-101 through 76-3-614) and the Lincoln County regulations adopted pursuant thereto.

Ronald A. Pearson 10/8/96
 Ronald A. Pearson, Montana Reg. No. 9008LS Date



CERTIFICATE OF EXAMINING OFFICIAL:
 Approved this 10th day of Oct 1996, A.D.
Barry W. Bishop
 Examining Official
 Approved *Gerald R. Cramer*
 Chairman, Lincoln County Commissioners

CERTIFICATE OF CLERK AND RECORDER:
 State of Montana, County of Lincoln, filed this 10th day of October 1996, A.D. at 9:00 o'clock A.M.
Coral A. Cummings by *Jeannie Dennis*
 County Clerk Recorder Deputy

CERTIFICATE OF SURVEY NO. 2501