

CERTIFICATE OF SURVEY
DEPENDENT RESURVEY AND SECTION SUBDIVISION
SE1/4, SW1/4, NW1/4 OF SECTION 9, T.33N., R.34W., P.M., MT.
KOOTENAI NATIONAL FOREST
LINCOLN COUNTY, MONTANA
JULY 1996

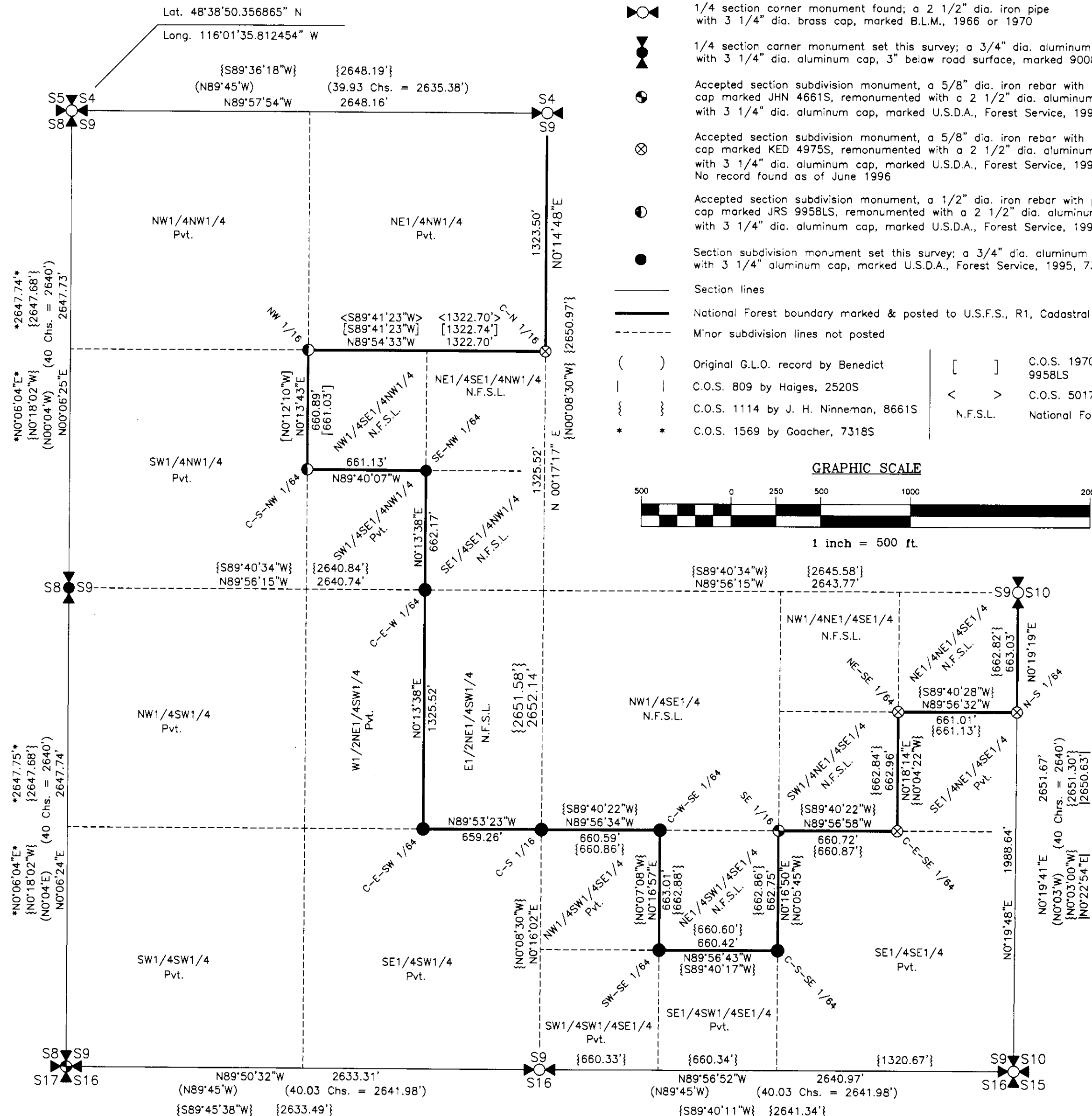
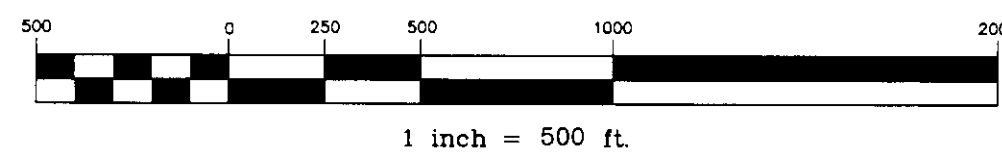
FOREST SUPERVISOR'S CERTIFICATE

This survey was made at my request for National Forest Management purposes.
Robert L. Schrenk
Robert L. Schrenk, Forest Supervisor
Date 26 July 96

LEGEND

- Section corner monument found; a 2 1/2" dia. iron pipe with 3 1/4" dia. brass cap, marked B.L.M., 1966 or 1970.
- Section corner monument found and accepted; a 1" dia. iron pipe with 2 1/2" dia. brass cap, flush with road surface, marked 534ES, 1971.
- 1/4 section corner monument found; a 2 1/2" dia. iron pipe with 3 1/4" dia. brass cap, marked B.L.M., 1966 or 1970.
- 1/4 section corner monument set this survey; a 3/4" dia. aluminum rod with 3 1/4" dia. aluminum cap, 3" below road surface, marked 9008LS, 1996.
- Accepted section subdivision monument, a 5/8" dia. iron rebar with plastic cap marked JHN 4661S, remonumented with a 2 1/2" dia. aluminum pipe with 3 1/4" dia. aluminum cap, marked U.S.D.A., Forest Service, 1996, 9008LS.
- Accepted section subdivision monument, a 5/8" dia. iron rebar with plastic cap marked KED 4975S, remonumented with a 2 1/2" dia. aluminum pipe with 3 1/4" dia. aluminum cap, marked U.S.D.A., Forest Service, 1996, 9008LS. No record found as of June 1996.
- Accepted section subdivision monument, a 1/2" dia. iron rebar with plastic cap marked JRS 9958LS, remonumented with a 2 1/2" dia. aluminum pipe with 3 1/4" dia. aluminum cap, marked U.S.D.A., Forest Service, 1996, 9008LS.
- Section subdivision monument set this survey; a 3/4" dia. aluminum rod with 3 1/4" dia. aluminum cap, marked U.S.D.A., Forest Service, 1995, 7322LS.
- Section lines
- National Forest boundary marked & posted to U.S.F.S., R1, Cadastral Standards
- Minor subdivision lines not posted
- () Original G.L.O. record by Benedict
- | | C.O.S. 809 by Haiges, 2520S
- { } C.O.S. 1114 by J. H. Ninneman, 8661S
- * * C.O.S. 1569 by Goacher, 7318S

GRAPHIC SCALE



HISTORY OF SURVEY

- 1899, U.S. Geological Survey record of Idaho - Montana boundary by D. L. Reaburn.
- 1905, Original G.L.O. Township Boundary & Subdivision by Allen B. Benedict.
- 1926, Warrant Deed, recorded Bk. 6, Pg. 289 and Bk. 56, Pgs. 509, 510, and 590 at Lincoln County Courthouse for a 60 ft. strip of land for road Right-of-way purposes.
- 1966, B.L.M. corner remonumentation of North & South 1/4 cors. and Northwest cor. of sec. 9 by Woodrow E. Damm et al.
- 1970, B.L.M. remonumentation of Southeast corner & East 1/4 cor. sec. 9 by Joseph E. French.
- 1971, Plat No. 2224, creates a small tract of land in the NW1/4NW1/4SW1/4 Sec. 9 by Jack W. Ninneman, Reg. No. 535ES.
- 1980, C.O.S. No. 809, retraces east line of sec. 9 by M.L. Haiges, Reg. No. 2520S.
- 1980, C.O.S. No. 781, creates irregular tracts in the SE1/4 of Sec. 9 by Jack H. Ninneman, Reg. No. 4661S.
- 1981, C.O.S. No. 917, retraces west line of Sec. 9 by Jack H. Ninneman, Reg. No. 4661S.
- 1981, C.O.S. No. 921, creates irregular tracts in the SE1/4 of Sec. 9 by Jack H. Ninneman, Reg. No. 4661S.
- 1982, C.O.S. No. 1079, retraces west half of the south line of Sec. 9 by Jack H. Ninneman, Reg. No. 4661S.
- 1982, C.O.S. No. 1114, creates irregular tracts in the SE1/4 of Sec. 9 by Jack H. Ninneman, Reg. No. 4661S.
- 1984, C.O.S. No. 1281, retraces south line of Sec. 9 by Jack H. Ninneman, Reg. No. 4661S.
- 1985, C.O.S. No. 1406, amends description on Plat No. 2224, in the NW1/4NW1/4SW1/4, Sec. 9 by Jack H. Ninneman, Reg. No. 4661S.
- 1987, C.O.S. No. 1569, retraces west line of Sec. 9 by Richard G. Goacher, Reg. No. 7318S.
- 1992, C.O.S. No. 1970, creates a tract of land in SW1/4NW1/4, Sec. 9 by James R. Staples, Reg. No. 9958LS.
- 1992, C.O.S. No. 1976, retraces south line of Sec. 9 by James R. Staples, Reg. No. 9958LS.
- 1993, Plat No. 5017, Lime Creek (minor) Subdivision in Sec. 9 by Kenneth E. Davis, Reg. No. 4975S.
- 1993, C.O.S. 2142, Retraces west line of Sec. 9 by Kenneth E. Davis, Reg. No. 4975S.

BASIS OF BEARING

Global Positioning System ties to N.G.S. control stations; Central and Curley N.A.D. 83.

LEGAL DESCRIPTION OF PRIVATE OWNERSHIP:

SE1/4NE1/4SE1/4, SE1/4SE1/4S1/2SW1/4SE1/4, NW1/4SW1/4SE1/4, W1/2NE1/4SW1/4, SE1/4SW1/4, SW1/4SW1/4, NW1/4SW1/4, NE1/4NW1/4, SW1/4SE1/4NW1/4, SW1/4NW1/4, NW1/4NW1/4.

LEGAL DESCRIPTION OF NATIONAL FOREST SYSTEM LANDS:

NE1/4NE1/4SE1/4, SW1/4NE1/4SE1/4, NW1/4NE1/4SE1/4, NE1/4SW1/4SE1/4, NW1/4SE1/4, E1/2NE1/4SW1/4, NE1/4SE1/4NW1/4, SE1/4SE1/4NW1/4, NW1/4SE1/4NW1/4.

SURVEYOR'S CERTIFICATE:

I hereby certify that I am a Registered Land Surveyor in the State of Montana, that the survey shown on this Certificate of Survey has been prepared in accordance with Montana Code Annotated (Sections 76-3-101 through 76-3-614) and the Lincoln County regulations adopted pursuant thereto.

Ronald A. Pearson
Ronald A. Pearson, Montana Reg. No. 9008LS Date 7/26/96

CERTIFICATE OF EXAMINING OFFICIAL:

Approved this 31 day of July, 1996, A.D.

Examining Official *David R. Cramer*

Approved *David R. Cramer*
Chairman, Lincoln County Commissioners

CERTIFICATE OF CLERK AND RECORDER:

State of Montana, County of Lincoln, filed this 31st day

of July, 1996 A.D. at 10:00 o'clock A.M.

Carol R. Cummings by *James R. Staples*
County Clerk Recorder Deputy

CERTIFICATE OF SURVEY NO. 2476

SHEET 1 OF 2

CERTIFICATE OF SURVEY

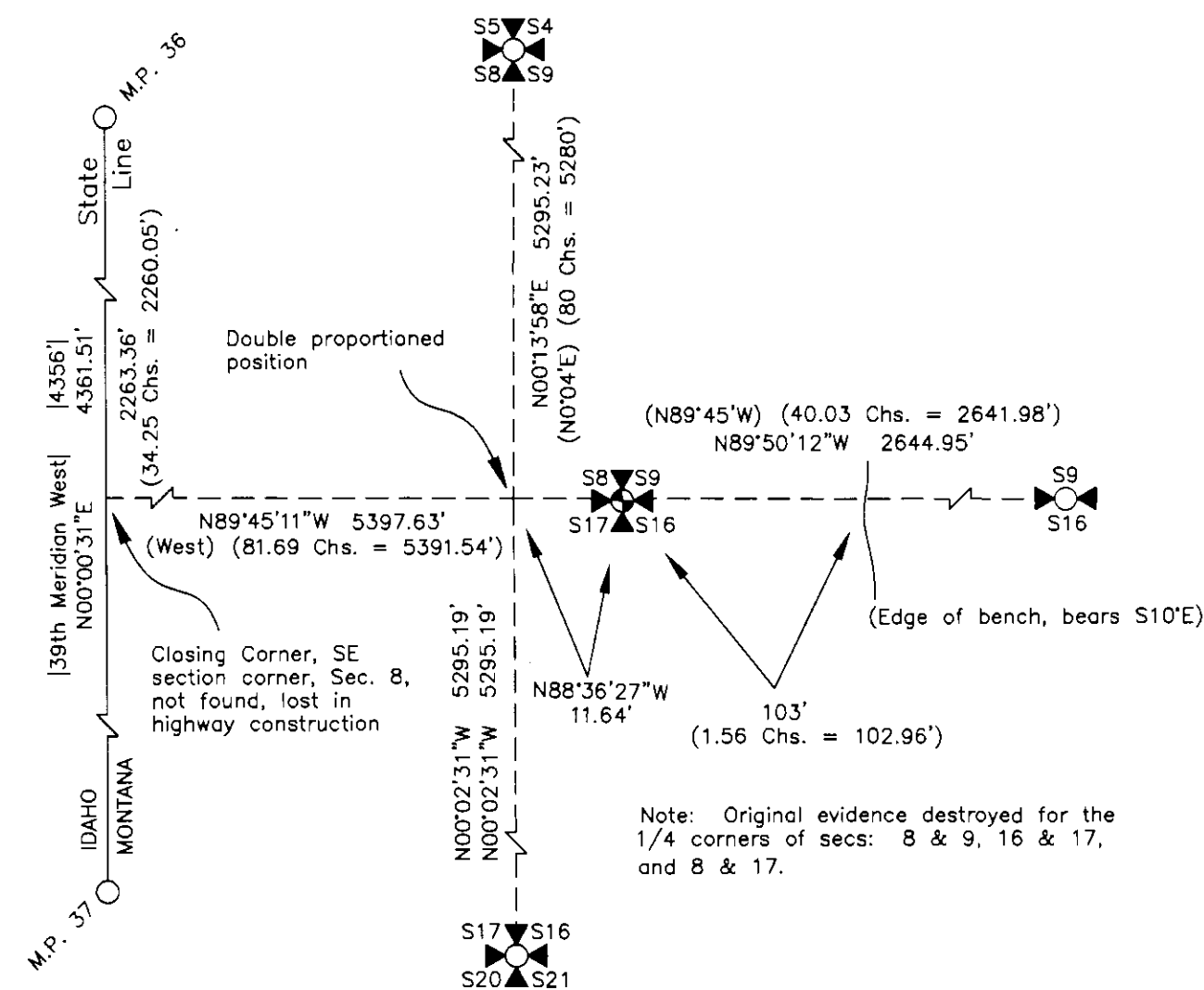
DEPENDENT RESURVEY AND SECTION SUBDIVISION

SE1/4, SW1/4, NW1/4 OF SECTION 9, T.33N., R.34W., P.M.MT.

KOOTENAI NATIONAL FOREST LINCOLN COUNTY, MONTANA

JULY 1996

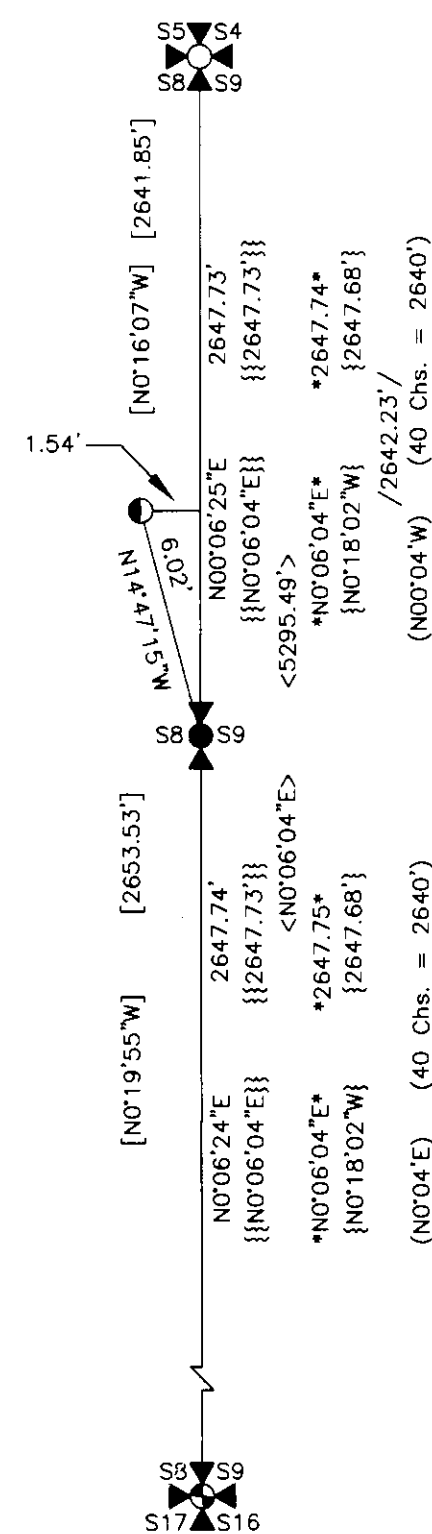
DETAIL FOR SECTION CORNER OF 8, 9, 16, & 17
(No Scale)



LEGEND

- Section corner monument found; a 2 1/2" dia. iron pipe with 3 1/4" dia. brass cap, marked B.L.M., 1966 or 1970.
- Section corner monument found and accepted; a 1" dia. iron pipe with 2 1/2" dia. brass cap, flush with road surface, marked 534ES, 1971
- 1/4 section corner monument found; a 2 1/2" dia. iron pipe with 3 1/4" dia. brass cap, marked B.L.M., 1966 or 1970
- 1/4 section corner monument set this survey; a 3/4" dia. aluminum rod with 3 1/4" dia. aluminum cap, 3" below road surface, marked 9008LS, 1996
- 1/4 section corner monument found/not accepted, 3 1/2" dia. aluminum cap marked RLS 9958, 1/2" below road surface.
- Section lines
- Proportional line
- Plot 2224 by J.W. Ninneman, 535ES
- Original G.L.O. record by Benedict
- Original U.S.G.S. record by Reaburn
- C.O.S. 917 by J. H. Ninneman, 4661S
- C.O.S.s 781 & 1114 by J. H. Ninneman, 4661S
- C.O.S. 1970 by Staples, 9958LS
- C.O.S. 2142 by Davis, 4975S
- C.O.S. 1569 by Goacher, 7318S

DETAIL FOR 1/4 CORNER OF SECS. 8 & 9
(No Scale)



METHOD OF SURVEY

Control was accomplished using survey grade Global Positioning System receivers Trimble 4000 SSE and a constrained Least Squares Adjustment, based on N.G.S. first order control stations; Central and Curley. Secondary traverse done with Total Station - E.D.M.

BASIS OF BEARING

Global Positioning System ties to N.G.S. control stations; Central and Curley N.A.D. 83.

SURVEYOR'S NOTES

An examination of all available records of previous survey, corner records, and deeds was completed and I evaluated several corners of question.

1.) I found a set brass cap on a 1" diam. iron pipe by J.W.N., 534ES, marked section corner, section 8, 9, 16, and 17. J.W.N., 534ES. Notes and record show corner set by single proportion measurement on the north-south section line between the section corner 8, 9, 16, & 17 and section corner 4, 5, 8, & 9. The record of surveys showed the 1/4 corners between section 8 and 17; section 8 and 9; and section 16 and 17 lost. All subsequent surveys established the missing quarter corners by single proportion measurement using the found brass cap set by J.W.N., 534ES for the section corner of Secs. 8, 9, 16, and 17. I retraced the original record, surveying the found State Line monuments and calculating the closing corner position for the southwest section corner of section 8. A double proportion position for the section corner 8, 9, 16, & 17 was calculated using the calculated closing corner for SW cor. section 8, the found B.L.M. brass cap for the south 1/4 of Sec. 9, the found B.L.M. brass cap for the northwest sec. cor. Sec. 9, and the found B.L.M. brass cap for the southwest sec. cor. sec. 16. The Double proportion position was very close north-south but fell approx. 12' west of the J.W.N., 534ES found sec. cor. In addition the original 1905 G.L.O. record called 1.56 chains (102.96') west from edge of bench to corner. Our survey tie to J.W.N., 534ES found corner from a very abrupt edge of bench was 103' west. I accepted J.W.N., 534ES found corner based on the original G.L.O. topographic call, being the best original evidence of the original corner position.

2.) I also evaluated a found 3 1/4" dia. aluminum cap by J.R.S., 9958LS and several prior records of survey calculated positions, used by three prior surveyors for the 1/4 corner between section 8 and 9. The found aluminum cap by J.R.S., 9958LS was a remonumentation of a found boat spike per C of S No. 1970 in 1992. A 1971 plat No. 2224 by J.W.N., 535ES shows a found boat spike, but was not accepted as the 1/4 section corner between Sec. 8 and 9. No record was found to confirm that the boat spike was set for the 1/4 corner sec. 8 & 9. Thus I single proportioned a position for the 1/4 cor. sec. 8 & 9. My computed position fell 6' south of J.R.S., 9958LS remonumented boat spike. I also retraced a 1926 Right-of-Way deed to confirm the single proportion position. My single proportioned position also compared to C.O.S. No. 1569 by Goacher, 7318S in 1987, and C.O.S. No. 1114 by J.H.N., 4661S in 1982, calculated positions. It is unfortunate that the previous surveyors did not monument this controlling corner to alleviate future discrepancies; I monumented my computed position and by accepted B.L.M. Manual of Survey Instructions, subdivided section 9. My computed position for the subdivision corners and found previous set subdivision corners were compared and all previous set subdivisional corners were accepted.