

CERTIFICATE OF SURVEY
DEPENDENT RESURVEY AND SECTION SUBDIVISION
OF SECTION 20 T.34N., R.25W., P.M.,MT.

KOOTENAI NATIONAL FOREST
 LINCOLN COUNTY, MONTANA

DECEMBER 1995

FOREST SUPERVISOR'S CERTIFICATE

This survey was made at my request for National Forest Management purposes.
Robert L. Schrenk
 Robert L. Schrenk, Forest Supervisor
 12-18-95
 Date

HISTORY OF SURVEY

1894, Original, G.L.O. Township Subdivision, by Frank L. Sizer & Abram L. Jaqueth
 1960 = 1961, B.L.M. Remonumentation of Original Corners, by David R. Cunningham
 1974, C.O.S. No. 63, Retracement and Subdivision of Section 17, by Jack W. Ninneman, Reg. No. 534ES
 1980, C.O.S. No. 777, Retracement and Subdivision of Section 17, by D. K. Marquardt, Reg. No. 2989ES
 1983, C.O.S. No. 1149, Retracement and Subdivision of Section 29, by Thomas C. Hill, Reg. No. 5612S

METHOD OF SURVEY

A one second, Total Station and Data Collector was used with closed traverse procedures to tie the original controlling corners. The location of the monuments set this survey meet the positional tolerance standard referenced in the U.S.D.A. Forest Service, Region One, Cadastral Contract Specification Manual, dated 1987. The Starnet Network Analysis on Least Squares Adjustment Program was used for control network adjustment.

SURVEYOR'S NOTES

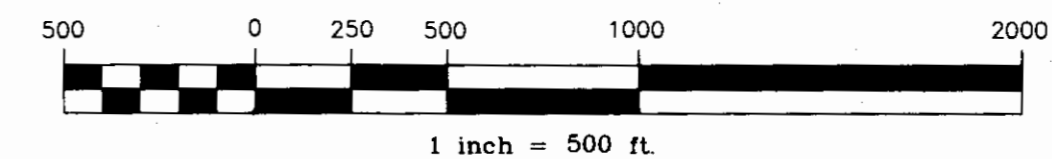
All Controlling Corners used to subdivide this section were recovered original G.L.O. corners or B.L.M. remonumentation thereof.

Except: the 1/4 cor. bet secs. 20 & 29, which was Single Proportioned between section corners 19,20,29,30 & 20,21,28,29 as indicated in C.O.S. 1149.

BASIS OF BEARING

Bearing based on solar observation from C.O.S. 1149, Section Line between sections 20 & 29.

SCALE



SURVEYOR'S CERTIFICATE:

I hereby certify that I am a registered land surveyor in the State of Montana, that the survey shown on this Certificate of Survey has been prepared in accordance with Montana Code Annotated (Sections 76-3-101 through 76-3-614) and the Lincoln County regulations adopted pursuant thereto.

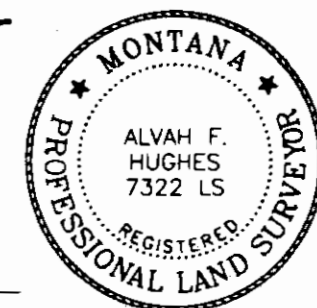
Alvah F. Hughes 7322LS 12-18-95
 Alvah F. Hughes, Montana Reg. No. 7322LS Date

CERTIFICATE OF EXAMINING OFFICIAL:

Approved this 20th day of DEC 1995, A.D.

Paul J. Buckholt
 Examining Official

Approved _____
 Chairman, Lincoln County Commissioners



CERTIFICATE OF CLERK AND RECORDER:

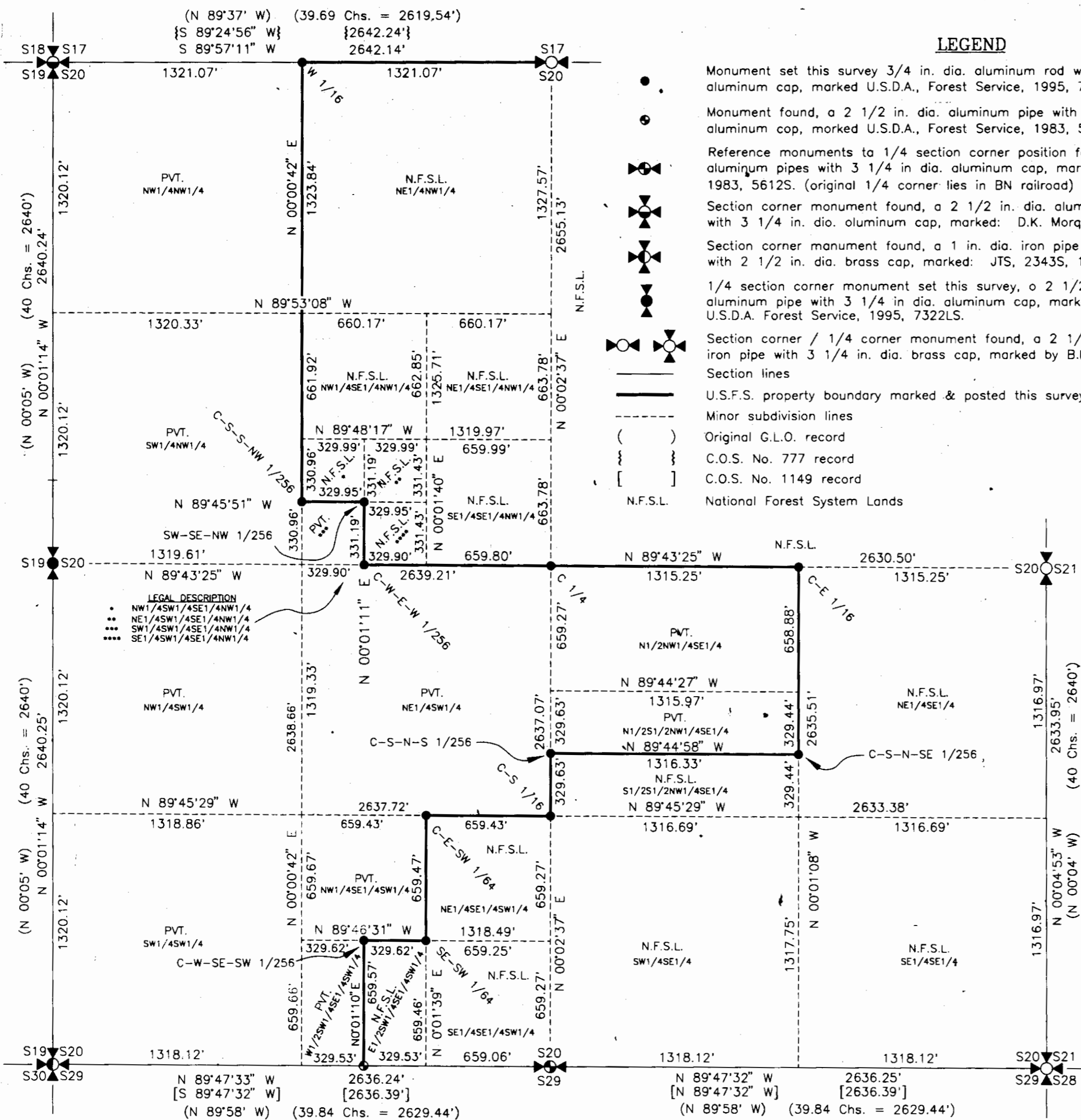
State of Montana, County of Lincoln, filed this 21st day

of December 1995, A.D. at 8:35 o'clock
Cora M. Cummings by *Jeanne Davis*
 County Clerk Recorder Deputy

CERTIFICATE OF SURVEY NO. 2406

LEGEND

- Monument set this survey 3/4 in. dia. aluminum rod with 3 1/4 in. dia. aluminum cap, marked U.S.D.A., Forest Service, 1995, 7322LS.
- Monument found, a 2 1/2 in. dia. aluminum pipe with 3 1/4 in. dia. aluminum cap, marked U.S.D.A., Forest Service, 1983, 5612S.
- Reference monuments to 1/4 section corner position found, two 2 1/2 in. dia. aluminum pipes with 3 1/4 in. dia. aluminum cap, marked U.S.D.A., Forest Service 1983, 5612S. (original 1/4 corner lies in BN railroad)
- Section corner monument found, a 2 1/2 in. dia. aluminum pipe with 3 1/4 in. dia. aluminum cap, marked: D.K. Marquardt, 2989ES, 1981.
- Section corner monument found, a 1 in. dia. iron pipe with 2 1/2 in. dia. brass cap, marked: JTS, 2343S, 1965.
- 1/4 section corner monument set this survey, a 2 1/2 in. dia. aluminum pipe with 3 1/4 in. dia. aluminum cap, marked U.S.D.A. Forest Service, 1995, 7322LS.
- Section corner / 1/4 corner monument found, a 2 1/2 in. dia. iron pipe with 3 1/4 in. dia. brass cap, marked by B.L.M. in 1961.
- Section lines
- U.S.F.S. property boundary marked & posted this survey
- - - Minor subdivision lines
- () Original G.L.O. record
- { } C.O.S. No. 777 record
- [] C.O.S. No. 1149 record
- N.F.S.L. National Forest System Lands



LEGAL DESCRIPTION OF PRIVATE OWNERSHIP

N1/2NW1/4SE1/4, N1/2S1/2NW1/4SE1/4, NW1/4SE1/4SW1/4, W1/2SW1/4SE1/4SW1/4, SW1/4SW1/4, NW1/4SW1/4, NE1/4SW1/4, SW1/4SW1/4SE1/4NW1/4, SW1/4NW1/4, NW1/4NW1/4

LEGAL DESCRIPTION OF NATIONAL FOREST SYSTEM LANDS

NE1/4SE1/4, SE1/4SE1/4, SW1/4SE1/4, S1/2S1/2NW1/4SE1/4, NE1/4SE1/4SW1/4, SE1/4SE1/4SW1/4, E1/2SW1/4SE1/4SW1/4, NE1/4NW1/4, NE1/4SE1/4NW1/4, SE1/4SE1/4NW1/4, NE1/4SW1/4SE1/4NW1/4, SE1/4SW1/4SE1/4NW1/4, NW1/4SW1/4SE1/4NW1/4, NW1/4SE1/4NW1/4