

CERTIFICATE OF SURVEY RETRACEMENT

LOT 1 OF BLOCK 10 OF KOOTENAI VISTA ANNEX
IN THE NW 1/4 OF SECTION 27, TWP 32N., R 34W., P.M.M.
DATE: JUNE 1995 FOR: EIDE

PURPOSE OF SURVEY

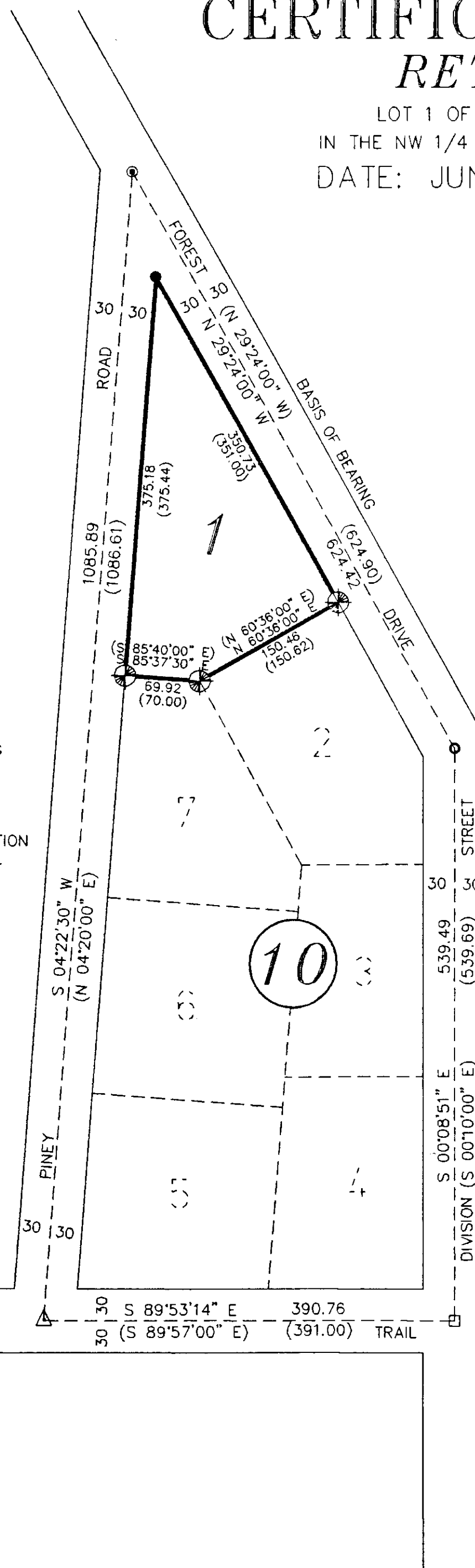
The purpose of this survey is to retrace the exterior boundaries of an existing tract of record, and no division of land is hereby created; therefore, this survey is exempt from review, being completed pursuant to Section 75-3-404, M.C.A.

LEGEND

- ⊕ SET 5/8 INCH DIAMETER REBAR WITH A 1 1/4 INCH DIAMETER PLASTIC CAP STAMPED KED 4975-S
- ⊙ FOUND 3/4 INCH DIAMETER REBAR IN A 6 INCH DIAMETER STEEL MONUMENT CASING @ THE INTERSECTION OF FOREST DRIVE AND PINEY ROAD
- FOUND 3/4 INCH DIAMETER REBAR IN A 6 INCH DIAMETER STEEL MONUMENT CASING @ THE INTERSECTION OF FOREST DRIVE AND DIVISION STREET
- △ FOUND 3/8 INCH DIAMETER BOLT IN A 6 INCH DIAMETER STEEL MONUMENT CASING @ THE INTERSECTION OF PINEY ROAD AND BEACHWARD TRAIL
- FOUND RR SPIKE IN A 6 INCH DIAMETER STEEL MONUMENT CASING @ THE INTERSECTION OF DIVISION STREET AND BEACHWARD TRAIL
- COMPUTED POINT, NOT FOUND OR SET
- () RECORD PER ORIGINAL KOOTENAI VISTA ANNEX PLAT



BEACHWARD



GRAPHIC SCALE



(IN FEET)
1 inch = 100 ft.

EXAMINED AND APPROVED FOR LINCOLN COUNTY BY:

DATE: 9-1-95

APPROVED:

Chairman, Lincoln County, Montana Commissioners

STATE OF MONTANA
COUNTY OF LINCOLN

Filed on this 1st day of Sept, 1995 A.D. at 2:05

O'clock P.M.

County Clerk and Recorder

Deputy