

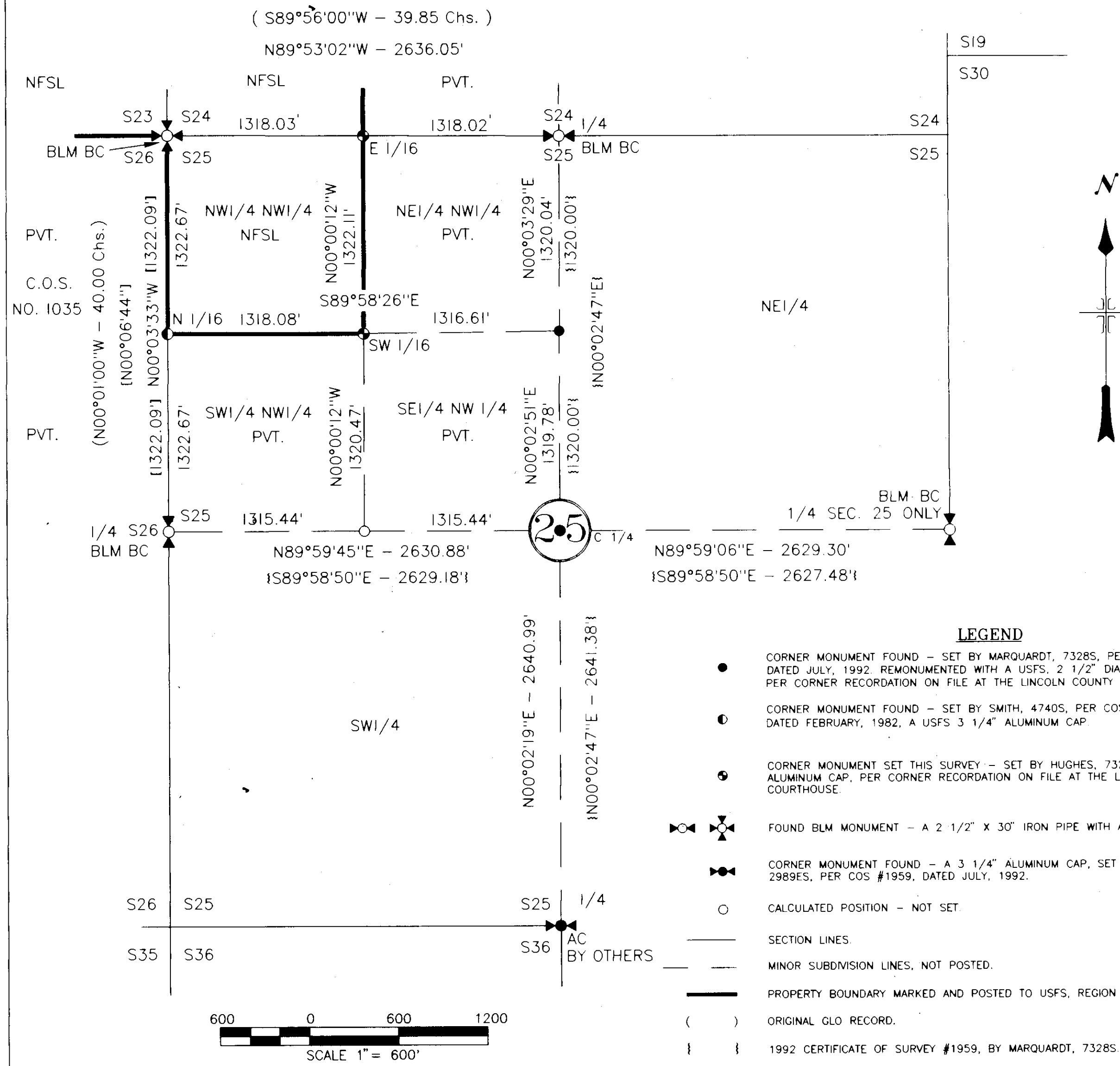
CERTIFICATE OF SURVEY

DEPENDENT RESURVEY AND SECTION SUBDIVISION

SECTION 25, T.33N., R.26W., P.M., MT.

KOOTENAI NATIONAL FOREST
LINCOLN COUNTY, MONTANA

DECEMBER 1994



FOREST SUPERVISOR'S CERTIFICATE
This survey was made at my request for National Forest Management purposes.
Robert L. Schrenk
Robert L. Schrenk, Forest Supervisor
ZIMARDS
Date

HISTORY OF SURVEY
1903 - Original GLO survey of township lines by Rinearson & Smith.
1903 - Original GLO survey of subdivision lines by Rinearson & Smith.
1960 - BLM Remonumentation of original corners by Stephens & Cunningham.
1961 - BLM Remonumentation of original corners by Stephens & Cunningham.
1982 - COS #1035 by S.R. Smith, Montana Registration No. 4740S.
1992 - COS #1959 by D. Marquardt, Montana Registration No. 7328S.

METHOD OF SURVEY
A one second Total Station and Data Collector was used with closed traverse procedures to tie original controlling corners. The location of the monuments set this survey meet the positional tolerance standard referenced in the USDA, Forest Service, Region One, Cadastral Contract Specification Manual, dated March 1987. The StarNet Network Analysis and Least Squares Adjustment Program was used for control net adjustment.

SURVEYOR'S NOTES
All controlling corners used to subdivide these sections were recovered original GLO corners or BLM Remonumentation thereof.
Exceptions: The S 1/4 corner of Section 25 was set by Dean Marquardt, 2989ES, per COS #1959, using Single Proportionate Method. The C 1/4 & CN 1/16th corners of Section 25 were set by Dawn Marquardt, 7328S, per COS #1959, using standard section subdivision methods. The N 1/16th corner on the west section line of Section 25 was set by S.R. Smith, 4740S, per COS #1035.

I accept all the corners noted above as being correct and utilize there positions for the subdivision of the NW 1/4 of Section 25.
Corner Recordations have been filed with the Clerk & Recorder's Office, Lincoln County Courthouse, Libby, Montana, for all found or set corners shown on this Certificate.

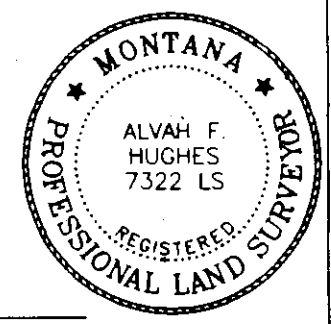
BASIS OF BEARING
Bearings are based on a Solar Observation.

PURPOSE OF SURVEY
The purpose of this survey is to locate upon the ground, the title lines of record between private and National Forest System Lands. No division of land is hereby created.

LEGAL DESCRIPTION
NFSL: Sec. 23 - E1/2 SE1/4, Sec. 24 - W1/2 NW1/4; W1/2 SW1/4.
Sec. 25 - NW1/4 NW1/4.
PVT.: Sec. 23 - NE1/4; W1/2 SE1/4, Sec. 24 - E1/2 NW1/4; E1/2 SW1/4.
Sec. 25 - NE1/4 NW1/4; SW1/4 NW1/4; SE1/4 NW1/4.

SURVEYOR'S CERTIFICATE:
I hereby certify that I am a registered land surveyor in the State of Montana, that the survey shown on this Certificate of Survey has been prepared in accordance with Montana Code Annotated (Sections 76-3-101 through 76-3-614) and the Lincoln County regulations adopted pursuant thereto.
Alvah F. Hughes 7322LS 3/21/95
Montana Registration No.

CERTIFICATE OF EXAMINING OFFICIAL:
Approved this 23rd day of MARCH 1995, A.D.
Bill J. Brockhoff
Examining Official
Approved *Harold R. Cramer*
Chairman, Lincoln County Commissioners



CERTIFICATE OF CLERK AND RECORDER:
State of Montana, County of Lincoln, filed this 23rd day of March 1995, A.D. at 9:55 o'clock
Coral M. Cumming by *Jeanie Dunlap*
County Clerk Recorder Deputy

CERTIFICATE OF SURVEY NO. 2304

- LEGEND**
- CORNER MONUMENT FOUND - SET BY MARQUARDT, 7328S, PER COS #1959, DATED JULY, 1992. REMONUMENTED WITH A USFS, 2 1/2" DIA. ALUMINUM PIPE, PER CORNER RECORDATION ON FILE AT THE LINCOLN COUNTY COURTHOUSE.
 - CORNER MONUMENT FOUND - SET BY SMITH, 4740S, PER COS #1035, DATED FEBRUARY, 1982, A USFS 3 1/4" ALUMINUM CAP.
 - CORNER MONUMENT SET THIS SURVEY - SET BY HUGHES, 7322LS, A USFS 3 1/4" ALUMINUM CAP, PER CORNER RECORDATION ON FILE AT THE LINCOLN COUNTY COURTHOUSE.
 - ⊕ FOUND BLM MONUMENT - A 2 1/2" X 30" IRON PIPE WITH A 3 1/4" BRASS CAP
 - ⊕ CORNER MONUMENT FOUND - A 3 1/4" ALUMINUM CAP, SET BY MARQUARDT, 2989ES, PER COS #1959, DATED JULY, 1992.
 - CALCULATED POSITION - NOT SET
 - SECTION LINES.
 - MINOR SUBDIVISION LINES, NOT POSTED.
 - PROPERTY BOUNDARY MARKED AND POSTED TO USFS, REGION ONE STANDARDS
 - () ORIGINAL GLO RECORD.
 - { } 1992 CERTIFICATE OF SURVEY #1959, BY MARQUARDT, 7328S.
 - [] 1982 CERTIFICATE OF SURVEY #1035, BY SMITH, 4740S.

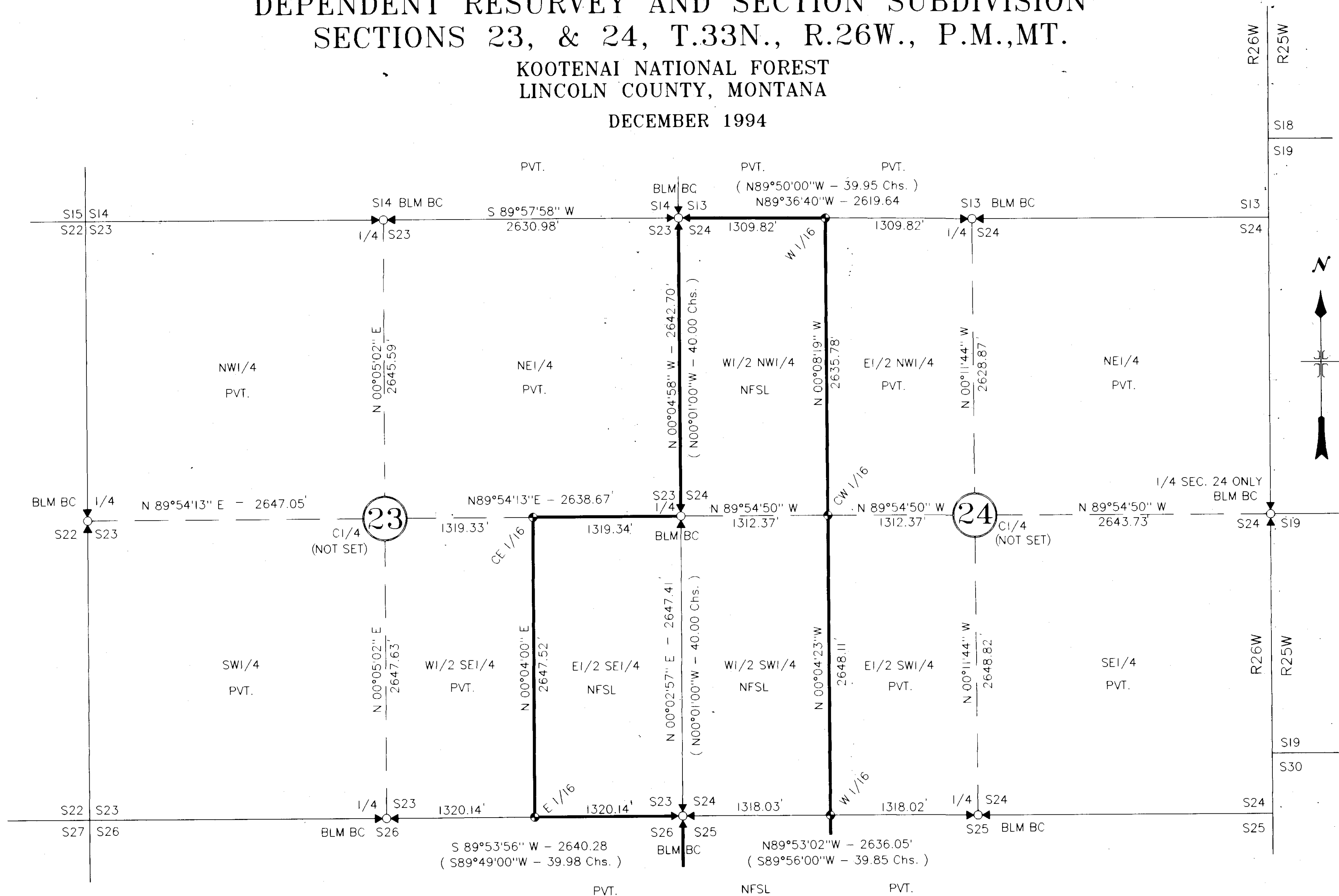
CERTIFICATE OF SURVEY

DEPENDENT RESURVEY AND SECTION SUBDIVISION

SECTIONS 23, & 24, T.33N., R.26W., P.M., MT.

KOOTENAI NATIONAL FOREST
LINCOLN COUNTY, MONTANA

DECEMBER 1994



CERTIFICATE OF SURVEY NO. 2304
SHEET 2 OF 2