

CERTIFICATE OF SURVEY

RETRACEMENT AND DIVISION OF TRACTS 1 & 2 LYING IN
NW1/4 SW1/4, SECTION 11, T.36N., R.27W., P.M., MT.

KOOTENAI NATIONAL FOREST
LINCOLN COUNTY, MONTANA
JANUARY 1995

PURPOSE OF SURVEY

The purpose of this survey is to transfer an irregular tract of land in Lincoln County, Montana from the United States Forest Service to Lincoln County as per instructions of Senate Bill No. 528, P.L. 103-398 (108 Stat. 4162) dated October 22, 1994.

HISTORY OF SURVEY

1893 - Original Township subdivision by Peter McCardell & Abram Jacqueth.
1957 - Plat No. 500, creates irregular parcel of land, tracts 1 & 2 by J. Peltier et al.
1973 - Plat No. 2030, subdivides section 11 by Robert S. Custer, Reg. No. 3325S.
1978 - C.O.S. No. 443, subdivides adjoining section 10 by Charles W. Doyle, Reg. No. 2516S.
1981 - C.O.S. No. 911, subdivides section 11 by Dean K. Marquardt, Reg. No. 2989ES.
1985 - Unrecorded U.S.F.S. survey and monumentation of north boundary of Tract 1, Plat No. 500.
1986 - C.O.S. No. 1416, S.T.A.-MT-0018, relocation of common boundary by Thomas C. Hill, Reg. No. 5612S.

METHOD OF SURVEY

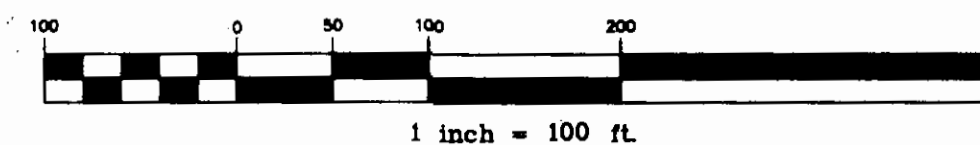
Total station theodolite - EDM traverse.

BASIS OF BEARING

Bearings were rotated to record bearing as shown on C.O.S. No. 1416, Cor. 1 of Tract B to Cor. 4 of Tract B.

LEGEND

- Corner monument set this survey; A 3/4" x 30" aluminum rod with 3 1/4" dia. aluminum cap marked 7322LS
- Found unrecorded corner monument; A 3/4" x 30" aluminum rod with 3 1/4" dia. aluminum cap marked U.S.F.S., 1985, 5612S.
- ⊙ Found a yellow plastic cap on rebar, 1" below road surface, marked Doyle, 2516S.
- ⊙ Found 3/4" x 30" aluminum rod with 3 1/4" dia. aluminum cap marked U.S.F.S., 1986, 5612S per C.O.S. No. 1416.
- ⊕ Found Section Corner monument, A 2 1/2" dia. iron pipe with 3 1/4" dia. brass cap marked B.L.M. in 1960.
- ⊗ Found a 1/4" Section Corner monument, a yellow plastic cap on rebar, 2" below road surface, marked Doyle, 2516S.
- Tract line per Plat No. 500
- Property boundary prior to S.T.A.-MT-0018.
- Property lines/prior boundary
- New property boundary
- Centerline of Highway/road
- { } Plat No. 500 record
- [] Certificate of Survey No. 1416 record.
- N.F.S.L. National Forest System Lands



SURVEYOR'S CERTIFICATE:

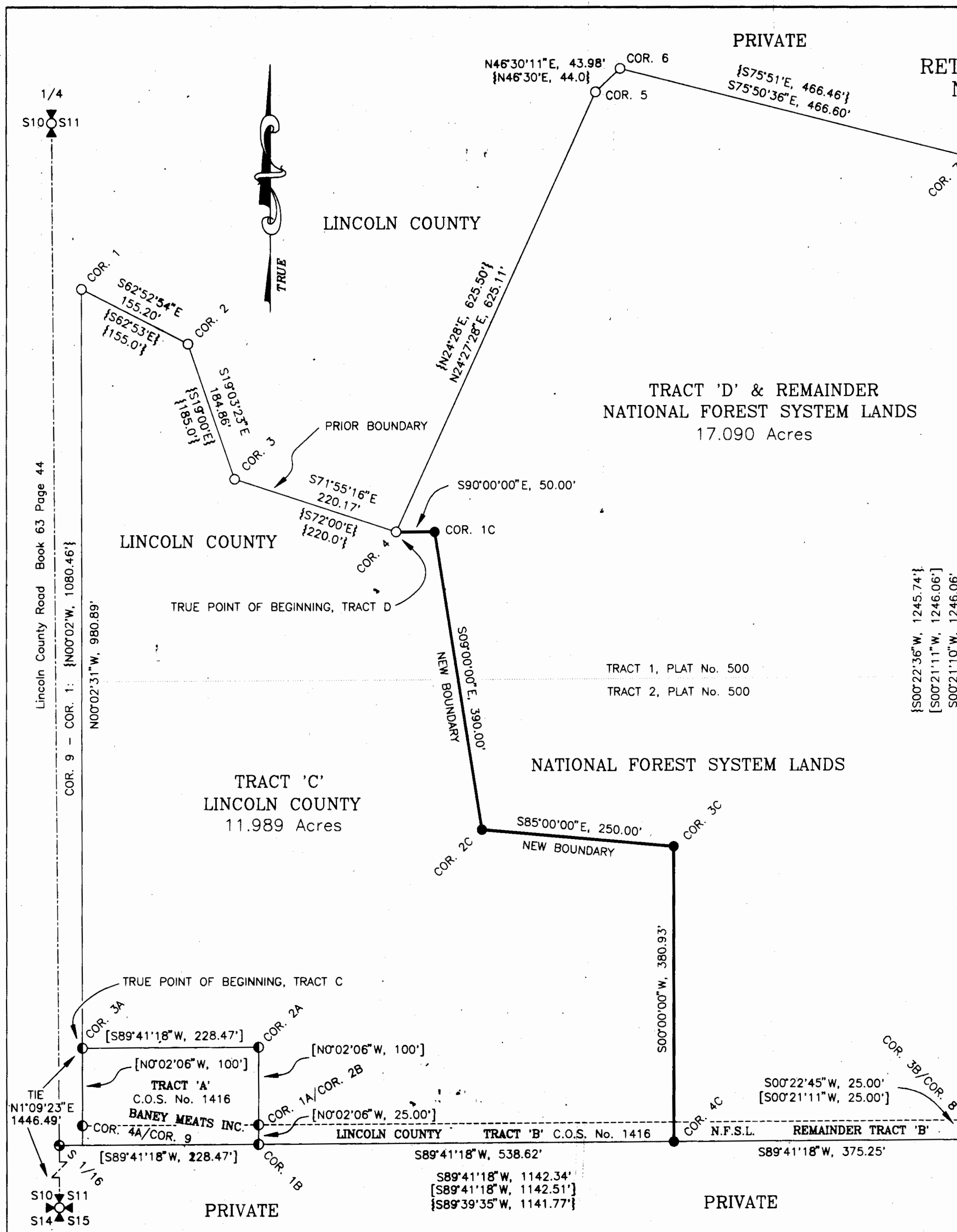
I hereby certify that I am a registered land surveyor in the State of Montana, that the survey shown on this Certificate of Survey has been prepared in accordance with Montana Code Annotated (Sections 76-3-101 through 76-3-614) and the Lincoln County regulations adopted pursuant thereto.

Alvah F. Hughes 7322LS 3/21/95
Alvah F. Hughes, Montana Reg. No. 7322 LS Date

CERTIFICATE OF CLERK AND RECORDER

State of Montana, County of Lincoln, filed this 23rd day of March 1995, A.D. at 9:20 o'clock A.M.
by *Cord R. Cumming* by *Francie Dennis*
County Clerk Recorder Deputy

CERTIFICATE OF SURVEY No. 2302 SHEET 1 OF 2



CERTIFICATE OF SURVEY

RETRACEMENT AND DIVISION OF TRACTS 1 & 2 LYING IN
NW1/4 SW1/4, SECTION 11, T.36N., R.27W., P.M.,MT.
KOOTENAI NATIONAL FOREST
LINCOLN COUNTY, MONTANA

JANUARY 1995

LEGAL DESCRIPTION TRACT C

A tract of land lying in the Northwest 1/4 of the Southwest 1/4 of Section 11, Township 36 North, Range 27 West, Principal Meridian, Montana, in the county of Lincoln, in the State of Montana, and more particularly described as:

Commencing at corner 3A and the Northwest corner of tract A, a 3/4 inch diameter aluminum rod, with a 3 1/4 inch diameter aluminum cap, marked: COR. 3 TRACT A, STA-MT-0018, 5612S, 1986 which is N1°09'23"E, 1446.49 feet distance from the Southwest section corner of section 11, an iron pipe, 2 1/2 inch in diameter with a 3 1/4 inch diameter brass cap, marked: T36N, R27W, S10, S11, S14, AND S15, Bureau of Land Management, 1960. Corner 3A being the True Point of Beginning; thence N0°02'31"W and along the County Road Right of Way, a 60 foot strip of land as per book 63 page 44, 980.89 feet distance to corner 1, a 3/4 inch diameter aluminum rod with a 3 1/4 inch diameter aluminum cap, marked: COR. 1 TRACT 1, 5612S, 1985; thence S62°52'54"E, 155.20 feet distance to Corner 2, a 3/4 inch diameter aluminum rod with a 3 1/4 inch diameter aluminum cap, marked: COR. 2 TRACT 1, 5612S, 1985; thence S19°03'23"E, 184.86 feet to Corner 3, a 3/4 inch diameter aluminum rod with a 3 1/4 inch diameter aluminum cap, marked: COR. 3 TRACT 1, 5612S, 1985; thence S71°55'16"E, 220.17 feet distance to Corner 4, a 3/4 inch diameter aluminum rod with a 3 1/4 inch diameter aluminum cap, marked: COR. 4 TRACT 1, 5612S, 1985; thence S90°00'00"E, 50.00 feet distance to Corner 1C, a 3/4 inch diameter aluminum rod with a 3 1/4 inch diameter aluminum cap, marked: COR. 1 TRACT C, 7322LS, 1995; thence S9°00'00"E, 390.00 feet to corner 2C, a 3/4 inch diameter aluminum rod with a 3 1/4 inch diameter aluminum cap marked: COR. 2 TRACT C, 7322LS, 1995, thence S85°00'00"E, 250 feet distance to corner 3C, a 3 1/4 inch diameter aluminum cap, marked: COR. 3 TRACT C, 7322LS, 1995; thence S0°00'00"W, 380.93 feet distance to corner 4C and intersection with south line of Tract B, a 3 1/4 inch diameter aluminum cap, marked: COR. 4 TRACT C, 7322LS, 1995; thence S89°41'18"W, along south line of Tract B, 538.62 feet distance to corner 1B, a 3 1/4 inch diameter aluminum cap, marked: COR. 1 TRACT B, STA-MT-0018, 5612S, 1986; thence N0°02'06"W, 25.00 feet to corner 1A/2B, a 3/4 inch diameter aluminum cap marked: COR. 1 TRACT A/COR. 2 TRACT B, STA-MT-0018, 5612S, 1986; thence N0°02'06"W, 100 feet distance to corner 2A, a 3/4 inch diameter aluminum cap marked: COR. 2 TRACT A, STA-MT-0018, 5612S, 1986; thence S89°41'18"W, 228.47 feet distance to corner 3A, heretofore described and True Point of Beginning, containing 11.989 acres.

LEGAL DESCRIPTION TRACT D (REMAINDER)

A tract of land lying in the Northwest 1/4 of the Southwest 1/4 of Section 11, Township 36 North, Range 27 West, Principal Meridian, Montana, in the county of Lincoln, in the State of Montana, and more particularly described as:

Commencing at corner 4 and the True Point of Beginning for Tract D, a 3/4 inch diameter aluminum rod, with a 3 1/4 inch diameter aluminum cap, marked: COR. 4 TRACT 1, 5612S, 1985; thence N24°27'28"E, 625.11 feet distance to corner 5, a 3/4 inch diameter aluminum rod with a 3 1/4 inch diameter aluminum cap, marked: COR. 5 TRACT 1, 5612S, 1985; thence N46°30'11"E, 43.98 feet distance to corner 6, a 3/4 inch diameter aluminum rod with a 3 1/4 inch diameter aluminum cap, marked: COR. 6 TRACT 1, 5612S, 1985; thence S75°50'36"E, 466.60 feet distance to corner 7, a 3/4 inch diameter aluminum rod with a 3 1/4 inch diameter aluminum cap, marked: COR. 7 TRACT 1, 5612S, 1986; thence S0°21'10"W, 1246.06 feet distance to corner 8/corner 3B, a 3/4 inch diameter aluminum rod with a 3 1/4 inch diameter aluminum cap, marked: COR. 8 TRACT 2/COR. 3 TRACT B, STA-MT-0018, 5612S, 1986; thence S0°22'45"W, 25.00 feet distance to corner 4B, a 3/4 inch diameter aluminum rod with 3 1/4 inch diameter aluminum cap, marked: COR. 4 TRACT B, STA-MT-0018, 5612S, 1986; thence along the south boundary of Tract B to corner 4 C, a 3/4 inch diameter aluminum rod with 3 1/4 inch diameter aluminum cap, marked: COR. 4 TRACT C, 7322LS, 1995; thence N0°00'00"E, 380.93 feet distance to corner 3C a 3/4 inch diameter aluminum rod with 3 1/4 inch diameter aluminum cap, marked: COR. 3 TRACT C, 7322LS, 1995; thence N85°00'00"W, 250.00 feet distance to corner 2C, a 3/4 inch diameter aluminum rod with 3 1/4 inch diameter aluminum cap, marked: COR. 2 TRACT C, 7322LS, 1995; thence N9°00'00"W, 390.00 feet distance to corner 1C, a 3/4 inch diameter aluminum rod with 3 1/4 inch diameter aluminum cap, marked: COR. 1 TRACT C, 7322LS, 1995; thence N90°00'00"W, 50 feet distance to corner 4, Tract 1; heretofore described and True Point of Beginning for Tract D, containing 17.090 acres.

CERTIFICATES

I hereby certify that the purpose of this division of land is to create an irregular tract from United States Forest Service land, located in Lincoln County, Montana and transfer to Lincoln County, State of Montana, as per instructions of Senate Bill No. 528, P.L. 103-398 (108 Stat. 4162) dated October 22, 1994, an act of the United States Congress. This Certificate of Survey is exempt from the State of Montana, Subdivision and Health Review Act, No. 76-4-1224.

Robert L. Schrenk
Robert L. Schrenk
Forest Supervisor
Kootenai National Forest

ZIMARD5
Date

State of: Montana)
County of: Lincoln) ss.

On the 21st day of March, 1995 A.D., before me, a Notary Public in and for the State of Montana, personally appeared Robert L. Schrenk, known to me to be the person whose name is subscribed to the within instrument and acknowledged to me that he executed the same.

In witness thereof, I have hereunto set my hand and affixed my official seal the day and year first above written.

John W. Hawn
Notary Public for the State of Montana
Residing in Libby, Montana.
(Seal)

My Commission expires Oct 20, 1998

CERTIFICATES

I hereby certify that the purpose of this division of land is to create an irregular tract from United States Forest Service land, located in Lincoln County, Montana and transfer to Lincoln County, State of Montana, as per instructions of Senate Bill No. 528, P.L. 103-398 (108 Stat. 4162) dated October 22, 1994, an act of the United States Congress. This Certificate of Survey is exempt from the State of Montana, Subdivision and Health Review Act, No. 76-4-1224.

Gerald R. Criner 3-23-95
Gerald R. Criner, Chairman Date
Lincoln County Commissioners

State of: Montana)
County of: Lincoln) ss.

On the 23rd day of March, 1995 A.D., before me, a Notary Public in and for the State of Montana, personally appeared Gerald R. Criner, known to me to be the person whose name is subscribed to the within instrument and acknowledged to me that he executed the same.

In witness thereof, I have hereunto set my hand and affixed my official seal the day and year first above written.

Jeannie Blinn
Notary Public for the State of Montana
Residing in Libby, Montana.
(Seal)

My Commission expires 4-25-96

CERTIFICATE OF SURVEY NO. 2302
SHEET 2 OF 2