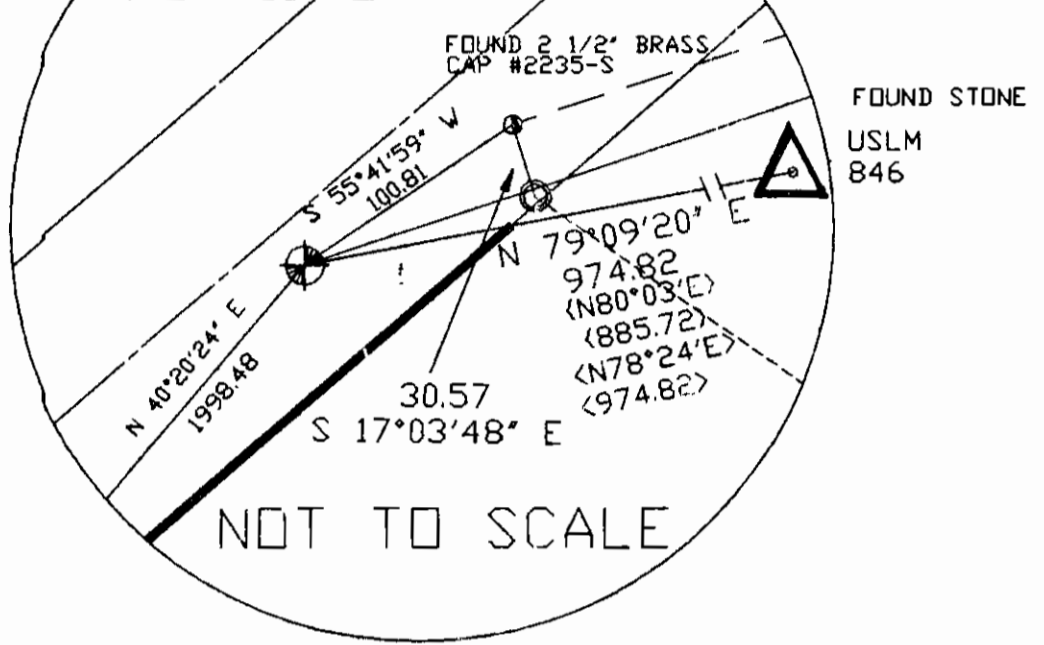
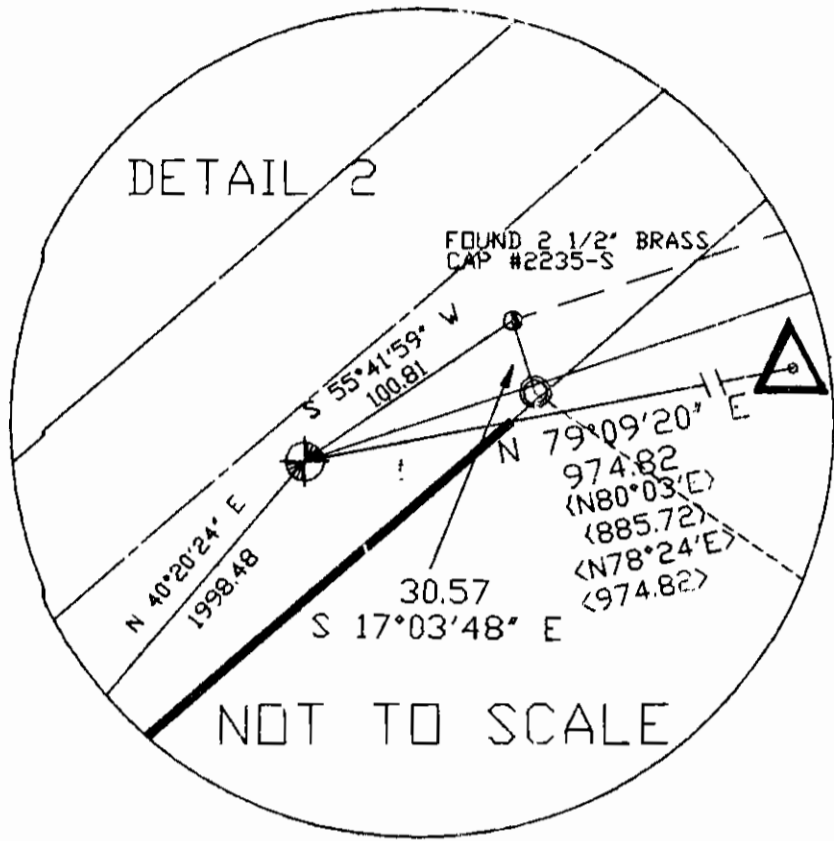
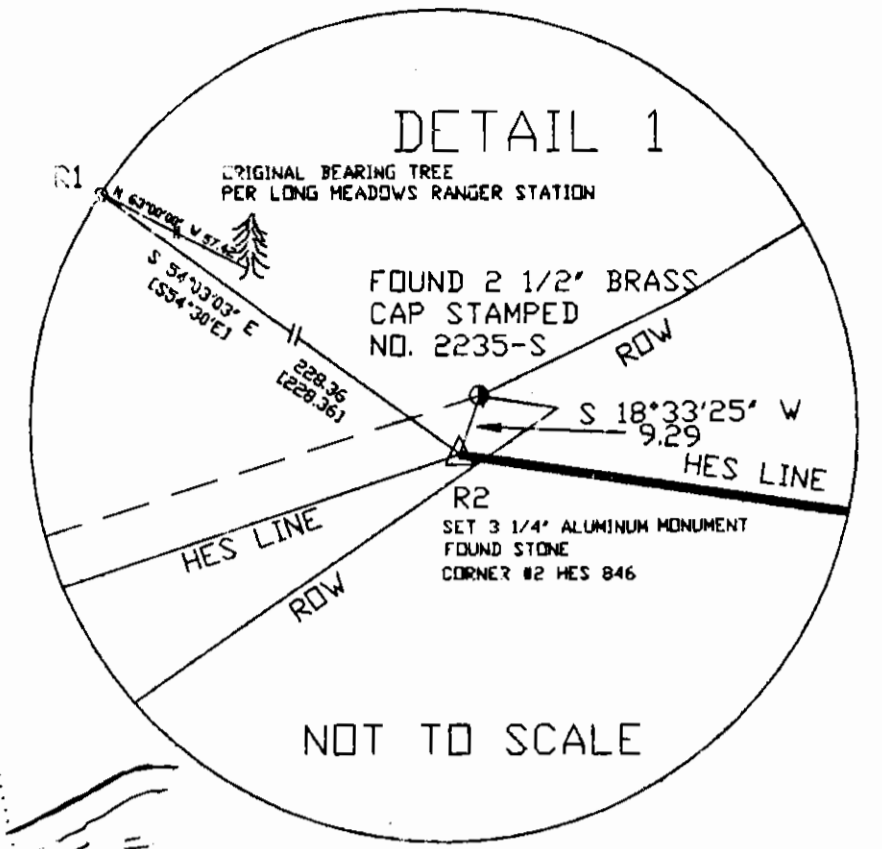


LINCOLN COUNTY, MONTANA RETRACEMENT OF HES 846

DATE: AUGUST 1993 FOR: CHAMPION REALTY INC. (FLORIDA)



FOUND STONE
USLM
846

SEE DETAIL 2

PER PLAT NO.
PF 2532

THE SOUTH LINE OF PLAT NO. PF 2532
STATES THAT OWNERSHIP IS ALL LANDS
LYING NORTH OF THE YAAK RIVER, THEREFORE
THE PORTION OF LAND LYING SOUTH OF THE YAAK
RIVER REMAINS WITHIN HES 846.

HES 846

139.09 ACRES IN HES 846
- 2.633 ACRES IN ROAD
- 17 ACRES PER PLAT NO 2532

119.457 ACRES NET

PURPOSE OF SURVEY

The purpose of this survey is to retrace and mark the boundaries of an existing record parcel, distinguishing between Champion Realty Corporation land and other Private land and to create parcels of land greater than 20 acres in size which must be surveyed pursuant to Section 76-3-401, M.C.A.

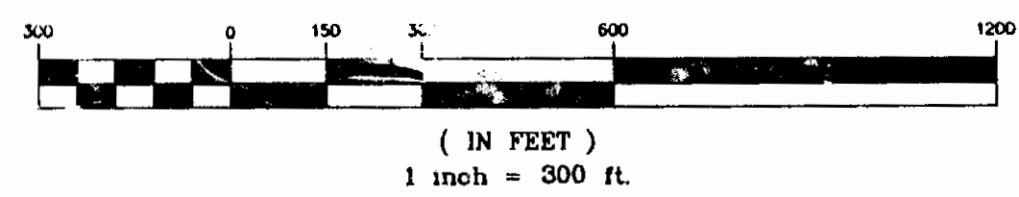
EXAMINED AND APPROVED FOR LINCOLN COUNTY BY: *Bill Bebel*

APPROVED: *Neil Williams* DATE: 1-13-94
Chairman, Lincoln County, Montana Commissioners

STATE OF MONTANA
COUNTY OF LINCOLN
Filed on this 13th day of Jan 1994 A.D. at
8:30 O'clock A. M.
Coral B. Cummings by *Jeanne Dennis*
County Clerk and recorder Deputy

- LEGEND**
- COMPUTED POINT
 - ⊕ SET 5/8" DIAMETER REBAR WITH A 1 1/4" DIAMETER PLASTIC CAP STAMPED 4975-S (WITNESS CORNER)
 - FOUND BRASS CAP PER PLAT NO. 2532
 - FOUND 1/2" PIPE
 - COMPUTED POSITION OF PROPERTY CORNERS OF PF PLAT NO. 2532
 - FOUND FEDERAL HIGHWAYS MONUMENT 2" ALUMINUM MONUMENT STAMPED PC OR PT
 - △ SET 3 1/4" ALUMINUM MONUMENT (F.S.) STAMPED AS NOTED (HES 846)
 - <> RECORD PER PF 2532
 - <> RECORD PER HES 846
 - <> PER LONG MEADOWS RANGER DISTRICT SURVEY
 - <> RECORD PER HES 1137
 - ⊠ FOUND HES STONE MARKED 'X'
 - << UNRECORDED PER U.S.S. SURVEY

GRAPHIC SCALE



CERTIFICATE OF SURV. NO. 2158