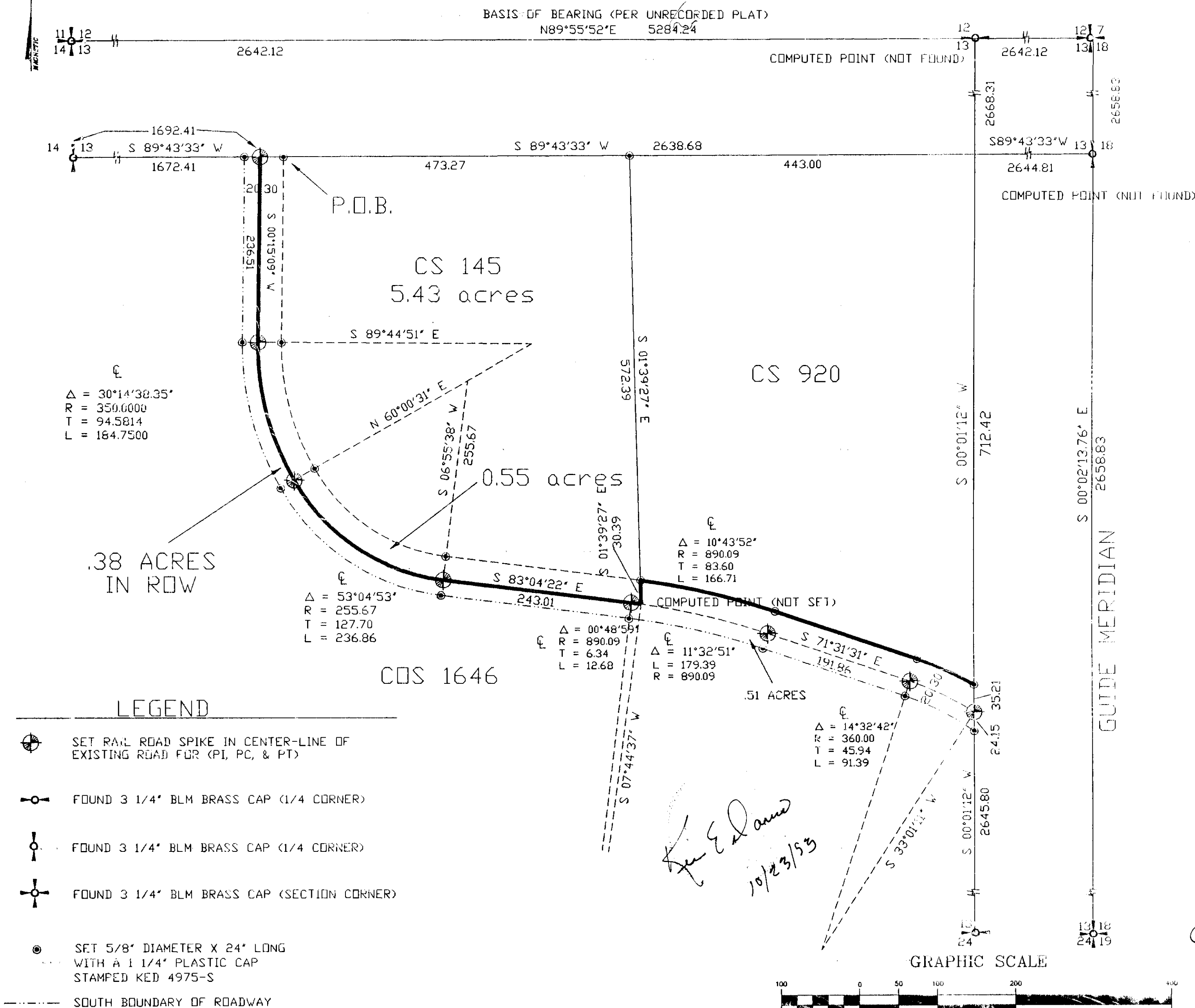


# CERTIFICATE OF SURVEY

RETRACEMENT OF GARRISON LOOP ROAD  
FOR LINCOLN COUNTY AND DENNIS WELCH  
TWP 31N., R34W., SECTION 13., P.M.M.



## LINCOLN COUNTY ROAD/GARRISON

A roadway lying within the SW 1/4 of Section 13, Twp. 31 N, R. 34 W, P.M.M., being 20.00 feet on the west and south side and being 30.00 feet on the north and east side of the following described line, being the approximate centerline of **Garrison Loop Road**.

Beginning at a point from which a 3 1/4 inch dia. brass cap bears S 89°43'33" W 1692.41 feet marking the west 1/4 corner of Section 13, Twp. 31 N, R. 34 W, P.M.M.; **thence**, from said point of beginning along the described line, the following (7) seven courses S 00°15'09" W 236.51 feet; **thence**, on the arc of a curve to the left, having a radius of 350.00 feet, turning through a delta angle of 30°14'38", having a length of 184.75 feet; **thence**, on the arc of a curve to the left, having a radius of 255.67 feet, turning through a delta angle of 53°04'53", having a length of 236.86 feet; **thence**, S 83°04'22" E, 243.01 feet; **thence**, on the arc of a curve to the right, having a radius of 890.09 feet, turning through a delta angle of 11°32'51", having a length of 179.39 feet; **thence**, S 71°31'31" E 191.86 feet; **thence**, on the arc of a curve to the right, having a radius of 360.00 feet, turning through a delta angle of 14°32'42", having a length of 91.39, to a point on the north-south centerline of said Section 13.

The sidelines of the 50 foot wide roadway to be extended or shortened to meet and terminate at the said sectional lines. All P.C.'s, P.T.'s and points of intersections were monumented by 5/8 inch dia. x 24 inch long rebar with 1 1/4 inch plastic cap stamped: KED 4975 S. Roadway area equals 1.44 acres, more or less.

EXAMINED AND APPROVED FOR LINCOLN COUNTY BY: *Bio/Bio*

DATE: 10-20-93

APPROVED: *Chairman*  
Chairman, Lincoln County, Montana Commissioners

STATE OF MONTANA  
COUNTY OF LINCOLN

Filed on this 21<sup>st</sup> day of Oct., 1993 A.D. at 12:00 O'clock P.M.  
*Coral R. Cummings* by *Jeanne Dennis*  
County Clerk and recorder Deputy