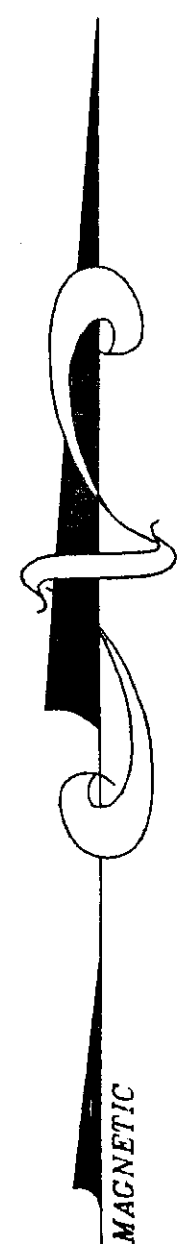


LINCOLN COUNTY, MONTANA  
**CERTIFICATE OF SURVEY**

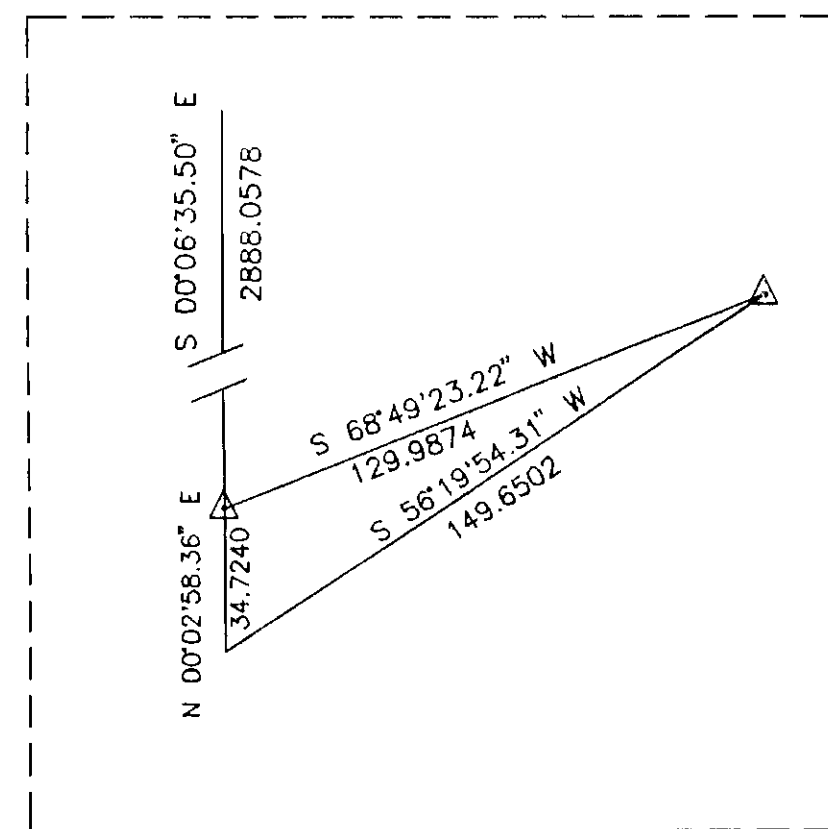
IN THE UNSURVEYED TPS. 35 AND 36N., R. 32W.

HOMESTEAD ENTRY SURVEY #432 JULY, 1993

**RETRACEMENT**



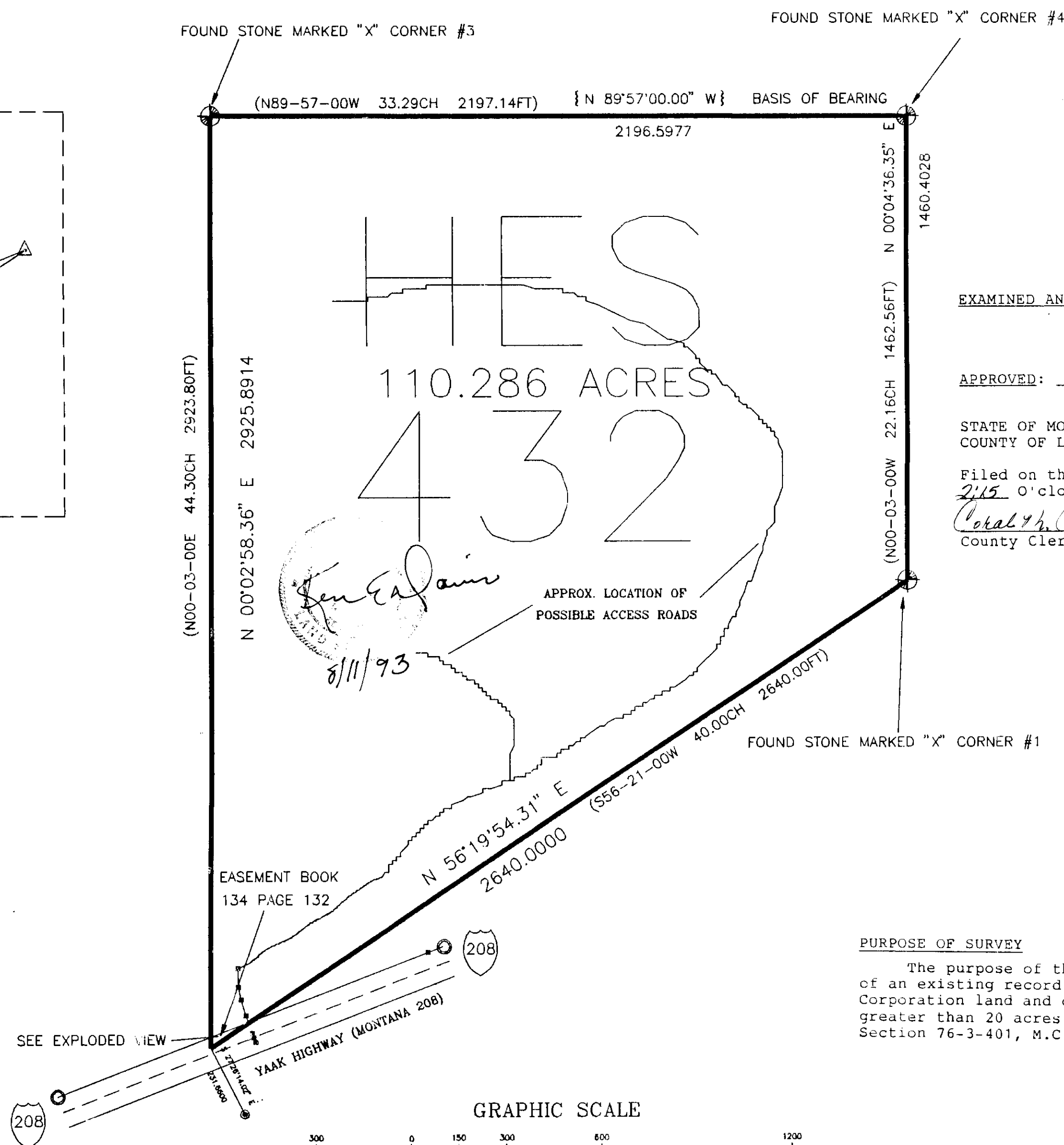
EXPLODED VIEW OF ROAD CROSSING



.050 ACRES

**LEGEND**

- ⊕ FOUND STONES AS NOTED
- FOUND 5/8" REBAR CAPPED DOYLE 2516-S
- FOUND 3" ALUMINUM R.O.W MONUMENT
- ( ) PER RECORD HES 432
- || BASIS OF BEARING PER HES 432
- ▲ SET 5/8" REBAR CAPPED K.E.D. 4975S



EXAMINED AND APPROVED FOR LINCOLN COUNTY BY: Bird Buelhoff

DATE: 8-18-93

APPROVED: Shirley  
Chairman, Lincoln County, Montana Commissioners

STATE OF MONTANA  
COUNTY OF LINCOLN

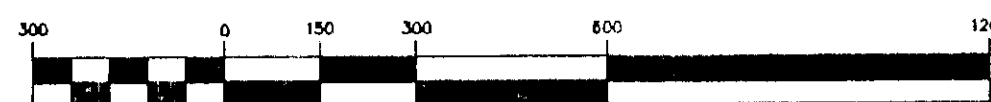
Filed on this 19<sup>th</sup> day of August, 1993 A.D. at  
2:15 O'clock P. M.

Coralyn Cummings by Jeannie Dennis  
County Clerk and recorder Deputy

**PURPOSE OF SURVEY**

The purpose of this survey is to retrace and mark the boundaries of an existing record parcel, distinguishing between Champion Realty Corporation land and other Private land and to create parcels of land greater than 20 acres in size which must be surveyed pursuant to Section 76-3-401, M.C.A.

**GRAPHIC SCALE**



( IN FEET )  
1 inch = 300 ft.