

CERTIFICATE OF SURVEY
DEPENDENT RESURVEY OF MINERAL SURVEY
No. 7654, 7655 & 7656 IN SECTION 10
T.30N., R.34W., P.M.MT.
KOOTENAI NATIONAL FOREST
LINCOLN COUNTY, MONTANA
DECEMBER 1992

FOREST SUPERVISOR'S CERTIFICATE

This survey was made at my request for National Forest Management purposes.

Robert L. Schrenk
 Robert L. Schrenk, Forest Supervisor

PURPOSE OF SURVEY

The purpose of this survey is to locate upon the ground the title lines of record between private lands and National Forest Systems Lands. No division of land is hereby created. Project name: SILVER GROUSE MINERAL SURVEY, date of survey: June 1992

HISTORY OF SURVEY

September 1905 Original Survey by E.P.Harrison, M.S. 7654 Cabinet Queen Lode, M.S. 7655 Little Butte Lode, M.S. 7656 Little Spokane Lode.

METHOD OF SURVEY

G.P.S. Geodetic receivers were used for the control survey and a one second Total Station with Electronic Data Collector was used with conventional closed traverse procedures to tie original controlling corners. The location of the monuments set this survey meets the positional tolerance standard referenced in the USDA, Forest Service, Region One, Cadastral Contract Specifications manual, dated March 1987

LEGEND

- Found Original Evidence, corner monument set this survey, 3/4" x 30" aluminum rod with a 3 1/4" diam. aluminum cap.
- Corner monument set by survey, 3/4" x 30" aluminum rod with a 3 1/4" diam. aluminum cap.
- () Original 1905 Mineral Survey Record
- Lode Lines
- Property boundary posted by this survey, meets the USDA Forest Service R-1, Cadastral Contract Specifications manual, dated March 1987.

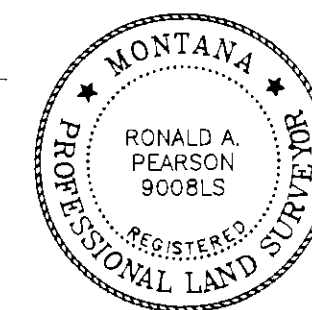
BASIS OF BEARING

Computed from record State Plane coordinates (NAD 83) values for station "Freeman and Freeman AZ" (N.G.S. established 1986, 1st order Station) Then rotated to true Meridian (-4°41'13") about corner No. 3 of Cabinet Queen Lode common with corner No. 2 of Little Spokane Lode.

SURVEYOR'S CERTIFICATE:

I hereby certify that I am a registered land surveyor in the State of Montana, that the survey shown on this Certificate of Survey has been prepared in accordance with Montana Code Annotated Sections 76-3-101 through 76-3-614 and the Lincoln County regulations adopted pursuant thereto.

Ronald A. Pearson
 Ronald A. Pearson Montana Registration No. 9008 LS



CERTIFICATE OF EXAMINING OFFICIAL:

Approved this 7th day of January 1993 A.D.

Dis. B. B. B.
 Examining Official

Approved *Open*
 Chairman, Lincoln County Commissioners

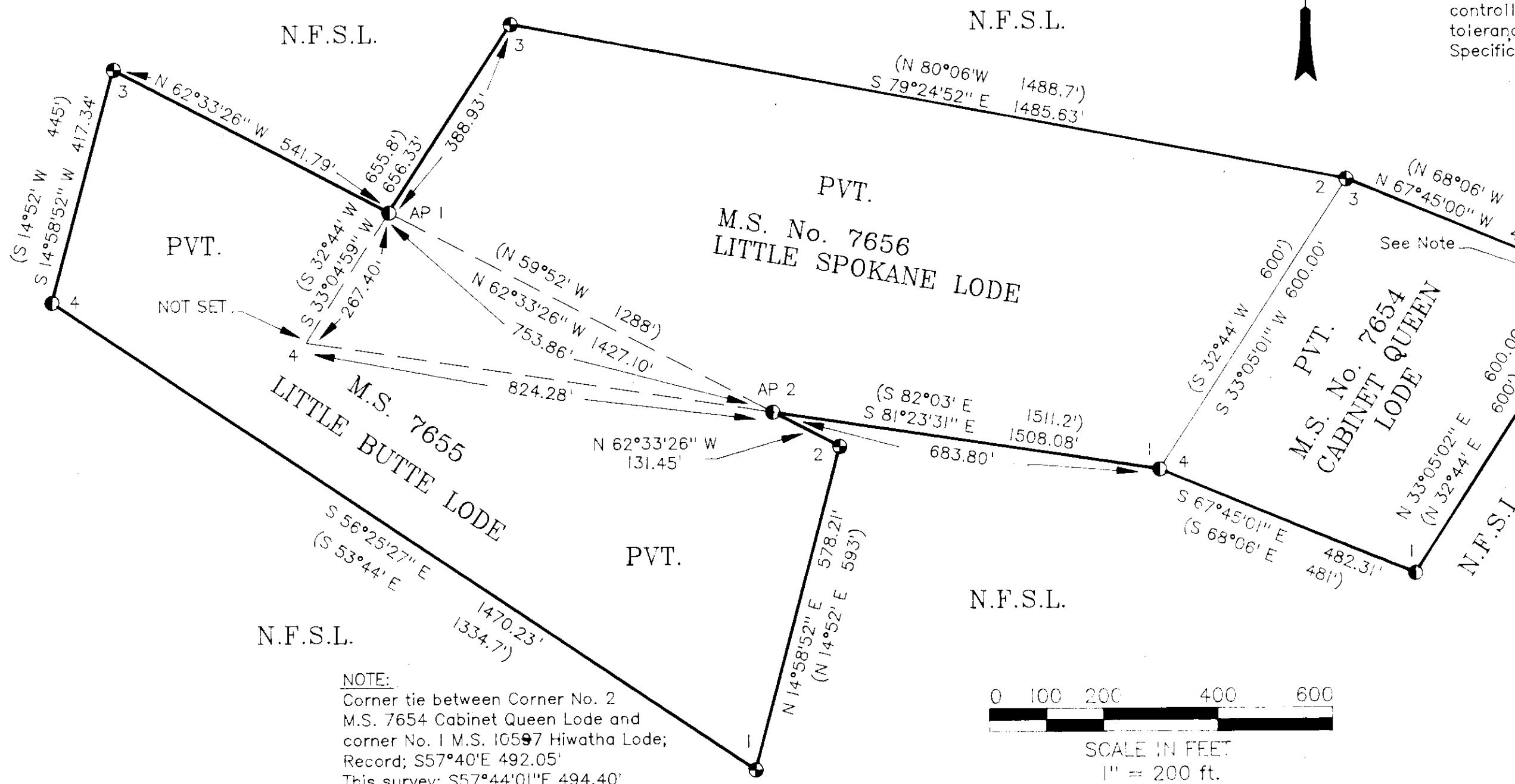
CERTIFICATE OF CLERK AND RECORDER:

State of Montana, County of Lincoln, filed this 7th day

of January 1993, A.D. at 10:30 o'clock

Coral B. Pearson by *Jennie Dennis*
 County Clerk Recorder Deputy

CERTIFICATE OF SURVEY NO. 2019



NOTE:
 Corner tie between Corner No. 2 M.S. 7654 Cabinet Queen Lode and corner No. 1 M.S. 10597 Hiwatha Lode; Record; S57°40'E 492.05' This survey; S57°44'01"E 494.40'

SURVEYOR'S NOTES

A Control Survey was conducted and all found controlling corners were tied. All corners were searched using a variety of adjustments and original physical feature ties. Thus the method selected to re-establish the lost corner position were compared. The positions of the lost corners were re-established by the method, that gave the best results, compared to the original record and the original intent of the Mineral Survey.

Mineral Survey 7654 Cabinet Queen Lode March 1900

Corner No. 1 Re-established by record bearing and distance from corner No. 2 of Cabinet Queen Lode.
Corner No. 4 and corner No. 1 of Little Spokane Lode, re-established by record bearing and distance from corner No.3 of Cabinet Queen Lode common with corner No. 2 of Little Spokane Lode.

Mineral Survey 7655 Little Butte Lode June 1900

Corner No. 4 Position Re-established by parallel bearing to opposite ends of lode; corner No. 1 to corner No. 2; and record bearing of line from corner No. 1 to corner No. 4. The latter record bearing was computed by comparing record bearing and measured bearing for line from found corner No. 2 to found corner No. 3.

Mineral Survey 7656 Little Spokane Lode September 1900

Corner No. 4 Position Re-established by parallel bearing to opposite ends of the lode; corner No. 1 to corner No. 2, and single proportion distance from corner No. 1 to corner No. 4. Single proportion distance calculated from measured and record distance between corner No. 2 and corner No. 3, and compared to record distance between corner No. 1 and corner No. 4.

Refer to Certified Corner Recordations for each corner set or maintained, filled with the Clerk and Recorder, Lincoln County Courthouse, Libby Montana. While this survey was accomplished utilizing the Montana State Plane Coordinate system based on NAD 83 Datum, values shown on this certificate have been scaled to the 3,400 foot elevation by a combined sea level and scale factor of 0.99967794. Montana State Plane coordinate System (NAD 83) computed value for corner No. 3 of Cabinet Queen Lode common to Corner No. 2 of Little Spokane Lode. Y=478,210. M, X=124,365. M; Lat.=48°22'40"N, Long.=115°55'48"W.