

CERTIFICATE OF SURVEY

DEPENDENT RESURVEY AND PARTIAL SUBDIVISION
 OF SECTION 27,
 TOWNSHIP 31 NORTH, RANGE 29 WEST, P.M., MT.
 LINCOLN COUNTY, MONTANA
 JANUARY 1992

PURPOSE OF SURVEY

THE PURPOSE OF THIS SURVEY IS TO LOCATE UPON THE GROUND THE TITLE LINES OF RECORD BETWEEN CHAMPION INTERNATIONAL CORPORATION LANDS AND NATIONAL FOREST SYSTEM LANDS, AND NO DIVISION OF LANDS IS HEREBY CREATED.

LEGAL DESCRIPTION

CHAMPION INTERNATIONAL LANDS DEFINED HEREON: S1/2 SE1/4 S27, T31N, R29W, PM, MT.
 NATIONAL FOREST SYSTEM LANDS DEFINED HEREON: NE1/4, N1/2 SE1/4, SW1/4, NW1/4 S27, T31N, R29W, PM, MT.

HISTORY

1898-ORIGINAL GLO SURVEY BY PAUL BICKEL
 1903-SUBSEQUENT GLO SURVEY BY GEORGE FESSENDEN
 1972-REMONUMENTATION BY BLM
 1972-CADASTRAL SURVEY BY CORP OF ENGINEERS FOR LIBBY DAM

SURVEY METHOD

THIS SURVEY WAS ACCOMPLISHED USING A TOTAL STATION TRAVERSE DECEMBER 1991-JANUARY 1992.

BASIS OF BEARING

BEARINGS BASED ON THE GLO BEARING OF THE E1/2 OF THE SOUTH LINE OF S27.

NOTES

1. THE LINES MARKED ARE TO NATIONAL FOREST STANDARDS WITH 6 FOOT STEEL POSTS, DECALS, AND BLAZED TREES.
2. FIELD NOTES AND COMPUTATIONS ARE FILED IN THE FOREST SERVICE OFFICE, KOOTENAI NATIONAL FOREST. CORNER RECORDATION FORMS ARE FILED IN THE COUNTY RECORDER'S OFFICE OF THE APPROPRIATE COUNTY.
3. THE PRECISION OF THE MEASURING SYSTEM USED PROVIDES THAT THE LOCATION OF ALL MONUMENTS SET OR FOUND MEET FOREST SERVICE POSITIONAL TOLERANCE STANDARDS AS SPECIFIED.
4. THIS PROJECT WAS CONDUCTED AS A COOPERATIVE CONTRACT BETWEEN CHAMPION INTERNATIONAL CORPORATION AND THE KOOTENAI NATIONAL FOREST.

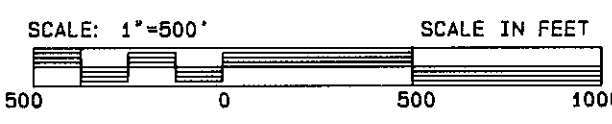
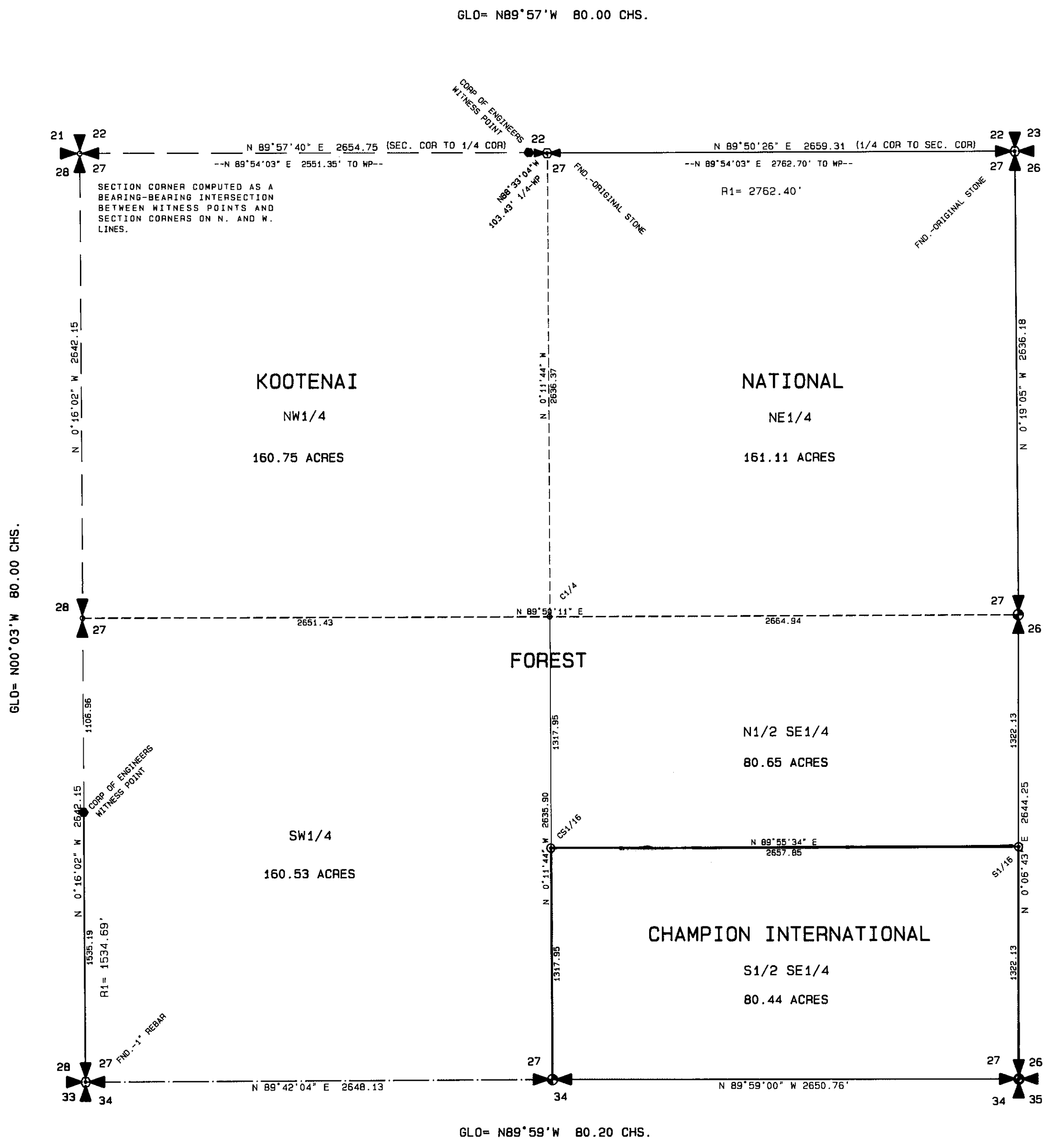
LEGEND

- Found-BLM Brass Cap-1972.
- Found-Corp of Engineers Brass Cap/conc. mon.
- ⊙ Set-Corner Monument this survey.
Standard Forest Service aluminum monument marked 9958S.
- ⊙ Set-Corner Monument this survey.
Aluminum cap (3 1/4" dia.)/aluminum shaft (3/4"x30") marked 9958S.
- Computed point-not set.
- National Forest Boundary-marked and posted this survey.

GLO=original GLO record.

R1=Record per Corp of Engineers Survey.

CH=1 Chain (66 feet).



APPROVALS

Frederick William
 Chairman, Lincoln County Commissioners

1-31-92
 Date

Bill Bruchhoff
 Checked by

1-31-92
 Date

CERTIFICATE OF RECORDER

Filed for record this 31st day of January, 1992, at 2:20 o'clock P.M.

Carol M. Cummings
 Lincoln County Recorder

Debra J. B. G. G.
 Deputy

DATE: 1/31/92

JOB NO. M91-21

DWN. BY: SAM

REVISION 2

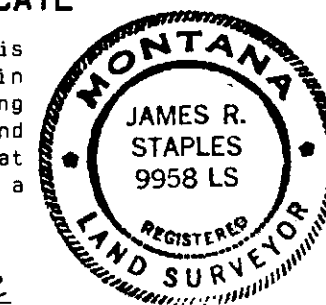
SHEET 1 OF 1

SECTION 27
 TOWNSHIP 31 NORTH
 RANGE 29 WEST
 PRINCIPAL MERIDIAN MT
 LINCOLN COUNTY

SURVEYOR'S CERTIFICATE

I, James R. Staples, do hereby certify that this Certificate of Survey has been prepared in conformance to the Montana Subdivision & Platting Act (Sections 76-3-101 through 76-3-614 M.C.A.) and the regulations adopted pursuant thereto, and that the map shown hereon is a true representation of a survey made by me.

James R. Staples
 James R. Staples, 9958LS
 Date 1-31-92



J.R.S. & Associates

P.O. BOX 1050
 603 CALIFORNIA AVE. - HWY. 37
 LIBBY, MONTANA 59923
 (406) 293-5059

1912