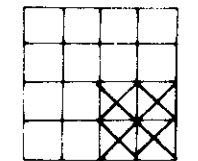
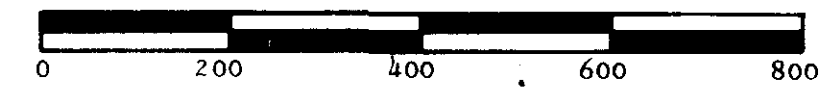


CERTIFICATE OF SURVEY
LOCATED IN THE SOUTHEAST QUARTER OF SECTION 25, T34N, R26W, PM, M, LINCOLN COUNTY, MONTANA
COURT ORDER NO. DV-91-084

SHEET 1 OF 2 SHEETS



- FOUND 5/8" RE-BAR WITH PLASTIC SURV-CAP MARKED "HAIGES 2520S"
- FOUND 5/8" RE-BAR WITH PLASTIC SURV-CAP MARKED "BURTON 5428S"
- FOUND 5/8" RE-BAR WITH PLASTIC SURV-CAP MARKED "7328S"
- ⊙ FOUND 2" DIA. BRASS CAP MONUMENT FOR C₄ CORNER
- ⊕ FOUND 2" DIA. BRASS CAP MONUMENT FOR CENTER SOUTH ONE-SIXTEENTH CORNER
- ⊗ SET 5/8" X 24" RE-BAR WITH PLASTIC SURV-CAP MARKED "BURTON 5428S"

PURPOSE OF SURVEY:

- PARCEL A - RETRACEMENT
- TRACT 1 - RETRACEMENT
- TRACT 2 - RETRACEMENT
- TRACT 3 - RETRACEMENT
- TRACT 4 - COURT ORDER BOUNDARY ADJUSTMENT
- TRACT 5 - RETRACEMENT
- TRACT 6 - COURT ORDER BOUNDARY ADJUSTMENT
- PARCEL B - COURT ORDER BOUNDARY ADJUSTMENT ADDED TO TRACT 6

PREPARED BY
FLATHEAD LAND CONSULTANTS
JAMES H. BURTON, R.L.S.
P.O. BOX 572
118 SOUTH MERIDIAN ROAD
KALISPELL, MONTANA 59901
257-2202

PREPARED FOR
BOCK/PIERRY

AUGUST 1991

APPROVED:
James H. Burton
JAMES H. BURTON
REGISTERED LAND SURVEYOR
REGISTRATION NO. 5428S

APPROVED:

L.A. Holm 9/27 19 91
COUNTY COMMISSIONER
Bill Buschhoff 9-27, 19 91
CHECKED BY

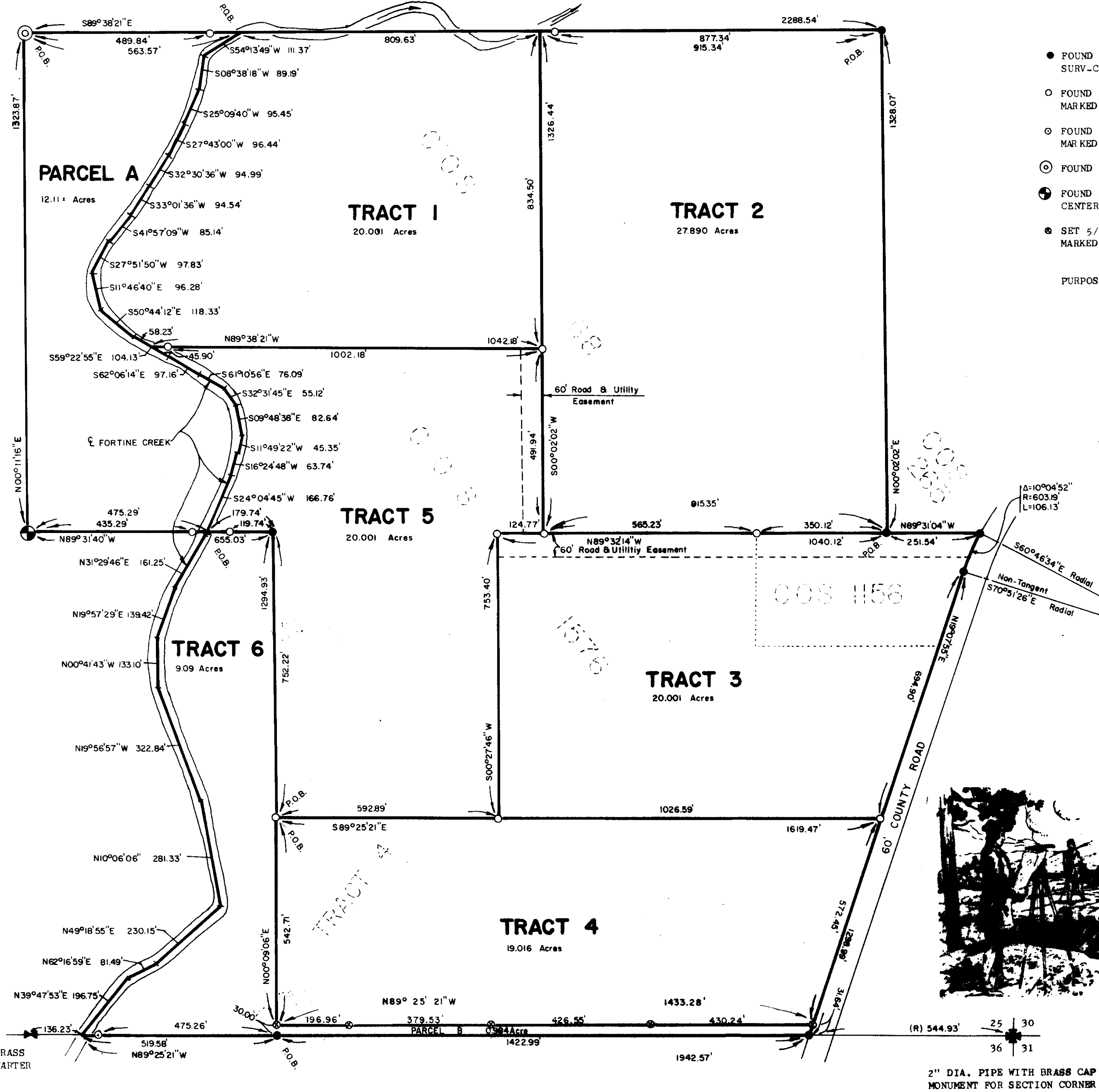
STATE OF MONTANA)
COUNTY OF Lincoln) SS.

FILED ON THE 27th DAY OF Sept
19 91, AT 3:05 O'CLOCK P.M.

Coral M. Cummings
COUNTY CLERK AND RECORDER

BY *Sherry L. Hawks*
DEPUTY

INSTRUMENT REC. NO. _____
CERTIFICATE OF SURVEY NO. 1865



CERTIFICATE OF SURVEY

LOCATED IN THE SOUTHEAST QUARTER OF SECTION 25, T34N, R26W, PM,M, LINCOLN COUNTY, MONTANA

COURT ORDER NO. DV-91-084

SHEET 2 OF 2 SHEETS

DESCRIPTION - PARCEL A

A TRACT OF LAND LOCATED IN THE NORTHWEST QUARTER OF THE SOUTHEAST QUARTER OF SECTION 25, TOWNSHIP 34 NORTH, RANGE 26 WEST, PRINCIPAL MERIDIAN, MONTANA, LINCOLN COUNTY, MONTANA AND MORE PARTICULARLY DESCRIBED AS FOLLOWS:

COMMENCING AT THE CENTER QUARTER CORNER OF SAID SECTION 25, INDICATED BY A FOUND 2" DIAMETER PIPE WITH BRASS CAP AND WHICH POINT IS THE TRUE POINT OF BEGINNING;

THENCE S89°38'21"E, ON AND ALONG THE NORTH BOUNDARY OF SAID SOUTHEAST QUARTER, A DISTANCE OF 563.57 FEET TO A POINT OF INTERSECTION WITH THE CENTERLINE OF FORTINE CREEK;

THENCE SOUTHWESTERLY AND SOUTHEASTERLY ON AND ALONG SAID CENTERLINE OF FORTINE CREEK, THE FOLLOWING EIGHTEEN COURSES:

S54°13'49"W, A DISTANCE OF 111.37 FEET TO A POINT; S08°38'18"W, A DISTANCE OF 89.19 FEET TO A POINT; S25°09'40"W, A DISTANCE OF 95.45 FEET TO A POINT; S27°43'00"W, A DISTANCE OF 96.44 FEET TO A POINT; S32°30'36"W, A DISTANCE OF 94.99 FEET TO A POINT; S33°01'36"W, A DISTANCE OF 94.54 FEET TO A POINT; S41°57'09"W, A DISTANCE OF 85.14 FEET TO A POINT; S27°51'50"W, A DISTANCE OF 97.83 FEET TO A POINT; S11°46'40"E, A DISTANCE OF 96.28 FEET TO A POINT; S50°44'12"E, A DISTANCE OF 118.33 FEET TO A POINT; S59°22'55"E, A DISTANCE OF 104.13 FEET TO A POINT; S62°06'14"E, A DISTANCE OF 97.16 FEET TO A POINT; S61°10'56"E, A DISTANCE OF 76.09 FEET TO A POINT; S32°31'45"E, A DISTANCE OF 55.12 FEET TO A POINT; S09°48'38"E, A DISTANCE OF 82.64 FEET TO A POINT; S11°49'22"W, A DISTANCE OF 45.35 FEET TO A POINT; S16°24'48"W, A DISTANCE OF 63.74 FEET TO A POINT; S24°04'45"W, A DISTANCE OF 166.76 FEET TO A POINT WHICH POINT LIES ON THE SOUTH BOUNDARY OF SAID NORTHWEST QUARTER OF THE SOUTHEAST QUARTER;

THENCE N89°31'40"W, ON AND ALONG SAID SOUTH BOUNDARY OF THE NORTHWEST QUARTER OF THE SOUTHEAST QUARTER A DISTANCE OF 475.29 FEET TO A FOUND 2" DIAMETER BRASS CAP MONUMENT WHICH POINT INDICATES THE CENTER SOUTH ONE-SIXTEENTH CORNER OF SAID SECTION 25;

THENCE N00°11'16"E, ON AND ALONG THE WEST BOUNDARY OF SAID NORTHWEST QUARTER OF THE SOUTHEAST QUARTER A DISTANCE OF 1323.87 FEET TO THE TRUE POINT OF BEGINNING.

THIS TRACT CONTAINS 12.11 ACRES OF LAND MORE OR LESS AND SUBJECT TO ANY EASEMENTS OF RECORD.

DESCRIPTION - TRACT 1

A TRACT OF LAND LOCATED IN THE NORTH HALF OF THE SOUTHEAST QUARTER OF SECTION 25, TOWNSHIP 34 NORTH, RANGE 26 WEST, PRINCIPAL MERIDIAN, MONTANA, LINCOLN COUNTY, MONTANA AND MORE PARTICULARLY DESCRIBED AS FOLLOWS:

COMMENCING AT THE CENTER ONE-SIXTEENTH CORNER OF SAID SECTION 25, INDICATED BY A FOUND 2" DIAMETER BRASS CAP MONUMENT; THENCE S89°38'21"E, ON AND ALONG THE NORTH BOUNDARY OF SAID SOUTHEAST QUARTER A DISTANCE OF 563.57 FEET TO A POINT OF INTERSECTION WITH THE CENTERLINE OF FORTINE CREEK AND WHICH POINT IS THE TRUE POINT OF BEGINNING;

THENCE S89°38'21"E, CONTINUING ON AND ALONG SAID NORTH BOUNDARY OF THE SOUTHEAST QUARTER, A DISTANCE OF 809.63 FEET TO A POINT;

THENCE S00°02'02"W, A DISTANCE OF 834.50 FEET TO A POINT;

THENCE N89°38'21"W, A DISTANCE OF 1042.18 FEET TO A POINT OF INTERSECTION WITH SAID CENTERLINE OF FORTINE CREEK;

THENCE NORTHWESTERLY AND NORTHEASTERLY, ON AND ALONG SAID CENTERLINE OF FORTINE CREEK, THE FOLLOWING ELEVEN COURSES:

N59°22'55"W, A DISTANCE OF 58.23 FEET TO A POINT; N50°44'12"W, A DISTANCE OF 118.33 FEET TO A POINT; N11°46'40"W, A DISTANCE OF 96.28 FEET TO A POINT; N27°51'50"E, A DISTANCE OF 97.83 FEET TO A POINT; N41°57'09"E, A DISTANCE OF 85.14 FEET TO A POINT; N33°01'36"E, A DISTANCE OF 94.54 FEET TO A POINT; N32°30'36"E, A DISTANCE OF 94.99 FEET TO A POINT; N27°43'00"E, A DISTANCE OF 96.44 FEET TO A POINT; N25°09'40"E, A DISTANCE OF 95.45 FEET TO A POINT; N08°38'18"E, A DISTANCE OF 89.19 FEET TO A POINT; N54°13'49"E, A DISTANCE OF 111.37 FEET TO THE TRUE POINT OF BEGINNING.

THIS TRACT CONTAINS 20.001 ACRES OF LAND AND TOGETHER WITH A 60-FOOT ROAD AND UTILITY EASEMENT AS SHOWN HEREON AND SUBJECT TO ANY EASEMENTS OF RECORD.

DESCRIPTION - TRACT 2

A TRACT OF LAND LOCATED IN THE NORTH HALF OF THE SOUTHEAST QUARTER OF SECTION 25, TOWNSHIP 34 NORTH, RANGE 26 WEST, PRINCIPAL MERIDIAN, MONTANA, LINCOLN COUNTY, MONTANA AND MORE PARTICULARLY DESCRIBED AS FOLLOWS:

COMMENCING AT THE NORTHEAST CORNER OF THAT TRACT OF LAND INDICATED ON CERTIFICATE OF SURVEY NUMBER 68, RECORDS OF LINCOLN COUNTY, MONTANA, AND WHICH POINT LIES ON THE NORTH BOUNDARY OF SAID SOUTHEAST QUARTER AND WHICH POINT IS THE TRUE POINT OF BEGINNING;

THENCE S00°02'02"W, ON AND ALONG THE EAST BOUNDARY OF SAID TRACT INDICATED ON CERTIFICATE OF SURVEY NUMBER 68, A DISTANCE OF 1328.07 FEET TO A POINT;

THENCE N89°32'14"W, A DISTANCE OF 915.35 FEET TO A POINT;

THENCE N00°02'02"E, A DISTANCE OF 1326.44 FEET TO A POINT WHICH POINT LIES ON SAID NORTH BOUNDARY OF THE SOUTHEAST QUARTER;

THENCE S89°38'21"E, ON AND ALONG SAID NORTH BOUNDARY OF THE SOUTHEAST QUARTER, A DISTANCE OF 915.34 FEET TO THE TRUE POINT OF BEGINNING.

THIS TRACT CONTAINS 27.890 ACRES OF LAND AND TOGETHER WITH A 60-FOOT ROAD AND UTILITY EASEMENT AS SHOWN HEREON AND SUBJECT TO ANY EASEMENTS OF RECORD.

DESCRIPTION - TRACT 3

A TRACT OF LAND LOCATED IN THE SOUTH HALF OF THE SOUTHEAST QUARTER OF SECTION 25, TOWNSHIP 34 NORTH, RANGE 26 WEST, PRINCIPAL MERIDIAN, MONTANA, LINCOLN COUNTY, MONTANA AND MORE PARTICULARLY DESCRIBED AS FOLLOWS:

COMMENCING AT THE NORTHEAST CORNER OF THAT TRACT OF LAND INDICATED ON CERTIFICATE OF SURVEY NUMBER 68, RECORDS OF LINCOLN COUNTY, MONTANA AND INDICATED BY A FOUND 5/8" RE-BAR; THENCE S00°02'02"W, ON AND ALONG THE EAST BOUNDARY OF SAID TRACT INDICATED ON CERTIFICATE OF SURVEY NUMBER 68, A DISTANCE OF 1328.07 FEET TO A POINT AND WHICH POINT IS THE TRUE POINT OF BEGINNING;

THENCE N89°32'14"W, A DISTANCE OF 1040.12 FEET TO A POINT;

THENCE S00°27'46"W, A DISTANCE OF 753.40 FEET TO A POINT;

THENCE S89°25'21"E, A DISTANCE OF 1026.59 FEET TO A POINT WHICH POINT LIES ON THE WESTERLY RIGHT-OF-WAY BOUNDARY OF A 60-FOOT COUNTY ROAD;

THENCE N19°07'55"E, ON AND ALONG SAID WESTERLY BOUNDARY OF THE 60-FOOT COUNTY ROAD, A DISTANCE OF 694.90 FEET TO A POINT OF CURVATURE;

THENCE NORTHEASTERLY ON AND ALONG SAID RIGHT-OF-WAY BOUNDARY OF THE 60-FOOT COUNTY ROAD, ON A CURVE TO THE RIGHT (DELTA = 10°04'52", RADIUS = 603.19 FEET AND RADIAL BEARING = 570°51'26"E) A DISTANCE OF 106.13 FEET TO A POINT;

THENCE N89°31'04"W, A DISTANCE OF 251.54 FEET TO THE TRUE POINT OF BEGINNING.

THIS TRACT CONTAINS 20.001 ACRES OF LAND AND SUBJECT TO AND TOGETHER WITH A 60-FOOT ROAD AND UTILITY EASEMENT AS SHOWN HEREON AND SUBJECT TO ANY EASEMENTS OF RECORD.

DESCRIPTION - TRACT 4

A TRACT OF LAND LOCATED IN THE SOUTH HALF OF THE SOUTHEAST QUARTER OF SECTION 25, TOWNSHIP 34 NORTH, RANGE 26 WEST, PRINCIPAL MERIDIAN, MONTANA, LINCOLN COUNTY, MONTANA AND MORE PARTICULARLY DESCRIBED AS FOLLOWS:

COMMENCING AT THE NORTHEAST CORNER OF TRACT 4 OF CERTIFICATE OF SURVEY NUMBER 1576, RECORDS OF LINCOLN COUNTY AND WHICH POINT IS THE TRUE POINT OF BEGINNING;

THENCE S89°25'21"E, ON AND ALONG THE NORTH BOUNDARY OF SAID TRACT 4, A DISTANCE OF 1619.47 FEET TO A POINT WHICH POINT LIES ON THE WESTERLY RIGHT-OF-WAY BOUNDARY OF A 60-FOOT COUNTY ROAD;

THENCE S19°07'55"W, ON AND ALONG SAID WESTERLY RIGHT-OF-WAY BOUNDARY, A DISTANCE OF 572.45 FEET TO A POINT;

THENCE N89°25'21"W, AND LEAVING SAID RIGHT-OF-WAY BOUNDARY, A DISTANCE OF 1433.28 FEET TO A POINT WHICH POINT LIES ON THE WEST BOUNDARY OF SAID TRACT 4;

THENCE N00°09'06"E, ON AND ALONG SAID WEST BOUNDARY OF TRACT 4, A DISTANCE OF 542.71 FEET TO THE TRUE POINT OF BEGINNING.

THIS TRACT CONTAINS 19.016 ACRES OF LAND AND SUBJECT TO ANY EASEMENTS OF RECORD.

DESCRIPTION - TRACT 5

A TRACT OF LAND LOCATED IN THE SOUTHEAST QUARTER OF SECTION 25, TOWNSHIP 34 NORTH, RANGE 26 WEST, PRINCIPAL MERIDIAN, MONTANA, LINCOLN COUNTY, MONTANA AND MORE PARTICULARLY DESCRIBED AS FOLLOWS:

COMMENCING AT THE SOUTHWEST CORNER OF THAT TRACT OF LAND INDICATED ON CERTIFICATE OF SURVEY NUMBER 68, RECORDS OF LINCOLN COUNTY, MONTANA AND INDICATED BY A FOUND 5/8" RE-BAR; THENCE N00°09'06"E, ON AND ALONG THE WEST BOUNDARY OF SAID TRACT INDICATED ON CERTIFICATE OF SURVEY NUMBER 68, A DISTANCE OF 572.71 FEET TO A POINT WHICH POINT IS THE TRUE POINT OF BEGINNING;

THENCE N00°09'06"E, CONTINUING ON AND ALONG SAID WEST BOUNDARY OF THAT TRACT INDICATED ON CERTIFICATE OF SURVEY NUMBER 68, A DISTANCE OF 752.22 FEET TO A POINT;

THENCE N89°31'40"W, A DISTANCE OF 179.74 FEET TO A POINT OF INTERSECTION WITH THE CENTERLINE OF FORTINE CREEK;

THENCE NORTHEASTERLY AND NORTHWESTERLY ON AND ALONG SAID CENTERLINE OF FORTINE CREEK, THE FOLLOWING EIGHT COURSES:

N24°04'45"E, A DISTANCE OF 166.76 FEET TO A POINT; N16°24'48"E, A DISTANCE OF 63.74 FEET TO A POINT; N11°49'22"E, A DISTANCE OF 45.35 FEET TO A POINT; N09°48'38"W, A DISTANCE OF 82.64 FEET TO A POINT; N32°31'45"W, A DISTANCE OF 55.12 FEET TO A POINT; N61°10'56"W, A DISTANCE OF 76.09 FEET TO A POINT; N62°06'14"W, A DISTANCE OF 97.16 FEET TO A POINT; N59°22'55"W, A DISTANCE OF 45.90 FEET TO A POINT;

THENCE S89°38'21"E, AND LEAVING SAID CENTERLINE OF FORTINE CREEK, A DISTANCE OF 1042.18 FEET TO A POINT;

THENCE S00°02'02"W, A DISTANCE OF 491.94 FEET TO A POINT;

THENCE N89°32'14"W, A DISTANCE OF 124.77 FEET TO A POINT;

THENCE S00°27'46"W, A DISTANCE OF 753.40 FEET TO A POINT;

THENCE N89°25'21"W, A DISTANCE OF 592.89 FEET TO THE TRUE POINT OF BEGINNING.

THIS TRACT CONTAINS 20.001 ACRES OF LAND AND SUBJECT TO AND TOGETHER WITH A 60-FOOT ROAD AND UTILITY EASEMENT AS SHOWN HEREON AND SUBJECT TO ANY EASEMENTS OF RECORD.

DESCRIPTION - TRACT 6

A TRACT OF LAND LOCATED IN THE SOUTH HALF OF THE SOUTHEAST QUARTER OF SECTION 25, TOWNSHIP 34 NORTH, RANGE 26 WEST, PRINCIPAL MERIDIAN, MONTANA, LINCOLN COUNTY, MONTANA AND MORE PARTICULARLY DESCRIBED AS FOLLOWS:

COMMENCING AT THE CENTER SOUTH ONE-SIXTEENTH CORNER OF SAID SECTION 25; THENCE S89°31'40"E, ON AND ALONG THE NORTH BOUNDARY OF SAID SOUTH HALF OF THE SOUTHEAST QUARTER, A DISTANCE OF 475.29 FEET TO A POINT OF INTERSECTION WITH THE CENTERLINE OF FORTINE CREEK AND WHICH POINT IS THE TRUE POINT OF BEGINNING;

THENCE S89°31'40"E, CONTINUING ON AND ALONG SAID NORTH BOUNDARY OF THE SOUTH HALF OF THE SOUTHEAST QUARTER, A DISTANCE OF 179.74 FEET TO A POINT;

THENCE S00°09'06"W, A DISTANCE OF 1294.93 FEET TO A POINT;

THENCE S89°25'21"E, A DISTANCE OF 1433.28 FEET TO A POINT WHICH POINT LIES ON THE WESTERLY RIGHT-OF-WAY BOUNDARY OF A 60-FOOT COUNTY ROAD;

THENCE S19°07'55"W, ON AND ALONG SAID WESTERLY RIGHT-OF-WAY BOUNDARY OF THE 60-FOOT COUNTY ROAD, A DISTANCE OF 31.64 FEET TO A POINT WHICH POINT LIES ON THE SOUTH BOUNDARY OF SAID SOUTH HALF OF THE SOUTHEAST QUARTER;

THENCE N89°25'21"W, ON AND ALONG SAID SOUTH BOUNDARY OF THE SOUTH HALF OF THE SOUTHEAST QUARTER, A DISTANCE OF 1942.57 FEET TO A POINT WHICH POINT LIES ON SAID CENTERLINE OF FORTINE CREEK;

THENCE NORTHEASTERLY AND NORTHWESTERLY, ON AND ALONG SAID CENTERLINE OF FORTINE CREEK, THE FOLLOWING EIGHT COURSES:

N39°47'53"E, A DISTANCE OF 196.75 FEET TO A POINT; N62°16'59"E, A DISTANCE OF 81.49 FEET TO A POINT; N49°18'55"E, A DISTANCE OF 230.15 FEET TO A POINT; N10°06'06"W, A DISTANCE OF 281.33 FEET TO A POINT; N19°56'57"W, A DISTANCE OF 322.84 FEET TO A POINT; THENCE N00°41'43"W, A DISTANCE OF 133.10 FEET TO A POINT; N19°57'29"E, A DISTANCE OF 139.42 FEET TO A POINT; N31°29'46"E, A DISTANCE OF 161.25 FEET TO THE TRUE POINT OF BEGINNING.

THIS TRACT CONTAINS 9.09 ACRES OF LAND MORE OR LESS AND SUBJECT TO ANY EASEMENTS OF RECORD.

DESCRIPTION - PARCEL B

A TRACT OF LAND LOCATED IN THE SOUTH HALF OF THE SOUTHEAST QUARTER OF SECTION 25, TOWNSHIP 34 NORTH, RANGE 26 WEST, PRINCIPAL MERIDIAN, MONTANA, LINCOLN COUNTY, MONTANA AND MORE PARTICULARLY DESCRIBED AS FOLLOWS:

COMMENCING AT THE SOUTHWEST CORNER OF TRACT 4 OF CERTIFICATE OF SURVEY NUMBER 1576, RECORDS OF LINCOLN COUNTY AND WHICH POINT IS THE TRUE POINT OF BEGINNING;

THENCE S89°25'21"E, ON AND ALONG THE SOUTH BOUNDARY OF SAID TRACT 4, A DISTANCE OF 1422.99 FEET TO A POINT WHICH POINT LIES ON THE WESTERLY RIGHT-OF-WAY BOUNDARY OF A 60-FOOT COUNTY ROAD;

THENCE N19°07'55"E, ON AND ALONG SAID WESTERLY RIGHT-OF-WAY BOUNDARY, A DISTANCE OF 31.64 FEET TO A POINT;

THENCE N89°25'21"W, AND LEAVING SAID WESTERLY RIGHT-OF-WAY BOUNDARY, A DISTANCE OF 1433.28 FEET TO A POINT WHICH POINT LIES ON THE WEST BOUNDARY OF SAID TRACT 4;

THENCE S00°09'06"W, ON AND ALONG SAID WEST BOUNDARY OF TRACT 4, A DISTANCE OF 30.00 FEET TO THE TRUE POINT OF BEGINNING.

THIS PARCEL CONTAINS 0.984 ACRE OF LAND AND SUBJECT TO ANY EASEMENTS OF RECORD.

PURPOSE OF SURVEY: THIS SURVEY IS EXEMPT FROM REVIEW AS A SUBDIVISION PURSUANT TO SECTION 76-3-201(1), WHICH STATES "IS CREATED BY ORDER OF ANY COURT OF RECORD IN THIS STATE OR BY OPERATION OF LAW OR WHICH, IN THE ABSENCE OF AN AGREEMENT BETWEEN THE PARTIES OF THE SALE, COULD BE CREATED BY AN ORDER OF ANY COURT IN THIS STATE PURSUANT TO THE LAW OF EMINENT DOMAIN." AND IS ALSO EXEMPT FROM REVIEW BY THE STATE DEPARTMENT OF HEALTH AND ENVIRONMENTAL SCIENCES PURSUANT TO SECTION 16.16.605 (1)(a), WHICH STATES "DIVISIONS CREATED BY ORDER OF ANY COURT OF RECORD IN THIS STATE OR BY OPERATION OF LAW, OR DIVISIONS WHICH, IN THE ABSENCE OF AGREEMENT BETWEEN THE PARTIES TO THE SALE, COULD BE CREATED BY AN ORDER OF ANY COURT IN THIS STATE PURSUANT TO THE LAW OF EMINENT DOMAIN."



CERTIFICATE OF SURVEY

LOCATED IN THE SOUTHEAST QUARTER OF SECTION 25, T34N, R26W, PM,M, LINCOLN COUNTY, MONTANA

COURT ORDER NO. DV-91-084

DESCRIPTION - PARCEL A

A TRACT OF LAND LOCATED IN THE NORTHWEST QUARTER OF THE SOUTHEAST QUARTER OF SECTION 25, TOWNSHIP 34 NORTH, RANGE 26 WEST, PRINCIPAL MERIDIAN, MONTANA, LINCOLN COUNTY, MONTANA AND MORE PARTICULARLY DESCRIBED AS FOLLOWS:

COMMENCING AT THE CENTER QUARTER CORNER OF SAID SECTION 25, INDICATED BY A ROUND 2" DIAMETER PIPE WITH BRASS CAP AND WHICH POINT IS THE TRUE POINT OF BEGINNING;

THENCE S89°38'21"E, ON AND ALONG THE NORTH BOUNDARY OF SAID SOUTHEAST QUARTER, A DISTANCE OF 563.57 FEET TO A POINT OF INTERSECTION WITH THE CENTERLINE OF FORTINE CREEK;

THENCE SOUTHWESTERLY AND SOUTHEASTERLY ON AND ALONG SAID CENTERLINE OF FORTINE CREEK, THE FOLLOWING EIGHTEEN COURSES:

S56°13'49"W, A DISTANCE OF 111.37 FEET TO A POINT; S06°38'18"W, A DISTANCE OF 89.19 FEET TO A POINT; S25°09'40"W, A DISTANCE OF 95.45 FEET TO A POINT; S27°43'00"W, A DISTANCE OF 96.44 FEET TO A POINT; S32°30'36"W, A DISTANCE OF 94.99 FEET TO A POINT; S33°01'36"W, A DISTANCE OF 94.54 FEET TO A POINT; S41°57'09"W, A DISTANCE OF 85.14 FEET TO A POINT; S27°51'30"W, A DISTANCE OF 97.83 FEET TO A POINT; S11°46'40"E, A DISTANCE OF 96.28 FEET TO A POINT; S50°44'12"E, A DISTANCE OF 118.33 FEET TO A POINT; S59°22'55"E, A DISTANCE OF 104.13 FEET TO A POINT; S62°06'14"E, A DISTANCE OF 97.16 FEET TO A POINT; S61°10'56"E, A DISTANCE OF 76.09 FEET TO A POINT; S32°31'45"E, A DISTANCE OF 55.12 FEET TO A POINT; S09°48'38"E, A DISTANCE OF 82.64 FEET TO A POINT; S11°49'22"W, A DISTANCE OF 45.35 FEET TO A POINT; S16°24'48"W, A DISTANCE OF 63.74 FEET TO A POINT; S24°04'45"W, A DISTANCE OF 166.76 FEET TO A POINT WHICH POINT LIES ON THE SOUTH BOUNDARY OF SAID NORTHWEST QUARTER OF THE SOUTHEAST QUARTER;

THENCE N89°31'40"W, ON AND ALONG SAID SOUTH BOUNDARY OF THE NORTHWEST QUARTER OF THE SOUTHEAST QUARTER A DISTANCE OF 475.29 FEET TO A POINT 2" DIAMETER BRASS CAP MONUMENT WHICH POINT INDICATES THE CENTER SOUTH ONE-SIXTEENTH CORNER OF SAID SECTION 25;

THENCE N00°11'16"E, ON AND ALONG THE WEST BOUNDARY OF SAID NORTHWEST QUARTER OF THE SOUTHEAST QUARTER A DISTANCE OF 1323.87 FEET TO THE TRUE POINT OF BEGINNING.

THIS TRACT CONTAINS 12.11 ACRES OF LAND MORE OR LESS AND SUBJECT TO ANY EASEMENTS OF RECORD.

DESCRIPTION - TRACT 1

A TRACT OF LAND LOCATED IN THE NORTH HALF OF THE SOUTHEAST QUARTER OF SECTION 25, TOWNSHIP 34 NORTH, RANGE 26 WEST, PRINCIPAL MERIDIAN, MONTANA, LINCOLN COUNTY, MONTANA AND MORE PARTICULARLY DESCRIBED AS FOLLOWS:

COMMENCING AT THE CENTER ONE-SIXTEENTH CORNER OF SAID SECTION 25, INDICATED BY A ROUND 2" DIAMETER BRASS CAP MONUMENT; THENCE S89°38'21"E, ON AND ALONG THE NORTH BOUNDARY OF SAID SOUTHEAST QUARTER A DISTANCE OF 563.57 FEET TO A POINT OF INTERSECTION WITH THE CENTERLINE OF FORTINE CREEK AND WHICH POINT IS THE TRUE POINT OF BEGINNING;

THENCE S89°38'21"E, CONTINUING ON AND ALONG SAID NORTH BOUNDARY OF THE SOUTHEAST QUARTER, A DISTANCE OF 809.63 FEET TO A POINT;

THENCE S00°02'02"W, A DISTANCE OF 834.50 FEET TO A POINT;

THENCE N89°38'21"W, A DISTANCE OF 1042.18 FEET TO A POINT OF INTERSECTION WITH SAID CENTERLINE OF FORTINE CREEK;

THENCE NORTHWESTERLY AND NORTHEASTERLY, ON AND ALONG SAID CENTERLINE OF FORTINE CREEK, THE FOLLOWING ELEVEN COURSES:

N59°22'55"W, A DISTANCE OF 58.23 FEET TO A POINT; N50°44'12"W, A DISTANCE OF 118.33 FEET TO A POINT; N11°46'40"W, A DISTANCE OF 96.28 FEET TO A POINT; N27°51'30"E, A DISTANCE OF 97.83 FEET TO A POINT; N41°57'09"E, A DISTANCE OF 85.14 FEET TO A POINT; N03°01'36"E, A DISTANCE OF 94.54 FEET TO A POINT; N32°30'36"E, A DISTANCE OF 94.99 FEET TO A POINT; N27°43'00"E, A DISTANCE OF 96.44 FEET TO A POINT; N25°09'40"E, A DISTANCE OF 95.45 FEET TO A POINT; N06°38'18"E, A DISTANCE OF 89.19 FEET TO A POINT; N54°13'49"E, A DISTANCE OF 111.37 FEET TO THE TRUE POINT OF BEGINNING.

THIS TRACT CONTAINS 20.001 ACRES OF LAND AND TOGETHER WITH A 60-FOOT ROAD AND UTILITY EASEMENT AS SHOWN HEREON AND SUBJECT TO ANY EASEMENTS OF RECORD.

DESCRIPTION - TRACT 2

A TRACT OF LAND LOCATED IN THE NORTH HALF OF THE SOUTHEAST QUARTER OF SECTION 25, TOWNSHIP 34 NORTH, RANGE 26 WEST, PRINCIPAL MERIDIAN, MONTANA, LINCOLN COUNTY, MONTANA AND MORE PARTICULARLY DESCRIBED AS FOLLOWS:

COMMENCING AT THE NORTHEAST CORNER OF THAT TRACT OF LAND INDICATED ON CERTIFICATE OF SURVEY NUMBER 68, RECORDS OF LINCOLN COUNTY, MONTANA, AND WHICH POINT LIES ON THE NORTH BOUNDARY OF SAID SOUTHEAST QUARTER AND WHICH POINT IS THE TRUE POINT OF BEGINNING;

THENCE S00°02'02"W, ON AND ALONG THE EAST BOUNDARY OF SAID TRACT INDICATED ON CERTIFICATE OF SURVEY NUMBER 68, A DISTANCE OF 1328.07 FEET TO A POINT;

THENCE N89°32'14"W, A DISTANCE OF 915.35 FEET TO A POINT;

THENCE N00°02'02"E, A DISTANCE OF 1326.44 FEET TO A POINT WHICH POINT LIES ON SAID NORTH BOUNDARY OF THE SOUTHEAST QUARTER;

THENCE S89°38'21"E, ON AND ALONG SAID NORTH BOUNDARY OF THE SOUTHEAST QUARTER, A DISTANCE OF 915.34 FEET TO THE TRUE POINT OF BEGINNING.

THIS TRACT CONTAINS 27.890 ACRES OF LAND AND TOGETHER WITH A 60-FOOT ROAD AND UTILITY EASEMENT AS SHOWN HEREON AND SUBJECT TO ANY EASEMENTS OF RECORD.

DESCRIPTION - TRACT 3

A TRACT OF LAND LOCATED IN THE SOUTH HALF OF THE SOUTHEAST QUARTER OF SECTION 25, TOWNSHIP 34 NORTH, RANGE 26 WEST, PRINCIPAL MERIDIAN, MONTANA, LINCOLN COUNTY, MONTANA AND MORE PARTICULARLY DESCRIBED AS FOLLOWS:

COMMENCING AT THE WESTERN CORNER OF THAT TRACT OF LAND INDICATED ON CERTIFICATE OF SURVEY NUMBER 68, RECORDS OF LINCOLN COUNTY, MONTANA, AND INDICATED BY A ROUND 5/8" IR-BAR; THENCE S00°02'02"W, ON AND ALONG THE WEST BOUNDARY OF SAID TRACT INDICATED ON CERTIFICATE OF SURVEY NUMBER 68, A DISTANCE OF 1328.07 FEET TO A POINT AND WHICH POINT IS THE TRUE POINT OF BEGINNING;

THENCE N89°32'14"W, A DISTANCE OF 1040.12 FEET TO A POINT;

THENCE S00°27'46"W, A DISTANCE OF 733.40 FEET TO A POINT;

THENCE S89°25'21"E, A DISTANCE OF 1086.30 FEET TO A POINT WHICH POINT LIES ON THE WESTERLY RIGHT-OF-WAY BOUNDARY OF A 60-FOOT COUNTY ROAD;

THENCE N19°07'55"E, ON AND ALONG SAID WESTERLY BOUNDARY OF THE 60-FOOT COUNTY ROAD, A DISTANCE OF 694.90 FEET TO A POINT OF CONVERGENCE;

THENCE NORTHEASTERLY ON AND ALONG SAID WESTERLY BOUNDARY OF THE 60-FOOT COUNTY ROAD, ON A CURVE TO THE RIGHT (CURVE - 18°34'34", RADIUS - 603.19 FEET AND RADIAL BEARING - 570°31'26"E) A DISTANCE OF 106.13 FEET TO A POINT;

THENCE N89°31'04"W, A DISTANCE OF 231.54 FEET TO THE TRUE POINT OF BEGINNING.

THIS TRACT CONTAINS 20.004 ACRES OF LAND AND SUBJECT TO AND TOGETHER WITH A 60-FOOT ROAD AND UTILITY EASEMENT AS SHOWN HEREON AND SUBJECT TO ANY EASEMENTS OF RECORD.

DESCRIPTION - TRACT 4

A TRACT OF LAND LOCATED IN THE SOUTH HALF OF THE SOUTHEAST QUARTER OF SECTION 25, TOWNSHIP 34 NORTH, RANGE 26 WEST, PRINCIPAL MERIDIAN, MONTANA, LINCOLN COUNTY, MONTANA AND MORE PARTICULARLY DESCRIBED AS FOLLOWS:

COMMENCING AT THE WESTERN CORNER OF THAT TRACT OF LAND INDICATED ON CERTIFICATE OF SURVEY NUMBER 1576, RECORDS OF LINCOLN COUNTY AND WHICH POINT IS THE TRUE POINT OF BEGINNING;

THENCE S89°25'21"E, ON AND ALONG THE SOUTH BOUNDARY OF SAID TRACT 4, A DISTANCE OF 1619.47 FEET TO A POINT WHICH POINT LIES ON THE WESTERLY RIGHT-OF-WAY BOUNDARY OF A 60-FOOT COUNTY ROAD;

THENCE S19°07'55"W, ON AND ALONG SAID WESTERLY RIGHT-OF-WAY BOUNDARY, A DISTANCE OF 572.45 FEET TO A POINT;

THENCE N89°25'21"W, AND LEAVING SAID WESTERLY RIGHT-OF-WAY BOUNDARY, A DISTANCE OF 1433.28 FEET TO A POINT WHICH POINT LIES ON THE WEST BOUNDARY OF SAID TRACT 4;

THENCE N00°09'06"E, ON AND ALONG SAID WEST BOUNDARY OF TRACT 4, A DISTANCE OF 542.71 FEET TO THE TRUE POINT OF BEGINNING.

THIS TRACT CONTAINS 19.046 ACRES OF LAND AND SUBJECT TO ANY EASEMENTS OF RECORD.

DESCRIPTION - TRACT 5

A TRACT OF LAND LOCATED IN THE SOUTHWEST QUARTER OF SECTION 25, TOWNSHIP 34 NORTH, RANGE 26 WEST, PRINCIPAL MERIDIAN, MONTANA, LINCOLN COUNTY, MONTANA AND MORE PARTICULARLY DESCRIBED AS FOLLOWS:

COMMENCING AT THE SOUTHWEST CORNER OF THAT TRACT OF LAND INDICATED ON CERTIFICATE OF SURVEY NUMBER 68, RECORDS OF LINCOLN COUNTY, MONTANA, AND INDICATED BY A ROUND 5/8" IR-BAR; THENCE N00°09'06"E, ON AND ALONG THE WEST BOUNDARY OF SAID TRACT INDICATED ON CERTIFICATE OF SURVEY NUMBER 68, A DISTANCE OF 572.71 FEET TO A POINT WHICH POINT IS THE TRUE POINT OF BEGINNING;

THENCE N00°09'06"E, CONTINUING ON AND ALONG SAID WEST BOUNDARY OF THAT TRACT INDICATED ON CERTIFICATE OF SURVEY NUMBER 68, A DISTANCE OF 752.22 FEET TO A POINT;

THENCE N89°31'40"W, A DISTANCE OF 179.74 FEET TO A POINT OF INTERSECTION WITH THE CENTERLINE OF FORTINE CREEK;

THENCE NORTHEASTERLY AND NORTHWESTERLY ON AND ALONG SAID CENTERLINE OF FORTINE CREEK, THE FOLLOWING EIGHT COURSES:

N26°04'45"E, A DISTANCE OF 166.76 FEET TO A POINT; N16°24'48"E, A DISTANCE OF 63.74 FEET TO A POINT; N11°49'22"E, A DISTANCE OF 45.35 FEET TO A POINT; N09°48'38"W, A DISTANCE OF 82.64 FEET TO A POINT; N32°31'45"W, A DISTANCE OF 55.12 FEET TO A POINT; N61°10'56"W, A DISTANCE OF 76.09 FEET TO A POINT; N62°06'14"W, A DISTANCE OF 97.16 FEET TO A POINT; N59°22'55"W, A DISTANCE OF 45.90 FEET TO A POINT;

THENCE S89°38'21"E, AND LEAVING SAID CENTERLINE OF FORTINE CREEK, A DISTANCE OF 1042.18 FEET TO A POINT;

THENCE S00°02'02"W, A DISTANCE OF 491.94 FEET TO A POINT;

THENCE N89°32'14"W, A DISTANCE OF 124.77 FEET TO A POINT;

THENCE S00°27'46"W, A DISTANCE OF 733.40 FEET TO A POINT;

THENCE N89°25'21"W, A DISTANCE OF 542.89 FEET TO THE TRUE POINT OF BEGINNING.

THIS TRACT CONTAINS 20.001 ACRES OF LAND AND SUBJECT TO AND TOGETHER WITH A 60-FOOT ROAD AND UTILITY EASEMENT AS SHOWN HEREON AND SUBJECT TO ANY EASEMENTS OF RECORD.

DESCRIPTION - TRACT 6

A TRACT OF LAND LOCATED IN THE SOUTH HALF OF THE SOUTHEAST QUARTER OF SECTION 25, TOWNSHIP 34 NORTH, RANGE 26 WEST, PRINCIPAL MERIDIAN, MONTANA, LINCOLN COUNTY, MONTANA AND MORE PARTICULARLY DESCRIBED AS FOLLOWS:

COMMENCING AT THE CENTER SOUTH ONE-SIXTEENTH CORNER OF SAID SECTION 25; THENCE S89°31'40"E, ON AND ALONG THE NORTH BOUNDARY OF SAID SOUTH HALF OF THE SOUTHEAST QUARTER, A DISTANCE OF 475.29 FEET TO A POINT OF INTERSECTION WITH THE CENTERLINE OF FORTINE CREEK AND WHICH POINT IS THE TRUE POINT OF BEGINNING;

THENCE S89°31'40"E, CONTINUING ON AND ALONG SAID NORTH BOUNDARY OF THE SOUTH HALF OF THE SOUTHEAST QUARTER, A DISTANCE OF 179.74 FEET TO A POINT;

THENCE S00°09'06"W, A DISTANCE OF 1294.93 FEET TO A POINT;

THENCE S89°25'21"E, A DISTANCE OF 1433.28 FEET TO A POINT WHICH POINT LIES ON THE WESTERLY RIGHT-OF-WAY BOUNDARY OF A 60-FOOT COUNTY ROAD;

THENCE S19°07'55"W, ON AND ALONG SAID WESTERLY RIGHT-OF-WAY BOUNDARY OF THE 60-FOOT COUNTY ROAD, A DISTANCE OF 31.64 FEET TO A POINT WHICH POINT LIES ON THE SOUTH BOUNDARY OF SAID SOUTH HALF OF THE SOUTHEAST QUARTER;

THENCE N89°25'21"W, ON AND ALONG SAID SOUTH BOUNDARY OF THE SOUTH HALF OF THE SOUTHEAST QUARTER, A DISTANCE OF 1942.57 FEET TO A POINT WHICH POINT LIES ON SAID CENTERLINE OF FORTINE CREEK;

THENCE NORTHEASTERLY AND NORTHWESTERLY, ON AND ALONG SAID CENTERLINE OF FORTINE CREEK, THE FOLLOWING EIGHT COURSES:

N09°47'55"E, A DISTANCE OF 196.75 FEET TO A POINT; N62°16'59"E, A DISTANCE OF 81.49 FEET TO A POINT; N49°18'59"E, A DISTANCE OF 230.15 FEET TO A POINT; N10°06'06"W, A DISTANCE OF 281.33 FEET TO A POINT; N19°34'57"W, A DISTANCE OF 322.84 FEET TO A POINT; THENCE N00°41'43"W, A DISTANCE OF 133.10 FEET TO A POINT; N19°57'29"E, A DISTANCE OF 139.42 FEET TO A POINT; N51°29'48"E, A DISTANCE OF 161.25 FEET TO THE TRUE POINT OF BEGINNING.

THIS TRACT CONTAINS 9.09 ACRES OF LAND MORE OR LESS AND SUBJECT TO ANY EASEMENTS OF RECORD.

DESCRIPTION - PARCEL B

A TRACT OF LAND LOCATED IN THE SOUTH HALF OF THE SOUTHEAST QUARTER OF SECTION 25, TOWNSHIP 34 NORTH, RANGE 26 WEST, PRINCIPAL MERIDIAN, MONTANA, LINCOLN COUNTY, MONTANA AND MORE PARTICULARLY DESCRIBED AS FOLLOWS:

COMMENCING AT THE SOUTHWEST CORNER OF TRACT 4 OF CERTIFICATE OF SURVEY NUMBER 1576, RECORDS OF LINCOLN COUNTY AND WHICH POINT IS THE TRUE POINT OF BEGINNING;

THENCE S89°25'21"E, ON AND ALONG THE SOUTH BOUNDARY OF SAID TRACT 4, A DISTANCE OF 1422.99 FEET TO A POINT WHICH POINT LIES ON THE WESTERLY RIGHT-OF-WAY BOUNDARY OF A 60-FOOT COUNTY ROAD;

THENCE N19°07'55"E, ON AND ALONG SAID WESTERLY RIGHT-OF-WAY BOUNDARY, A DISTANCE OF 31.64 FEET TO A POINT;

THENCE N89°25'21"W, AND LEAVING SAID WESTERLY RIGHT-OF-WAY BOUNDARY, A DISTANCE OF 1433.28 FEET TO A POINT WHICH POINT LIES ON THE WEST BOUNDARY OF SAID TRACT 4;

THENCE S00°09'06"W, ON AND ALONG SAID WEST BOUNDARY OF TRACT 4, A DISTANCE OF 30.00 FEET TO THE TRUE POINT OF BEGINNING.

THIS PARCEL CONTAINS 0.964 ACRES OF LAND AND SUBJECT TO ANY EASEMENTS OF RECORD.

PURPOSE OF SURVEY: THIS SURVEY IS EXEMPT FROM REVIEW AS A SUBDIVISION PURSUANT TO SECTION 76-3-201(1), WHICH STATES "IS CREATED BY ORDER OF ANY COURT OF RECORD IN THIS STATE OR BY OPERATION OF LAW OR WHICH, IN THE ABSENCE OF AN AGREEMENT BETWEEN THE PARTIES OF THE SALE, COULD BE CREATED BY AN ORDER OF ANY COURT IN THIS STATE PURSUANT TO THE LAW OF EMINENT DOMAIN." AND IS ALSO EXEMPT FROM REVIEW BY THE STATE DEPARTMENT OF HEALTH AND ENVIRONMENTAL SCIENCES PURSUANT TO SECTION 16.16.605 (1)(a), WHICH STATES "DIVISIONS CREATED BY ORDER OF ANY COURT OF RECORD IN THIS STATE OR BY OPERATION OF LAW, OR DIVISIONS WHICH, IN THE ABSENCE OF AGREEMENT BETWEEN THE PARTIES TO THE SALE, COULD BE CREATED BY AN ORDER OF ANY COURT IN THIS STATE PURSUANT TO THE LAW OF EMINENT DOMAIN."

