

# CERTIFICATE OF SURVEY

## DEPENDENT RESURVEY AND RETRACEMENT OF M.S. NO. 4968-B & M.S. NO. 5050 IN SECTIONS 16 & 17 UNSURVEYED T.34N., R.33W., P.M.MT.

KOOTENAI NATIONAL FOREST  
LINCOLN COUNTY, MONTANA  
MARCH 1991

### FOREST SUPERVISOR'S CERTIFICATE

This survey was made at my request for National Forest Management purposes.

*Robert L. Schrenk*  
Robert L. Schrenk, Forest Supervisor

### PURPOSE OF SURVEY

The purpose of this survey is to locate upon the ground the title lines of record between private lands and National Forest Systems Lands. No division of land is hereby created. Project name: Goldstone Lodes, date of survey: August 1990.

### HISTORY OF SURVEY

August 1896 Keystone Lode M.S. No. 4968 by Abram A. Jaqueth.  
November 1896 Goldflint Lode M.S. No. 5050 by Abram A. Jaqueth.  
July 1897 Jill Hill Lode M.S. No. 5135 by Galen H. Wheeler.  
October 1897 Amended Keystone Lode M.S. 4968-B by Abram A. Jaqueth.  
1983 Corner Recordations filed by T.C. Hill 5612S

### METHOD OF SURVEY

A one second Total Station and Electronic Data Collector was used with conventional closed traverse procedures to tie original controlling corners. Offsets to true line were computed for marking and posting the property lines. The location of the monuments set this survey meets the positional tolerance standard referenced in the USDA, Forest Service, Region One, Cadastral Contract Specifications manual, dated March 1987.

### BASIS OF BEARING

Bearing are based on solar observation taken from USLM 4968 to Corner 1 MS 4968, S31°18'41"E.

### SURVEYORS NOTES

Many of the original corner posts were not found after a diligent search for both the location corners and the lode corners and were considered lost. Ties to buildings and cabins, shown on the original plats and in the original field notes, were considered, however due to their poor condition and decay, they were not used to reestablish lode corners. Grant boundary and broken boundary methods of proportion were used as best fit for reestablishment of the lost corners, which caused the end and side lines to be substantially parallel. Refer to Corner Recordations for each lode corner set or maintained, filed with the Clerk and Recorder, Lincoln County Courthouse, Libby, Montana. This survey was done at the request and cooperation of the landowner for mutual benefit.

### SURVEYOR'S CERTIFICATE:

I hereby certify that I am a Registered Land Surveyor in the state of Montana that the survey shown on this Certificate of Survey has been prepared in accordance with Montana Code Annotated (Sections 76-3-101 through 76-3-614) and the Lincoln County regulations adopted pursuant thereto.

*Alvah F. Hughes* 7322LS May 2 1991  
Alvah F. Hughes Montana Registration No. 7322LS

### CERTIFICATE OF EXAMINING OFFICER

Approved this 8<sup>th</sup> day of May 1991, A.D.

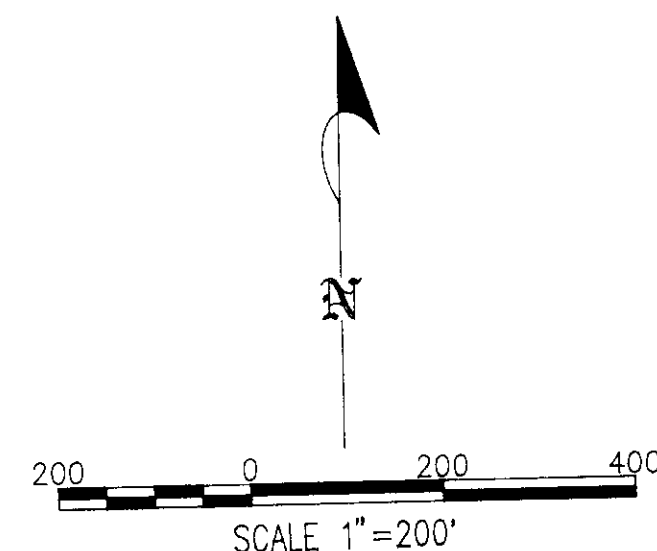
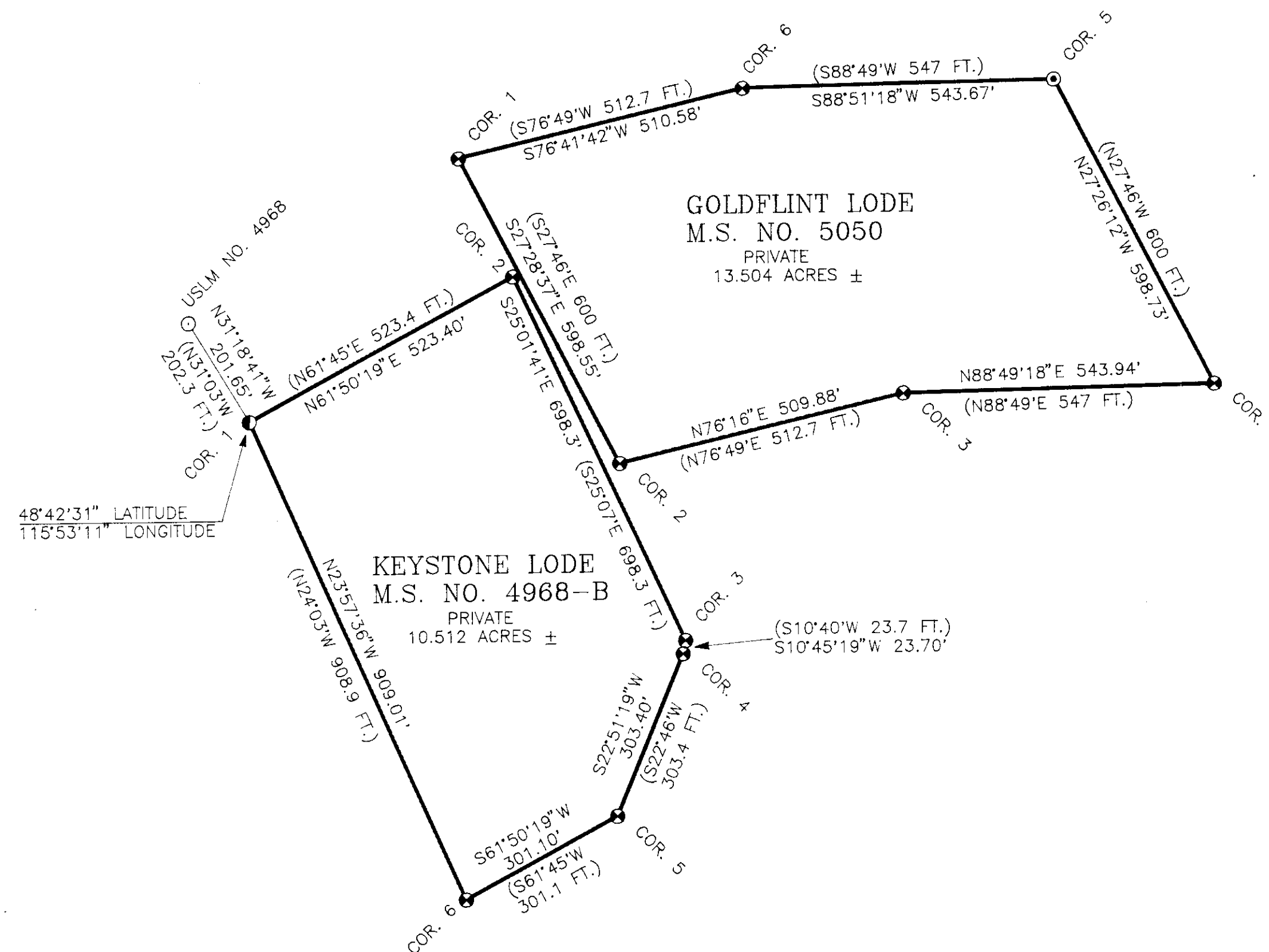
*Bill J. Buschhoff*  
Examining Officer

Approved L. G. Abigail  
Chairman, Lincoln County Commissioners

### CERTIFICATE OF CLERK AND RECORDER:

State of Montana, County of Lincoln, filed this 8<sup>th</sup> day  
of May 1991, A.D. at 1:25 o'clock p.m.  
*Coral M. Cummings* by *Debbie Orr*  
County Clerk Recorder Deputy

CERTIFICATE OF SURVEY NO. 1836



### LEGEND

- Tree Corner - scribed tree and set a 2 1/2" dia. aluminum pipe with 3 1/4" dia. aluminum cap for Reference Monument.
- U.S.L.M. No. 4968 - found a cross "X" in limestone ledge, see Corner Recordation filed by T. Hill, 5612S.
- Found 2 1/2" dia. aluminum pipe with 3 1/4" dia. aluminum cap, see Corner Recordation filed by T. Hill, 5612S.
- Set a 2 1/2" dia. aluminum pipe with a 3 1/4" dia. aluminum cap, marked 7322LS.
- ( ) Original mineral survey record
- National forest boundary line - marked & posted to U.S.F.S., R-1, standards.