

CERTIFICATE OF SURVEY

NE 1/4 SECTION 9, T. 26 N., R. 27 W., P.M.M.,
LINCOLN COUNTY, MONTANA

LEGAL DESCRIPTION TRACT I

THE NORTHEAST ONE-QUARTER (NE 1/4) SECTION 9 T.26 N., R.27 W., PRINCIPAL MERIDIAN MONTANA, LINCOLN COUNTY, MONTANA AND MORE PARTICULARLY DESCRIBED BY A METES AND BOUNDS SURVEY AS FOLLOWS:

BEGINNING AT THE ONE-QUARTER CORNER COMMON TO SECTION 9 AND 10 T.26 N., R.27 W., THENCE N00°07'54"E, 1238.67 FEET ALONG THE SECTION LINE BETWEEN SECTIONS 9 AND 10 TO THE MEANDER CORNER BETWEEN SECTION 9 AND 10 ON THE SOUTH SHORE OF MIDDLE THOMPSON LAKE; THENCE CONTINUING ALONG SAID SECTION LINE N00°07'54"E, 16.31 FEET TO AN INTERSECTION WITH THE APPROXIMATE LOW WATER LINE OF SAID MIDDLE THOMPSON LAKE; THENCE THE FOLLOWING FORTY FIVE (45) COURSES ALONG SAID LOW WATER LINE [1] N53°28'37"W, 68.10 FEET, [2] N44°38'45"W, 45.54 FEET, [3] N34°40'35"W, 28.82 FEET, [4] N19°46'31"W, 27.20 FEET, [5] N08°10'45"E, 36.57 FEET, [6] N48°07'22"W, 27.27 FEET, [7] N58°47'31"W, 56.93 FEET, [8] N63°15'59"W, 59.13 FEET, [9] N77°58'46"W, 41.30 FEET, [10] N86°49'44"W, 55.98 FEET, [11] S76°05'39"W, 33.69 FEET, [12] S88°05'21"W, 63.04 FEET, [13] N75°40'16"W, 114.35 FEET, [14] N69°58'44"W, 60.46 FEET, [15] N63°05'13"W, 89.26 FEET, [16] N59°32'04"W, 61.73 FEET, [17] N53°25'53"W, 56.40 FEET, [18] N44°24'01"W, 107.63 FEET, [19] N44°49'38"W, 141.28 FEET, [20] N41°10'29"W, 85.82 FEET, [21] N56°33'14"W, 25.40 FEET, [22] N82°07'50"W, 27.76 FEET, [23] S48°20'56"W, 49.65 FEET, [24] S34°48'26"W, 82.69 FEET, [25] S46°39'11"W, 51.43 FEET, [26] S54°36'59"W, 49.91 FEET, [27] S67°05'35"W, 49.84 FEET, [28] S75°41'13"W, 40.86 FEET, [29] S82°27'31"W, 38.84 FEET, [30] N84°06'59"W, 35.09 FEET, [31] N69°23'18"W, 96.58 FEET, [32] N61°22'39"W, 46.14 FEET, [33] N56°58'33"W, 37.80 FEET, [34] N50°47'53"W, 105.05 FEET, [35] N45°01'47"W, 138.52 FEET, [36] N39°19'49"W, 113.12 FEET, [37] N33°27'45"W, 145.64 FEET, [38] N41°04'39"W, 114.75 FEET, [39] N30°50'14"W, 56.95 FEET, [40] N24°50'35"W, 62.37 FEET, [41] N17°18'37"W, 117.63 FEET, [42] N09°59'39"W, 40.92 FEET, [43] N04°31'49"W, 120.27 FEET, [44] N00°40'00"W, 102.71 FEET, [45] N00°34'06"E, 41.06 FEET TO THE INTERSECTION WITH THE SECTION LINE BETWEEN SECTIONS 4 AND 9; THENCE S89°55'16"W, 574.28 FEET ALONG SAID SECTION LINE TO THE ONE-QUARTER (1/4) CORNER COMMON TO SECTIONS 4 AND 9; THENCE S00°12'58"W, 2709.86 FEET ALONG THE NORTH-SOUTH MID-SECTION LINE TO THE CENTER ONE-QUARTER (1/4) CORNER SECTION 9; THENCE S88°48'39"E, 2627.40 FEET ALONG THE EAST-WEST MID-SECTION LINE TO THE ONE-QUARTER (1/4) CORNER COMMON TO SECTIONS 9 AND 10 THE POINT OF BEGINNING. CONTAINING 116.71 ACRES, AND BEING SUBJECT TO ALL EASEMENTS, DEDICATIONS AND RESTRICTIONS SHOWN, EXISTING OR OF RECORD.

SURVEYORS CERTIFICATION

I CERTIFY THAT THIS IS A TRUE AND CORRECT REPRESENTATION OF A SURVEY PERFORMED BY ME OR UNDER MY DIRECT SUPERVISION, DURING THE MONTH OF FEBRUARY, 1990.

TERRY L. DRUYVESTEIN, P.E., R.L.S.
MONTANA REGISTRATION NO. 2927 ES

4-23-90
DATE

APPROVED

REVIEWER
CHAIRMAN, BOARD OF COUNTY COMMISSIONERS

4-26-90
DATE

4-26-90
DATE

PURPOSE OF SURVEY

THIS SURVEY IS FILED WITH THE INTENT TO QUALIFY FOR THE EXEMPTION FOUND IN:
RETRACE THE EXTERIOR BOUNDARIES OF AN EXISTING PARCEL AND NO DIVISION OF LAND IS HEREBY CREATED PURSUANT TO SECTION 76-3-404, M.C.A.

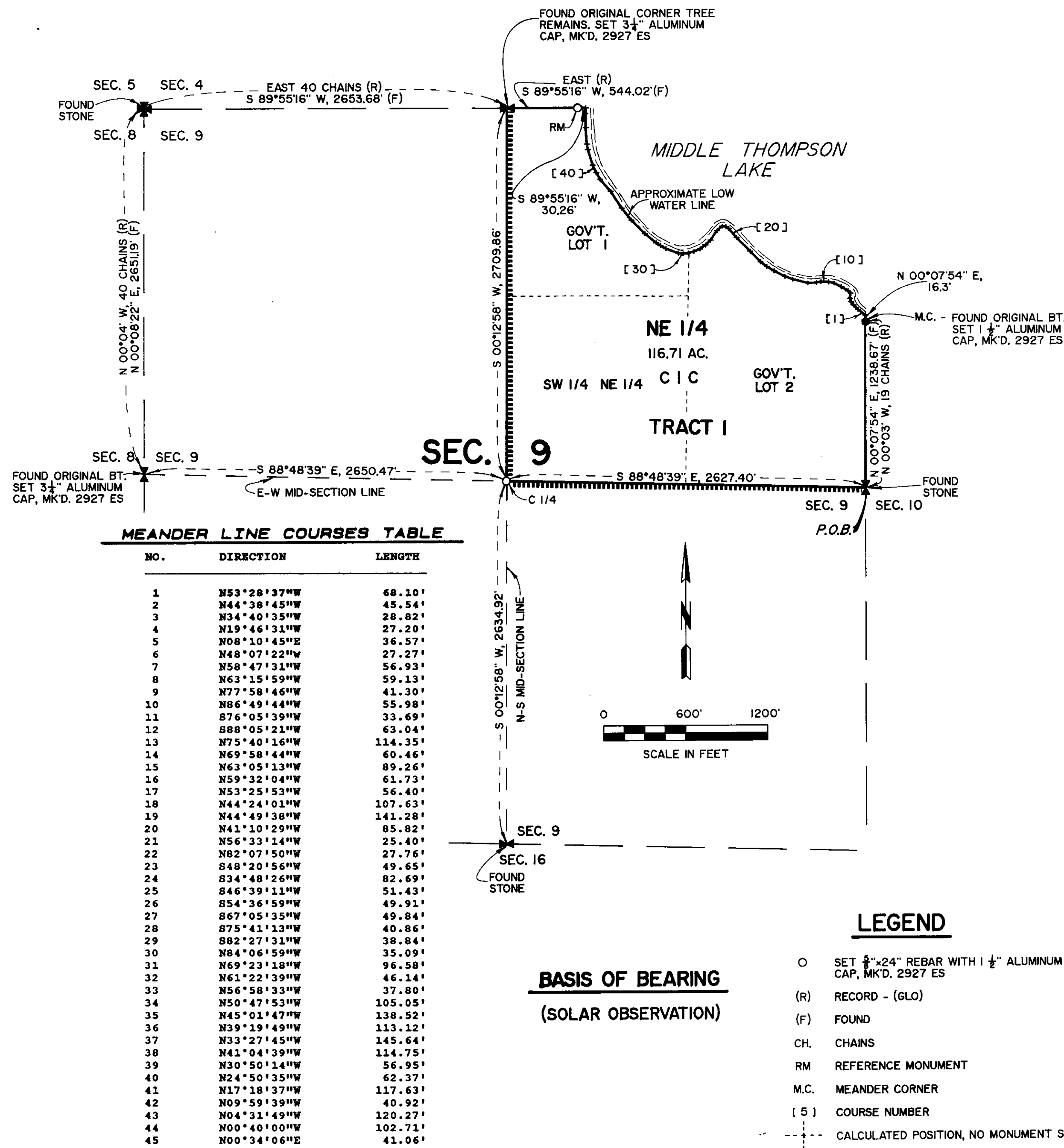
1/4	SEC.	T.	R.
1	9	26	N 27 W
2			
3			
4			
5			
6			
7			
8			
9			
10			
11			
12			
13			
14			
15			
16			
17			
18			
19			
20			
21			
22			
23			
24			
25			
26			
27			
28			
29			
30			
31			
32			
33			
34			
35			
36			
37			
38			
39			
40			
41			
42			
43			
44			
45			

STATE OF MONTANA } SS.
COUNTY OF LINCOLN }

FILED ON THE 26th DAY OF April
1990, AT 1:05 O'CLOCK P.M.
COUNTY CLERK AND RECORDER

BY Deputy
INSTRUMENT REC. NO.

CERTIFICATE OF SURVEY NO. 1758



PREPARED BY:

Stensatter Druyvestein & Associates
CONSULTING ENGINEERS
MISSOULA MONTANA

OWNER OF RECORD

CHAMPION INTERNATIONAL
CORPORATION