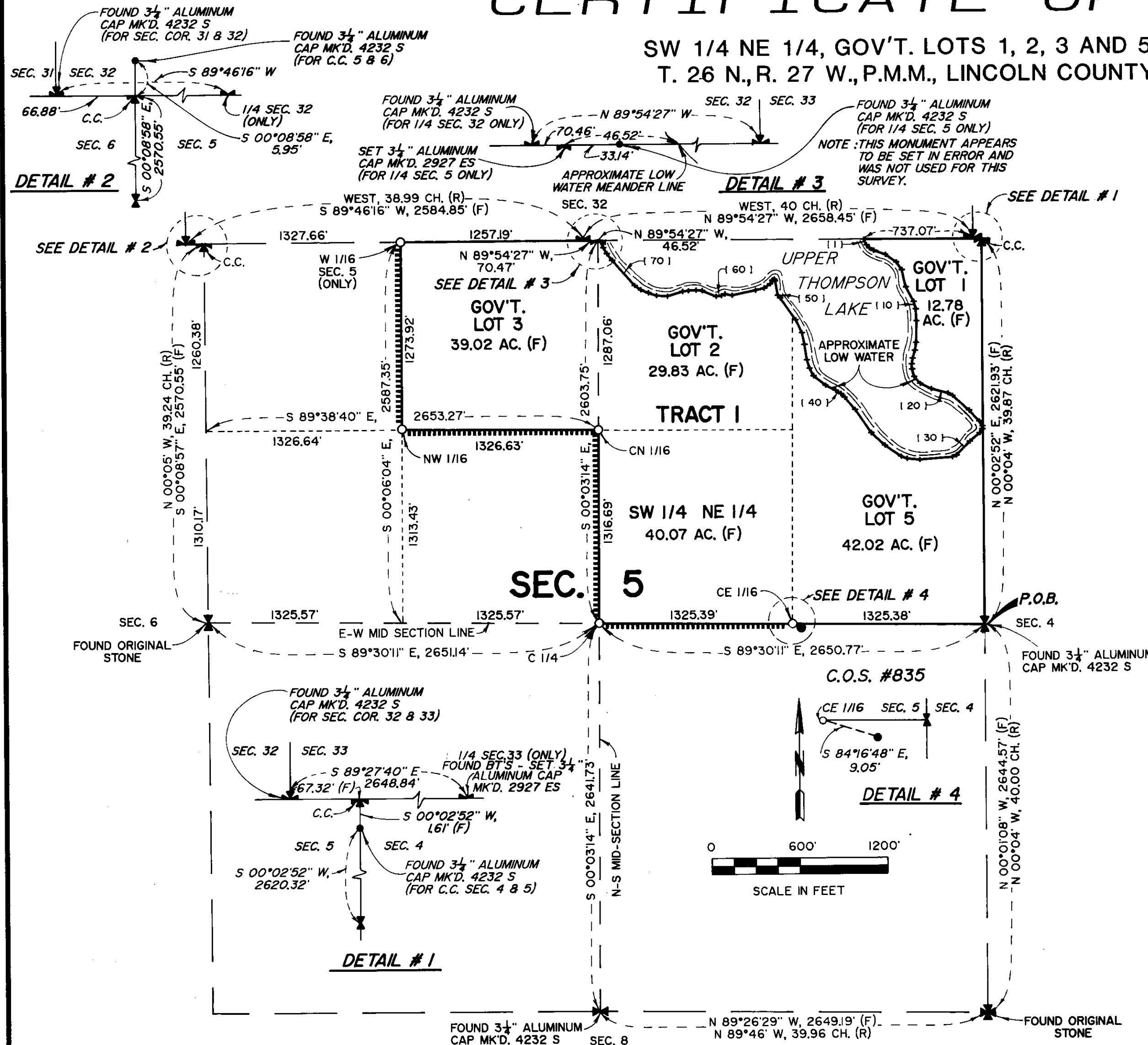


# CERTIFICATE OF SURVEY

SW 1/4 NE 1/4, GOV'T. LOTS 1, 2, 3 AND 5 SECTION 5,  
T. 26 N., R. 27 W., P.M.M., LINCOLN COUNTY, MONTANA



## LEGAL DESCRIPTION: TRACT I

GOVERNMENT LOTS 1, 2, 3, 5 AND THE SOUTHWEST ONE-QUARTER OF THE NORTHEAST ONE-QUARTER (SW 1/4 NE 1/4) SECTION 5, TOWNSHIP 26 NORTH, RANGE 27 WEST, PRINCIPAL MERIDIAN MONTANA, LINCOLN COUNTY, MONTANA, BEING MORE PARTICULARLY DESCRIBED BY THE FOLLOWING METES AND BOUNDS DESCRIPTION:

BEGINNING AT THE ONE-QUARTER (1/4) CORNER COMMON TO SECTIONS 4 AND 5 TOWNSHIP 26 NORTH, RANGE 27 WEST, THENCE N00°02'52\"E, 2621.93 FEET ALONG THE SECTION LINE COMMON TO SAID SECTIONS 4 AND 5 TO THE CLOSING CORNER OF SAID SECTIONS 4 AND 5 ON THE TOWNSHIP LINE OF 26 AND 27 NORTH; THENCE N89°27'40\"W, 67.32 FEET ALONG SAID TOWNSHIP LINE TO THE SECTION CORNER COMMON TO SECTIONS 32 AND 33 TOWNSHIP 27 NORTH, RANGE 27 WEST; THENCE CONTINUING ALONG SAID TOWNSHIP LINE N89°54'27\"W, 737.07 FEET TO AN INTERSECTION WITH THE APPROXIMATE LOW WATER LINE OF UPPER THOMPSON LAKE; THENCE THE FOLLOWING SEVENTY-FOUR (74) COURSES ALONG SAID LOW WATER LINE: [1] S19°41'51\"E, 7.79 FEET, [2] S25°35'52\"E, 37.03 FEET, [3] S41°28'31\"E, 27.63 FEET, [4] S58°46'04\"E, 32.98 FEET, [5] S70°47'31\"E, 84.50 FEET, [6] S55°02'55\"E, 90.77 FEET, [7] S35°36'08\"E, 64.94 FEET, [8] S13°14'17\"E, 120.50 FEET, [9] S28°12'08\"E, 111.09 FEET, [10] S14°53'59\"E, 53.29 FEET, [11] S02°56'47\"E, 79.80 FEET, [12] S01°10'09\"W, 147.03 FEET, [13] S10°10'53\"W, 53.74 FEET, [14] S16°38'02\"W, 55.21 FEET, [15] S09°06'42\"W, 40.41 FEET, [16] S03°35'34\"E, 35.17 FEET, [17] S15°27'20\"E, 52.91 FEET, [18] S40°34'42\"E, 62.41 FEET, [19] S64°08'44\"E, 82.79 FEET, [20] S75°03'51\"E, 118.71 FEET, [21] S60°46'00\"E, 34.61 FEET, [22] S48°01'07\"E, 150.39 FEET, [23] S42°26'32\"E, 102.99 FEET, [24] S34°39'41\"E, 37.45 FEET, [25] S34°39'41\"E, 7.22 FEET TO AN INTERSECTION WITH THE SECTION LINE COMMON TO SAID SECTIONS 4 AND 5, [26] S00°02'52\"W, 8.67 FEET ALONG SAID SECTION LINE, [27] LEAVING SAID SECTION LINE S34°46'48\"W, 8.76 FEET, [28] S34°46'47\"W, 31.90 FEET, [29] S49°57'53\"W, 89.08 FEET, [30] S44°34'07\"W, 131.39 FEET, [31] S65°40'03\"W, 31.06 FEET, [32] S85°46'13\"W, 222.40 FEET, [33] N84°21'16\"W, 88.43 FEET, [34] N69°42'44\"W, 42.11 FEET, [35] N55°16'40\"W, 133.96 FEET, [36] N46°57'44\"W, 126.01 FEET, [37] N34°32'01\"W, 192.28 FEET, [38] N40°14'47\"W, 110.05 FEET, [39] N45°54'34\"W, 35.64 FEET, [40] N55°40'29\"W, 42.38 FEET, [41] N63°12'11\"W, 77.63 FEET, [42] N51°31'15\"W, 103.34 FEET, [43] N26°54'56\"W, 58.32 FEET, [44] N17°19'28\"W, 60.13 FEET, [45] N08°37'44\"W, 105.29 FEET, [46] N11°44'16\"W, 81.61 FEET, [47] N25°32'23\"W, 97.42 FEET, [48] N35°22'52\"W, 92.49 FEET, [49] N35°22'52\"W, 89.89 FEET, [50] N40°34'20\"W, 23.83 FEET, [51] N10°17'57\"W, 100.11 FEET, [52] N33°24'40\"W, 11.62 FEET, [53] S64°19'49\"W, 14.31 FEET, [54] S29°40'40\"W, 28.89 FEET, [55] S57°07'47\"W, 50.48 FEET, [56] S76°01'56\"W, 60.07 FEET, [57] S78°11'59\"W, 162.84 FEET, [58] N79°15'19\"W, 51.50 FEET, [59] S63°44'04\"W, 25.32 FEET, [60] S83°51'43\"W, 37.41 FEET, [61] N67°32'35\"W, 102.36 FEET, [62] N85°03'40\"W, 42.96 FEET, [63] S86°06'16\"W, 51.52 FEET, [64] S81°57'01\"W, 40.70 FEET, [65] S73°34'24\"W, 106.45 FEET, [66] N86°02'29\"W, 76.79 FEET, [67] N71°29'59\"W, 57.68 FEET, [68] N67°36'32\"W, 55.92 FEET, [69] N55°24'01\"W, 50.54 FEET, [70] N41°32'24\"W, 229.66 FEET, [71] N37°41'42\"W, 58.39 FEET, [72] N29°55'34\"W, 47.31 FEET, [73] N22°27'39\"W, 46.85 FEET, [74] N45°46'27\"W, 8.67 FEET TO AN INTERSECTION WITH SAID TOWNSHIP LINE OF 26 AND 27 NORTH; THENCE LEAVING SAID LOW WATER LINE, N89°54'27\"W, 46.52 FEET ALONG SAID TOWNSHIP LINE BETWEEN SECTIONS 5 AND 32, TO THE NORTH ONE-QUARTER (1/4) CORNER SECTION 5 (ONLY) AS ESTABLISHED BY THIS SURVEY; THENCE CONTINUING ALONG SAID TOWNSHIP LINE N89°54'27\"W, 70.46 FEET TO THE SOUTH ONE-QUARTER (1/4) CORNER SECTION 32 (ONLY); THENCE CONTINUING ALONG SAID TOWNSHIP LINE S89°46'16\"W, 1257.19 FEET TO THE WEST ONE-SIXTEENTH (1/16) CORNER OF SECTION 5 (ONLY); THENCE S00°06'04\"E, 1273.92 FEET ALONG THE WEST ONE-SIXTEENTH (1/16) LINE TO THE NORTHWEST ONE-SIXTEENTH (NW 1/16) CORNER OF SAID SECTION 5; THENCE S89°38'40\"E, 1326.63 FEET ALONG THE NORTH ONE-SIXTEENTH (N 1/16) LINE TO THE CENTER-NORTH ONE-SIXTEENTH (CN 1/16) CORNER OF SAID SECTION 5; THENCE ALONG THE NORTH-SOUTH MID-SECTION LINE S00°03'14\"E, 1316.69 FEET TO THE CENTER ONE-QUARTER (1/4) CORNER OF SAID SECTION 5; THENCE ALONG THE EAST-WEST MID-SECTION LINE S89°30'11\"E, 2650.77 FEET TO THE ONE-QUARTER (1/4) CORNER COMMON TO SAID SECTIONS 4 AND 5 THE POINT OF BEGINNING. CONTAINING 163.72 ACRES, SUBJECT TO ALL EASEMENTS, DEDICATIONS, AND RESTRICTIONS SHOWN, EXISTING OR OF RECORD.

## SURVEYORS CERTIFICATION

I CERTIFY THAT THIS IS A TRUE AND CORRECT REPRESENTATION OF A SURVEY PERFORMED BY ME OR UNDER MY DIRECT SUPERVISION, DURING THE MONTH OF APRIL, 1990.

*Terry L. Druyvestein*  
TERRY L. DRUYVESTEIN, P.E., R.L.S.  
MONTANA REGISTRATION NO. 2927 ES  
DATE 4-23-90

## APPROVED

CHAIRMAN, BOARD OF COUNTY COMMISSIONERS

## PURPOSE OF SURVEY

THIS SURVEY IS FILED WITH THE INTENT TO QUALIFY FOR THE EXEMPTION FOUND IN:

RETRACE THE EXTERIOR BOUNDARIES OF AN EXISTING PARCEL AND NO DIVISION OF LAND IS HEREBY CREATED PURSUANT TO SECTION 76-3-404, M.C.A.

1/4	SEC.	T.	R.
<input checked="" type="checkbox"/>	5	26 N	27 W
<input type="checkbox"/>			
<input type="checkbox"/>			
<input type="checkbox"/>			
<input type="checkbox"/>			
<input type="checkbox"/>			
<input type="checkbox"/>			
<input type="checkbox"/>			

STATE OF MONTANA }  
COUNTY OF LINCOLN } SS.  
FILED ON THE 26<sup>th</sup> DAY OF April,  
1990, AT 1:00 O'CLOCK P.M.  
COUNTY CLERK AND RECORDER  
BY *Debbie L. Morris* DEPUTY  
INSTRUMENT REC. NO. \_\_\_\_\_  
CERTIFICATE OF SURVEY NO. 1757

NO.	DIRECTION	LENGTH
1	S19°41'51\"E	7.79
2	S25°35'52\"E	37.03
3	S41°28'31\"E	27.63
4	S58°46'04\"E	32.98
5	S70°47'31\"E	84.50
6	S55°02'55\"E	90.77
7	S35°36'08\"E	64.94
8	S13°14'17\"E	120.50
9	S28°12'08\"E	111.09
10	S14°53'59\"E	53.29
11	S02°56'47\"E	79.80
12	S01°10'09\"W	147.03
13	S10°10'53\"W	53.74
14	S16°38'01\"W	55.21
15	S09°06'42\"W	40.41
16	S03°35'34\"E	35.17
17	S15°27'20\"E	52.91
18	S40°34'42\"E	62.41
19	S64°08'44\"E	82.79
20	S75°03'51\"E	118.71
21	S60°46'00\"E	34.61
22	S48°01'07\"E	150.39
23	S42°26'32\"E	102.99
24	S34°39'41\"E	37.45
25	S34°39'41\"E	7.22

## MEANDER LINE TABLE

NO.	DIRECTION	LENGTH
26	S00°02'51\"W	8.67
27	S34°46'48\"W	8.76
28	S34°46'47\"W	31.90
29	S49°57'52\"W	89.08
30	S44°34'07\"W	131.39
31	S65°40'02\"W	31.06
32	S85°46'13\"W	222.40
33	N84°21'16\"W	88.43
34	N69°42'44\"W	42.11
35	N55°16'40\"W	133.96
36	N46°57'44\"W	126.01
37	N34°32'00\"W	192.28
38	N40°14'47\"W	110.05
39	N45°54'34\"W	35.64
40	N55°40'29\"W	42.38
41	N63°12'11\"W	77.63
42	N51°31'15\"W	103.34
43	N26°54'56\"W	58.32
44	N17°19'28\"W	60.13
45	N08°37'44\"W	105.29
46	N11°44'16\"W	81.61
47	N25°32'23\"W	97.42
48	N35°22'52\"W	92.49
49	N35°22'52\"W	89.89
50	N40°34'20\"W	23.83

NO.	DIRECTION	LENGTH
51	N10°17'57\"W	100.11
52	N33°24'40\"W	11.62
53	S64°19'49\"W	14.31
54	S29°40'40\"W	28.89
55	S57°07'47\"W	50.48
56	S76°01'56\"W	60.07
57	S78°11'59\"W	162.84
58	N79°15'19\"W	51.50
59	S63°44'04\"W	25.32
60	S83°51'43\"W	37.41
61	N67°32'35\"W	102.36
62	N85°03'40\"W	42.96
63	S86°06'16\"W	51.52
64	S81°57'00\"W	40.70
65	S73°34'24\"W	106.45
66	N86°02'29\"W	76.79
67	N71°29'59\"W	57.68
68	N67°36'32\"W	55.92
69	N55°24'01\"W	50.54
70	N41°32'24\"W	229.66
71	N37°41'42\"W	58.39
72	N29°55'34\"W	47.31
73	N22°27'38\"W	46.85
74	N45°46'27\"W	8.67

## LEGEND

- SET 1/2\"x24\" REBAR WITH 1/4\" ALUMINUM CAP, MK'D. 2927 ES
- (R) RECORD
- (F) FOUND
- CH. CHAINS
- C.C. CLOSING CORNER
- CALCULATED POSITION, NO MONUMENT SET
- BOUNDARY POSTED AND MARKED
- FOUND 1/4\" YPC MARKED MDL 4232S

PREPARED BY:  
**Stensatter Druyvestein & Associates**  
CONSULTING ENGINEERS  
MISSOULA MONTANA

**BASIS OF BEARING**  
(SOLAR OBSERVATION)

**OWNER OF RECORD**  
**CHAMPION INTERNATIONAL**  
**CORPORATION**