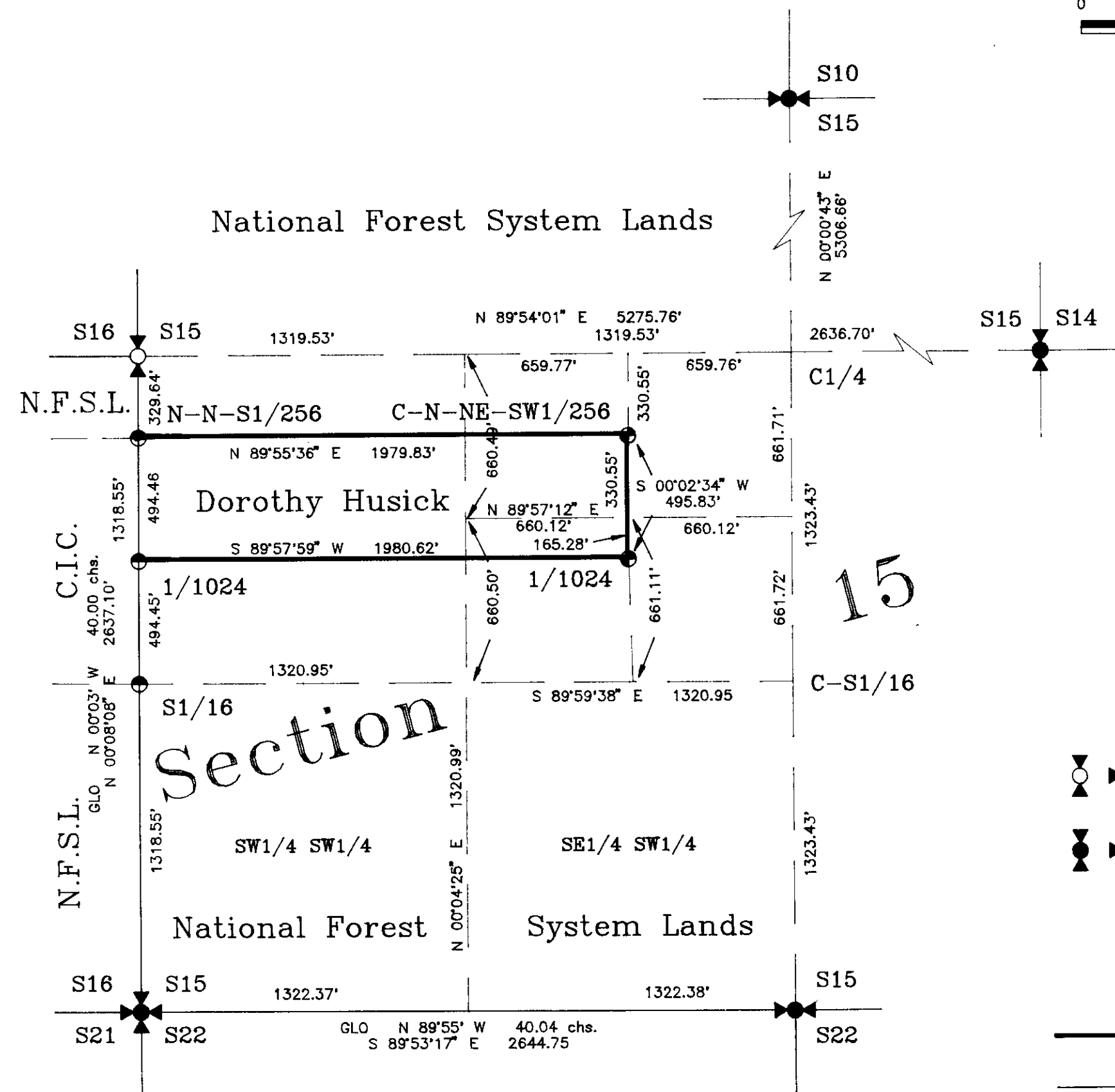


CERTIFICATE OF SURVEY  
DEPENDENT RESURVEY AND SECTION SUBDIVISION  
OF SECTION 15, T.32N., R.28W., P.M.MT.

KOOTENAI NATIONAL FOREST  
LINCOLN COUNTY, MONTANA  
JANUARY 1990



0 250 500 1000 1500  
SCALE IN FEET



LEGEND

- Found a BLM 2-1/2" diameter iron post monument with a 3-1/4" diameter brass cap.
- Found original stone. Remonumented with a USDA-USFS 2-1/2" x 30" aluminum pipe with a 3-1/4" diameter aluminum cap marked 7322-S.
- Set a 3/4" x 30" aluminum rod with 3-1/4" diameter aluminum cap marked 7322-S.
- Found a 3/4" diameter rod monument with a 3-1/4" diameter aluminum cap marked 7322-S.
- National Forest Boundary -- marked and posted to USFS Region One standards.
- Section Line
- Section subdivisional line

FOREST SUPERVISOR'S CERTIFICATE

This survey was made at my request for National Forest management purposes.

*Bob Schrenk*  
Bob Schrenk, Acting Forest Supervisor

PURPOSE OF SURVEY

The purpose of this survey is to locate upon the ground the title lines of record between private lands and National Forest System Lands. No division of land is hereby created.

METHOD OF SURVEY

A Leitz Set 2 Total Station with a Leitz SDR2 Electronic Field Book using conventional closed traverse procedures to tie original controlling corners. Offsets to true line were computed for marking and posting the property lines.

BASIS OF BEARING

Solar Observation

HISTORY OF SURVEYS AND RECORDS

1903 Fractional Subdivision by Geo. A. Fessenden and Ranney Y. Lyman  
1911 Fractional Subdivision by W.C. Perkins  
1976 BLM Remonumentation by Joseph E. French  
No Private Surveys of Record

SURVEYOR'S NOTES

Corner Recordation forms for each corner shown hereon are filed with the Clerk and Recorder's Office, Lincoln County Courthouse, Libby, Montana.

This survey conforms to the USFS Region One Cadastral Survey Contract Specification.

LEGAL DESCRIPTION

Private Lands: S1/2 N1/2 NW1/4 SW1/4; N1/2 N1/2 S1/2 NW1/4 SW1/4; S1/2 NW1/4 NE1/4 SW1/4; N1/2 N1/2 SW1/4 NE1/4 SW1/4

NFSL: NE1/4; SE1/4; NW1/4; SW1/4 SW1/4; N1/2 NW1/4 NE1/4 SW1/4; NE1/4 NE1/4 SW1/4; SE1/4 NE1/4 SW1/4; S1/2 N1/2 SW1/4 NE1/4 SW1/4; S1/2 SW1/4 NE1/4 SW1/4; N1/2 N1/2 NW1/4 SW1/4; S1/2 N1/2 S1/2 NW1/4 SW1/4; S1/2 S1/2 NW1/4 SW1/4

CERTIFICATE OF SURVEYOR

I hereby certify that I am a Registered Land Surveyor in the State of Montana, that the survey shown on this Certificate has been prepared in accordance with the Montana Code Annotated (Sections 76-3-101 through 76-3-614) and the Lincoln County regulations adopted pursuant thereto.

*Alvah F. Hughes* 7322-S 1-26-90  
Alvah F. Hughes, Montana Registration No. 7322-S

CERTIFICATE OF EXAMINING LAND SURVEYOR

Approved this 30th day of January 1990, A.D.  
*Bill Buehler*  
Examining Land Surveyor Registration No. \_\_\_\_\_

Approved *Jim R. Mow*  
Chairman, Lincoln County Commissioners

CERTIFICATE OF CLERK AND RECORDER

State of Montana, County of Lincoln, filed this 30th day of January 1990 A.D. at 10:10 o'clock A. M.  
*Janet B. H. Siegel* by *Joanna Klemm*  
County Clerk Recorder Deputy

CERTIFICATE OF SURVEY NO. 1743

