

# CERTIFICATE OF SURVEY

## DEPENDENT RESURVEY AND SECTION SUBDIVISION

### OF SECTION 31, T.31N., R.31W., P.M.M.

### KOOTENAI NATIONAL FOREST

### LINCOLN COUNTY, MONTANA

## OCTOBER 1987

#### Forest Supervisor's Certificate

This survey was made at my request for National Forest management purposes.

*James F. Rathbun*  
James F. Rathbun, Forest Supervisor

#### Purpose of Survey

The purpose of this survey is to locate upon the ground the title lines of record between National Forest System Lands and private lands, and no division of land is hereby created.

#### History

1893 Original survey of the fractional west boundary and south boundary. T31N, R31W, P.M.M.

1893 Original subdivision survey, T31N, R31W, P.M.M.

1962, 1963, 1974 B.L.M. remonumentation.

1978 B.L.M. dependent resurvey. Monumentation of E1/16 between sections 31 and 6.

1982 Corner recordation by T. Hill, 5612S. Monumentation of the north 1/16 corner between sections 31 and 32.

#### Surveyor's Notes

During the survey of subdivision lines in section 31, several iron pipes were found. No record exists for the found pipes. See filed corner recordations for additional information.

#### Legal Description

National Forest System Lands defined hereon:

Government Lot 1, NE1/4 NE1/4 and SW1/4 SE1/4, section 31, T31N, R31W, P.M.M.

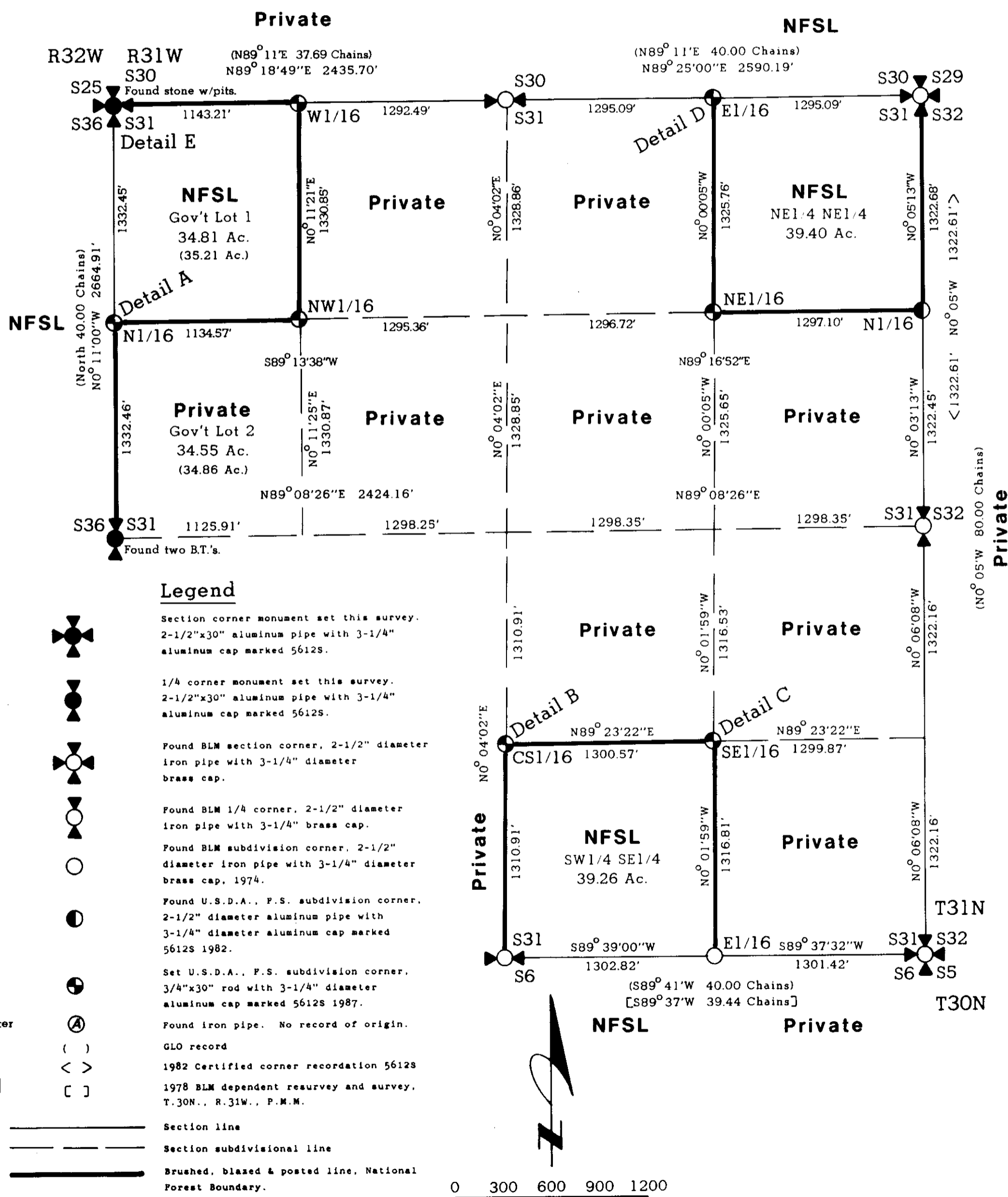
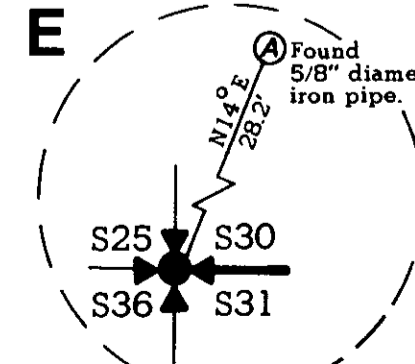
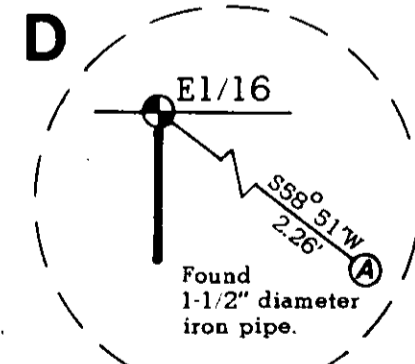
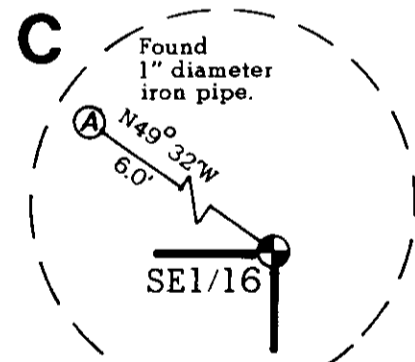
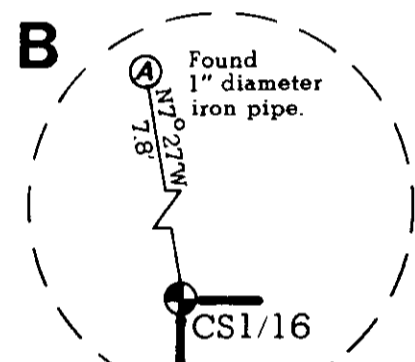
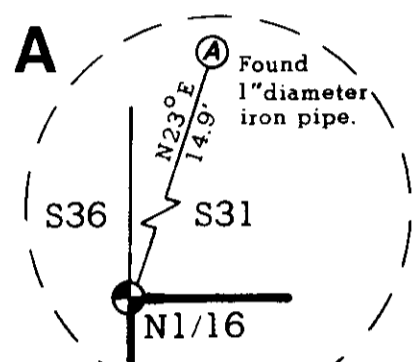
#### Survey Method

Corner positions as shown on this survey are based upon closed traverses performed with a total station instrument, August 1987.

#### Basis of Bearings

Solar observation taken near northwest 1/16 corner, section 31, T31N, R31W.

#### Details (Not to Scale)



#### Legend

Section corner monument set this survey.  
2-1/2"x30" aluminum pipe with 3-1/4" aluminum cap marked 5612S.

1/4 corner monument set this survey.  
2-1/2"x30" aluminum pipe with 3-1/4" aluminum cap marked 5612S.

Found BLM section corner, 2-1/2" diameter iron pipe with 3-1/4" diameter brass cap.

Found BLM 1/4 corner, 2-1/2" diameter iron pipe with 3-1/4" brass cap.

Found BLM subdivision corner, 2-1/2" diameter iron pipe with 3-1/4" diameter brass cap, 1974.

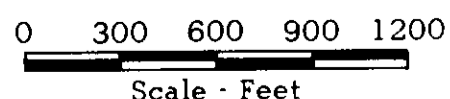
Found U.S.D.A., F.S. subdivision corner, 2-1/2" diameter aluminum pipe with 3-1/4" diameter aluminum cap marked 5612S 1982.

Set U.S.D.A., F.S. subdivision corner, 3/4"x30" rod with 3-1/4" diameter aluminum cap marked 5612S 1987.

Found iron pipe. No record of origin. GLO record

1982 Certified corner recordation 5612S  
1978 BLM dependent resurvey and survey, T.30N., R.31W., P.M.M.

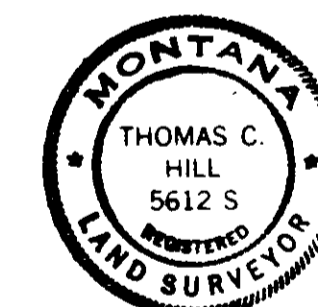
Section line  
Section subdivisional line  
Brushed, blazed & posted line, National Forest Boundary.



#### Certificate

I hereby certify that I am a registered land surveyor in the State of Montana, that the survey shown on this Certificate has been prepared in accordance with the Montana code annotated (Sections 76-3-101 through 76-3-614) and the Lincoln County regulations adopted pursuant thereto.

*Thomas C. Hill*  
Thomas C. Hill  
Montana Registration No. 5612S



#### Certificate of Examining Land Surveyor

Approved this 22nd day of Dec. 1987, A.D.

*Dale Buckhoff*  
Examining Land Surveyor Registration No. \_\_\_\_\_

Approved \_\_\_\_\_  
Chairman, Lincoln County Commissioners

#### Certificate of Clerk and Recorder

State of Montana, County of Lincoln, filed this 23rd day of Dec. 1987 A.D. at 10:25 o'clock A. M.

*Janet B. F. Siegel* by *Sherry L. Hawks*  
County Clerk Recorder Deputy

Certificate of Survey No. 1622