

F & H Land Surveying Co.
 431 E. Second Street
 P.O. Box 114
 Whitefish, Mt. 59937
 862-2386

November 17, 1987

CERTIFICATE OF SURVEY

Dependent Resurvey and Subdivision of Sections 8, 9, and 10, T. 35 N., R. 27 W., P.M., M., Lincoln Co., Mt.

Kootenai National Forest

Scale: 1" = 500'

SLICK GULCH
 CONTRACT NO. 43-03JI-7-1049

LEGEND

- Section corner - found 2 1/2" iron post with a 3/4" B.L.M. brass cap (B.L.M. notes indicate corners were set from original evidence)
- 1/4 corner - found 2 1/2" iron post with a 3/4" B.L.M. brass cap (B.L.M. notes indicate corners were set from original evidence)
- Set a 3/4" x 30" driveable aluminum rod with a 3/4" aluminum cap
- Brushed, blazed, and posted line
- Section line
- Section subdivisional line
- Found 5/8" rebar with a 1 1/4" yellow plastic cap marked J.H.N. 4661 S - set for S1/16 corner per C.of S. 775

PURPOSE OF SURVEY

The purpose of this survey is to locate upon the ground the record title lines between private and National Forest System lands. Therefore, no division of land is hereby created.

LEGAL DESCRIPTION

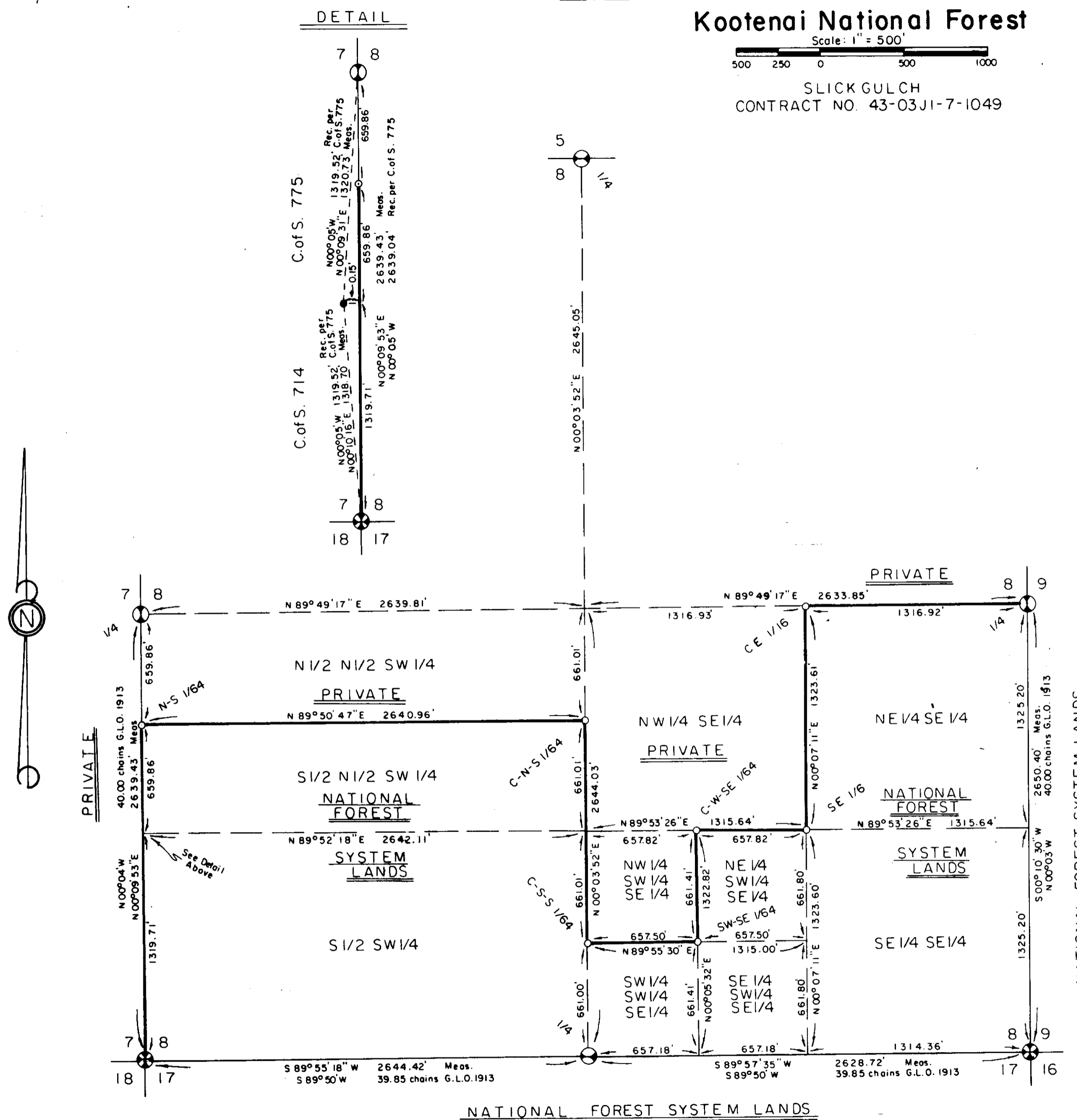
National Forest System Lands described herein:

The S 1/2 N 1/2 SW 1/4, S 1/2 SW 1/4, SW 1/4 SW 1/4 SE 1/4, NE 1/4 SW 1/4 SE 1/4, SE 1/4 SW 1/4 SE 1/4, NE 1/4 SE 1/4, SE 1/4 SE 1/4, of Section 8, T. 35 N., R. 27 W., P.M., M., Lincoln County, Montana.

Private Lands described herein:

The N 1/2 N 1/2 SW 1/4, NW 1/4 SE 1/4, NW 1/4 SW 1/4 SE 1/4, of Section 8, T. 35 N., R. 27 W., P.M., M., Lincoln County, Montana.

NOTE: See sheet No. 3 for History of Survey, Basis of Bearings, Method of Survey, Surveyors Notes, Certificate of Surveyor, Approvals, and Recording Information.



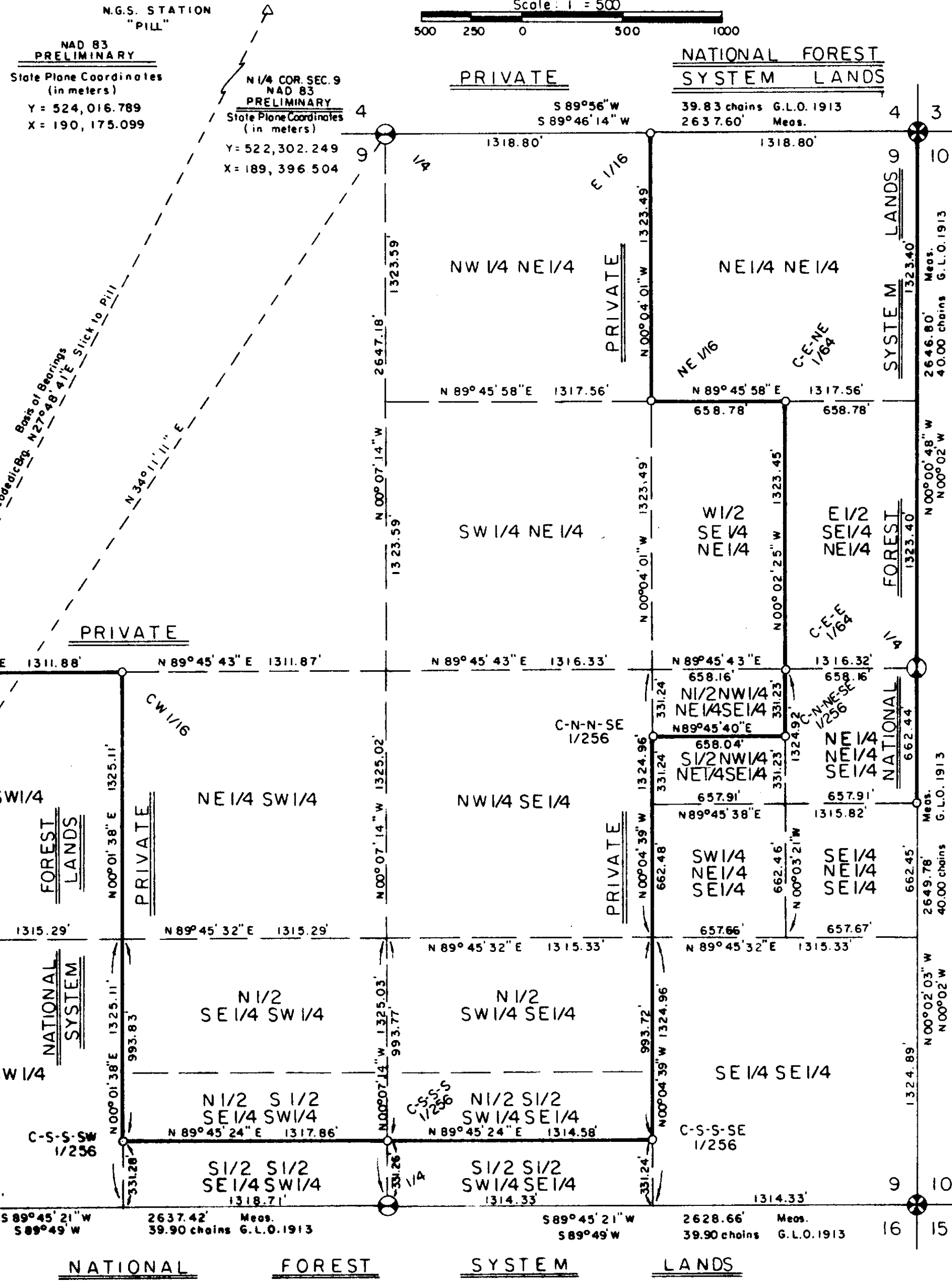
F & H Land Surveying Co.
 431 E. Second Street
 P.O. Box 114
 Whitefish, Mt. 59937
 862-2386

November 17, 1987

CERTIFICATE OF SURVEY

Dependent Resurvey and Subdivision of
 Sections 8, 9, and 10, T. 35 N., R. 27 W., P.M., M., Lincoln Co., Mt.
 Kootenai National Forest

SLICK GULCH
 CONTRACT NO. 43-03J1-7-1049



- ### LEGEND
- ⊗ Section corner - found 2 1/2" iron post with 3 1/4" B.L.M. brass cap (B.L.M. notes indicate corners were set from original evidence)
 - ⊙ 1/4 corner - found 2 1/2" iron post with 3 1/4" B.L.M. brass cap (B.L.M. notes indicate corners were set from original evidence)
 - Set a 3/4" x 30" driveable aluminum rod with a 3 1/4" aluminum cap
 - △ N.G.S. Station
 - Brushed, blazed, and posted line
 - Section line
 - Section subdivisional line

PURPOSE OF SURVEY
 The purpose of this survey is to locate upon the ground the record title lines between private and National Forest System lands. Therefore, no division of land is hereby created.

LEGAL DESCRIPTION
National Forest System Lands described herein:
 The NW 1/4 SW 1/4, SW 1/4 SW 1/4, S 1/2 S 1/2 SE 1/4 SW 1/4, S 1/2 S 1/2 SW 1/4 SE 1/4, SE 1/4 SE 1/4, SW 1/4 NE 1/4 SE 1/4, SE 1/4 NE 1/4 SE 1/4, S 1/2 NW 1/4 NE 1/4 SE 1/4, NE 1/4 NE 1/4 SE 1/4, E 1/2 SE 1/4 NE 1/4, NE 1/4 NE 1/4, of Section 9, T. 35 N., R. 27 W., P.M., M., Lincoln County, Montana.

Private Lands described herein:
 The NE 1/4 SW 1/4, W 1/2 SE 1/4 SW 1/4, W 1/2 S 1/2 SE 1/4 SW 1/4, W 1/2 S 1/2 SW 1/4 SE 1/4, N 1/2 SW 1/4 SE 1/4, NW 1/4 SE 1/4, W 1/2 NW 1/4 NE 1/4 SE 1/4, SW 1/4 NE 1/4, NW 1/4 NE 1/4, of Section 9, T. 35 N., R. 27 W., P.M., M., Lincoln County, Montana.

NOTE: See sheet No. 3 for History of Survey, Basis of Bearings, Method of Survey, Surveyors Notes, Certificate of Surveyor, Approvals, and Recording Information.

N.G.S. Station
 "SLICK"
 NAD 83
 PRELIMINARY
 State Plane Coordinates
 (in meters)
 Y = 520,567.108
 X = 188,026.742

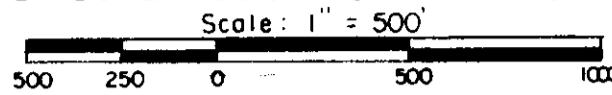
F B H Land Surveying Co.
431 E. Second Street
P.O. Box 114
Whitefish, Mt. 59937
862-2386

November 17, 1987

CERTIFICATE OF SURVEY

Dependent Resurvey and Subdivision of Sections 8, 9, and 10, T. 35 N., R. 27 W., P.M., M., Lincoln Co., Mt. Kootenai National Forest

SLICK GULCH
CONTRACT NO. 43-03J1-7-1049



LEGEND

- ⊗ Section corner - found 2 1/2" iron post with a 3/4" B.L.M. brass cap (B.L.M. notes indicate corners were set from original evidence)
- ⊗ Section corner - set a 2 1/2" dia. x 30" long aluminum post with a 3/4" dia. aluminum cap (set from original evidence)
- ⊙ 1/4 corner - found 2 1/2" iron post with a 3/4" B.L.M. brass cap (B.L.M. notes indicate corners were set from original evidence)
- ⊙ 1/4 corner - set a 2 1/2" dia. x 30" long aluminum post with a 3/4" dia. aluminum cap (set from original evidence)
- Set a 3/4" dia. x 30" long driveable aluminum rod with a 3/4" aluminum cap
- Brushed, blazed and posted line
- Section line
- Section subdivisional line

PURPOSE OF SURVEY

The purpose of this survey is to locate upon the ground the record title lines between private and National Forest System Lands. Therefore, no division of land is hereby created.

LEGAL DESCRIPTION

National Forest System Lands described hereon:
The S 1/2 NW 1/4 SW 1/4, SW 1/4 SW 1/4, NE 1/4 SW 1/4, SE 1/4 SW 1/4, SW 1/4 SE 1/4, E 1/2 NE 1/4, NE 1/4 SE 1/4, SE 1/4 SE 1/4 of Section 10, T.35 N., R.27 W., P.M., M., Lincoln County, Montana.

Private Lands described hereon:

The NW 1/4 NW 1/4, NE 1/4 NW 1/4, SW 1/4 NW 1/4, N 1/2 NW 1/4 SW 1/4, W 1/2 NE 1/4, NW 1/4 SE 1/4, of Section 10, T.35 N., R.27 W., P.M., M., Lincoln County, Montana.

HISTORY OF SURVEY

The original survey was completed on June 14, 1913, by Lewellyn D. Lyman and Royston C. Durnford.

B.L.M. Remonumentation of certain corners in Sections 8, 9, and 10, 1970.

A private survey along the westerly boundary of Section 8, done by Jack H. Nimmeman in May of 1980, and recorded on Certificate of Survey No. 775, records of Lincoln County, Mt.

BASIS OF BEARINGS

The basis of bearings is the true meridian, rotated -04° 06' 07" about NGS station SLICK (established 1987), and derived from preliminary state plane coordinate values for NGS stations SLICK and PILL determined using NAD 1983 datum.

METHOD OF SURVEY

The equipment used for this survey was a Wild T-1 theodolite and a Beetle 1000 EDM. Calculations were made with an HP-41CV. Conventional closed loop traverses occupying all controlling corners were used to determine positions for controlling corners, setting interior section subdivisional corners, and posting the boundary lines.

SURVEYORS NOTES

The state plane coordinate values - Montana Coordinate System - of NGS station SLICK are y=520,567.108 x=188,026.742 --- NGS station PILL are y=524,016.789 x=190,175.099 --- North 1/4 Corner of Section 9, T.35 N., R.27 W., are y=522,302.249 x=189396.504. These values are recorded in meters and are NAD 83 preliminary values.

Corner Recordation forms for each corner shown hereon are on file with the Clerk and Recorder, Lincoln County Courthouse, Libby, Montana.

This survey conforms to Region 1 survey contract specifications.

CERTIFICATE OF SURVEYOR

I hereby certify that I am a Registered Land Surveyor in the State of Montana, that the survey shown on this Certificate has been prepared in accordance with the Montana code annotated (Sections 76-3-101 through 76-3-614) and the Lincoln County regulations adopted pursuant thereto.

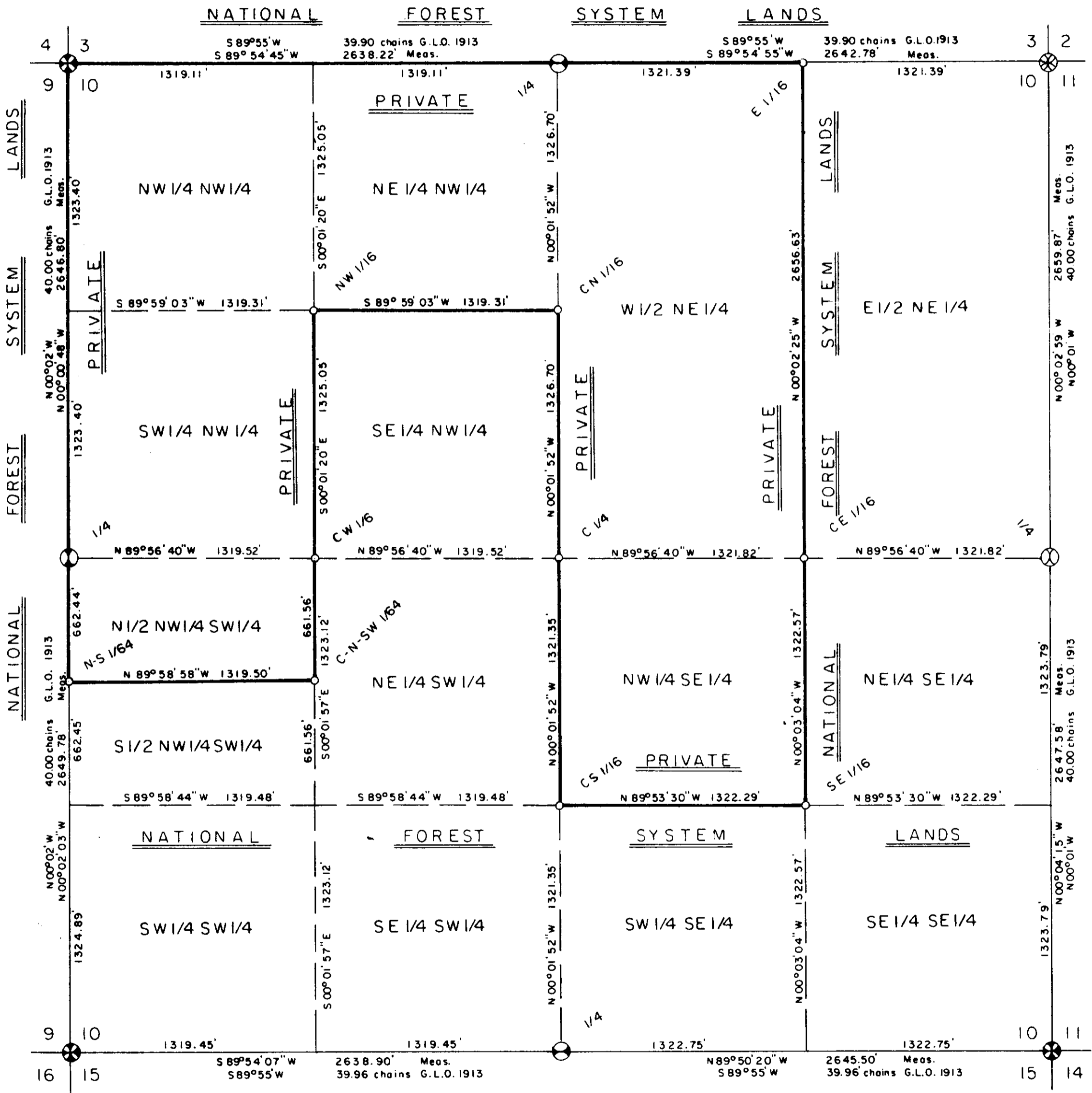
Philip A. Helps
Philip A. Helps
Montana Registration No. 4739 S

CERTIFICATE OF CLERK AND RECORDER

State of Montana)
) SS
County of Lincoln)
Filed on this 16th day of December, 1987, A.D. at 1:20 o'clock P.M.

David B. Lewis
Lincoln County Clerk and Recorder
By: *Deanna Derris*
Deputy

Sheet 3 of 3 Sheets
CERTIFICATE OF SURVEY NO. 1618



This survey was made at my request for National Forest management purposes.
James F. Rathbun
James F. Rathbun, Forest Supervisor

APPROVED: *David S. Siskoff*
APPROVED: *Acting Jim R. May*
Chairman, Lincoln County Commissioners